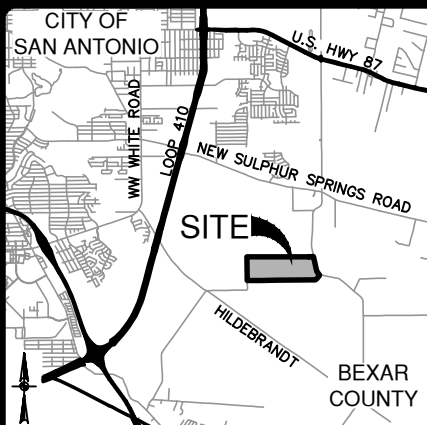


EXHIBIT “B”
SURVEY/FIELD NOTES ANNEXATION AREA



LOCATION MAP

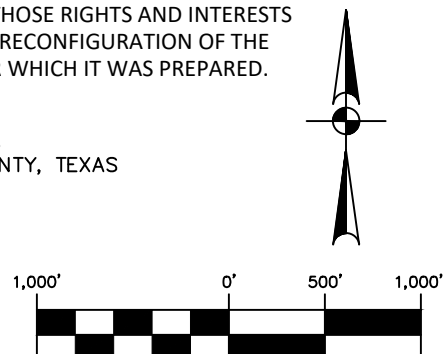
THIS DOCUMENT WAS PREPARED UNDER 22TAC138.95, DOES NOT REFLECT THE RESULTS OF AN ON THE GROUND SURVEY, AND IS NOT TO BE USED TO CONVEY OR ESTABLISH INTERESTS IN REAL PROPERTY EXCEPT THOSE RIGHTS AND INTERESTS IMPLIED OR ESTABLISHED BY THE CREATION OR RECONFIGURATION OF THE BOUNDARY OF THE POLITICAL SUBDIVISION FOR WHICH IT WAS PREPARED.

LEGEND:

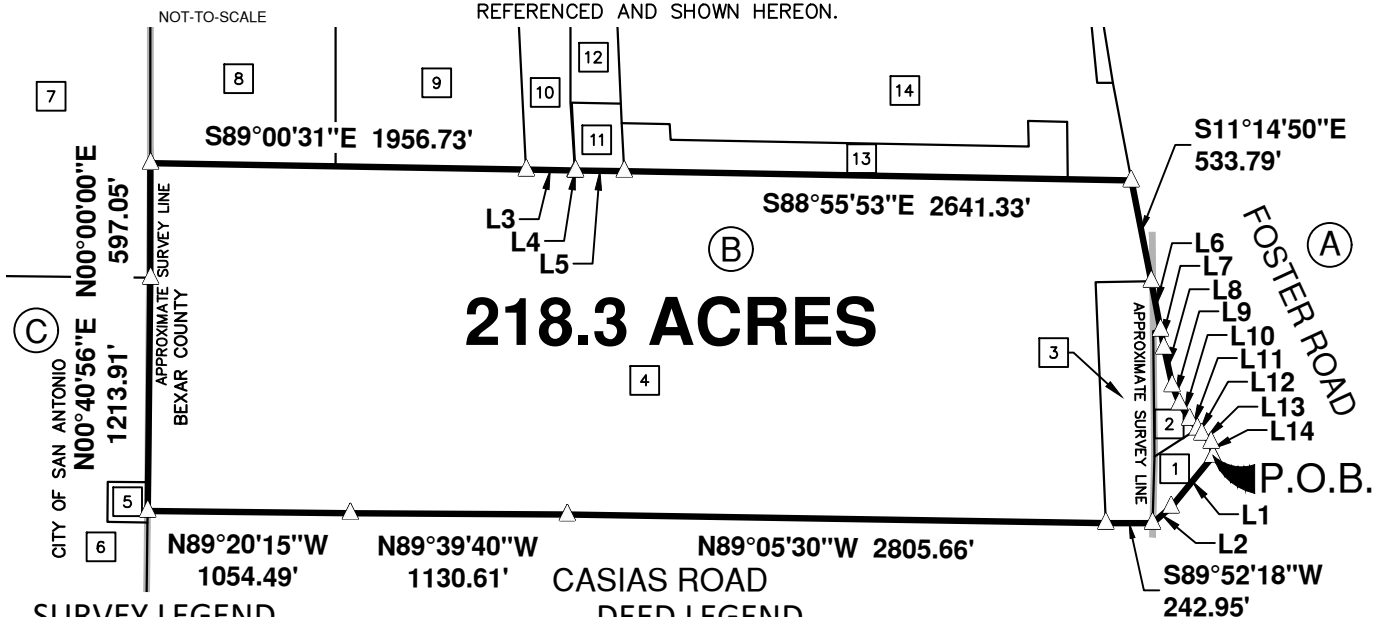
D.R. DEED RECORDS OF BEXAR COUNTY, TEXAS
O.P.R. OFFICIAL PUBLIC RECORDS OF BEXAR COUNTY, TEXAS
△ CALCULATED POINT

NOTES:

1. THIS EXHIBIT IS ISSUED IN CONJUNCTION WITH A METES AND BOUNDS DESCRIPTION PREPARED UNDER JOB NO. 12768-02 BY PAPE-DAWSON ENGINEERS.
2. THE BEARINGS ARE BASED ON RECORD INFORMATION FROM THE DEEDS REFERENCED AND SHOWN HEREON.



SCALE: 1" = 1,000'



SURVEY LEGEND

DEED LEGEND

(A)
MIGUEL GORTARI
SURVEY NO. 5
ABSTRACT 252
COUNTY BLOCK 5152

(B)
MIGUEL MANCHACA
SURVEY NO. 52
ABSTRACT 502
COUNTY BLOCK 5151

(C)
ANTONIO MANCHACA
SURVEY NO. 51
ABSTRACT 905

1 CALLED 1.85 ACRES
R CITY DEVELOPMENTS INC
(DOC. NO. 20190088158 O.P.R.)

2 CALLED 1.605 ACRES
R CITY DEVELOPMENTS INC
(DOC. NO. 20190088165 O.P.R.)

3 CALLED 8.04 ACRES
R CITY DEVELOPMENTS INC
(DOC. NO. 20190088159 O.P.R.)

4 CALLED 206.3513 ACRES
R CITY DEVELOPMENTS INC
(DOC. NO. 20190088155 O.P.R.)

5 CALLED ONE ACRE
UNITED GAS PIPE LINE COMPANY
(VOL. 3327, PG. 321 D.R.)

6 CALLED 76.64 ACRES
R CITY DEVELOPMENTS INC
(DOC. NO. 20190088163 O.P.R.)

7 CALLED 863.962 ACRES
R CITY DEVELOPMENTS INC
(DOC. NO. 20190088154 O.P.R.)

8 CALLED 19.11 ACRES
"TRACT 2"
GILBERT J. HENZE AND
JERELINE P. HENZE
(VOL. 6881, PG. 229 O.P.R.)

9 CALLED 19.11 ACRES
"TRACT 1"
GILBERT J. HENZE AND
JERELINE P. HENZE
(VOL. 6881, PG. 229 O.P.R.)

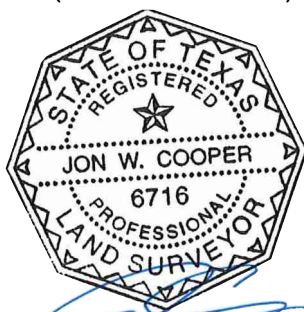
10 CALLED 5.000 ACRES
WILLIAM G. WATSON
(DOC. NO. 20230053047 O.P.R.)
FURTHER DESCRIBED IN
(VOL. 5497, PG. 1074 O.P.R.)

11 CALLED 2.155 ACRES
ROBERT M. GRAVELL AND
MARY ANNA GRAVELL
(VOL. 6751, PG. 606 O.P.R.)

12 CALLED 2.92 ACRES
ROBERT M. GRAVELL AND
MARY A. GRAVELL
(VOL. 2636, PG. 725 O.P.R.)

13 CALLED 10.00 ACRES
JOSE J. RODRIGUEZ
(VOL. 11033, PG. 401 O.P.R.)

14 CALLED 39.250 ACRES
R CITY DEVELOPMENTS INC
(DOC. NO. 20190088161 O.P.R.)



ZONING EXHIBIT



2000 NW LOOP 410 | SAN ANTONIO, TX 78213 | 210.375.9000
TEXAS ENGINEERING FIRM #470 | TEXAS SURVEYING FIRM #10028800

MARCH 6, 2024
REVISED JUNE 25, 2024

LINE TABLE		
LINE	BEARING	LENGTH
L1	S39°23'02"W	344.69'
L2	S49°13'11"W	128.94'
L3	S88°53'50"E	253.87'
L4	S88°53'17"E	2.93'
L5	S89°27'32"E	254.20'
L6	S10°48'05"E	258.23'
L7	S10°33'28"E	94.78'
L8	S12°30'16"E	201.33'
L9	S22°01'16"E	100.18'
L10	S33°10'03"E	97.80'
L11	S39°14'05"E	64.65'
L12	S41°14'58"E	35.07'
L13	S47°21'58"E	64.02'
L14	S08°59'58"E	72.02'

SHEET 1 OF 1
JOB No.:12768-02

METES AND BOUNDS DESCRIPTION
FOR ZONING

A 218.3 acre tract of land being all of a called 206.3513 acre tract of land, recorded in Document No. 20190088155 of said Official Public Records, all of a called 8.04 acre tract of land, recorded in Document No. 20190088159 of said Official Public Records, all of a called 1.605 acre tract of land, recorded in Document No. 20190088165 of said Official Public Records, and all of a called 1.85 acre tract of land, recorded in Document No. 20190088158 of said Official Public Records, all described in deeds to R City Developments Inc., being out of the Miguel Manchaca Survey No. 52, Abstract 502, County Block 5151, and the Miguel Gortari Survey No. 5, Abstract 252, County Block 5152 in Bexar County, Texas. Said 218.3 acre tract being more fully described as follows, with bearings based on record deed information:

BEGINNING: At a point at the southwest intersection of Foster Road and Casias Road and at the southeast corner of said 1.85 acre tract;

THENCE: With the north right-of-way line of said Casias Road and with the south line of said 1.85 acre tract, the following bearings and distances:

S 39°23'02" W, a distance of 344.69 feet to a point;

S 49°13'11" W, a distance of 128.94 feet to a point at the southwest corner of said 1.85 acre tract and at the southeast corner of said 8.04 acre tract;

THENCE: S 89°52'18" W, continuing with the north right-of-way line of said Casias Road and with the south line of said 8.04 acre tract, a distance of 242.95 feet to a point at the southwest corner of said 8.04 acre tract and at the southeast corner of said 206.3513 acre tract;

THENCE: Continuing with the north right-of-way line of said Casias Road and with the south line of said 206.3513 acre tract, the following bearings and distances:

N 89°05'30" W, a distance of 2805.66 feet to a point;

N 89°39'40" W, a distance of 1130.61 feet to a point;

N 89°20'15" W, a distance of 1054.49 feet to a point at the southwest corner of said 206.3513 acre tract, at a northwest corner of said Casias Road, and on the east line of a called one acre tract of land, recorded in Volume 3327, Page 321 of the Deed Records of Bexar County, Texas;

- THENCE: N 00°40'56" E, with the west line of said 206.3513 acre tract, with the east line of said one acre tract, and with the east line of a called 76.64 acre tract of land, recorded in Document No. 20190088163 of said Official Public Records, a distance of 1213.91 feet to a point at the northeast corner of said 76.64 acre tract and at the southeast corner of a called 863.962 acre tract of land, recorded in Document No. 20190088154 of said Official Public Records;
- THENCE: N 00°00'00" E, continuing with the west line of said 206.3513 acre tract and with the east line of said 863.962 acre tract, a distance of 597.05 feet to a point at the northwest corner of said 206.3513 acre tract and at the southwest corner of a called 19.11 acre tract of land, known as Tract 2, recorded in Volume 6881, Page 229, of said Official Public Records;
- THENCE: S 89°00'31" E, departing the east line of said 863.962 acre tract, with the north line of said 206.3513 acre tract, with the south line of said Tract 2, and with the south line of a called 19.11 acre tract of land, known as Tract 1, recorded in said Volume 6881, Page 229, of said Official Public Records, a distance of 1956.73 feet to a point at the southeast corner of said Tract 1 and at the southwest corner of a called 5.000 acre tract of land, recorded in Document No. 20230053047 of said Official Public Records, further described in Volume 5497, Page 1074, of said Official Public Records;
- THENCE: S 88°53'50" E, continuing with the north line of said 206.3513 acre tract and with the south line of said 5.000 acre tract, a distance of 253.87 feet to a point at the southeast corner of said 5.000 acre tract and at the southwest corner of called 2.92 acre tract of land, recorded in Volume 2636, Page 725, of said Official Public Records;
- THENCE: S 88°53'17" E, continuing with the north line of said 206.3513 acre tract and with the south line of said 2.92 acre tract, a distance of 2.93 feet to a point at the southernmost southeast corner of said 2.93 acre tract and at the southwest corner of a called 2.155 acre tract of land, recorded in Volume 6751, Page 606, of said Official Public Records;
- THENCE: S 89°27'32" E, continuing with the north line of said 206.3513 acre tract and with the south line of said 2.155 acre tract, a distance of 254.20 feet to a point at the southeast corner of said 2.155 acre tract and at the southwest corner of a called 10.00 acre tract of land, recorded in Volume 11033, Page 401, of said Official Public Records;
- THENCE: S 88°55'53" E, continuing with the north line of said 206.3513 acre tract, with the south line of said 10.00 acre tract, and with a south line of a called 39.250 acre tract of land, recorded in Document No. 20190088161 of said Official Public Records, a distance of 2641.33 feet to a point at the northeast corner of said 206.3513 acre tract, at the southeast corner of said 39.250 acre tract, and on the west right-of-way line of said Foster Road;

THENCE: S 11°14'50" E, continuing with the west right-of-way line of said Foster Road and with the east line of said 206.3513 acre tract, a distance of 533.79 feet to a point at a southeast corner of said 206.3513 acre tract and at the northeast corner of said 8.04 acre tract;

THENCE: S 10°48'05" E, continuing with the west right-of-way line of said Foster Road and with the east line of said 8.04 acre tract, a distance of 258.23 feet to a point at a southeast corner of said 8.04 acre tract and at the northeast corner of said 1.605 acre tract;

THENCE: Continuing with the west right-of-way line of said Foster Road and with the east line of said 1.605 acre tract, the following bearings and distances:

S 10°33'28" E, a distance of 94.78 feet to a point;

S 12°30'16" E, a distance of 201.33 feet to a point;

S 22°01'16" E, a distance of 100.18 feet to a point;

S 33°10'03" E, a distance of 97.80 feet to a point;

S 39°14'05" E, a distance of 64.65 feet to a point at the southeast corner of said 1.605 acre tract and at the northeast corner of said 1.85 acre tract;

THENCE: Continuing with the west right-of-way line of said Foster Road and with the east line of said 1.85 acre tract, the following bearings and distances:

S 41°14'58" E, a distance of 35.07 feet to a point;

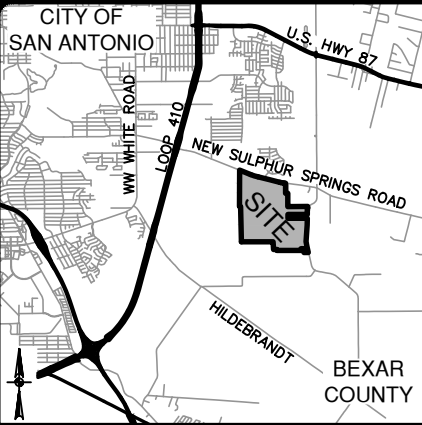
S 47°21'58" E, a distance of 64.02 feet to a point;

S 08°59'58" E, a distance of 72.02 feet to the POINT OF BEGINNING and containing 218.3 acres in Bexar County, Texas. Said tract being described in conjunction with an exhibit prepared under job number 12768-02 by Pape-Dawson Engineers.

This document was prepared under 22TAC138.95, does not reflect the results of an on the ground survey, and is not to be used to convey or establish interests in real property except those rights and interests implied or established by the creation or reconfiguration of the boundary of the political subdivision for which it was prepared.

PREPARED BY:	Pape-Dawson Engineers
DATE:	March 6, 2024
REVISED:	June 25, 2024
JOB NO.	12768-02
DOC. ID.	N:\CIVIL\12768-02\Word\12768-02 FNZN 218.3 AC.docx





LOCATION MAP

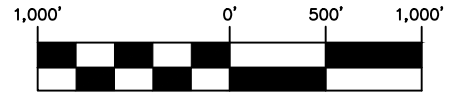
THIS DOCUMENT WAS PREPARED UNDER 22TAC138.95, DOES NOT REFLECT THE RESULTS OF AN ON THE GROUND SURVEY, AND IS NOT TO BE USED TO CONVEY OR ESTABLISH INTERESTS IN REAL PROPERTY EXCEPT THOSE RIGHTS AND INTERESTS IMPLIED OR ESTABLISHED BY THE CREATION OR RECONFIGURATION OF THE BOUNDARY OF THE POLITICAL SUBDIVISION FOR WHICH IT WAS PREPARED.

LEGEND:

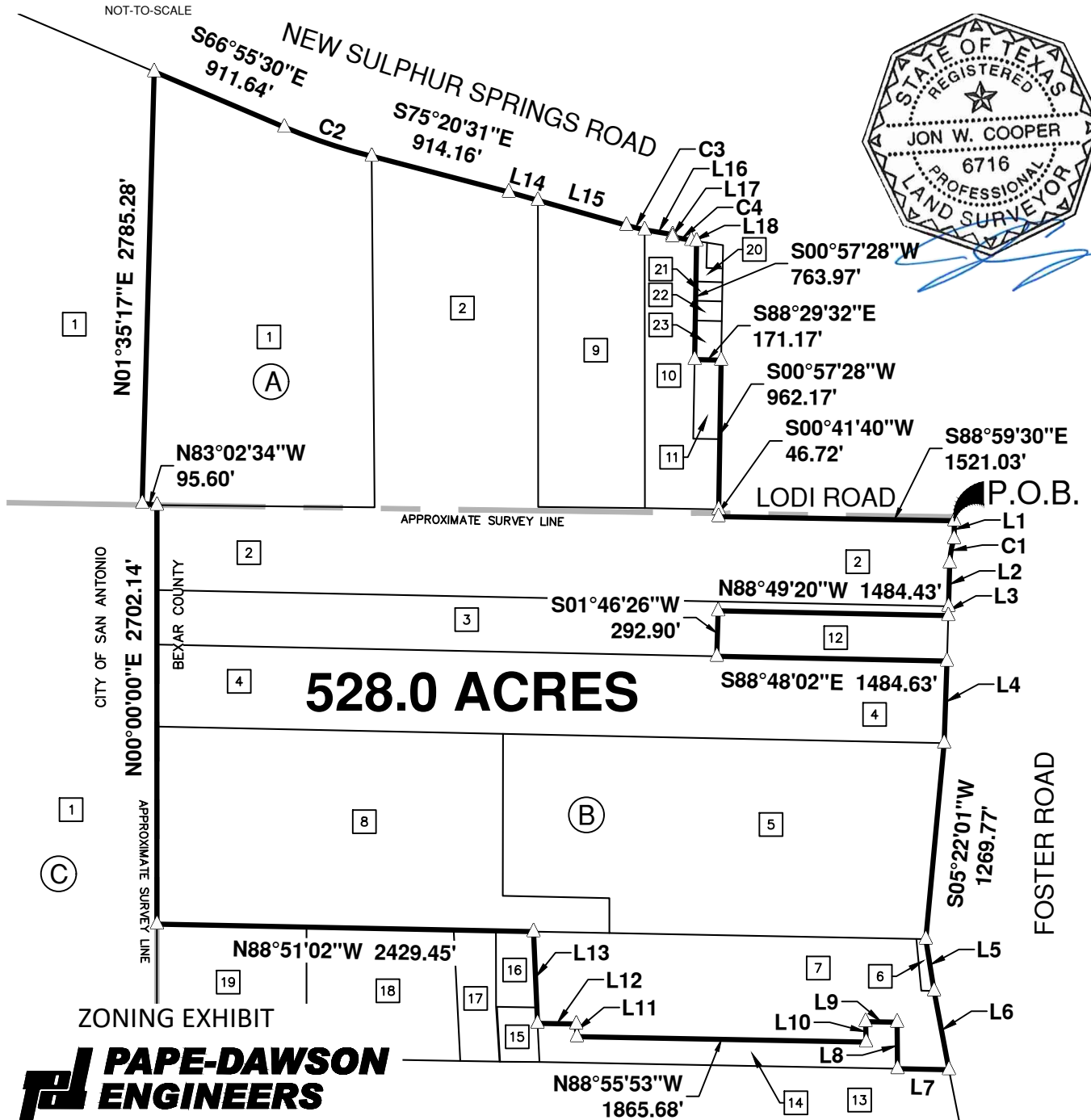
D.R. DEED RECORDS OF BEXAR COUNTY, TEXAS
O.P.R. OFFICIAL PUBLIC RECORDS OF BEXAR COUNTY, TEXAS
△ CALCULATED POINT

NOTES:

1. THIS EXHIBIT IS ISSUED IN CONJUNCTION WITH A METES AND BOUNDS DESCRIPTION PREPARED UNDER JOB NO. 12768-02 BY PAPE-DAWSON ENGINEERS.
2. THE BEARINGS ARE BASED ON RECORD INFORMATION FROM THE DEEDS REFERENCED AND SHOWN HEREON.



SCALE: 1" = 1,000'



ZONING EXHIBIT



2000 NW LOOP 410 | SAN ANTONIO, TX 78213 | 210.375.9000
TEXAS ENGINEERING FIRM #470 | TEXAS SURVEYING FIRM #10028800

MARCH 6, 2024
REVISED JUNE 25, 2024

SHEET 1 OF 2
JOB No.:12768-02

DEED LEGEND

1	CALLED 863.962 ACRES R CITY DEVELOPMENTS INC (DOC. NO. 20190088154 O.P.R.)	13	CALLED 206.3513 ACRES R CITY DEVELOPMENTS INC (DOC. NO. 20190088155 O.P.R.)
2	CALLED 118.321 ACRES R CITY DEVELOPMENTS INC (DOC. NO. 20190088160 O.P.R.)	14	CALLED 10.00 ACRES JOSE J. RODRIGUEZ (VOL. 11033, PG. 401 O.P.R.)
3	CALLED 31.30 ACRES R CITY DEVELOPMENTS INC (DOC. NO. 20190088162 O.P.R.)	15	CALLED 2.155 ACRES ROBERT M. GRAVELL AND MARY ANNA GRAVELL (VOL. 6751, PG. 606 O.P.R.)
4	CALLED 61.72 ACRES R CITY DEVELOPMENTS INC (DOC. NO. 20190088157 O.P.R.)	16	CALLED 2.92 ACRES ROBERT M. GRAVELL AND MARY A. GRAVELL (VOL. 2636, PG. 725 O.P.R.)
5	CALLED 77.63 ACRES R CITY DEVELOPMENTS INC (DOC. NO. 20190088168 O.P.R.)	17	CALLED 5.000 ACRES WILLIAM G. WATSON (DOC. NO. 20230053047 O.P.R.) FURTHER DESCRIBED IN (VOL. 5497, PG. 1074 O.P.R.)
6	CALLED 0.55 ACRES R CITY DEVELOPMENTS INC (DOC. NO. 20190088168 O.P.R.)	18	CALLED 19.11 ACRES "TRACT 1" GILBERT J. HENZE AND JERELINE P. HENZE (VOL. 6881, PG. 229 O.P.R.)
7	CALLED 39.250 ACRES R CITY DEVELOPMENTS INC (DOC. NO. 20190088161 O.P.R.)	19	CALLED 19.11 ACRES "TRACT 2" GILBERT J. HENZE AND JERELINE P. HENZE (VOL. 6881, PG. 229 O.P.R.)
8	CALLED 68.69 ACRES R CITY DEVELOPMENTS INC (DOC. NO. 20190088163 O.P.R.)	20	BETTY LOU MILLER BARR (VOL. 16171, PG. 761 O.P.R.)
9	CALLED 29.766 ACRES R CITY DEVELOPMENTS INC (DOC. NO. 20190088170 O.P.R.)	21	CALLED 0.493 ACRES BETTY LOU MILLER BARR (VOL. 16394, PG. 1801 O.P.R.)
10	REMAINING PORTION OF CALLED 14.89 ACRES R CITY DEVELOPMENTS INC (DOC. NO. 20190088164 O.P.R.)	22	CALLED 0.507 ACRES DONNA TREVINA, ET AL. (DOC. NO. 20200228492 O.P.R.)
11	CALLED 2.00 ACRES R CITY DEVELOPMENTS INC (DOC. NO. 20190088169 O.P.R.)	23	CALLED 1.00 ACRES MARK A. SHAW, SR. AND PHYLLIS L. SHAW (VOL. 15059, PG. 714 O.P.R.)
12	CALLED 10.00 ACRES VIRGINIA D. BERGER (VOL. 12508, PG. 1641 O.P.R.)		

LINE TABLE		
LINE	BEARING	LENGTH
L1	S00°44'00"W	115.28'
L2	S01°33'45"W	279.54'
L3	S01°43'21"W	59.99'
L4	S01°56'08"W	529.21'
L5	S09°10'04"E	338.43'
L6	S10°38'51"E	516.91'

LINE TABLE		
LINE	BEARING	LENGTH
L7	N88°55'53"W	331.57'
L8	N00°28'20"W	300.00'
L9	N88°59'06"W	203.55'
L10	S01°29'27"E	131.87'
L11	N02°53'53"W	81.63'
L12	N88°55'53"W	250.00'

LINE TABLE		
LINE	BEARING	LENGTH
L13	N02°29'47"W	591.88'
L14	S74°01'32"E	195.31'
L15	S74°15'57"E	592.78'
L16	S80°17'32"E	182.79'
L17	S00°34'30"W	13.43'
L18	S81°05'36"E	34.89'

CURVE TABLE					
CURVE	RADIUS	DELTA	CHORD BEARING	CHORD	LENGTH
C1	538.23'	17°03'21"	S10°05'19"W	159.63'	160.22'
C2	3657.78'	9°19'32"	S71°35'16"E	594.69'	595.35'
C3	1953.11'	3°33'19"	S76°02'37"E	121.18'	121.20'
C4	1952.86'	3°36'08"	S79°17'32"E	122.76'	122.78'

ZONING EXHIBIT



2000 NW LOOP 410 | SAN ANTONIO, TX 78213 | 210.375.9000
TEXAS ENGINEERING FIRM #470 | TEXAS SURVEYING FIRM #10028800

MARCH 6, 2024
REVISED JUNE 25, 2024

SHEET 2 OF 2
JOB No.:12768-02

SURVEY LEGEND

Ⓐ
NEPOMUCENO MONTOYA
SURVEY NO. 21
ABSTRACT 469
COUNTY BLOCK 5132

Ⓑ
MIGUEL MANCHACA
SURVEY NO. 52
ABSTRACT 502
COUNTY BLOCK 5151

Ⓒ
ANTONIO MANCHACA
SURVEY NO. 51
ABSTRACT 905

METES AND BOUNDS DESCRIPTION
FOR ZONING

A 528.0 acre tract of land being a portion of a called 863.962 acre tract of land, recorded in Document No. 20190088154 of the Official Public Records of Bexar County, Texas, all of a called 118.321 acre tract of land, recorded in Document No. 20190088160 of said Official Public Records, all of a called 29.766 acre tract of land, recorded in Document No. 20190088170 of said Official Public Records, the remaining portion of a called 14.89 acre tract of land, recorded in Document No. 20190088164 of said Official Public Records, all of a called 2.00 acre tract of land, recorded in Document No. 20190088169 of said Official Public Records, all of a called 31.30 acre tract of land, recorded in Document No. 20190088162 of said Official Public Records, all of a called 61.72 acre tract of land, recorded in Document No. 20190088157 of said Official Public Records, all of a called 77.63 acre tract of land, and a called 0.55 acre tract of land, both recorded in Document No. 20190088168 of said Official Public Records, all of a called 39.250 acre tract of land, recorded in Document No. 20190088161 of said Official Public Records, and all of a called 68.69 acre tract of land, recorded in Document No. 20190088163 of said Official Public Records, all described in deeds to R City Developments Inc., being out of the Nepomuceno Montoya Survey No. 21, Abstract 469, County Block 5132, and the Miguel Manchaca Survey No. 52, Abstract 502, County Block 5151, in Bexar County, Texas. Said 528.0 acre tract being more fully described as follows, with bearings based record deed information:

BEGINNING: At a point at the southwest intersection of Foster Road and Lodi Road and at the easternmost northeast corner of said 118.321 acre tract;

THENCE: With the west right-of-way line of said Foster Road and with the east line of said 118.321 acre tract, the following bearings and distances:

S 00°44'00" W, a distance of 115.28 feet to a point;

Southwesterly, along a non-tangent curve to the left, said curve having a radius of 538.23 feet, a central angle of 17°03'21", a chord bearing and distance of S 10°05'19" W, 159.63 feet, for an arc length of 160.22 feet to a point;

S 01°33'45" W, a distance of 279.54 feet to a point at the southeast corner of said 118.321 acre tract and at the northeast corner of said 31.30 acre tract;

THENCE: S 01°43'21" W, continuing with the west right-of-way line of said Foster Road and with the east line of said 31.30 acre tract, a distance of 59.99 feet to a point at the easternmost southeast corner of said 31.30 acre tract, and at the northeast corner of a called 10.00 acre tract of land, recorded in Volume 12508, Page 1641, of said Official Public Records;

THENCE: N 88°49'20" W, departing the west right-of-way line of said Foster Road, with a south line of said 31.30 acre tract and with the north line of said 10.00 acre tract, a distance of 1484.43 feet to a point at a reentrant corner of said 31.30 acre tract and at the northwest corner of said 10.00 acre tract;

THENCE: S 01°46'26" W, with an east line of said 31.30 acre tract and with the west line of said 10.00 acre tract, a distance of 292.90 feet to a point at the southernmost southeast corner of said 31.30 acre tract, at the southwest corner of said 10.00 acre tract, and on the north line of said 61.72 acre tract;

THENCE: S 88°48'02" E, with the north line of said 61.72 acre tract and with the south line of said 10.00 acre tract, a distance of 1484.63 feet to a point at the northeast corner of said 61.72 acre tract, at the southeast corner of said 10.00 acre tract, and on the west right-of-way line of said Foster Road;

THENCE: S 01°56'08" W, with the west right-of-way line of said Foster Road and with the east line of said 61.72 acre tract, a distance of 529.21 feet to a point at the southeast corner of said 61.72 acre tract and at the northeast corner of said 77.63 acre tract;

THENCE: S 05°22'01" W, continuing with the west right-of-way line of said Foster Road and with the east line of said 77.63 acre tract, a distance of 1269.77 feet to a point at the southeast corner of said 77.63 acre tract and at the northeast corner of said 0.55 acre tract;

THENCE: S 09°10'04" E, continuing with the west right-of-way line of said Foster Road and with the east line of said 0.55 acre tract, a distance of 338.43 feet to a point at the southeast corner of said 0.55 acre tract and at a northeast corner of said 39.250 acre tract;

THENCE: S 10°38'51" E, continuing with the west right-of-way line of said Foster Road and with the east line of said 39.250 acre tract, a distance of 516.91 feet to a point at the southeast corner of said 39.250 acre tract and at the northeast corner of a called 206.3513 acre tract of land, recorded in Document No. 20190088155 of said Official Public Records;

THENCE: N 88°55'53" W, departing the west right-of-way line of said Foster Road, with the south line of said 39.250 acre tract, and with the north line of said 206.3513 acre tract, a distance of 331.57 feet to a point at a southwest corner of said 39.250 acre tract and at the southeast corner of a called 10.00 acre tract of land, recorded in Volume 11033, Page 401, of said Official Public Records;

THENCE: N 00°28'20" W, departing the north line of said 206.3513 acre tract, with a west line of said 39.250 acre tract, and with the east line of said 10.00 acre tract recorded in Volume 11033, Page 401, a distance of 300.00 feet to a point at a reentrant corner of said 39.250 acre tract and at the northeast corner of said 10.00 acre tract recorded in Volume 11033, Page 401;

THENCE: With a south line of said 39.250 acre tract and with the north line of said 10.00 acre tract recorded in Volume 11033, Page 401, the following bearings and distances:

N 88°59'06" W, a distance of 203.55 feet to a point;

S 01°29'27" E, a distance of 131.87 feet to a point;

N 88°55'53" W, a distance of 1865.68 feet to a point;

N 02°53'53" W, a distance of 81.63 feet to a point;

N 88°55'53" W, a distance of 250.00 feet to a point at the westernmost southwest corner of said 39.250 acre tract, at the northwest corner of said 10.00 acre tract recorded in Volume 11033, Page 401, and on the east line of a called 2.155 acre tract of land, recorded in Volume 6751, Page 606, of said Official Public Records;

THENCE: N 02°29'47" W, with the east line of said 2.155 acre tract, with the east line of a called 2.92 acre tract of land, recorded in Volume 2636, Page 725, of said Official Public Records, and with the west line of said 39.250 acre tract, a distance of 591.88 feet to a point at the northwest corner of said 39.250 acre tract, at the northeast corner of said 2.92 acre tract, and on the south line of said 68.69 acre tract;

THENCE: N 88°51'02" W, with the south line of said 68.69 acre tract, with the north line of said 2.92 acre tract, with the north line of a called 5.000 acre tract of land, recorded in Document No. 20230053047 of said Official Public Records, further described in Volume 5497, Page 1074, of said Official Public Records, and with the north lines of a called 19.11 acre tract of land, known as Tract 2, and a called 19.11 acre tract of land, known as Tract 1, both recorded in Volume 6881, Page 229, of said Official Public Records, a distance of 2429.45 feet to a point at the southwest corner of said 68.69 acre tract, at the northwest corner of said Tract 2, and on the east line of said 863.962 acre tract;

THENCE: N 00°00'00" E, with the west line of said 68.69 acre tract, with the west line of said 61.72 acre tract, with the west line of said 31.30 acre tract, with the west line of said 118.321 acre tract, and with the east line of said 863.962 acre tract, a distance of 2702.14 feet to a point at the westernmost northwest corner of said 118.321 acre tract and at a reentrant corner of said 863.962 acre tract;

THENCE: Over and across said 863.962 acre tract, the following bearings and distances:

N 83°02'34" W, a distance of 95.60 feet to a point;

N 01°35'17" E, a distance of 2785.28 feet to a point on the north line of said 863.962 acre tract and on the south right-of-way line of New Sulfur Springs Road;

THENCE: With the south right-of-way line of said New Sulfur Springs Road and with the north line of said 863.962 acre tract, the following bearings and distances:

S 66°55'30" E, a distance of 911.64 feet to a point;

Southeasterly, along a tangent curve to the left, said curve having a radius of 3657.78 feet, a central angle of 09°19'32", a chord bearing and distance of S 71°35'16" E, 594.69 feet, for an arc length of 595.35 feet to a point at the northeast corner of said 863.962 acre tract and at the northernmost northwest corner of said 118.321 acre tract;

THENCE: Continuing with the south right-of-way line of said New Sulfur Springs Road and with the north line of said 118.321 acre tract, the following bearings and distances:

S 75°20'31" E, a distance of 914.16 feet to a point;

S 74°01'32" E, a distance of 195.31 feet to a point at the northernmost northeast corner of said 118.321 acre tract and at the northwest corner of said 29.766 acre tract;

THENCE: Continuing with the south right-of-way line of said New Sulfur Springs Road and with the north line of said 29.766 acre tract, the following bearings and distances:

S 74°15'57" E, a distance of 592.78 feet to a point;

Southeasterly, along a tangent curve to the left, said curve having a radius of 1953.11 feet, a central angle of 03°33'19", a chord bearing and distance of S 76°02'37" E, 121.18 feet, for an arc length of 121.20 feet to a point at the northeast corner of said 29.766 acre tract and at the northwest corner of said 14.89 acre tract;

THENCE: S 80°17'32" E, continuing with the south right-of-way line of said New Sulfur Springs Road and with the north line of said 14.89 acre tract, a distance of 182.79 feet to a point;

THENCE: Continuing with the south right-of-way line of said New Sulfur Springs Road, over and across said 14.89 acre tract, the following bearings and distances:

S 00°34'30" W, a distance of 13.43 feet to a point;

Southeasterly, along a non-tangent curve to the left, said curve having a radius of 1952.86 feet, a central angle of 03°36'08", a chord bearing and distance of S 79°17'32" E, 122.76 feet, for an arc length of 122.78 feet to a point;

S 81°05'36" E, a distance of 34.89 feet to a point at the northwest corner of a tract of land recorded in Volume 16171, Page 761, of said Official Public Records;

THENCE: S 00°57'28" W, departing said New Sulfur Springs Road, continuing over and across said 14.89 acre tract, with the west line of said tract of land recorded in Volume 16171, Page 761, of said Official Public Records, with the west line of a called 0.493 acre tract of land, recorded in Volume 16394, Page 1801, of said Official Public Records, with the west line of a called 0.507 acre tract of land, recorded in Document No. 20200228492, of said Official Public Records, and with the west line of a called 1.00 acre tract of land, recorded in Volume 15059, Page 714, of said Official Public Records, a distance of 763.97 feet to a point at the northwest corner of said 2.00 acre tract and at the southwest corner of said 1.00 acre tract;

THENCE: S 88°29'32" E, with the north line of said 2.00 acre tract and with the south line of said 1.00 acre tract, a distance of 171.17 feet to a point on the west right-of-way line of said Lodi Road, at the northeast corner of said 2.00 acre tract, and at the southeast corner of said 1.00 acre tract;

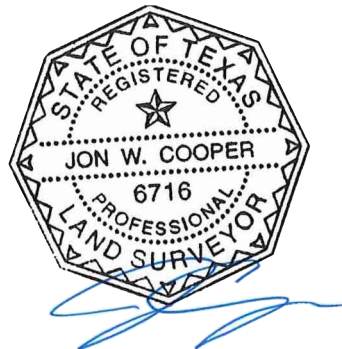
THENCE: S 00°57'28" W, with the west right-of-way line of said Lodi Road and with the east line of said 2.00 acre tract, and with the east line of said 14.89 acre tract, a distance of 962.17 feet to a point at the southeast corner of said 14.89 acre tract and at a northeast corner of said 118.321 acre tract;

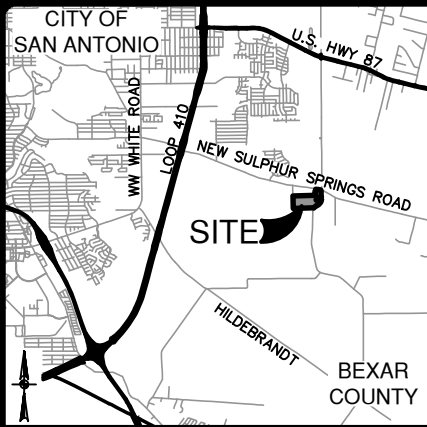
THENCE: S 00°41'40" W, continuing with the west right-of-way line of said Lodi Road and with an east line of said 118.321 acre tract, a distance of 46.72 feet to a point at the southwest corner of said Lodi Road and at a reentrant corner of said 118.321 acre tract;

THENCE: S 88°59'30" E, with the south right-of-way line of said Lodi Road, with a north line of said 118.321 acre tract, a distance of 1521.03 feet the POINT OF BEGINNING and containing 528.0 acres in Bexar County, Texas. Said tract being described in conjunction with an exhibit prepared under job number 12768-02 by Pape-Dawson Engineers.

This document was prepared under 22TAC138.95, does not reflect the results of an on the ground survey, and is not to be used to convey or establish interests in real property except those rights and interests implied or established by the creation or reconfiguration of the boundary of the political subdivision for which it was prepared.

PREPARED BY:	Pape-Dawson Engineers
DATE:	March 6, 2024
REVISED:	June 25, 2024
JOB NO.	12768-02
DOC. ID.	N:\CIVIL\12768-02\Word\12768-02 FNZN 528.0 AC.docx





LOCATION MAP

NOT-TO-SCALE

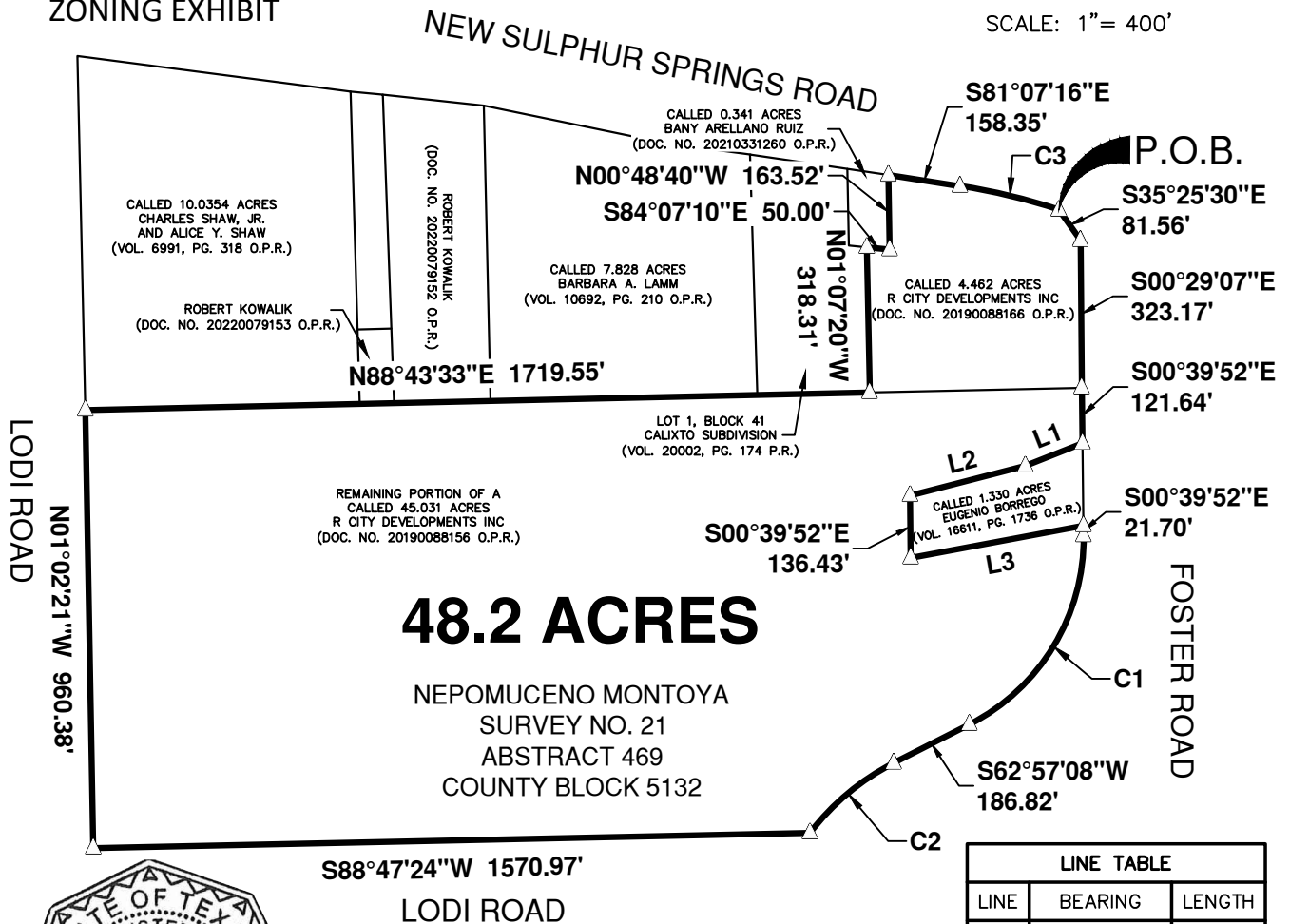
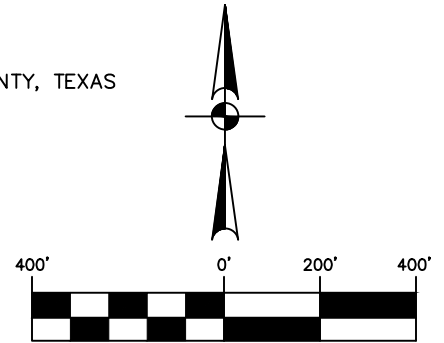
ZONING EXHIBIT

LEGEND:

P.R. PLAT RECORDS OF BEXAR COUNTY, TEXAS
O.P.R. OFFICIAL PUBLIC RECORDS OF BEXAR COUNTY, TEXAS
△ CALCULATED POINT

NOTES:

- THIS EXHIBIT IS ISSUED IN CONJUNCTION WITH A METES AND BOUNDS DESCRIPTION PREPARED UNDER JOB NO. 12768-02 BY PAPE-DAWSON ENGINEERS.
- THE BEARINGS ARE BASED ON RECORD INFORMATION FROM THE DEEDS REFERENCED AND SHOWN HEREON.



2000 NW LOOP 410 | SAN ANTONIO, TX 78213 | 210.375.9000
TEXAS ENGINEERING FIRM #470 | TEXAS SURVEYING FIRM #10028800

CURVE TABLE					
CURVE	RADIUS	DELTA	CHORD BEARING	CHORD	LENGTH
C1	458.23'	63°36'59"	S31°08'38"W	483.05'	508.78'
C2	538.23'	25°39'03"	S50°07'37"W	238.95'	240.96'
C3	1377.45'	9°17'54"	S76°28'20"E	223.29'	223.54'

LINE TABLE		
LINE	BEARING	LENGTH
L1	S68°21'07"W	134.40'
L2	S75°36'43"W	261.16'
L3	N79°29'41"E	384.85'

Date: Jun 24, 2024, 8:27am User ID: jfree
File: N:\GWL\12768-02\12768-02_ZNEX 48.179 AC.dwg

FEBRUARY 15, 2024
REVISED JUNE 25, 2024

SHEET 1 OF 1
JOB No.:12768-02

REFERENCE:

METES AND BOUNDS DESCRIPTION
FOR ZONING

A 48.2 acre tract of land being the remaining portion of a called 45.031 acre tract of land, recorded in Document No. 20190088156 of the Official Public Records of Bexar County, Texas, and all of a called 4.462 acre tract of land, recorded in Document No. 20190088166 of said Official Public Records, both described in deeds to R City Developments Inc., being out of the Nepomuceno Montoya Survey No. 21, Abstract 469, County Block 5132, in Bexar County, Texas. Said 48.2 acre tract being more fully described as follows, with bearings based on record deed information:

BEGINNING: At a point at the north end of the cutback line at the southwest intersection of New Sulfur Springs Road and Foster Road, and at the northernmost northeast corner of said 4.462 acre tract;

THENCE: S 35°25'30" E, with said cutback line and with the northeast line of said 4.462 acre tract, a distance of 81.56 feet to a point at the south end of said cutback line and at the easternmost northeast corner of said 4.462 acre tract;

THENCE: S 00°29'07" E, with the west right-of-way line of said Foster Road and with the east line of said 4.462 acre tract, a distance of 323.17 feet to a point at the southeast corner of said 4.462 acre tract and at the northeast corner of said 45.031 acre tract;

THENCE: S 00°39'52" E, continuing with the west right-of-way line of said Foster Road and with the east line of said 45.031 acre tract, a distance of 121.64 feet to a point at the northeast corner of a called 1.330 acre tract of land, recorded in Volume 16611, Page 1736, of said Official Public Records;

THENCE: Departing the west right-of-way line of said Foster Road, over and across said 45.031 acre tract, and with the north line of said 1.330 acre tract, the following bearings and distances:

S 68°21'07" W, a distance of 134.40 feet to a point;

S 75°36'43" W, a distance of 261.16 feet to a point at the northwest corner of said 1.330 acre tract;

THENCE: S 00°39'52" E, continuing over and across said 45.031 acre tract, with the west line of said 1.330 acre tract, a distance of 136.43 feet to a point at the southwest line of said 1.330 acre tract;

THENCE: N 79°29'41" E, continuing over and across said 45.031 acre tract, with the south line of said 1.330 acre tract, a distance of 384.85 feet to a point at the southeast corner of said 1.330 acre tract, on the east line of said 45.031 acre tract, and on the west right-of-way line of said Foster Road;

THENCE: With the west right-of-way line of said Foster Road and with the east line of said 45.031 acre tract, the following bearings and distances:

S 00°39'52" E, a distance of 21.70 feet to a point;

Southwesterly, along a tangent curve to the right, said curve having a radius of 458.23 feet, a central angle of 63°36'59", a chord bearing and distance of S 31°08'38" W, 483.05 feet, for an arc length of 508.78 feet to a point;

S 62°57'08" W, a distance of 186.82 feet to a point;

Southwesterly, along a tangent curve to the left, said curve having a radius of 538.23 feet, a central angle of 25°39'03", a chord bearing and distance of S 50°07'37" W, 238.95 feet, for an arc length of 240.96 feet to a point at the northwest intersection of said Foster Road and Lodi Road, and at the southeast corner of said 45.031 acre tract;

THENCE: S 88°47'24" W, with the north right-of-way line of said Lodi Road and with the south line of said 45.031 acre tract, a distance of 1570.97 feet to a point at a reentrant corner of said Lodi Road and at the southwest corner of said 45.031 acre tract;

THENCE: N 01°02'21" W, with the east right-of-way line of said Lodi Road and with the west line of said 45.031 acre tract, a distance of 960.38 feet to a point at the northwest corner of said 45.031 acre tract and at the southwest corner of a called 10.0354 acre tract of land, recorded in Volume 6991, Page 318, of said Official Public Records;

THENCE: N 88°43'33" E, with the north line of said 45.031 acre tract, with the south line of said 10.0354 acre tract, with the south line of a tract of land described in deed to Robert Kowalik, recorded in Document No. 20220079153 of said Official Public Records, with the south line of a tract of land described in deed to Robert Kowalik, recorded in Document No. 20220079152 of said Official Public Records, with the south line of a called 7.828 acre tract of land, recorded in Volume 10692, Page 210, of said Official Public Records, and with the south line of Lot 1, Block 41, of Calixto Subdivision, recorded in Volume 20002, Page 174, of the Plat Records of Bexar County, Texas, a distance of 1719.55 feet to a point at the southwest corner of said 4.462 acre tract and at the southeast corner of said Lot 1;

THENCE: N 01°07'20" W, departing the north line of said 45.031 acre tract, with the west line of said 4.462 acre tract, and with the east line of said Lot 1, a distance of 318.31 feet to a point at the westernmost northwest corner of said 4.462 acre tract, at the easternmost northeast corner of said Lot 1, and on the south line of a called 0.341 acre tract of land, recorded in Document No. 20210331260 of said Official Public Records;

THENCE: S 84°07'10" E, with a north line of said 4.462 acre tract and with the south line of said 0.341 acre tract, a distance of 50.00 feet to a point at a reentrant corner of said 4.462 acre tract and at the southeast corner of said 0.341 acre tract;

THENCE: N 00°48'40" W, with the west line of said 4.462 acre tract and with the east line of said 0.341 acre tract, a distance of 163.52 feet to a point at the northwest corner of said 4.462 acre tract, at the northeast corner of said 0.341 acre tract, and on the south right-of-way line of said New Sulfur Springs Road;

THENCE: With the south right-of-way line of said New Sulfur Springs Road and with the north line of said 4.462 acre tract, the following bearings and distances:

S 81°07'16" E, a distance of 158.35 feet to a point;

Southeasterly, along a tangent curve to the right, said curve having a radius of 1377.45 feet, a central angle of 09°17'54", a chord bearing and distance of S 76°28'20" E, 223.29 feet, for an arc length of 223.54 feet to the POINT OF BEGINNING and containing 48.2 acres in Bexar County, Texas. Said tract being described in conjunction with an exhibit prepared under job number 12768-02 by Pape-Dawson Engineers.

This document was prepared under 22TAC138.95, does not reflect the results of an on the ground survey, and is not to be used to convey or establish interests in real property except those rights and interests implied or established by the creation or reconfiguration of the boundary of the political subdivision for which it was prepared.



PREPARED BY:	Pape-Dawson Engineers
DATE:	February 15, 2024
REVISED:	June 25, 2024
JOB NO.	12768-02
DOC. ID.	N:\CIVIL\12768-02\Word\12768-02 FNZN 48.2 AC.docx