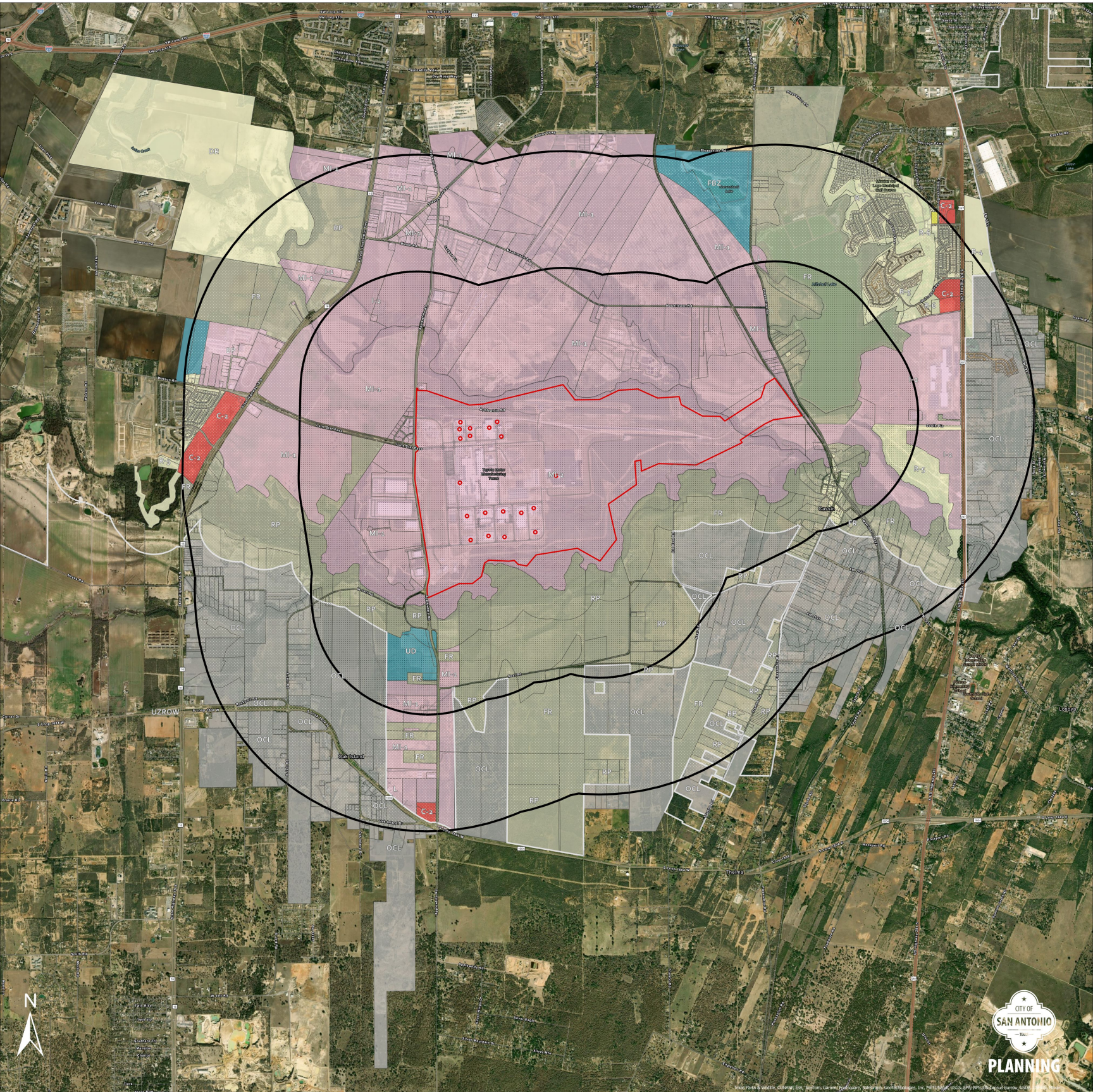


Industrial Compatibility Overlay District - ICOD-1

City of San Antonio Planning Department



Legend

CoSA Zoning

Zoning District

- Residential Districts (DR, R-20, R-6, R-5, R-4)
- Multi-Family Districts (MF-18)
- Commercial Districts (C-2, C-3)
- Office Districts (O-1.5)
- Industrial Districts (L, BP, I-1, MI-1, I-2, MI-2)

Farm/Ranch, Resource Protection Districts (FR, RP)

Special Districts/Other (UD, FBZ)

Outside City Limits (OCL)

ICOD 1 - Zone A

ICOD 1 - Zone B

City of San Antonio Boundary

ICOD Base Site

0 1/2 1 2 Miles

The current rezoning case only applies to properties that are located within the city limits of San Antonio. For properties located outside of the current city limits of San Antonio, the overlay district will be added to properties within the 2-mile buffer upon annexation.

"This Geographic Information System Product, received from the City of San Antonio is provided "as is" without warranty of any kind, and the City of San Antonio expressly disclaims all express and implied warranties, including but not limited to the implied warranties of merchantability and fitness for a particular purpose. The City of San Antonio does not warrant, guarantee, or make any representations regarding the use, or the results of the use, of the information provided to you by the City of San Antonio in terms of correctness, accuracy, reliability, timeliness or otherwise. The entire risk as to the results and performance of any information obtained from the City of San Antonio is entirely assumed by the recipient."

Data Sources: City of San Antonio Enterprise GIS, Bexar Metro 911, Bexar Appraisal District

Created By: City of San Antonio Planning Department

Date Saved: 4/29/2024 1:12 PM