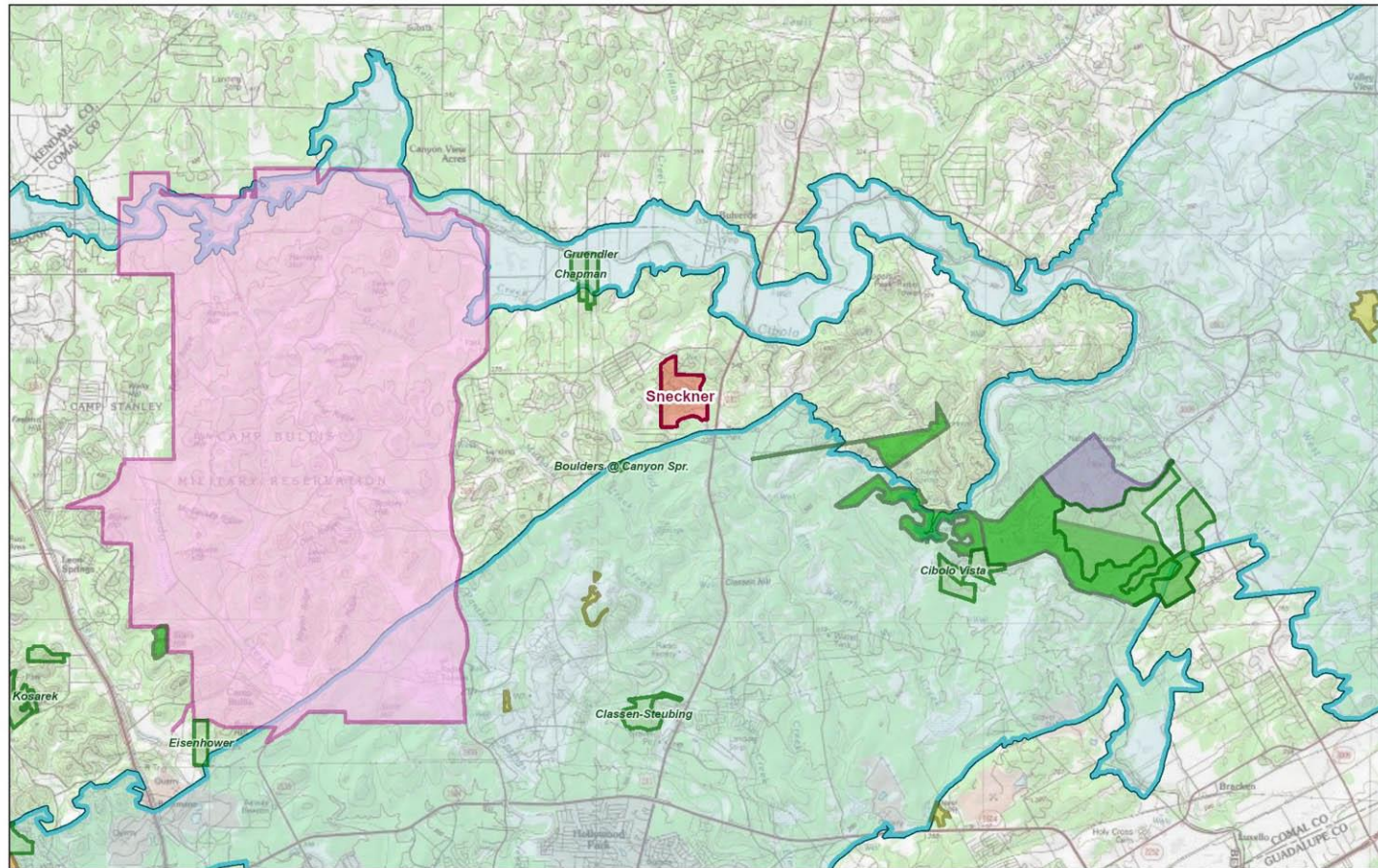




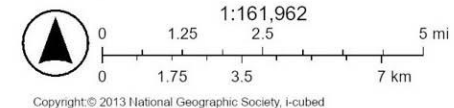
Sneckner Ranch

Sneckner Ranch (~378 acres) Bexar County



5/21/2025, 1:50:17 PM

- | | | |
|--|--|--|
|  CAB Projects |  Land Trust Managed Land |  Private Preserve |
|  EAPP Tracts |  Other Conservation Easement |  Recharge Zone |
|  TNC |  JBSA-Camp Bullis | |



Sneckner Ranch (~378 acres) Bexar County

- ~100% EACZ
- Top 20% SET Model
- Located east of Boulders property in northern Bexar County
- Owners seeking conservation easement
- Requesting Stage 1 consideration



Sneckner Ranch (~378 acres) Bexar County





Sneckner Ranch (~378 acres) Bexar County

