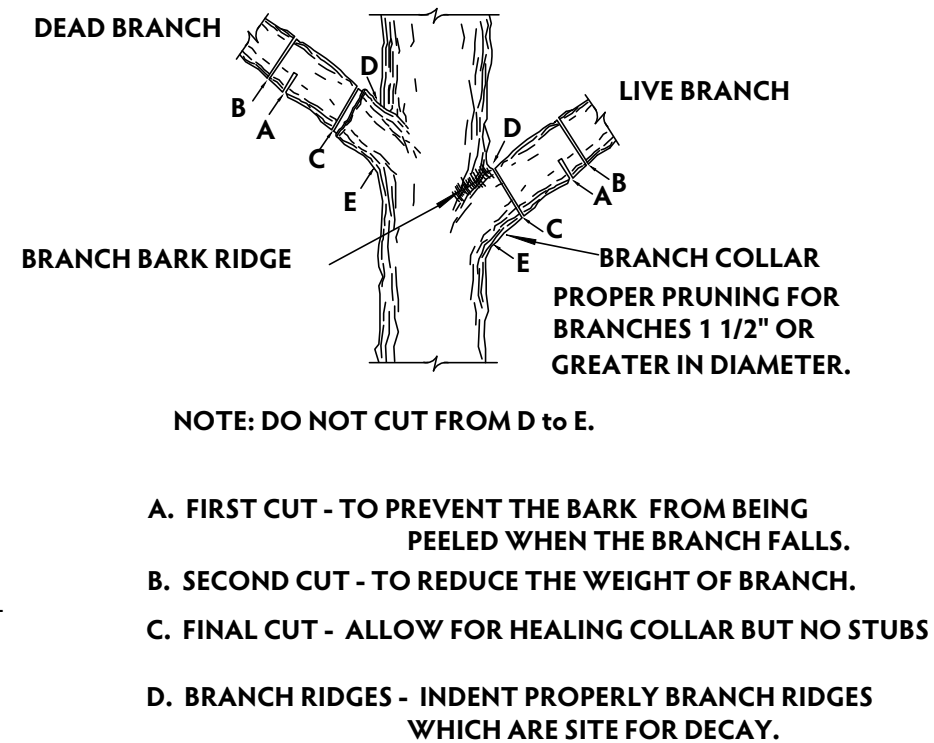
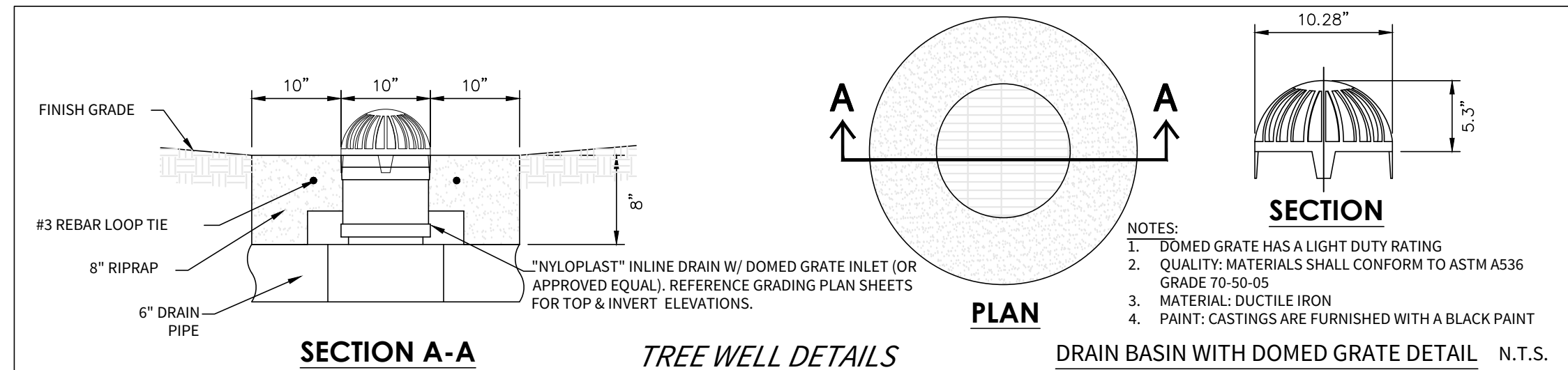


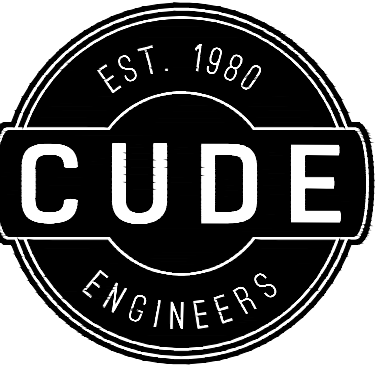
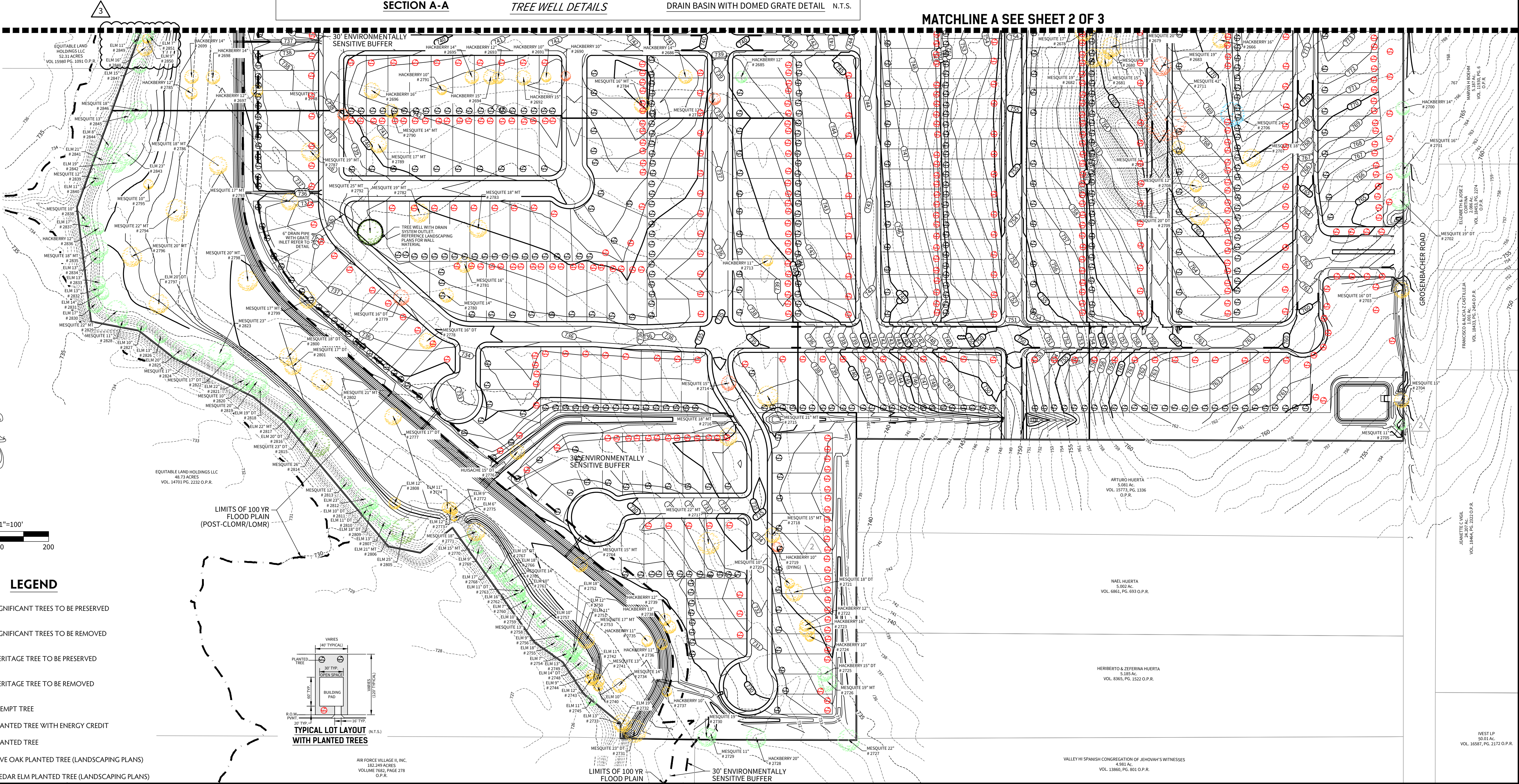
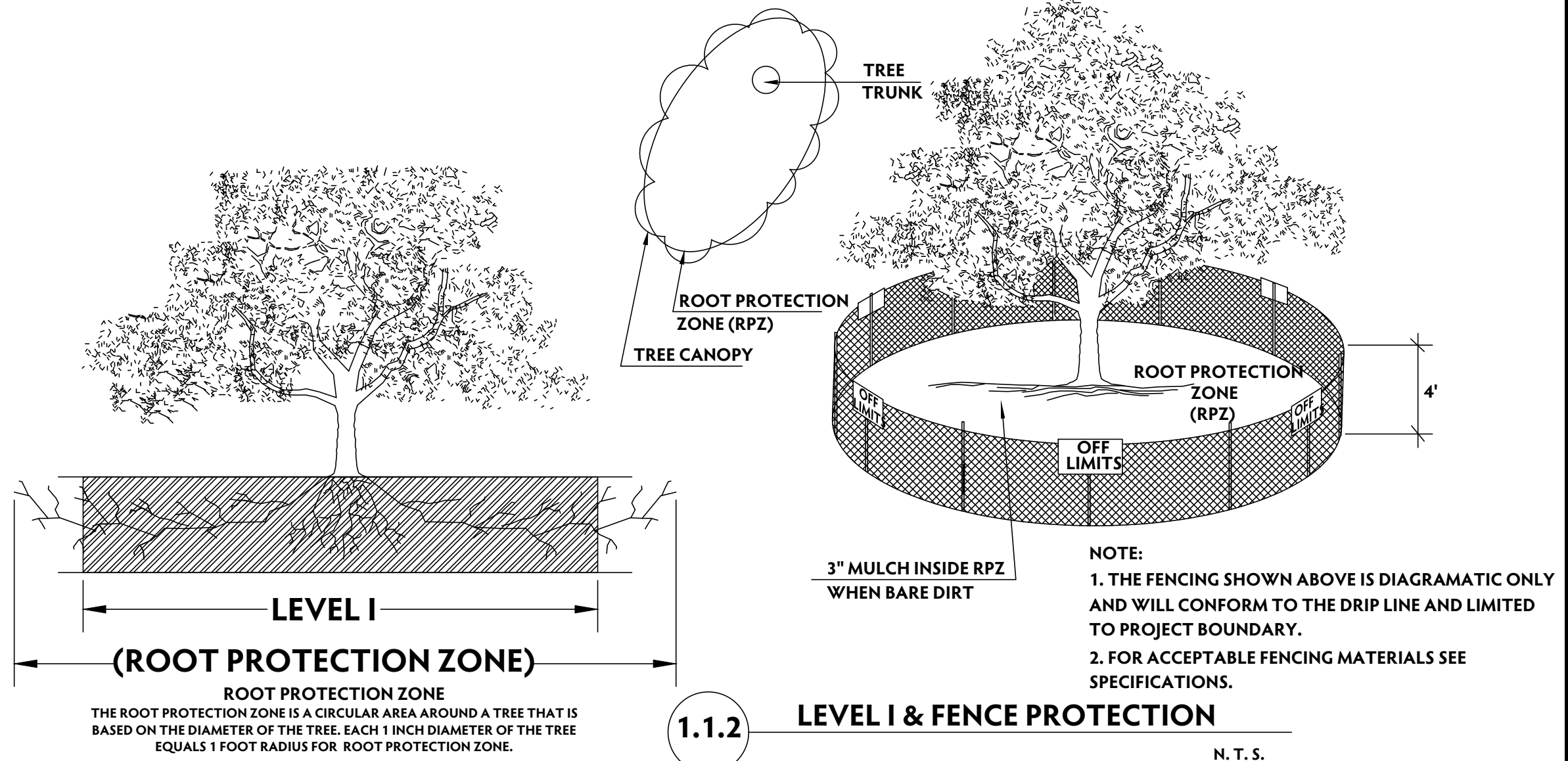
DEVELOPER
CONTINENTAL HOMES OF TEXAS, L.P.
CONTACT PERSON: JAMES HINDMARSH
211 N LOOP 1604 E, STE. 130
SAN ANTONIO, TX 78232
TEL: (210) 496-2668
FAX: (210) 582-0961

- NOTES:**
1. STONEY CREEK SUBDIVISION IS SUBJECT TO THE CITY OF SAN ANTONIO 2010 TREE ORDINANCE.
 2. NON-EXEMPT TREES ARE CLASSIFIED AS TREES LOCATED OUTSIDE EXEMPT AREAS (STREET R.O.W. & EASEMENTS) & ARE THE TREES USED IN CALCULATING MINIMUM PRESERVATION REQUIREMENTS PER THE 2010 TREE ORDINANCE.
 3. ANY SUBSEQUENT NOTES DEALING WITH ROOT PROTECTION DO NOT APPLY TO RESIDENTIAL DEVELOPMENTS.
 4. ALL EXISTING TREES DENOTED ON THIS PLAN TO BE PRESERVED AS SHOWN AND PROTECTED AT THE ROOT PROTECTION ZONE (RPZ). THE RPZ SHALL BE DETERMINED BY TREE SIZE (RECOMMENDED 12" RADIUS FROM TRUNK FOR EVERY 1" DIAMETER OF TRUNK AT 4.5' FROM GROUND) WITH A MINIMUM 5' DIAMETER FROM THE TRUNK.
 5. A (CHAINLINK OR ORANGE MESH FENCE) BARRIER AROUND THE RPZ SHALL BE ERCTED AND MAINTAINED UNTIL CONSTRUCTION IS COMPLETED.
 6. RPZ SHALL BE SUSTAINED IN A NATURAL STATE AND SHALL BE FREE FROM VEHICULAR OR MECHANICAL TRAFFIC; NO FILL, EQUIPMENT, LIQUIDS, OR CONSTRUCTION DEBRIS SHALL BE PLACED INSIDE THE PROTECTIVE BARRIER.
 7. THE RPZ SHALL BE COVERED WITH 6" OF COARSE MULCH TO REDUCE MOISTURE STRESS.
 8. ANY DAMAGE DONE TO EXISTING TREE CROWNS OR ROOT SYSTEMS SHALL BE REPAIRED IMMEDIATELY. ALL WOUNDS TO OAKS WILL BE PAINTED WITH PRUNING PAINT WITHIN 30 MINUTES AFTER DAMAGE. ROOTS EXPOSED DURING CONSTRUCTION OPERATIONS WILL BE CUT CLEANLY.
 9. THE PROPOSED FINISH GRADE AND ELEVATION OF LAND WITHIN THE ROOT PROTECTION ZONE OF ANY TREE TO BE PRESERVED SHALL NOT BE RAISED OR LOWERED MORE THAN 3". WELLING AND RETAINING METHODS ARE ALLOWED OUTSIDE THE RPZ.
 10. THE RPZ SHALL REMAIN PERVIOUS, I.E. GROUND COVER OR TURF AT COMPLETION OF LANDSCAPE DESIGN.
 11. PROTECTED TREES SHALL BE PROTECTED UNTIL SUCH TIME AS THE CONCRETE WORK CAN BE STAKED TO DETERMINE ITS DISTANCE FROM SIGNIFICANT TREES. (IF FOUND THAT THE CONCRETE WORK WILL BE CLOSER THAN 5', THE CONTRACTOR WILL MEET WITH REPRESENTATIVES OF THE ENVIRONMENTAL REVIEW DEPARTMENT TO MINIMIZE IMPACT.)
 12. CONTRACTOR TO UPDATE TREE PRESERVATION PLAN FOR CHANGES DURING CONSTRUCTION AND NOTIFY ENGINEER ACCORDINGLY. THE REVISED TREE PRESERVATION PLAN WILL BE RESUBMITTED AND APPROVED BY THE CITY OF SAN ANTONIO ARBORIST DEPARTMENT UPON FINAL ACCEPTANCE OF ALL SUBDIVISION IMPROVEMENTS.
 13. NO MORE THAN 25% OF TREES PLANTED FOR MITIGATION SHALL BE OF THE SAME SPECIES.
 14. TWO (2) 1.5" CALIPER TREES REQUIRED TO BE PLANTED ON EACH RESIDENTIAL LOT.
 15. NOTE: TYPICAL BUILDING SETBACK DIMENSIONS ARE:
FRONT = 20'
REAR = 20'
SIDE = 5'
SIDE ADJACENT TO STREET = 10'



- A. FIRST CUT - TO PREVENT THE BARK FROM BEING PEELED WHEN THE BRANCH FALLS.**
B. SECOND CUT - TO REDUCE THE WEIGHT OF BRANCH.
C. FINAL CUT - ALLOW FOR HEALING COLLAR BUT NO STUBS
D. BRANCH RIDGES - INDENT PROPERLY BRANCH RIDGES WHICH ARE SITE FOR DECAY.

FOR OAKS ONLY: PAINT ALL WOUNDS OR CUTS WITH PRUNING PAINT WITHIN 20 MIN TO PREVENT THE SPREAD OF OAK WILT.



4122 Pond Hill Road, Suite 101
San Antonio, Texas 78231
P:(210) 681.2951 F:(210) 523.7112

STONEY CREEK SUBDIVISION

TREE PRESERVATION PLAN

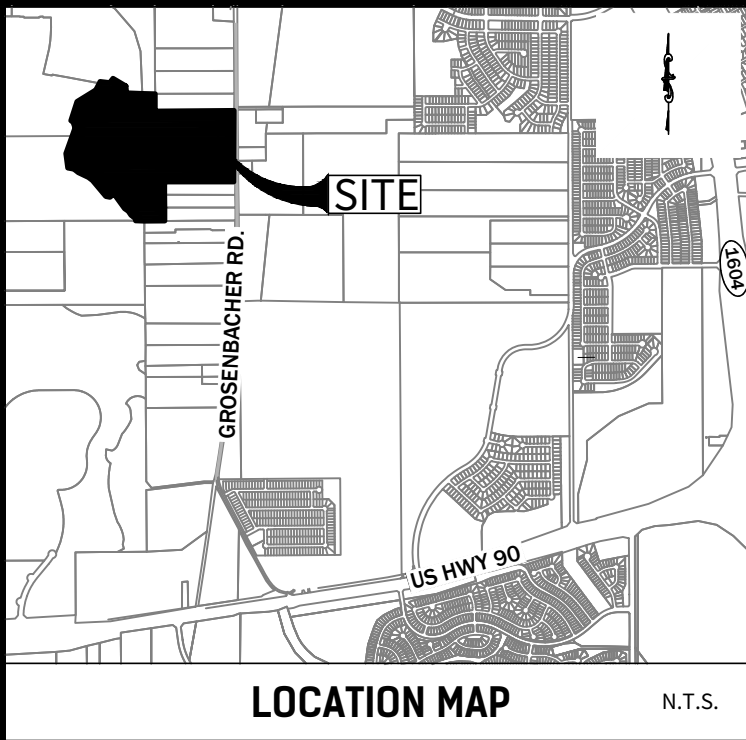
DATE
09/03/2019
PROJECT NO.
03056.004
DRAWN BY
MJS
CHECKED BY
WPM

REVISIONS	
1.	04/15/2020 - REVISED TREE PRESERVATION, CALCS AND PLANTING
2.	06/02/2020 - UPDATE TREES 2719 AND 2705
3.	07/12/2024 - UPDATE TREES 2848 AND 2850
4.	
5.	
6.	
7.	
8.	
9.	

CUDE ENGINEERS
TBPE No. 455
TBPLS No. 10048500

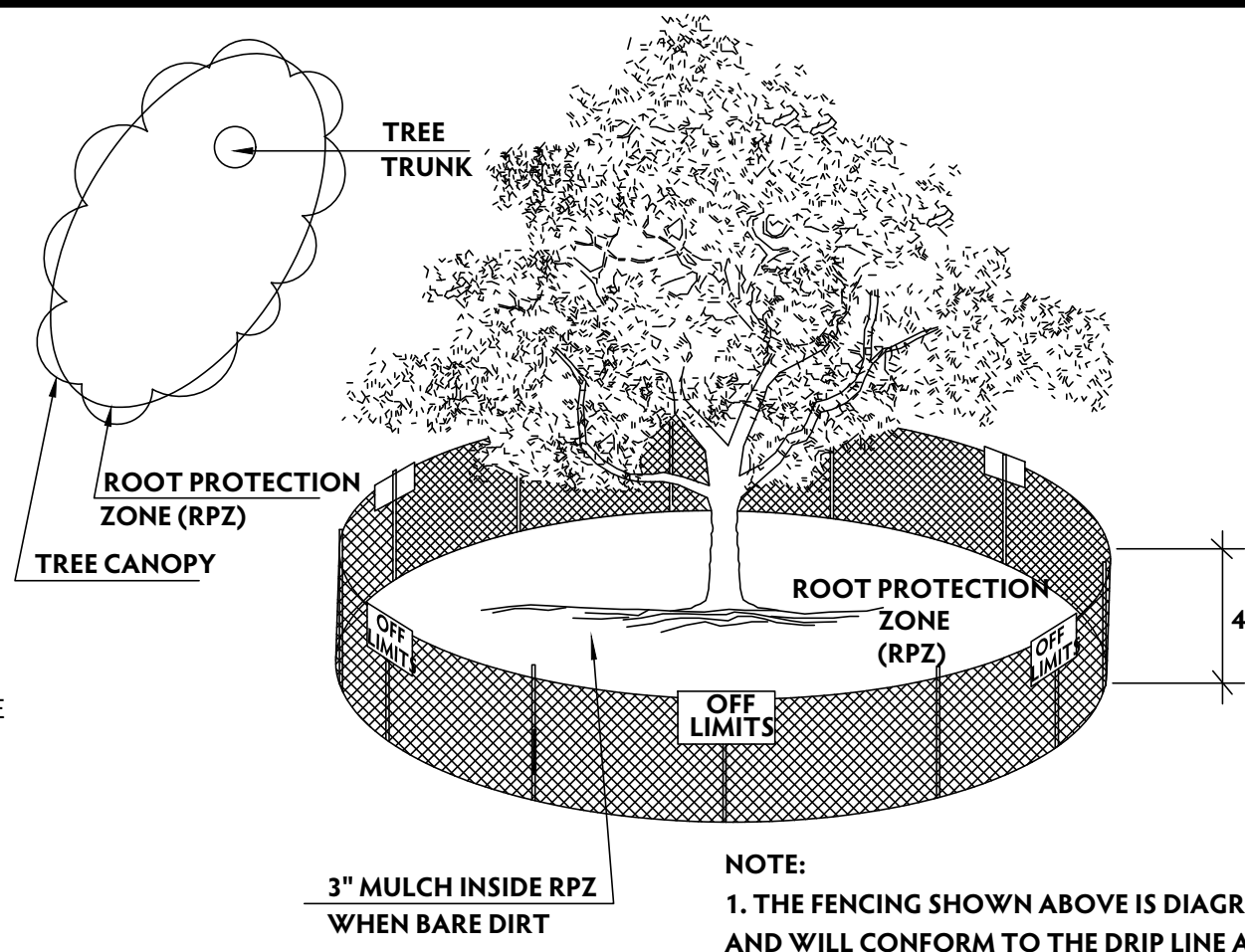
PLAT NO.
N/A

E1



DEVELOPER
CONTINENTAL HOMES OF TEXAS, L.P.
CONTACT PERSON: JAMES HINDMARSH
211 N LOOP 1604 E, STE. 130
SAN ANTONIO, TX 78232
TEL: (210) 496-2668
FAX: (210) 582-0961

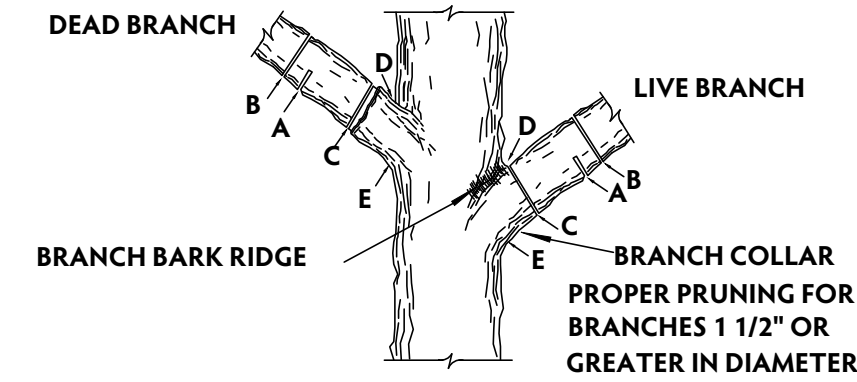
- NOTES:**
1. STONEY CREEK SUBDIVISION IS SUBJECT TO THE CITY OF SAN ANTONIO 2010 TREE ORDINANCE.
 2. NON-EXEMPT TREES ARE CLASSIFIED AS TREES LOCATED OUTSIDE EXEMPT AREAS (STREET R.O.W. & EASEMENTS) & ARE THE TREES USED IN CALCULATING MINIMUM PRESERVATION REQUIREMENTS PER THE 2010 TREE ORDINANCE.
 3. ANY SUBSEQUENT NOTES DEALING WITH ROOT PROTECTION DO NOT APPLY TO RESIDENTIAL DEVELOPMENTS.
 4. ALL EXISTING TREES DENOTED ON THIS PLAN TO BE PRESERVED AS SHOWN AND PROTECTED AT THE ROOT PROTECTION ZONE (RPZ). THE RPZ SHALL BE DETERMINED BY TREE SIZE (RECOMMENDED 12" RADIUS FROM TRUNK FOR EVERY 1" DIAMETER OF TRUNK AT 4.5' FROM GROUND) WITH A MINIMUM 5' DIAMETER FROM THE TRUNK.
 5. A (CHAINLINK OR ORANGE MESH FENCE) BARRIER AROUND THE RPZ SHALL BE ERRECTED AND MAINTAINED UNTIL CONSTRUCTION IS COMPLETED.
 6. RPZ SHALL BE SUSTAINED IN A NATURAL STATE AND SHALL BE FREE FROM VEHICULAR OR MECHANICAL TRAFFIC; NO FILL, EQUIPMENT, LIQUIDS, OR CONSTRUCTION DEBRIS SHALL BE PLACED INSIDE THE PROTECTIVE BARRIER.
 7. THE RPZ SHALL BE COVERED WITH 6" OF COARSE MULCH TO REDUCE MOISTURE STRESS.
 8. ANY DAMAGE DONE TO EXISTING TREE CROWNS OR ROOT SYSTEMS SHALL BE REPAIRED IMMEDIATELY. ALL WOUNDS TO OAKS WILL BE PAINTED WITH PRUNING PAINT WITHIN 30 MINUTES AFTER DAMAGE. ROOTS EXPOSED DURING CONSTRUCTION OPERATIONS WILL BE CUT CLEANLY.
 9. THE PROPOSED FINISH GRADE AND ELEVATION OF LAND WITHIN THE ROOT PROTECTION ZONE OF ANY TREE TO BE PRESERVED SHALL NOT BE RAISED OR LOWERED MORE THEN 3". WELLING AND RETAINING METHODS ARE ALLOWED OUTSIDE THE RPZ.
 10. THE RPZ SHALL REMAIN PERVIOUS, I.E. GROUND COVER OR TURF AT COMPLETION OF LANDSCAPE DESIGN.
 11. PROTECTED TREES SHALL BE PROTECTED UNTIL SUCH TIME AS THE CONCRETE WORK CAN BE STAKED TO DETERMINE ITS DISTANCE FROM SIGNIFICANT TREES. (IF FOUND THAT THE CONCRETE WORK WILL BE CLOSER THAN 5', THE CONTRACTOR WILL MEET WITH REPRESENTATIVES OF THE ENVIRONMENTAL REVIEW DEPARTMENT TO MINIMIZE IMPACT.)
 12. CONTRACTOR TO UPDATE TREE PRESERVATION PLAN FOR CHANGES DURING CONSTRUCTION AND NOTIFY ENGINEER ACCORDINGLY. THE REVISED TREE PRESERVATION PLAN WILL BE RESUBMITTED AND APPROVED BY THE CITY OF SAN ANTONIO ARBORIST DEPARTMENT UPON FINAL ACCEPTANCE OF ALL SUBDIVISION IMPROVEMENTS.
 13. NO MORE THAN 25% OF TREES PLANTED FOR MITIGATION SHALL BE OF THE SAME SPECIES.
 14. TWO (2) 1.5" CALIPER TREES REQUIRED TO BE PLANTED ON EACH RESIDENTIAL LOT.
 15. NOTE: TYPICAL BUILDING SETBACK DIMENSIONS ARE:
FRONT = 20'
REAR = 20'
SIDE = 5'
SIDE ADJACENT TO STREET = 10'



- NOTE:**
1. THE FENCING SHOWN ABOVE IS DIAGRAMATIC ONLY AND WILL CONFORM TO THE DRIP LINE AND LIMITED TO PROJECT BOUNDARY.
 2. FOR ACCEPTABLE FENCING MATERIALS SEE SPECIFICATIONS.

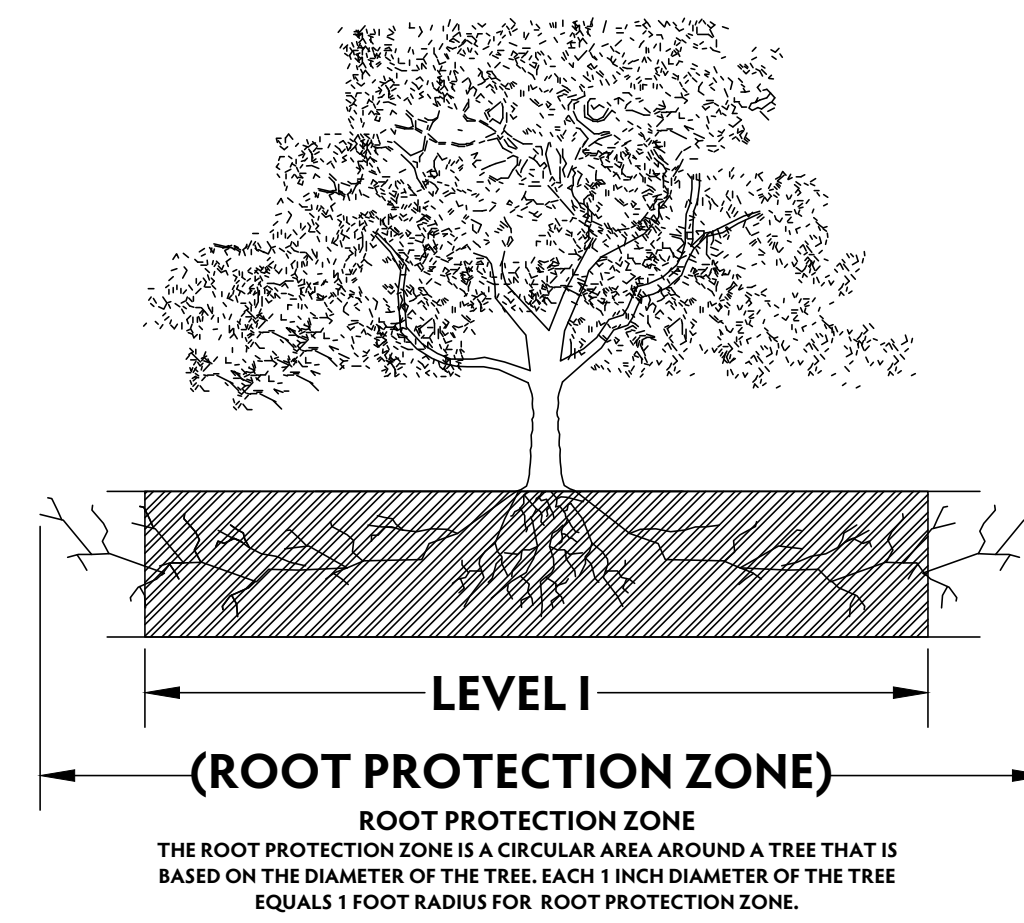
1.1.2 LEVEL I & FENCE PROTECTION

N.T.S.



- A. FIRST CUT - TO PREVENT THE BARK FROM BEING PEELED WHEN THE BRANCH FALLS.
- B. SECOND CUT - TO REDUCE THE WEIGHT OF BRANCH.
- C. FINAL CUT - ALLOW FOR HEALING COLLAR BUT NO STUBS
- D. BRANCH RIDGES - INDENT PROPERLY BRANCH RIDGES WHICH ARE SITE FOR DECAY.

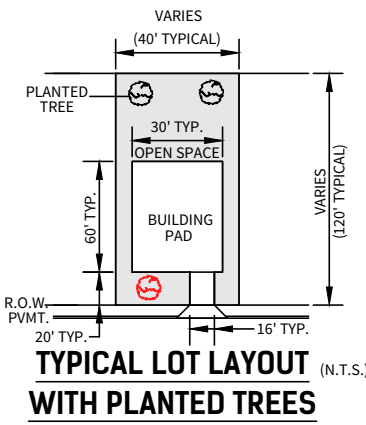
FOR OAKS ONLY: PAINT ALL WOUNDS OR CUTS WITH PRUNING PAINT WITHIN 20 MIN TO PREVENT THE SPREAD OF OAK WILT.



ROOT PROTECTION ZONE
THE ROOT PROTECTION ZONE IS A CIRCULAR AREA AROUND A TREE THAT IS BASED ON THE DIAMETER OF THE TREE. EACH 1 INCH DIAMETER OF THE TREE EQUALS 1 FOOT RADIUS FOR ROOT PROTECTION ZONE.

LEGEND

- SIGNIFICANT TREES TO BE PRESERVED
- SIGNIFICANT TREES TO BE REMOVED
- HERITAGE TREE TO BE PRESERVED
- HERITAGE TREE TO BE REMOVED
- EXEMPT TREE
- PLANTED TREE WITH ENERGY CREDIT
- PLANTED TREE
- LIVE OAK PLANTED TREE (LANDSCAPING PLANS)
- CEDAR ELM PLANTED TREE (LANDSCAPING PLANS)



PRESERVATION CALCULATIONS - SIGNIFICANT TREES (OUTSIDE OF ESA & FLOODPLAIN)	
SIGNIFICANT TREES TOTAL INCHES	= 934 INCHES
SIGNIFICANT TREES PRESERVED INCHES	= 202 INCHES
SIGNIFICANT TREES REMOVED INCHES	= 732 INCHES
SIGNIFICANT TREES PRESERVATION RATE (35% REQ.)	= 21.63%
EXCESS PRESERVATION CREDIT/ DEFICIT (ABOVE 35% REQ.)	= 125 INCHES (DEFICIT)

PRESERVATION CALCULATIONS - HERITAGE (OUTSIDE OF ESA & FLOODPLAIN)	
HERITAGE TREES TOTAL INCHES	= 49 INCHES
HERITAGE TREES PRESERVED INCHES	= 25 INCHES
HERITAGE TREES REMOVED INCHES	= 24 INCHES
HERITAGE TREES PRESERVATION RATE (100% REQ.)	= 51.02%
HERITAGE TREE PRESERVATION DEFICIT	= (24 x 1) = 24 INCHES

PRESERVATION CALCULATIONS - SIGNIFICANT TREES (INSIDE OF ESA)	
SIGNIFICANT TREES TOTAL INCHES	= 90 INCHES
SIGNIFICANT TREES PRESERVED INCHES	= 36 INCHES
SIGNIFICANT TREES REMOVED INCHES	= 54 INCHES
SIGNIFICANT TREES PRESERVATION RATE (80% REQ.)	= 40.00% (VARIANCE REQUIRED)
SIGNIFICANT TREE DEFICIT	= 36 INCHES

PRESERVATION CALCULATIONS - HERITAGE (INSIDE OF ESA)	
	N/A

PRESERVATION CALCULATIONS - SIGNIFICANT TREES (INSIDE THE FLOOD PLAIN)	
SIGNIFICANT TREES TOTAL INCHES	= 2428 INCHES
SIGNIFICANT TREES PRESERVED INCHES	= 1847 INCHES
SIGNIFICANT TREES REMOVED INCHES	= 581 INCHES
SIGNIFICANT TREES PRESERVATION RATE (80% REQ.)	= 76.07% (VARIANCE REQUIRED)
SIGNIFICANT TREE DEFICIT	= 95.4 INCHES

PRESERVATION CALCULATIONS - HERITAGE (INSIDE OF FLOOD PLAIN)	
HERITAGE TREES TOTAL INCHES	= 179 INCHES
HERITAGE TREES PRESERVED INCHES	= 179 INCHES
HERITAGE TREES REMOVED INCHES	= 0 INCHES
HERITAGE TREES PRESERVATION RATE (100% REQ.)	= 100%
HERITAGE TREE PRESERVATION DEFICIT	= 0 INCHES

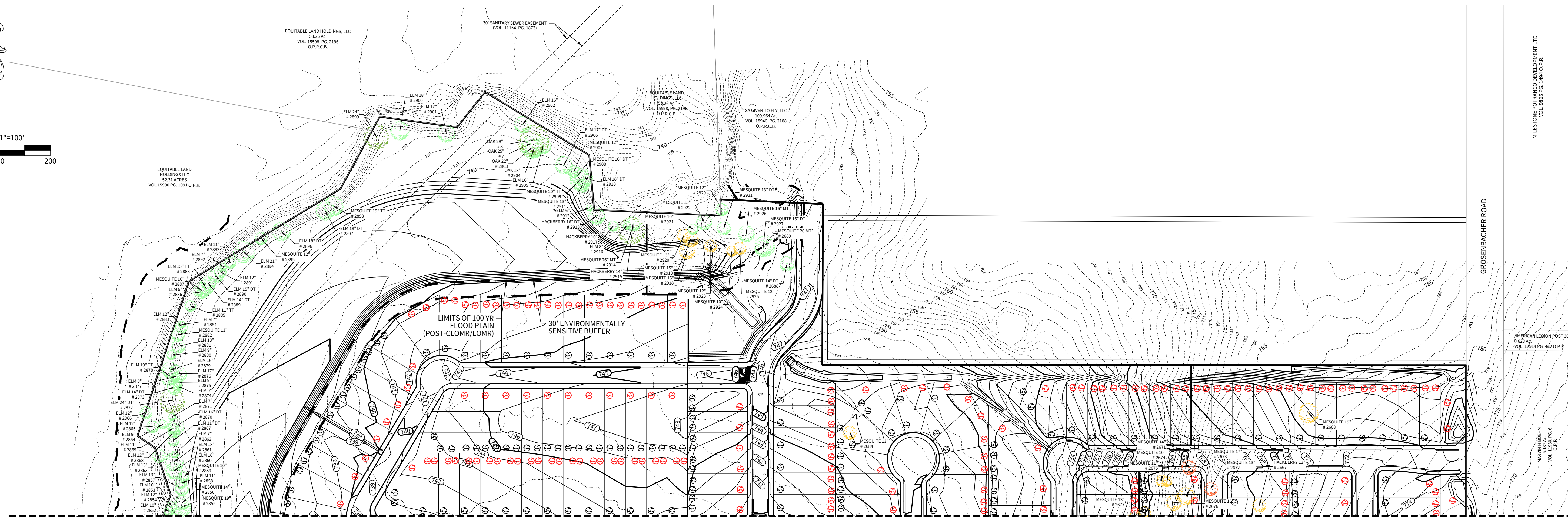
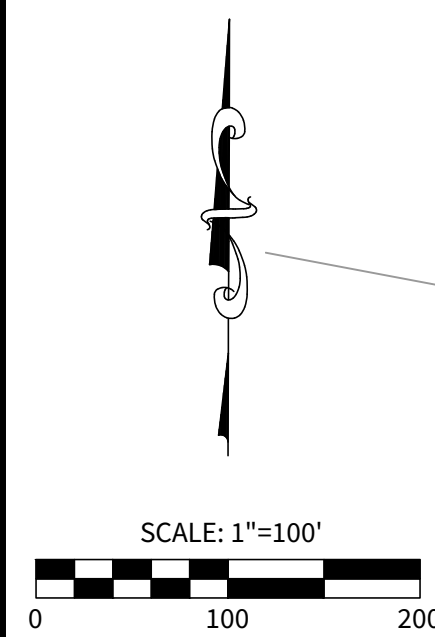
MITIGATION SUMMARY	
SIGNIFICANT TREES (OUTSIDE OF ESA & FLOOD PLAIN)	125 INCHES (DEFICIT)
HERITAGE TREES (OUTSIDE OF ESA & FLOOD PLAIN)	24 INCHES (DEFICIT)
SIGNIFICANT TREES (INSIDE OF ESA)	36 INCHES (DEFICIT)
SIGNIFICANT TREES (INSIDE OF FLOODPLAIN)	95.4 INCHES (DEFICIT)
TOTAL MITIGATION	280.4 INCHES

PLANTED TREES (ABOVE TWO ~ 1.5 INCH REQ. PER LOT)	595.5 INCHES (CREDIT)
(397 EXTRA TREES X 1.5 INCH)	

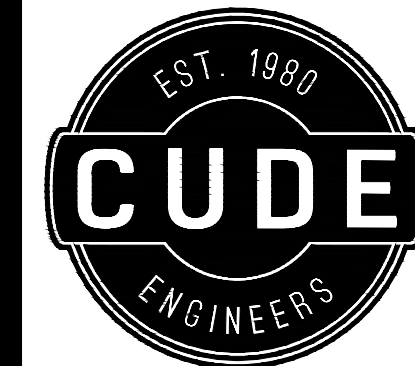
TOTAL:	315.1 INCH CREDIT
--------	-------------------

FINAL CANOPY CALCULATIONS	
TOTAL PARCEL AREA (OUTSIDE OF FUTURE FLOODPLAIN)	= 2,937,752 S.F.
REQUIRED FINAL CANOPY COVERAGE (38% REQ.)	= 1,116,346 S.F.
PRESERVED TREE CANOPY	= 9,519 S.F.
PLANTED TREE-NO ENERGY CREDIT (561 x 875 S.F. x 0.9)	= 441,788 S.F.
PLANTED TREE-ENERGY CREDIT (582 x 875 S.F. x 0.9 x 1.5)	= 687,488 S.F.

FINAL TOTAL CANOPY	= 1,138,795 S.F. (38.76 %)
--------------------	----------------------------



MATCHLINE A SEE SHEET 1 OF 3



4122 Pond Hill Road, Suite 101
San Antonio, Texas 78231
P:(210) 681.2951 F:(210) 523.7112

STONEY CREEK SUBDIVISION

TREE PRESERVATION PLAN

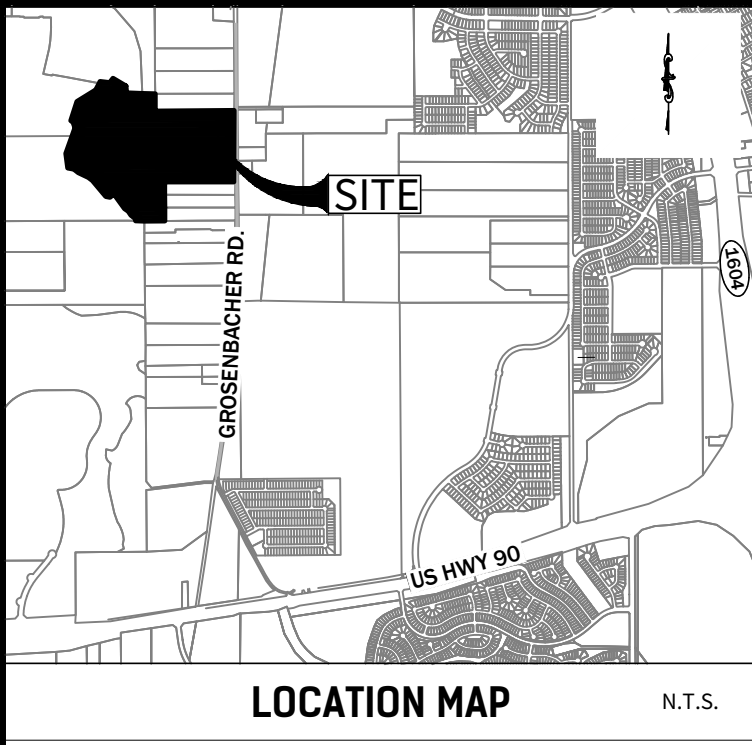
DATE	09/03/2019
PROJECT NO.	03056.004
DRAWN BY	MJS
CHECKED BY	WPM

REVISIONS	
1.	04/15/2020 - REVISED TREE PRESERVATION, CALCS AND PLANTING
2.	06/02/2020 - UPDATE TREES 2719 AND 2705
3.	07/12/2024 - UPDATE TREES 2848 AND 2850
4.	
5.	
6.	
7.	
8.	
9.	

CUDE ENGINEERS
TBPE No. 455
TBPLS No. 10048500

PLAT NO.
N/A

E2

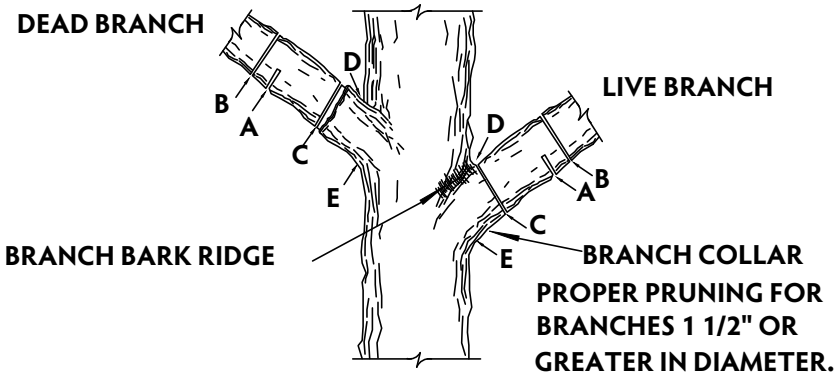


DEVELOPER
CONTINENTAL HOMES OF TEXAS, L.P.
CONTACT PERSON: JAMES HINDMARSH
211 N LOOP 1604 E, STE. 130
SAN ANTONIO, TX 78232
TEL: (210) 496-2668
FAX: (210) 582-0961

* DENOTES TREES WITHIN FLOOD PLAIN.

NOTES:

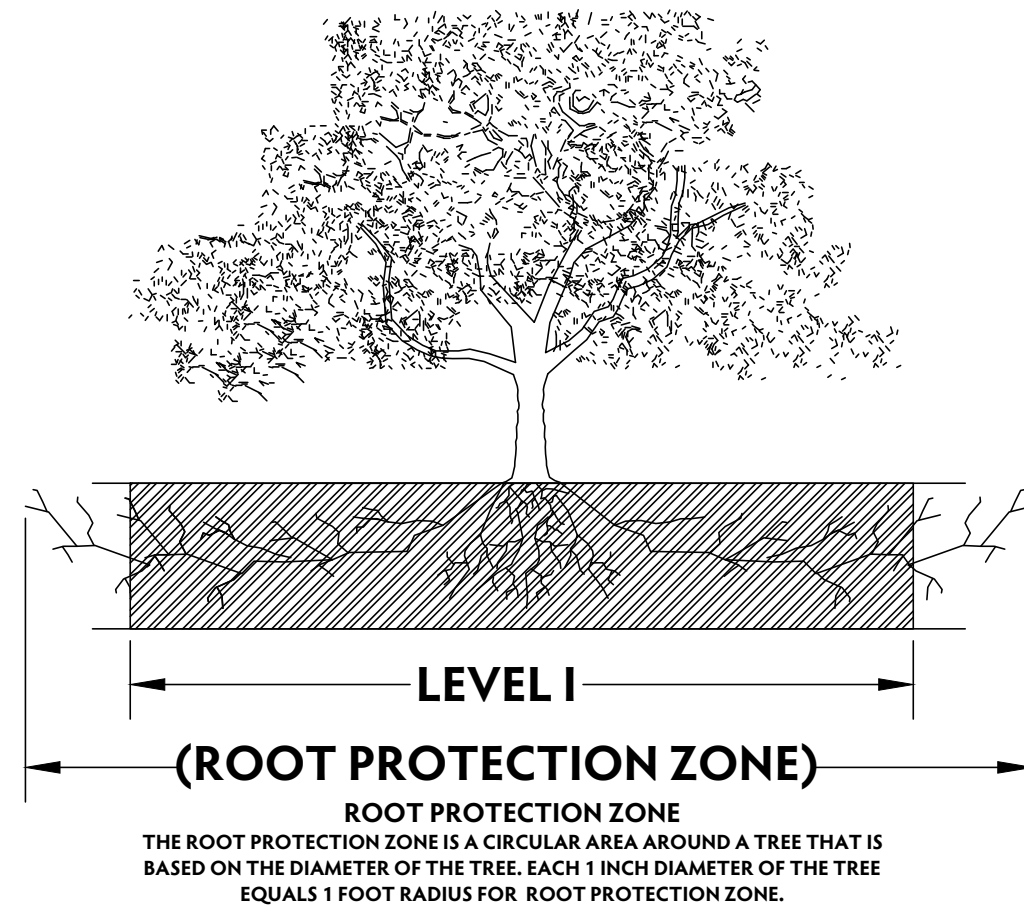
1. STONEY CREEK SUBDIVISION IS SUBJECT TO THE CITY OF SAN ANTONIO 2010 TREE ORDINANCE.
2. NON-EXEMPT TREES ARE CLASSIFIED AS TREES LOCATED OUTSIDE EXEMPT AREAS (STREET R.O.W. & EASEMENTS) & ARE THE TREES USED IN CALCULATING MINIMUM PROTECTION REQUIREMENTS PER THE 2010 TREE ORDINANCE.
3. ANY SUBSEQUENT NOTES DEALING WITH ROOT PROTECTION DO NOT APPLY TO RESIDENTIAL DEVELOPMENTS.
4. ALL EXISTING TREES DENOTED ON THIS PLAN TO BE PRESERVED AS SHOWN AND PROTECTED AT THE ROOT PROTECTION ZONE (RPZ). THE RPZ SHALL BE DETERMINED BY TREE SIZE (RECOMMENDED 12" RADIUS FROM TRUNK FOR EVERY 1" DIAMETER OF TRUNK AT 4.5' FROM GROUND) WITH A MINIMUM 5' DIAMETER FROM THE TRUNK.
5. A (CHAINLINK OR ORANGE MESH FENCE) BARRIER AROUND THE RPZ SHALL BE ERCTED AND MAINTAINED UNTIL CONSTRUCTION IS COMPLETED.
6. RPZ SHALL BE SUSTAINED IN A NATURAL STATE AND SHALL BE FREE FROM VEHICULAR OR MECHANICAL TRAFFIC; NO FILL, EQUIPMENT, LIQUIDS, OR CONSTRUCTION DEBRIS SHALL BE PLACED INSIDE THE PROTECTIVE BARRIER.
7. THE RPZ SHALL BE COVERED WITH 6" OF COARSE MULCH TO REDUCE MOISTURE STRESS.
8. ANY DAMAGE DONE TO EXISTING TREE CROWNS OR ROOT SYSTEMS SHALL BE REPAIRED IMMEDIATELY. ALL WOUNDS TO OAKS WILL BE PAINTED WITH PRUNING PAINT WITHIN 30 MINUTES AFTER DAMAGE. ROOTS EXPOSED DURING CONSTRUCTION OPERATIONS WILL BE CUT CLEANLY.
9. THE PROPOSED FINISH GRADE AND ELEVATION OF LAND WITHIN THE ROOT PROTECTION ZONE OF ANY TREE TO BE PRESERVED SHALL NOT BE RAISED OR LOWERED MORE THEN 3". WELLING AND RETAINING METHODS ARE ALLOWED OUTSIDE THE RPZ.
10. THE RPZ SHALL REMAIN PERVIOUS, I.E. GROUND COVER OR TURF AT COMPLETION OF LANDSCAPE DESIGN.
11. PROTECTED TREES SHALL BE PROTECTED UNTIL SUCH TIME AS THE CONCRETE WORK CAN BE STAKED TO DETERMINE ITS DISTANCE FROM SIGNIFICANT TREES. (IF FOUND THAT THE CONCRETE WORK WILL BE CLOSER THAN 5', THE CONTRACTOR WILL MEET WITH REPRESENTATIVES OF THE ENVIRONMENTAL REVIEW DEPARTMENT TO MINIMIZE IMPACT.)
12. CONTRACTOR TO UPDATE TREE PRESERVATION PLAN FOR CHANGES DURING CONSTRUCTION AND NOTIFY ENGINEER ACCORDINGLY. THE REVISED TREE PRESERVATION PLAN WILL BE RESUBMITTED AND APPROVED BY THE CITY OF SAN ANTONIO ARBORIST UPON FINAL ACCEPTANCE OF ALL SUBDIVISION DEVELOPMENTS.
13. NO MORE THAN 25% OF TREES PLANTED FOR MITIGATION SHALL BE OF THE SAME SPECIES.
14. TWO (2) 1.5" CALIPER TREES REQUIRED TO BE PLANTED ON EACH RESIDENTIAL LOT.
15. NOTE: TYPICAL BUILDING SETBACK DIMENSIONS ARE:
FRONT = 20'
REAR = 20'
SIDE = 5'
SIDE ADJACENT TO STREET = 10'



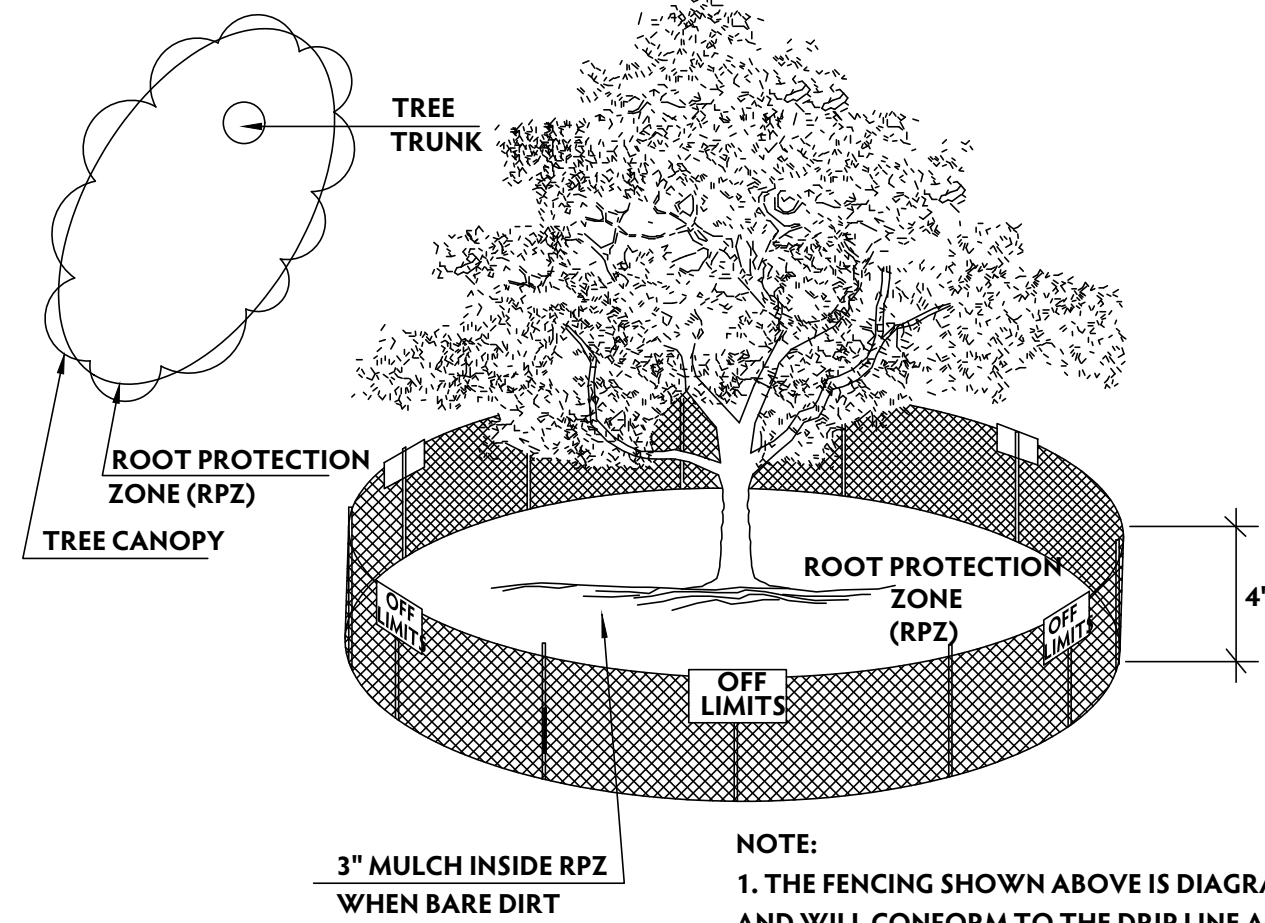
NOTE: DO NOT CUT FROM D to E.

- A. FIRST CUT - TO PREVENT THE BARK FROM BEING PEELED WHEN THE BRANCH FALLS.
- B. SECOND CUT - TO REDUCE THE WEIGHT OF BRANCH.
- C. FINAL CUT - ALLOW FOR HEALING COLLAR BUT NO STUBS
- D. BRANCH RIDGES - INDENT PROPERLY BRANCH RIDGES WHICH ARE SITE FOR DECAY.

FOR OAKS ONLY: PAINT ALL WOUNDS OR CUTS WITH PRUNING PAINT WITHIN 20 MIN TO PREVENT THE SPREAD OF OAK WILT.



ROOT PROTECTION ZONE
THE ROOT PROTECTION ZONE IS A CIRCULAR AREA AROUND A TREE THAT IS BASED ON THE DIAMETER OF THE TREE. EACH 1 INCH DIAMETER OF THE TREE EQUALS 1 FOOT RADIUS FOR ROOT PROTECTION ZONE.



NOTE:

1. THE FENCING SHOWN ABOVE IS DIAGRAMATIC ONLY AND WILL CONFORM TO THE DRIP LINE AND LIMITED TO PROJECT BOUNDARY.
2. FOR ACCEPTABLE FENCING MATERIALS SEE SPECIFICATIONS.

1.1.2

LEVEL I & FENCE PROTECTION

N. T. S.

SIGNIFICANT TREE PRESERVATION LIST									
POINT #	SPECIES	FLOOD PLAIN		ENV SENS AREA		NFP NON EXEMPT		EXEMPT	PRESERVED CANOPY SHADE VALUE (SF)
		REMOVE	PRESERVE	REMOVE	PRESERVE	REMOVE	PRESERVE		
2666	HACKBERRY	0	0	0	0	16	0	0	
2667	HACKBERRY	0	0	0	0	13	0	0	
2668	MESQUITE	0	0	0	0	19	0	0	
2671	MESQUITE	0	0	0	0	0	0	14	
2672	MESQUITE	0	0	0	0	0	0	13	
2673	MESQUITE	0	179	0	0	17	0	0	
2674	MESQUITE	0	0	0	0	10	0	0	
2675	MESQUITE	0	0	0	0	11	0	0	
2676	MESQUITE	0	0	0	0	15	0	0	
2677	MESQUITE	0	0	0	0	13	0	0	
2678	MESQUITE	0	0	0	0	17	0	0	
2679	MESQUITE	0	0	0	0	20	0	0	
2680	MESQUITE	0	0	0	0	10	0	0	
2681	MESQUITE	0	0	0	0	15	0	0	
2682	MESQUITE	0	0	0	0	19	0	0	
2683	MESQUITE	0	0	0	0	19	0	0	
2684	MESQUITE	0	0	0	0	13	0	0	
2685	HACKBERRY	0	0	0	0	12	0	0	628.74
2686	HACKBERRY	0	0	0	0	14	0	0	
2688	MESQUITE	0	0	0	0	14	0	0	461.08
2689	MESQUITE	0	0	0	0	20	0	0	658.68
2690	HACKBERRY	0	0	0	0	0	0	10	
2691	HACKBERRY	0	0	0	0	10	0	0	
2692	HACKBERRY	0	0	0	0	15	0	0	
2693	HACKBERRY	0	0	0	0	12	0	0	
2694	HACKBERRY	0	0	0	0	15	0	0	
2695	HACKBERRY	0	0	0	0	14	0	0	
2696	HACKBERRY	0	0	0	0	16	0	0	
2697	HACKBERRY	0	0	12	0	0	0	0	
2698	HACKBERRY	14	0	0	0	0	0	0	
2699	HACKBERRY	14	0	0	0	0	0	0	
2700	HACKBERRY	0	0	0	0	0	14	0	733.53
2701	MESQUITE	0	0	0	0	0	16	0	526.95
2702	MESQUITE	0	0	0	0	0	19	0	625.75
2703	MESQUITE	0	0	0	0	16	0	0	
2704	MESQUITE	0	0	0	0	15	0	0	
2705	MESQUITE	0	0	0	0	0	11	0	362.28
2707	MESQUITE	0	0	0	0	18	0	0	
2708	MESQUITE	0	0	0	0	12	0	0	
2709	MESQUITE	0	0	0	0	20	0	0	
2710	MESQUITE	0	0	0	0	13	0	0	
2712	MESQUITE	0	0	0	0	0	0	12	
2713	HACKBERRY	0	0	0	0	11	0	0	
2714	MESQUITE	0	0	0	0	0	0	15	
2715	MESQUITE	0	0	0	0	1	0	0	
2716	MESQUITE	0	0	0	0	18	0	0	
2717	MESQUITE	0	0	0	0	22	0	0	
2718	MESQUITE	0	0	0	0	15	0	0	
2719	HACKBERRY	0	0	0	0	0	0	10	
2720	MESQUITE	0	0	0	0	10	0	0	
2721	MESQUITE	0	0	0	0	18	0	0	
2722	HACKBERRY	0	0	0	0	12	0	0	
2723	HACKBERRY	0	0	0	0	16	0	0	
2724	HACKBERRY	0	0	0	0	10	0	0	
2725	HACKBERRY	0	0	0	0	15	0	0	785.93
2726	MESQUITE	0	0	0	0	0	19	0	625.75
2727	MESQUITE	0	0	0	0	0	22	0	724.55
2728	HACKBERRY	0	0	0	0	0	20	0	1047.90
2729	MESQUITE	0	0	0	0	0	11	0	362.28
2730	MESQUITE	0	0	0	0	0	19	0	625.75
2731	MESQUITE	23	0	0	0	0	0	0	
2732	ELM	19	0	0	0	0	0	0	
2733	ELM	13	0	0	0	0	0	0	
2734	MESQUITE	14	0	0	0	0	0	0	
2735	HACKBERRY	11	0	0	0	0	0	0	
2736	HACKBERRY	11	0	0	0	0	0	0	
2737	HACKBERRY	10	0	0	0	0	0	0	
2738	HACKBERRY	0	0	13	0	0	0	0	
2739	HACKBERRY	0	0	12	0	0	0	0	
2740	ELM	10	0	0	0	0	0	0	
2741	MESQUITE	13	0	0	0	0	0	0	
2742	ELM	11	0	0	0	0	0	0	
2743	ELM	12	0	0	0	0	0	0	
2744	ELM	9	0	0	0	0	0	0	
2745	ELM	0	11	0	0	0	0	0	
2748	ELM	0	14	0	0	0	0	0	
2749	ELM	0	13	0	0	0	0	0	
2750	ELM	0	12	0	0	0	0	0	
2751	ELM	0	11	0	0	0	0	0	
2752	ELM	0	18	0	0	0	0	0	
2753	MESQUITE	17	0	0	0	0	0	0	
2754	ELM	0	7	0	0	0	0	0	
2755	ELM	0	18	0	0	0	0	0	
2756	ELM	0	9	0	0	0	0	0	
2757	ELM	0	10	0	0	0	0	0	
2758	MESQUITE	0	13	0	0	0	0	0	
2759	ELM	0	10	0	0	0	0	0	
2760	ELM	0	7	0	0	0	0	0	
2761	ELM	0	10	0	0	0	0	0	
2762	ELM	0	16	0	0	0	0	0	
2763	ELM	0	11	0	0	0	0	0	
2764	MESQUITE	15	0	0	0	0	0	0	
2765	MESQUITE	0	14	0	0	0	0	0	
2766	ELM	0	18	0	0	0	0	0	
2767	ELM	0	15	0	0	0	0	0	
2768	ELM	0	17	0	0	0	0	0	
2769	ELM	0	9	0	0	0	0	0	
2770	ELM	0	15	0	0	0	0	0	
2771	MESQUITE	18	0	0	0	0	0	0	
2772	ELM	9	0	0	0	0	0	0	
2773	ELM	12	0	0	0	0	0	0	

SIGNIFICANT TREE PRESERVATION LIST									
POINT #	SPECIES	FLOOD PLAIN		ENV SENS AREA		NFP NON EXEMPT		EXEMPT	PRESERVED CANOPY SHADE VALUE (SF)
		REMOVE	PRESERVE	REMOVE	PRESERVE	REMOVE	PRESERVE		
2774	ELM	11	0	0	0	0	0	0	
2775	ELM	6	0	0	0	0	0	0	
2776	HUISACHE	0	0	0	0	15	0	0	
2777	MESQUITE	17	0	0	0	0	0	0	
2778	MESQUITE	0	0	0	0	16	0	0	
2779	MESQUITE	0	0	0	0	0	0	16	
2780	MESQUITE	0	0	0	0	14	0	0	
2781	MESQUITE	0	0	0	0	16	0	0	
2782	MESQUITE	0	0	0	0	19	0	0	
2783	MESQUITE	0	0	0	0	18	0	0	
2784	MESQUITE	0	0	0	0	16	0	0	
2785	HACKBERRY	12	12	0	0	0	0	0	
2786	MESQUITE	18	0	0	0	0	0	0	
2787	MESQUITE	0	0	0	0	19	0	0	
2788	MESQUITE	0	0	0	0	0	0	12	
2789	MESQUITE	0	0	0	0	17	0	0	
2790	MESQUITE	0	0	0	0	14	0	0	
2791	HACKBERRY	0	0	0	0	10	0	0	
2793	MESQUITE	0	0	0	0	17	0	0	
2794	MESQUITE	22	0	0	0	0	0	0	
2795	MESQUITE	10	0	0	0	0	0	0	
2796	MESQUITE	20	0	0	0	0	0	0	
2797	ELM	20	0	0	0	0	0	0	
2798	MESQUITE	20	0	0	0	0	0	0	
2799	MESQUITE	0	0	17	0	0	0	0	
2800	MESQUITE	18	0	0	0	0	0	0	
2801	MESQUITE	17	0	0	0	0	0	0	
2802	MESQUITE	21	0	0	0	0	0	0	
2806	ELM	0	21	0	0	0	0	0	
2807	ELM	0	13	0	0	0	0	0	
2808	ELM	12	0	0	0	0	0	0	
2809	ELM	0	18	0	0	0	0	0	
2810	ELM	0	11	0	0	0	0	0	
2811	ELM	0	10	0	0	0	0	0	
2812	ELM	0	23	0	0	0	0	0	
2813	MESQUITE	0	12	0	0	0	0	0	
2815	MESQUITE	0	23	0	0	0	0	0	
2816	ELM	0	20	0	0	0	0	0	
2817	ELM	0	22	0	0	0	0	0	
2818	ELM	0	19	0	0	0	0	0	
2819	MESQUITE	0	20	0	0	0	0	0	
2820	MESQUITE	0	10	0	0	0	0	0	
2821	ELM	0	22	0	0	0	0	0	
2822	MESQUITE	0	17	0	0	0	0	0	
2823	MESQUITE	0	23	0	0	0	0	0	
2824	MESQUITE	0	17	0	0	0	0	0	
2825	ELM	0	20	0	0	0	0	0	
2826	ELM	0	13	0	0	0	0	0	
2827	ELM	0	10	0	0	0	0	0	
2828	MESQUITE	0	11	0	0	0	0	0	
2829	MESQUITE	0	22	0	0	0	0	0	
2830	ELM	0	17	0	0	0	0	0	
2831	ELM	0	14	0	0	0	0	0	
2832	ELM	0	13	0	0	0	0	0	
2833	ELM	0	13	0	0	0	0	0	
2834	ELM	0	13	0	0	0	0	0	
2835	MESQUITE	0	18	0	0	0	0	0	
2836	HACKBERRY	0	12	0	0	0	0	0	
2837	ELM	0	17	0	0	0	0	0	
2838	MESQUITE	0	10	0	0	0	0	0	
2839	MESQUITE	0	12	0	0	0	0	0	
2840	ELM	0	11	0	0	0	0	0	
2841	ELM	0	21	0	0	0	0	0	
2842	ELM	0	19	0	0	0	0	0	
2843	ELM	0	23	0	0	0	0	0	
2844	ELM	0	8	0	0	0	0	0	
2845	MESQUITE	0	13	0	0	0	0	0	
2846	MESQUITE	0	18	0	0	0	0	0	
2847	ELM	0	15	0	0	0	0	0	
2848	ELM	0	16	0	0	0	0	0	
2849	ELM	0	9	0	0	0	0	0	
2850	ELM	0	9	0	0	0	0	0	
2851	ELM	0	7	0	0	0	0	0	
2852	ELM	0	10	0	0	0	0	0	
2853	ELM	0	10	0	0	0	0	0	
2854	MESQUITE	0	12	0	0	0	0	0	
2855	MESQUITE	0	19	0	0	0	0	0	
2856	MESQUITE	0	14	0	0	0	0	0	
2857	ELM	0	13	0	0	0	0	0	
2858	ELM	0	11	0	0	0	0	0	
2859	ELM	0	10	0	0	0	0	0	
2860	ELM	0	16	0	0	0	0	0	
2861	ELM	0	18	0	0	0	0	0	
2862	ELM	0	7	0	0	0	0	0	
2863	ELM	0	13	0	0	0	0	0	
2864	ELM	0	9	0	0	0	0	0	
2865	ELM	0	12	0	0	0	0	0	
2866	ELM	0	12	0	0	0	0	0	
2867	ELM	0	11	0	0	0	0	0	
2868	ELM	0	12	0	0	0	0	0	
2869	ELM	0	11	0	0	0	0	0	
2870	ELM	0	16	0	0	0	0	0	
2871	ELM	0	7	0	0	0	0	0	
2873	ELM	0	14	0	0	0	0	0	
2874	ELM	0	9	0	0	0	0	0	
2875	ELM	0	9	0	0	0	0	0	
2876	ELM	0	17	0	0	0	0	0	
2877	ELM	0	8	0	0	0	0	0	
2878	ELM	0	19	0	0	0	0	0	
2879	ELM	0	16	0	0	0	0	0	
2880	ELM	0	9	0	0	0	0	0	