

Data Source: City of San Antonio Enterprise GIS, Bexar Metro 911, Bexar Appraisal District
 "This Geographic Information System Product, received from The City of San Antonio is provided "as is" without warranty of any kind, and the City of San Antonio expressly disclaims all express and implied warranties, including but not limited to the implied warranties of merchantability and fitness for a particular purpose. The City of San Antonio does not warrant, guarantee, or make any representation regarding the data, or the results of the use of the information provided to you by the City of San Antonio in terms of completeness, accuracy, reliability, timeliness or otherwise. The entire risk as to the results and performance of any information obtained from the City of San Antonio is entirely assumed by the recipient."
 Map Created by: Gustavo Gutierrez
 Map Creation Date: 9/20/2024
 Map File Location: \\common\\misc\\29\\GIS\\Pin50\\plan_1\\b\\Archived\\Neighborhoods\\Land_Use\\Amendments\\Amend_2411600071_IH10E\\Corridor_B&W.mxd
 PDF Filename: 2408GG



200' Notification Area



Proposed Land Use Change



Community Commercial



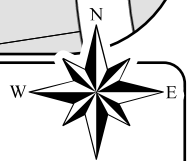
Light Industrial



Low Density Residential



Parks Open Space



0 100 200 Feet

IH-10 E Corridor Perimeter Plan **Proposed Plan Amendment 2411600071 Area**

City of San Antonio
 Development Services
 Department
 Amin Tohmaz, PE, CBO
 City of San Antonio
 Development Services
 Department
 PO Box 819955
 San Antonio, TX 78283