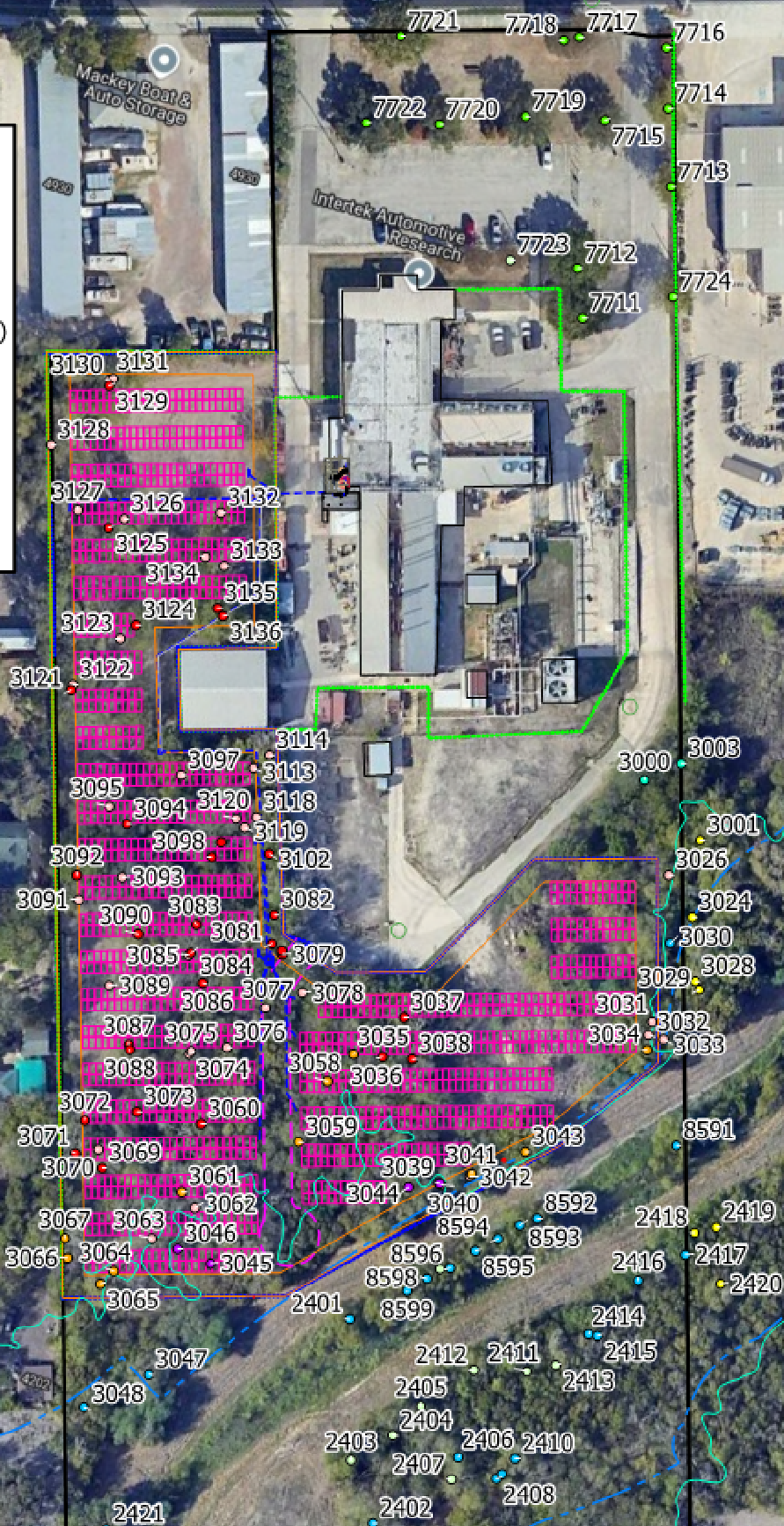


- OFFSITE - PRESERVED (7)
- EXEMPT - PRESERVED (9)
- EXEMPT - REMOVED (35)
- FLOODPLAIN - PRESERVED (23)
- FLOODPLAIN - REMOVED (4)
- ESA BUFFER - PRESERVED (2)
- ESA BUFFER - REMOVED (12)
- UPLANDS - PRESERVED (13)
- UPLANDS - REMOVED (29)



TMS10027 - 4950 Callaghan Tree Preservation Inventory

POINT	SPECIES	DBH	MULTI STEM	CONDITION	DISPOSITION	DESIGNATION	STATUS	OBSERVATIONS AND RECOMMENDATIONS SUMMARY	INDIVIDUAL TREE REPORT WITH PHOTOS
3000	ARIZONA ASH	11		FAIR	PROTECTED - SIGNIFICANT CATEGORY	ESA BUFFER	PRESERVED	Fair overall condition and fair candidate for preservation.	https://fulcrumapp.io/run/c0ad4982-7f24-44ec-https://fulcrumapp.io/run/c0ad4982-7f24-44ec
3001	ARIZONA ASH	15.5		FAIR	PROTECTED - SIGNIFICANT CATEGORY	OFFSITE	PRESERVED	Fair overall condition and fair candidate for preservation.	https://fulcrumapp.io/run/c0ad4982-7f24-44ec-https://fulcrumapp.io/run/c0ad4982-7f24-44ec
3003	HACKBERRY	10		FAIR	PROTECTED - SIGNIFICANT CATEGORY	ESA BUFFER	PRESERVED	Fair overall condition and fair candidate for preservation. Signif	https://fulcrumapp.io/run/c0ad4982-7f24-44ec-https://fulcrumapp.io/run/c0ad4982-7f24-44ec
3024	HACKBERRY	11		VERY POOR	NOT PROTECTED - IN DECLINE/DEAD	OFFSITE	PRESERVED	3024 a 11" hackberry is in very poor overall condition and very	https://fulcrumapp.io/run/c0ad4982-7f24-44ec-https://fulcrumapp.io/run/c0ad4982-7f24-44ec
3026	HACKBERRY	9.5		DEAD	NOT PROTECTED - UNDERSIZED	EXEMPT	REMOVED	UNDERSIZED 3026 a 9.5" hackberry is a dead tree, excessive	https://fulcrumapp.io/run/c0ad4982-7f24-44ec-https://fulcrumapp.io/run/c0ad4982-7f24-44ec
3028	CHINABERRY	11		DEAD	NOT PROTECTED - INVASIVE SPECIES	OFFSITE	PRESERVED	3028 a 11" chinaberry is a dead tree. Tree appears to have bee	https://fulcrumapp.io/run/c0ad4982-7f24-44ec-https://fulcrumapp.io/run/c0ad4982-7f24-44ec
3029	HACKBERRY	10		FAIR	PROTECTED - SIGNIFICANT CATEGORY	OFFSITE	PRESERVED	Fair overall condition and fair candidate for preservation.	https://fulcrumapp.io/run/c0ad4982-7f24-44ec-https://fulcrumapp.io/run/c0ad4982-7f24-44ec
3030	HACKBERRY	10.5		FAIR	PROTECTED - SIGNIFICANT CATEGORY	FLOODPLAIN	PRESERVED	Fair overall condition and fair candidate for preservation.	https://fulcrumapp.io/run/c0ad4982-7f24-44ec-https://fulcrumapp.io/run/c0ad4982-7f24-44ec
3031	CHINABERRY	8		FAIR	NOT PROTECTED - INVASIVE SPECIES	EXEMPT	REMOVED	INVASIVE not protected. Fair overall condition and fair candida	https://fulcrumapp.io/run/c0ad4982-7f24-44ec-https://fulcrumapp.io/run/c0ad4982-7f24-44ec
3032	HACKBERRY	9		FAIR	NOT PROTECTED - UNDERSIZED	EXEMPT	REMOVED	UNDERSIZED not protected. Fair overall condition and fair can	https://fulcrumapp.io/run/c0ad4982-7f24-44ec-https://fulcrumapp.io/run/c0ad4982-7f24-44ec
3033	HACKBERRY	9.5		FAIR	NOT PROTECTED - UNDERSIZED	EXEMPT	REMOVED	UNDERSIZED not protected. Fair overall condition and fair can	https://fulcrumapp.io/run/c0ad4982-7f24-44ec-https://fulcrumapp.io/run/c0ad4982-7f24-44ec
3034	HACKBERRY	10		FAIR	PROTECTED - SIGNIFICANT CATEGORY	ESA BUFFER	REMOVED	Fair overall condition and fair candidate for preservation.	https://fulcrumapp.io/run/c0ad4982-7f24-44ec-https://fulcrumapp.io/run/c0ad4982-7f24-44ec
3035	HACKBERRY	10		FAIR	PROTECTED - SIGNIFICANT CATEGORY	ESA BUFFER	REMOVED	Fair overall condition and fair candidate for preservation.	https://fulcrumapp.io/run/c0ad4982-7f24-44ec-https://fulcrumapp.io/run/c0ad4982-7f24-44ec
3036	HACKBERRY	10		FAIR	PROTECTED - SIGNIFICANT CATEGORY	UPLANDS	REMOVED	Fair overall condition and fair candidate for preservation.	https://fulcrumapp.io/run/c0ad4982-7f24-44ec-https://fulcrumapp.io/run/c0ad4982-7f24-44ec
3037	HACKBERRY	11.5		FAIR	PROTECTED - SIGNIFICANT CATEGORY	UPLANDS	REMOVED	Fair overall condition and fair candidate for preservation.	https://fulcrumapp.io/run/c0ad4982-7f24-44ec-https://fulcrumapp.io/run/c0ad4982-7f24-44ec
3038	HACKBERRY	12.5		FAIR	PROTECTED - SIGNIFICANT CATEGORY	UPLANDS	REMOVED	Fair overall condition and fair candidate for preservation.	https://fulcrumapp.io/run/c0ad4982-7f24-44ec-https://fulcrumapp.io/run/c0ad4982-7f24-44ec
3039	HACKBERRY	10		FAIR	PROTECTED - SIGNIFICANT CATEGORY	FLOODPLAIN	REMOVED	Fair overall condition and fair candidate for preservation.	https://fulcrumapp.io/run/c0ad4982-7f24-44ec-https://fulcrumapp.io/run/c0ad4982-7f24-44ec
3040	CHINABERRY	13		VERY POOR	NOT PROTECTED - INVASIVE SPECIES	EXEMPT	REMOVED	INVASIVE 3040 a 13" chinaberry is in very poor overall conditio	https://fulcrumapp.io/run/c0ad4982-7f24-44ec-https://fulcrumapp.io/run/c0ad4982-7f24-44ec
3041	HACKBERRY	13.5		FAIR	PROTECTED - SIGNIFICANT CATEGORY	ESA BUFFER	REMOVED	Fair overall condition and fair candidate for preservation.	https://fulcrumapp.io/run/c0ad4982-7f24-44ec-https://fulcrumapp.io/run/c0ad4982-7f24-44ec
3042	HUISACHE	18		VERY POOR	NOT PROTECTED - IN DECLINE/DEAD	EXEMPT	REMOVED	3042 a 18" Huisache is in very poor overall condition and very s	https://fulcrumapp.io/run/c0ad4982-7f24-44ec-https://fulcrumapp.io/run/c0ad4982-7f24-44ec
3043	HACKBERRY	11		FAIR	PROTECTED - SIGNIFICANT CATEGORY	ESA BUFFER	REMOVED	Fair overall condition and fair candidate for preservation.	

TMS10027 - 4950 Callaghan Tree Preservation Inventory

POINT	SPECIES	DBH	MULTI STEM	CONDITION	DISPOSITION	DESIGNATION	STATUS	OBSERVATIONS AND RECOMMENDATIONS SUMMARY	INDIVIDUAL TREE REPORT WITH PHOTOS
3114	RED MULBERRY	10		VERY POOR	NOT PROTECTED - IN DECLINE/DEAD	EXEMPT	REMOVED	3114 10" red mulberry is in very poor condition and is a very poor candidate for preservation.	https://fulcrumapp.io/run/c0ad4982-7f24-44ec
3118	HACKBERRY	19.5		POOR	NOT PROTECTED - IN DECLINE/DEAD	EXEMPT	REMOVED	3118 10.5" hackberry is in poor condition and is a poor candidate for preservation.	https://fulcrumapp.io/run/c0ad4982-7f24-44ec
3119	HACKBERRY	12		VERY POOR	NOT PROTECTED - IN DECLINE/DEAD	EXEMPT	REMOVED	3119 12" hackberry is in very poor condition and is a very poor candidate for preservation.	https://fulcrumapp.io/run/c0ad4982-7f24-44ec
3120	RED MULBERRY	10.5		VERY POOR	NOT PROTECTED - IN DECLINE/DEAD	EXEMPT	REMOVED	3120 10.5" red mulberry is in very poor condition and is a very poor candidate for preservation.	https://fulcrumapp.io/run/c0ad4982-7f24-44ec
3121	HACKBERRY	12		FAIR	PROTECTED - SIGNIFICANT CATEGORY	UPLANDS	REMOVED	Fair condition and a fair candidate for preservation. Tree has a low fair candidate for preservation.	https://fulcrumapp.io/run/c0ad4982-7f24-44ec
3122	HACKBERRY	9.5		FAIR	NOT PROTECTED - UNDERSIZED	EXEMPT	REMOVED	Fair condition and a fair candidate for preservation. Tree has a low fair candidate for preservation.	https://fulcrumapp.io/run/c0ad4982-7f24-44ec
3123	CHINABERRY	11		VERY POOR	NOT PROTECTED - INVASIVE SPECIES	EXEMPT	REMOVED	3123 11" china berry is in very poor condition and is a very poor candidate for preservation.	https://fulcrumapp.io/run/c0ad4982-7f24-44ec
3124	HACKBERRY	13.5		FAIR	PROTECTED - SIGNIFICANT CATEGORY	UPLANDS	REMOVED	Low fair condition and a low fair candidate for preservation. High fair candidate for preservation.	https://fulcrumapp.io/run/c0ad4982-7f24-44ec
3125	MESQUITE	14		FAIR	PROTECTED - SIGNIFICANT CATEGORY	UPLANDS	REMOVED	Fair condition and a fair candidate for preservation. Tree has a low fair candidate for preservation.	https://fulcrumapp.io/run/c0ad4982-7f24-44ec
3126	HACKBERRY	11		VERY POOR	NOT PROTECTED - IN DECLINE/DEAD	EXEMPT	REMOVED	3126 11" hackberry is in very poor condition and is a very poor candidate for preservation.	https://fulcrumapp.io/run/c0ad4982-7f24-44ec
3127	HACKBERRY	10.5		VERY POOR	NOT PROTECTED - IN DECLINE/DEAD	EXEMPT	REMOVED	3127 10.5" hackberry is in very poor condition and is a very poor candidate for preservation.	https://fulcrumapp.io/run/c0ad4982-7f24-44ec
3128	HACKBERRY	11.5		POOR	NOT PROTECTED - IN DECLINE/DEAD	EXEMPT	REMOVED	3128 11.5" hackberry is in poor condition and is a poor candidate for preservation.	https://fulcrumapp.io/run/c0ad4982-7f24-44ec
3129	HACKBERRY	10		FAIR	PROTECTED - SIGNIFICANT CATEGORY	UPLANDS	REMOVED	Fair condition and a fair candidate for preservation. Tree has a low fair candidate for preservation.	https://fulcrumapp.io/run/c0ad4982-7f24-44ec
3130	HACKBERRY	17		VERY POOR	NOT PROTECTED - IN DECLINE/DEAD	EXEMPT	REMOVED	3130 17" hackberry is in very poor condition and is a very poor candidate for preservation.	https://fulcrumapp.io/run/c0ad4982-7f24-44ec
3131	HACKBERRY	17		VERY POOR	NOT PROTECTED - IN DECLINE/DEAD	EXEMPT	REMOVED	3131 17" hackberry is in very poor condition and is a very poor candidate for preservation.	https://fulcrumapp.io/run/c0ad4982-7f24-44ec
3132	CHINABERRY	14		VERY POOR	NOT PROTECTED - INVASIVE SPECIES	EXEMPT	REMOVED	3132 14" china berry is in very poor condition and is a very poor candidate for preservation.	https://fulcrumapp.io/run/c0ad4982-7f24-44ec
3133	HACKBERRY	13		VERY POOR	NOT PROTECTED - IN DECLINE/DEAD	EXEMPT	REMOVED	3133 13" hackberry is in very poor condition and is a very poor candidate for preservation.	https://fulcrumapp.io/run/c0ad4982-7f24-44ec
3134	CHINABERRY	17		VERY POOR	NOT PROTECTED - INVASIVE SPECIES	EXEMPT	REMOVED	3134 17" china berry is in very poor condition and is a very poor candidate for preservation.	https://fulcrumapp.io/run/c0ad4982-7f24-44ec
3135	HACKBERRY	11.5		FAIR	PROTECTED - SIGNIFICANT CATEGORY	UPLANDS	REMOVED	Low fair condition and a low fair candidate for preservation. Tree has a low fair candidate for preservation.	https://fulcrumapp.io/run/c0ad4982-7f24-44ec
3136	HACKBERRY	12		FAIR	PROTECTED - SIGNIFICANT CATEGORY	UPLANDS	REMOVED	Low fair condition and a low fair candidate for preservation. Tree has a low fair candidate for preservation.	https://fulcrumapp.io/run/c0ad4982-7f24-44ec
7711	RED OAK	18		FAIR	PROTECTED - SIGNIFICANT CATEGORY	UPLANDS	PRESERVED	Fair overall condition and fair candidate for preservation. Significant fair candidate for preservation.	https://fulcrumapp.io/run/c0ad4982-7f24-44ec
7712	RED OAK	19.5		FAIR	PROTECTED - SIGNIFICANT CATEGORY	UPLANDS	PRESERVED	Fair overall condition and fair candidate for preservation. Significant fair candidate for preservation.	https://fulcrumapp.io/run/c0ad4982-7f24-44ec
7713	HACKBERRY	13.5		FAIR	PROTECTED - SIGNIFICANT CATEGORY	UPLANDS	PRESERVED	Fair overall condition and fair candidate for preservation.	https://fulcrumapp.io/run/c0ad4982-7f24-44ec
7714	HACKBERRY	10		FAIR	PROTECTED - SIGNIFICANT CATEGORY	UPLANDS	PRESERVED	Fair overall condition and fair candidate for preservation.	https://fulcrumapp.io/run/c0ad4982-7f24-44ec
7715	LIVE OAK	18		GOOD	PROTECTED - SIGNIFICANT CATEGORY	UPLANDS	PRESERVED	Good overall condition and good candidate for preservation.	https://fulcrumapp.io/run/c0ad4982-7f24-44ec
7716	CRAPE MYRTLE	7		FAIR	PROTECTED - SIGNIFICANT CATEGORY	UPLANDS	PRESERVED	Fair overall condition and fair candidate for preservation.	https://fulcrumapp.io/run/c0ad4982-7f24-44ec