



**PARKS &
RECREATION**

BEITEL CREEK GREENWAY TRAIL (PERRIN BEITEL TO SALADO CREEK)

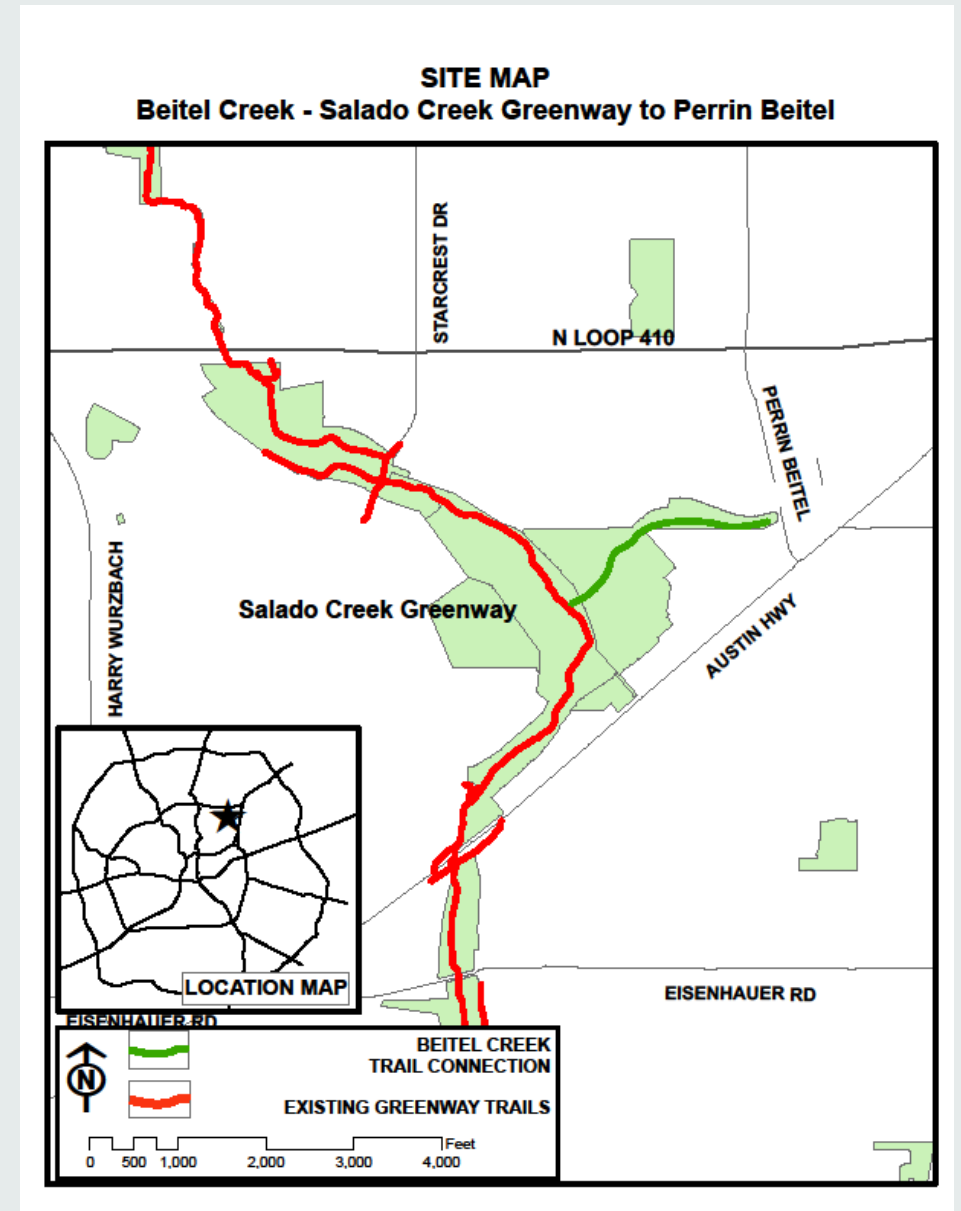
City Council A Session
Agenda Item # 6
February 15, 2024

Homer Garcia III, Director, Parks and Recreation

PROJECT BACKGROUND

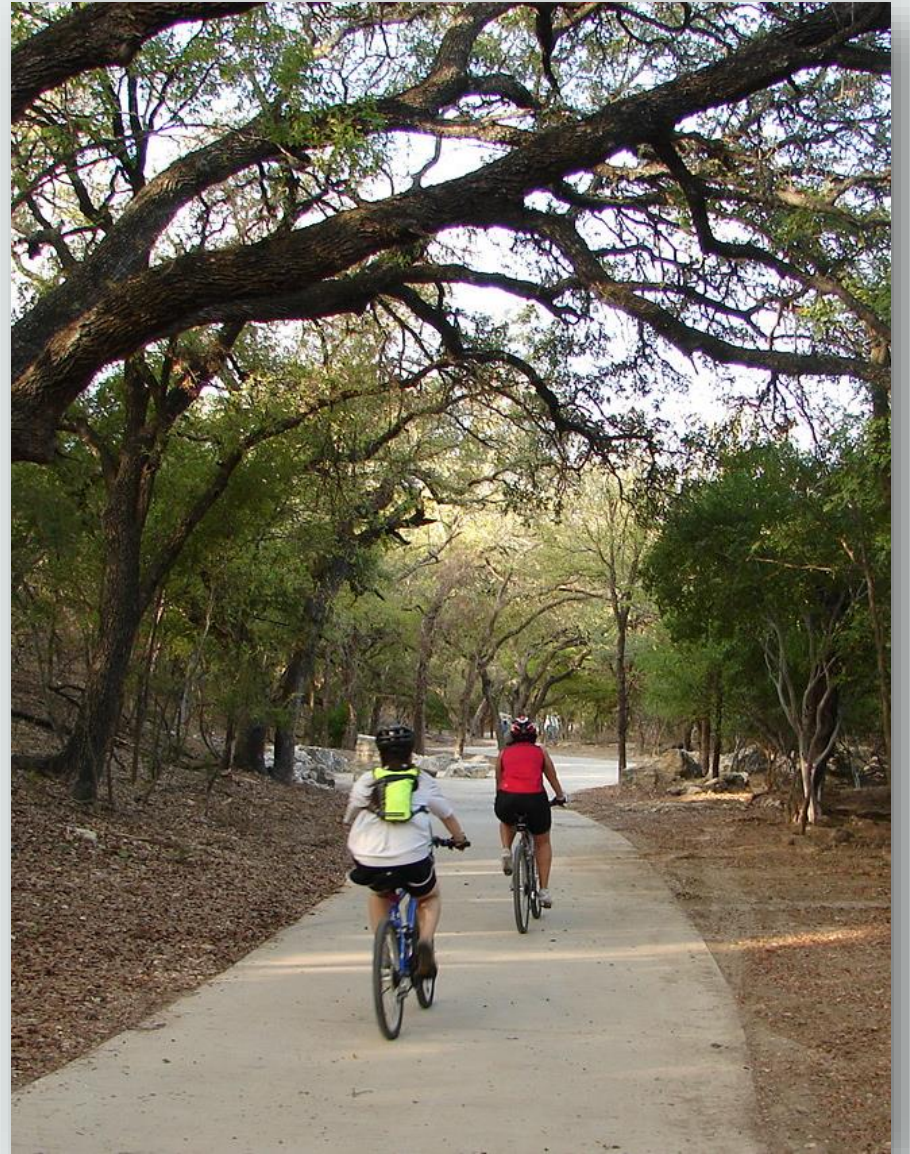
The Beitel Creek project components are:

- .6-mile trail from the corner of Perrin Beitel Road & Briarglen along Beitel Creek to the Salado Creek Greenway just north of Austin Hwy (near the Oakwell Trailhead).
- Low-Impact Development trailhead and parking lot with 12 pervious parking stalls, a bio-swale, and native plantings.
- Various trailhead amenities such as a drinking fountain, signage, landscaping, accessible parking, tree plantings, and irrigation.
- Two pre-fabricated bridges, a low-water crossing, and a section of elevated trail.



ACTION

- **Construction Contract with TCL Construction Enterprises, LLC to construct the Beitel Creek Greenway Trail (Perrin Beitel to Salado Creek)**
- **Total Contract Amount of \$2,158,839.00**
 - **\$1,965,639.00 - Sales Tax Venue**
 - **\$193,200.00 - Tree Mitigation Fund**
- **Low Qualified Bid process**
- **Project Begin Spring 2024**
- **Project Completion Spring 2025**



RECOMMENDATION

- Staff recommends approval

