

LEON CREEK AT MOREY ROAD, SAN ANTONIO, BEXAR COUNTY, TEXAS  
STREAMGAGE INSTALLATION SPECIFICATIONS  
LATITUDE: 29° 23' 34.74" N, LONGITUDE: -98° 36' 9.54" W

GAGE SHELTER:

- The data collection platform/satellite transmitter is housed in a 48" X 31" X 51" jobsite box-type shelter on the left bank near Leon Creek.
- Gage shelter is supported by galvanized angle iron steel legs, concreted.
- Satellite antenna and solar panel are mounted on a 2" aluminum pipe mast attached to the side of the shelter.
- Tipping bucket attached to Gage Shelter.
- Water Sampler at site.

STAGE SENSOR ORIFICE CONDUIT LINE:

- The stage sensor orifice line will be encased in ¾" rigid galvanized conduit beginning at the gage shelter, terminating in creek. Conduit will be trenched and buried.

SAMPLER ORIFICE CONDUIT LINE:

- The sampler sensor orifice line will run parallel to stage sensor orifice line and will be encased in 1" rigid galvanized conduit beginning at the gage shelter, terminating in creek. Conduit will be trenched and buried.

USGS TYPE ENAMEL BREAK-A-WAY STAFF PLATES:

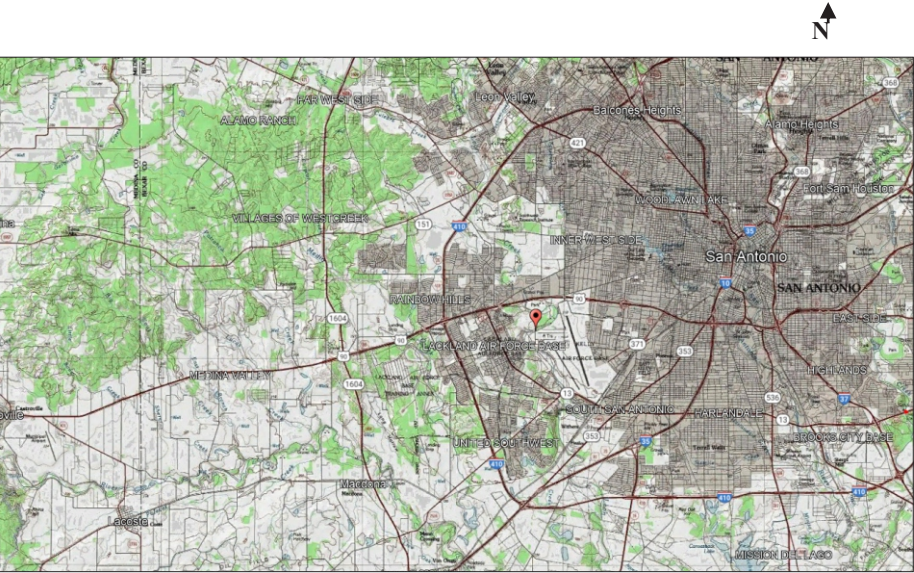
- Multiple USGS enamel type graduated staff plates will be bolted to 6" channel iron with wood backing then concreted and buried near creek to before Gage Shelter.

CREST STAGE GAGE PIPE:

- Crest Stage Gage (CSG) pipes will be attached to 6" galvanized channel iron and placed at multiple locations from creek to before Gage Shelter.

GENERAL NOTES:

- DIGTESS will be conducted by USGS personnel.



Proposed location of Leon Creek at Morey Road,  
San Antonio, Bexar County, Texas



Typical Jobsite Box installation





USGS type enamel break-a-way Staff Plates



Stage Sensor and Sampler conduit lines



Water Sampler

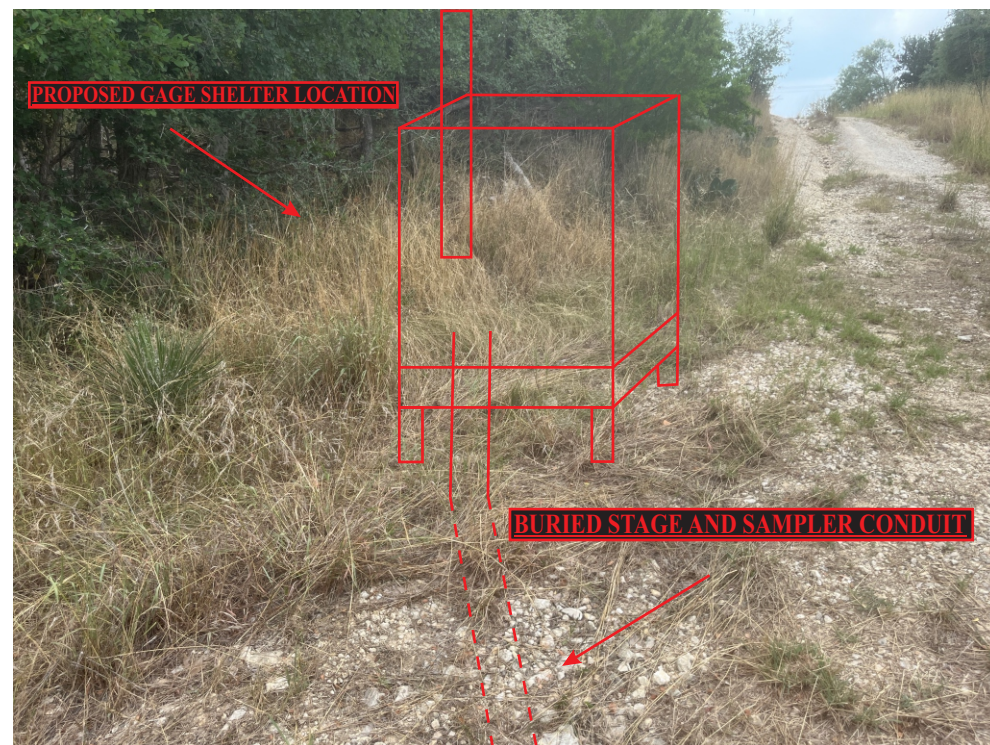


Crest Stage Gage pipe



Gage Shelter stand





Jobsite box and conduit location



One of multiple Staff Plate and CSG pipe installations



Creek installation features