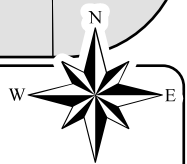


Data Source: City of San Antonio Enterprise GIS, Bexar Metro 911, Bexar Appraisal District  
 "This Geographic Information System Product, received from The City of San Antonio is provided "as is" without warranty of any kind, and the City of San Antonio expressly disclaims all known and implied warranties, including but not limited to the implied warranties of merchantability and fitness for a particular purpose. The City of San Antonio does not warrant, guarantee, or make any representations regarding the use, or the results of the use, of the information provided to you by the City of San Antonio in terms of correctness, accuracy, reliability, timeliness or otherwise. The entire risk as to the results and performance of any information obtained from the City of San Antonio is entirely assumed by the recipient."  
 \*Please contact the responsible City of San Antonio Department for specific determinations.  
 Map Created by: Gustavo Gutierrez  
 Map Creation Date: 9/26/2024  
 Map File Location: \\scomminisc29\GIS\Plan5\plan\_11b\Archived\Neighborhoods  
 Land\_Use\Amendments\Amend\_2411600075\_SouthCentral\_B&W.mxd  
 PDF Filename: 2408GG

- 200' Notification Area
- Mixed Use
- Proposed Land Use Change
- Low Density Residential
- Parks Open Space



# **South Central San Antonio Community Plan** **Proposed Plan Amendment 2411600075 Area**

City of San Antonio  
Development Services  
Department  
Amin Tohmaz, PE, CBO  
CIR Morton Development and  
Business Services Center  
PO Box 839565  
San Antonio, TX 78283

