

7/19/2024 9:42:43 AM Autodesk Docs/23023 - Hemisfair Park MF Mixed-Use - R24/2023 - Hemisfair - R24.rvt  
Copyright © 2024 FitzGerald Associates Architects, Inc. All rights reserved. These plans are not to be reproduced, changed or copied in any form or manner whatsoever, nor are they to be assigned to any third party without first obtaining the written permission of FitzGerald Associates Architects, Inc. These drawings may have been prepared at a site different than the original site. Do not make drawings.



**FitzGerald**  
architecture • interiors • sustainability

CONSULTANT:  
**HITCHCOCK  
DESIGN  
GROUP**  
creating better places  
  
1601 Rio Grande Street Suite 450  
Austin, TX 78701  
T 512.770.4503  
hitchcockdesigngroup.com

23023  
**Hemisfair  
Mixed-Use  
Development**

E Market Street  
San Antonio, TX  
78205

CLIENT:  
**PH Hemisfair LLC**  
11001 Lakeline Blvd.  
Suite 140 Building 2  
Austin, TX 78701



INTERIM REVIEW ONLY  
This document is incomplete and is not  
intended to be used for regulatory approval, bidding,  
permitting or construction purposes.  
Landscape Architect: Bryan Warren  
Texas Registration Number: 2321  
Date: JULY 19, 2024

ISSUED FOR  
SCHEMATIC DESIGN 7/19/24  
# DESCRIPTION DATE

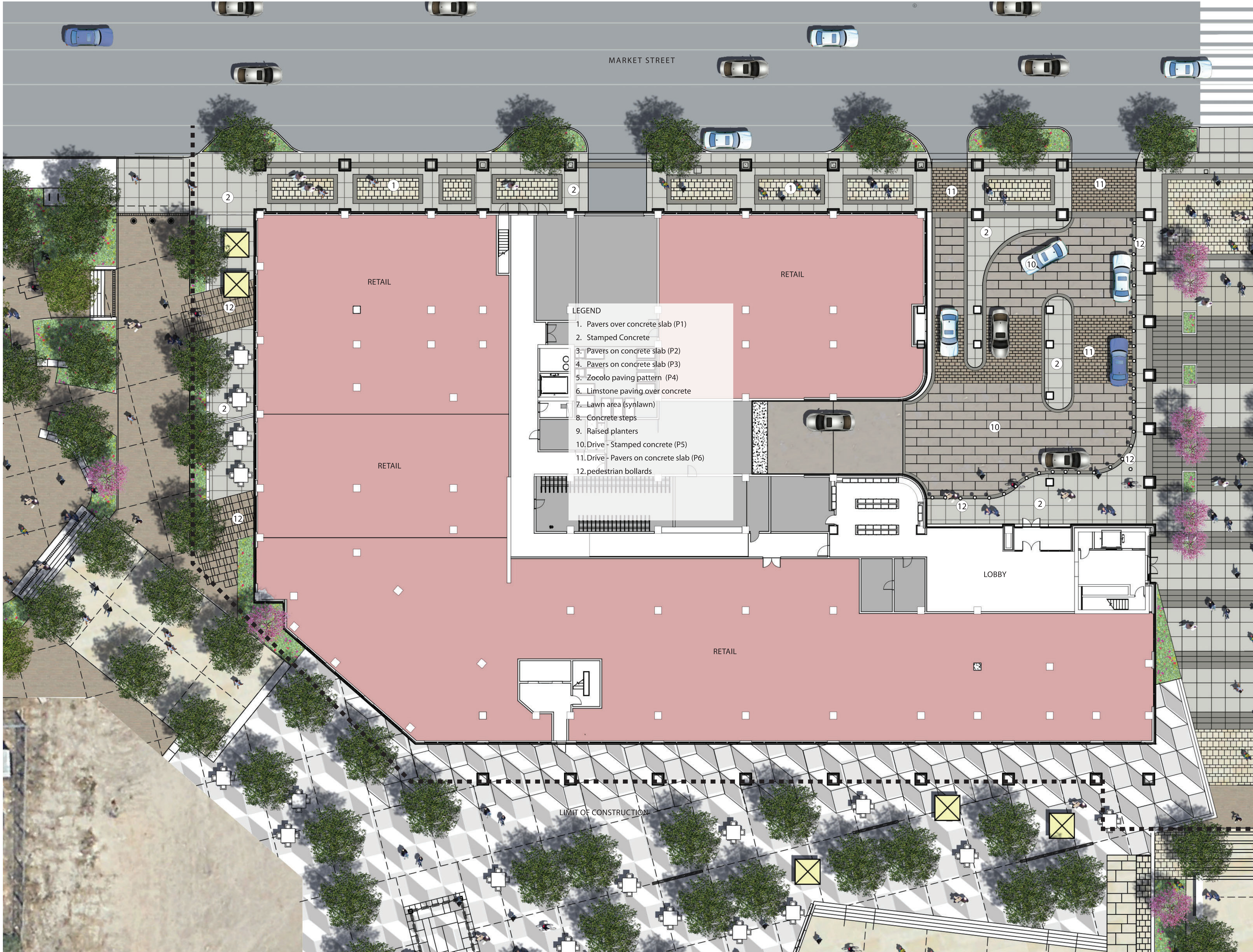
OVERALL  
SITEPLAN

L0-01



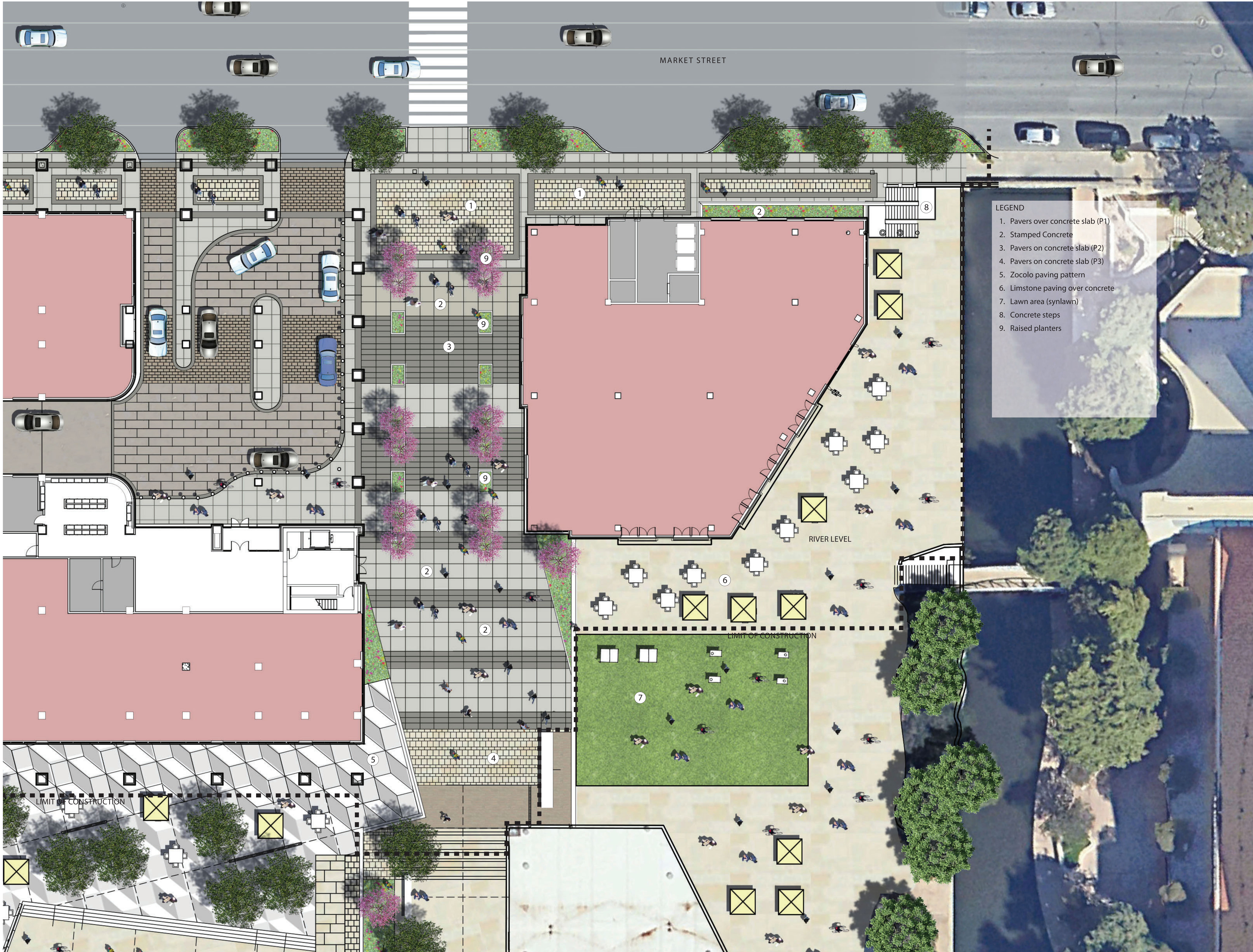
7/19/2024 9:42:43 AM Autodesk Docs/7/20/2024 - Hemisfair Park MF Mixed-Use - R24/2023 - Hemisfair - R24.rvt 7/19/2024 9:42:43 AM

COPYRIGHT: FitzGerald Associates Architects expressly reserves its common law copyright and other property rights in these plans. These plans are not to be reproduced, changed or copied in any form or manner whatsoever, nor are they to be assigned to any third party without first obtaining the expressed written permission and consent of FitzGerald Associates Architects. These drawings may have been reproduced at a date different than originally drawn. Owner and Architect assume no responsibility for use of incorrect scale. DO NOT SCALE DRAWINGS.





7/19/2024 9:42:43 AM Autodesk Docs: 7/20/2024 - Hemisfair Park MF Mixed-Use - R24/2023 - Hemisfair - R24.rvt  
Copyright © 2024 FitzGerald Associates Architects. All rights reserved. These plans are not to be reproduced, changed or copied in any form or manner whatsoever, nor are they to be assigned to any third party without the obtaining the written permission of FitzGerald Associates Architects. These drawings may have been reproduced at a different scale than the original drawing. Other and omitted details to be used at the discretion of the user. Do not make drawings.



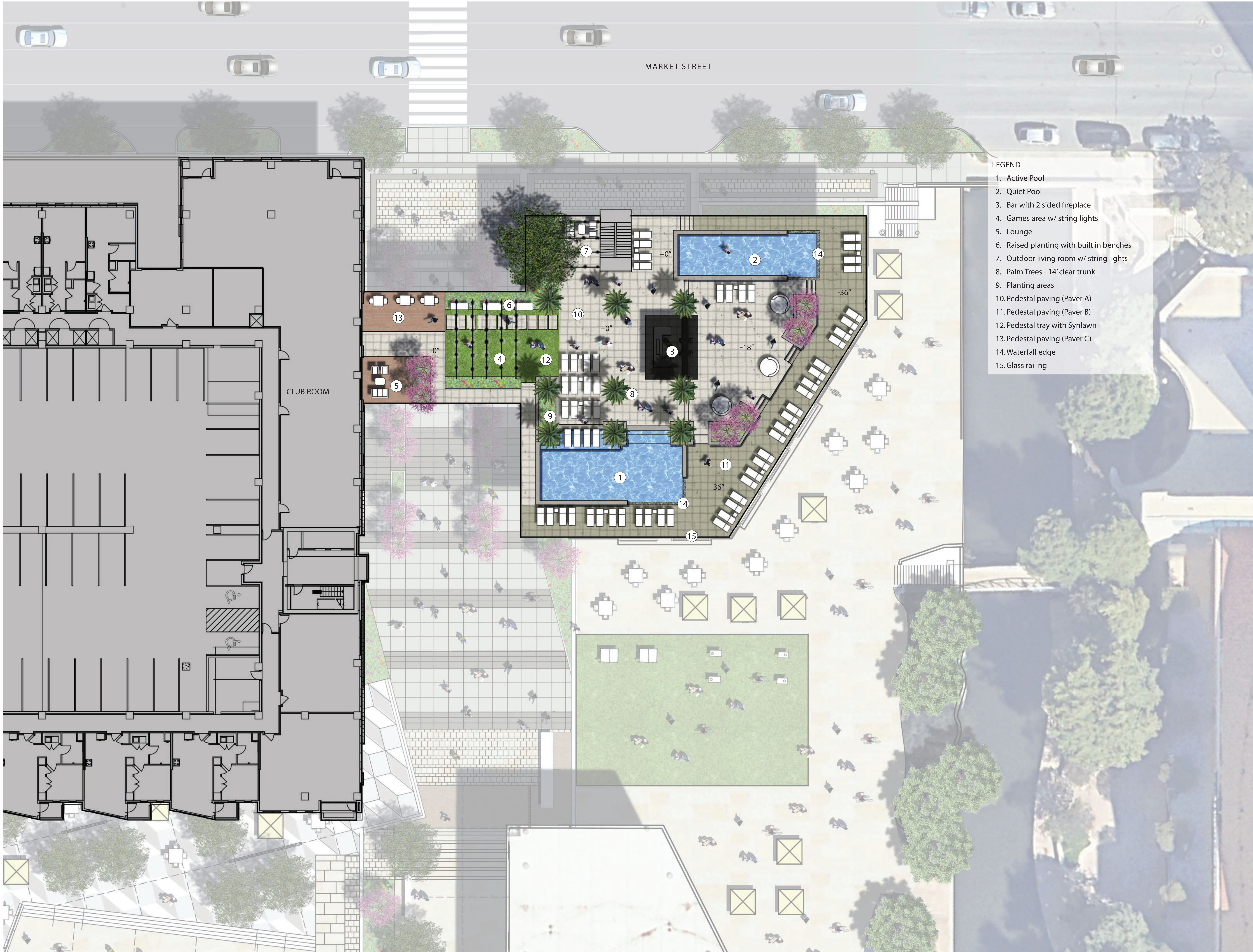
LEGEND

- 1. Pavers over concrete slab (P1)
- 2. Stamped Concrete
- 3. Pavers on concrete slab (P2)
- 4. Pavers on concrete slab (P3)
- 5. Zocolo paving pattern
- 6. Limestone paving over concrete
- 7. Lawn area (synlawn)
- 8. Concrete steps
- 9. Raised planters



7/19/2024 9:42:43 AM Autodesk Docs/7/20/2024 - Hemisfair Park MF Mixed-Use - R24/2023 - HemisFair - R24.rvt

COPYRIGHT: FitzGerald Associates Architects expressly reserves its common law copyright and other property rights in these plans. These plans are not to be reproduced, changed or copied in any form or manner whatsoever, nor are they to be assigned to any third party without first obtaining the expressed written permission and consent of FitzGerald Associates Architects. These drawings may have been reproduced at a date different than originally drawn. Owner and Architect assume no responsibility for use of incorrect data. DO NOT SCALE DRAWINGS.



- LEGEND
- 1. Active Pool
  - 2. Quiet Pool
  - 3. Bar with 2 sided fireplace
  - 4. Games area w/ string lights
  - 5. Lounge
  - 6. Raised planting with built in benches
  - 7. Outdoor living room w/ string lights
  - 8. Palm Trees - 14' clear trunk
  - 9. Planting areas
  - 10. Pedestal paving (Paver A)
  - 11. Pedestal paving (Paver B)
  - 12. Pedestal tray with Synlawn
  - 13. Pedestal paving (Paver C)
  - 14. Waterfall edge
  - 15. Glass railing



