



Edwards Aquifer Protection Program Conservation Easement Acquisition

City Council

December 5, 2024

Parks and Recreation Department

Conservation Easement Acquisition

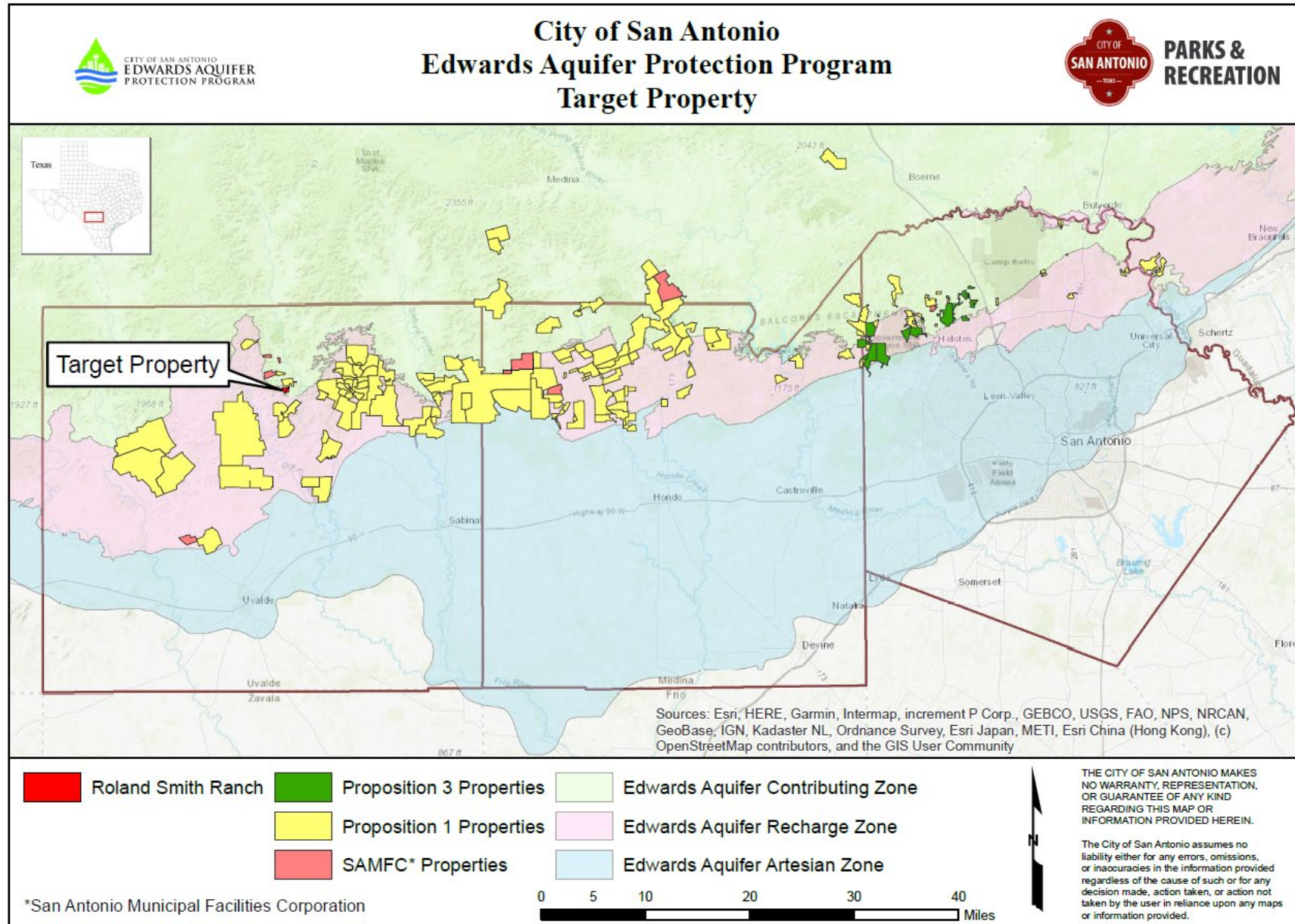
Property	County	Acres	Cost
Roland Smith Ranch	Uvalde	151.14	\$795,210.71

Acquisition Benefits

- Property located over the Edwards Aquifer Recharge and Contributing Zones in Uvalde County
- Important recharge features on property
- High water quantity and high water quality benefits
- Results in increase of 151.14 acres



Total Land Protected = 186,866 acres



Program Status

- 187,343 acres protected with approval of today's proposed acquisitions
- To date, City Council has approved the acquisition of 135 conservation easements and 25 fee simple purchases
- Propositions 1 and 3 sales tax fully expended
- 10-year, \$100M acquisition program approved in 2020 under SAMFC
 - \$30M in debt issued in August 2023 for FY 2023 – 2025 acquisitions
 - \$21.8M committed to date to protect 8,615 acres

Recommendation

- Staff recommends approval