

Data Source: City of San Antonio Enterprise GIS, Bexar Metro 911, Bexar Appraisal District
 "This Geographic Information System Product, received from The City of San Antonio is provided 'as is' without warranty of any kind, and the City of San Antonio expressly disclaims all express and implied warranties, including but not limited to the implied warranties of merchantability and fitness for a particular purpose. The City of San Antonio does not warrant, guarantee, or make any representations regarding the use, or the results of the use, of the information provided to you by the City of San Antonio in terms of correctness, accuracy, reliability, timeliness or otherwise. The entire risk as to the results and performance of any information obtained from the City of San Antonio is entirely assumed by the recipient."

Map Created by: Gustavo Gutierrez
 Map Creation Date: 7/26/2024
 Map File Location: \\fscommon\\misc29\\GIS\\Pin50\\plan_lib\\Archived\\Neighborhoods
 Land_Use\\Amendments\\Amend_2411600041_PortSan Antonio_B&W.mxd
 PDF Filename: PlanA 2024-11600051.pdf



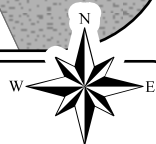
200' Notification Area

Proposed Land Use Change



Low Density Residential

Urban Mixed Use



0 125 250 Feet

City of San Antonio
 Development Services
 Department
 Michael Shannon, PE, CBO
 City Motion Development and
 Business Services Center
 PO Box 639988
 San Antonio, TX 78263



Port San Antonio Area Regional
 Center

Proposed Plan Amendment 2411600051 Area