

Data Source: City of San Antonio Enterprise GIS, Bexar Metro 911, Bexar Appraisal District
 "This Geographic Information System Product, received from The City of San Antonio is provided "as is" without warranty of any kind, and the City of San Antonio expressly disclaims all known and implied warranties, including but not limited to the implied warranties of merchantability and fitness for a particular purpose. The City of San Antonio does not warrant, guarantee, or make any representations regarding the use, or the results of the use, of the information provided to you by the City of San Antonio in terms of correctness, accuracy, reliability, timeliness or otherwise. The entire risk as to the results and performance of any information obtained from the City of San Antonio is entirely assumed by the recipient."

Map Created by: Gustavo Gutierrez
 Map Creation Date: 1/24/2025
 Map File Location: \\scomonimisc29\GIS\Plan50\plan_11b\Archived\Neighborhoods
 Land_Use\Amendments\Amend_2511600004_EasternTriangle\SW.mxd
 PDF Filename: 25010G



200' Notification Area



Proposed Land Use Change



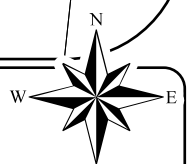
Low Density Residential



Community Commercial



Neighborhood Commercial



0 50 100 Feet

Eastern Triangle Community Plan **Proposed Plan Amendment 2511600004 Area**

City of San Antonio
 Development Services
 Department

Amin Tohmaz, PE, CBO

CRF Morton Development and
 Business Services Center
 PO Box 859555
 San Antonio, TX 78283