

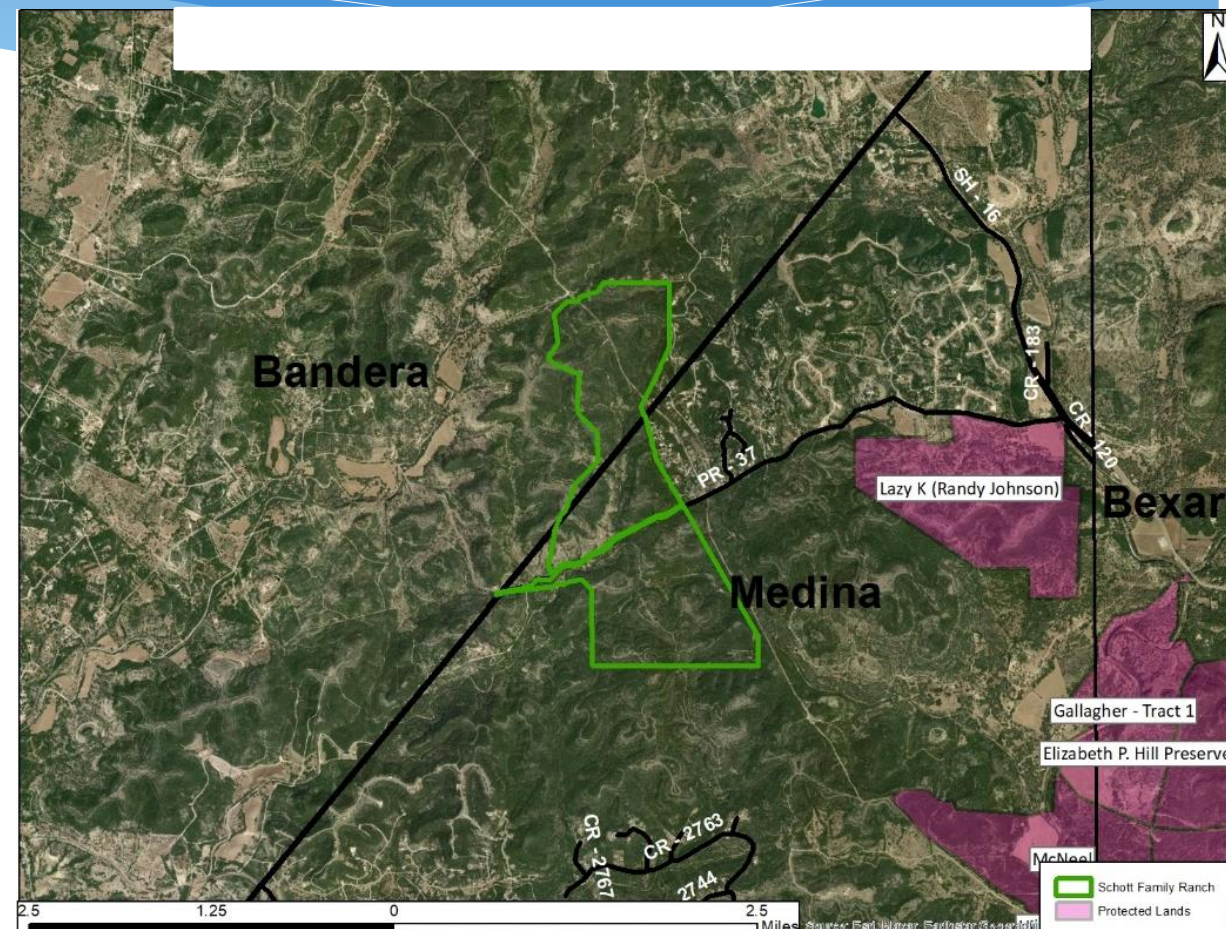
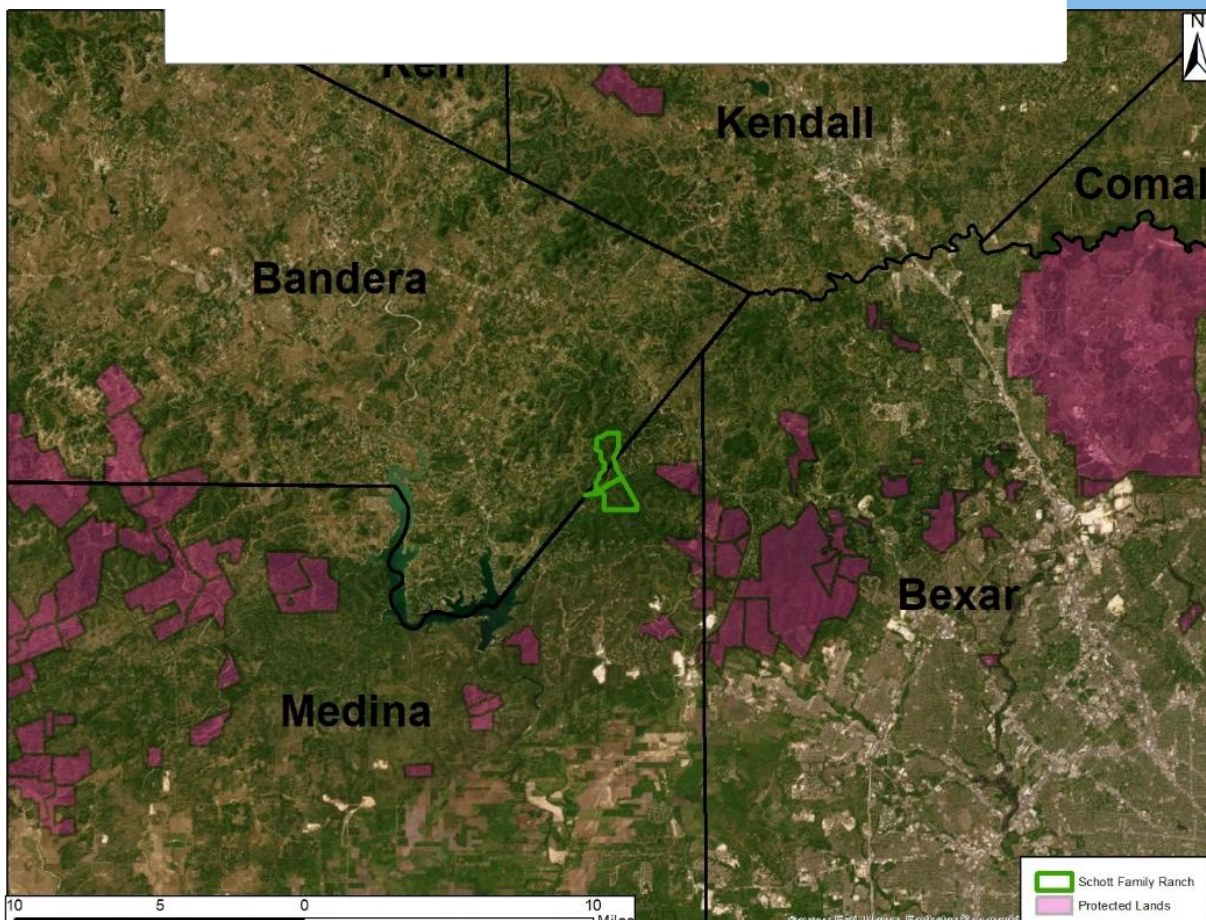


City of San Antonio

Edwards Aquifer Protection Program

Cherry Springs Ranch

Cherry Springs Ranch (~2,024 acres) Bandera/Medina County



Cherry Springs Ranch (~2,024 acres) Bandera/Medina County

- 100% EACZ
- Top 20% SET Model
- Located on Park Road 37 west of Government Canyon SNA and east of Medina Lake in the rapidly developing City of San Antonio ETJ
- EAA completed geological assessment; Ranked high for water quality and quantity benefits
- TNC and EAPP pursuing prequalification to apply for Camp Bullis Sentinel Landscape RCPP funding
 - If eligible, will seek funding for Phase I CE acquisition (acreage TBD)

➤ **Briefing Item Only**



Cherry Springs Ranch (~2,024 acres) Bandera/Medina County



Cherry Springs Ranch (~2,024 acres) Bandera/Medina County

