











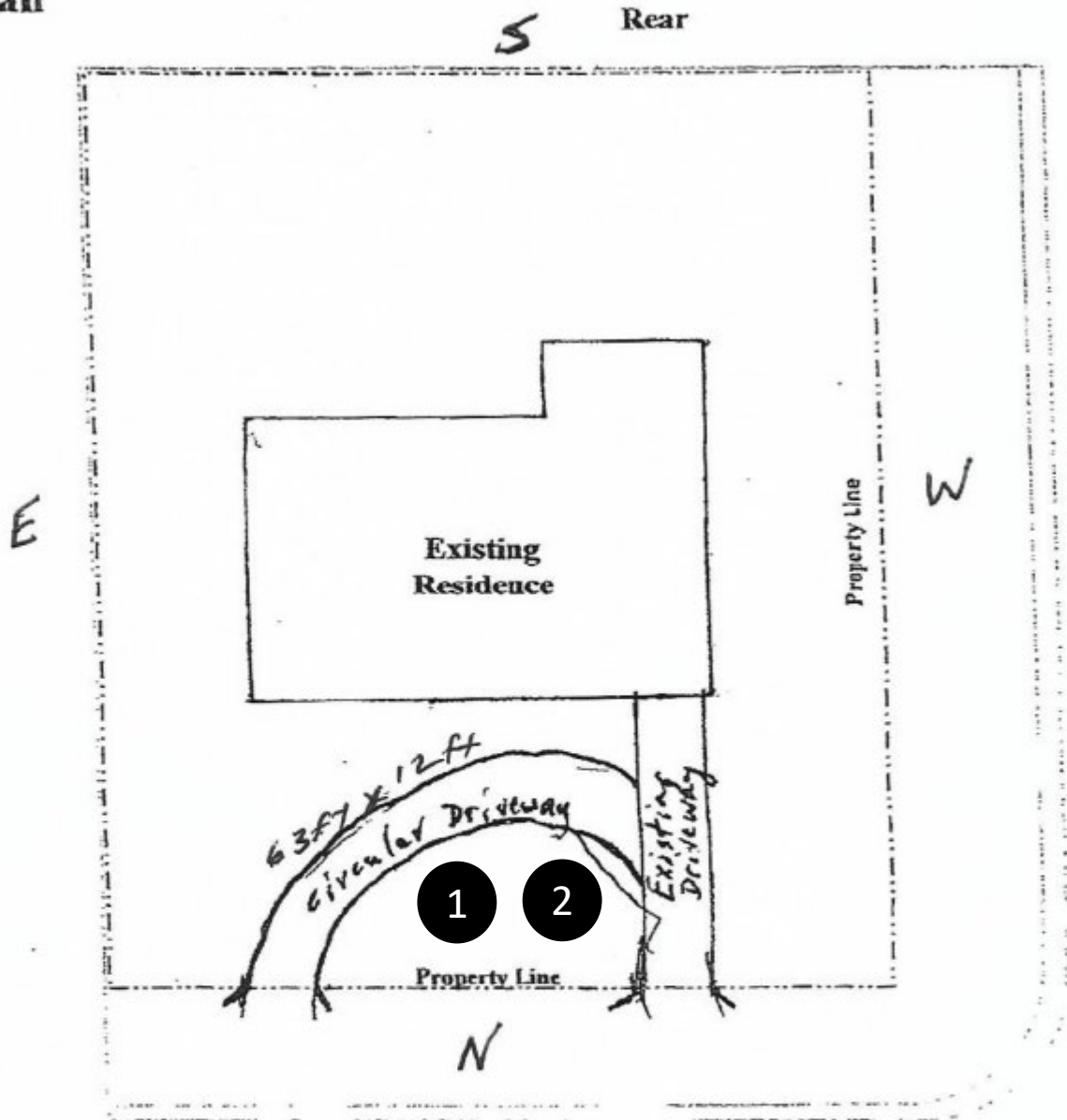





"NOT TO SCALE,
FOR ILLUSTRATIVE PURPOSES ONLY"

Development Services Department
City of San Antonio

Site Plan



Street Name: Babcock

Circular Driveway
Dimensions
63ft x 12ft

Front

1) a driveway configuration variance from the NCD-7 driveway configuration standards to allow a circular driveway, and 2) a driveway variance from the driveway requirements to allow two driveways on a single-family detached residential lot that is fronting a collector or major thoroughfare.

JEFFERSON

Neighborhood Conservation District



APRIL, 2009



For corner lots: If a curb cut is located on the primary street, corner lot driveways must also comply with the driveway requirements of this document. If the driveway curb cut is located solely on the secondary or side street, a standard UDC driveway and curb cut configuration is allowed.

For residential lots without a primary street curb cut or driveway: Prior to permitting additional curb cuts, all existing vehicle access ways (alleys, side access points, etc.) shall comply with the driveway standards of this document.

Circular drives and driveways with ingress/egress onto one or more streets are prohibited.

Driveway materials may include concrete, and/or brick and similar pavers. Gravel or similar material is permitted, but must be contained by an impervious curb or border.

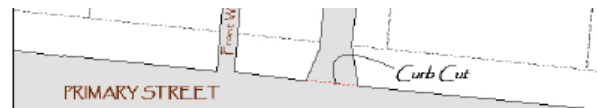


Illustration of a typical lot layout



Common front walk and driveway configuration

BOA-24-10300225

354 Babcock Road



Subject Property



BOA-24-10300225

Subject Property



Subject Property



BOA-24-10300225

Surrounding Area



Surrounding Area



BOA-24-10300225

Surrounding Area



Surrounding Area

