



Edwards Aquifer Protection Program Conservation Easement Acquisition

City Council

June 20, 2024

Parks and Recreation Department

Conservation Easement Acquisition

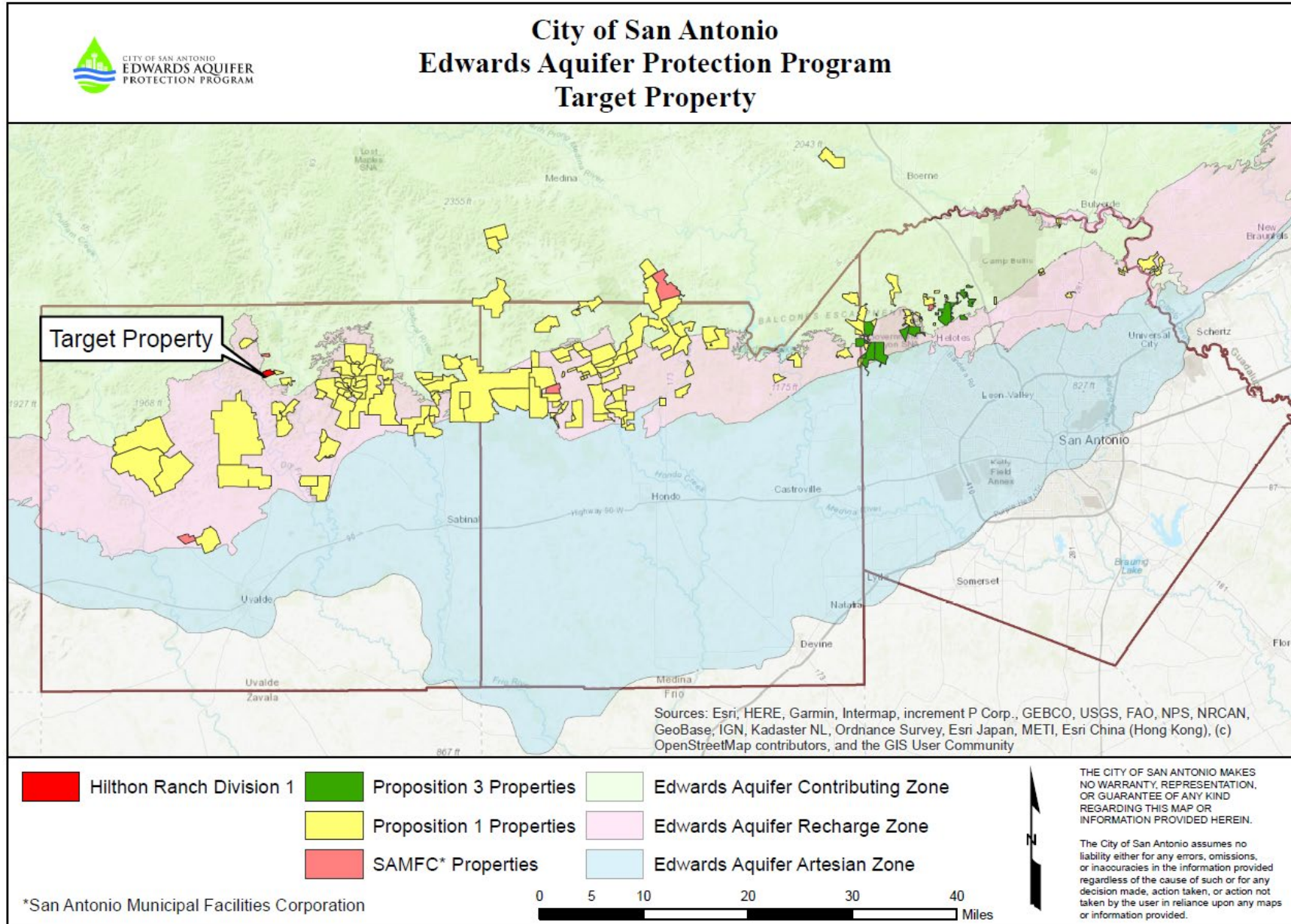
Property	County	Acres	Cost
Hilthon Ranch Division 1	Uvalde	346.71	\$876,996.19

Acquisition Benefits

- Property located over the Edwards Aquifer Contributing Zone in Uvalde County
- Important recharge features on property
- High water quantity and high water quality benefits
- Results in increase of 346.71 acres



Total Land Protected = 182,334 acres



Program Status

- 182,681 acres protected with approval of today's proposed acquisitions
- To date, City Council has approved the acquisition of 129 conservation easements and 24 fee simple purchases
- Propositions 1 and 3 sales tax fully expended for acquisition activities
- 10-year, \$100M acquisition program approved in 2020 under SAMFC
 - \$30M in debt issued in August 2023 for FY 2023 – 2025 acquisitions
 - \$9.7M expended to date to protect 3,971 acres

Recommendation

- Staff recommends approval