

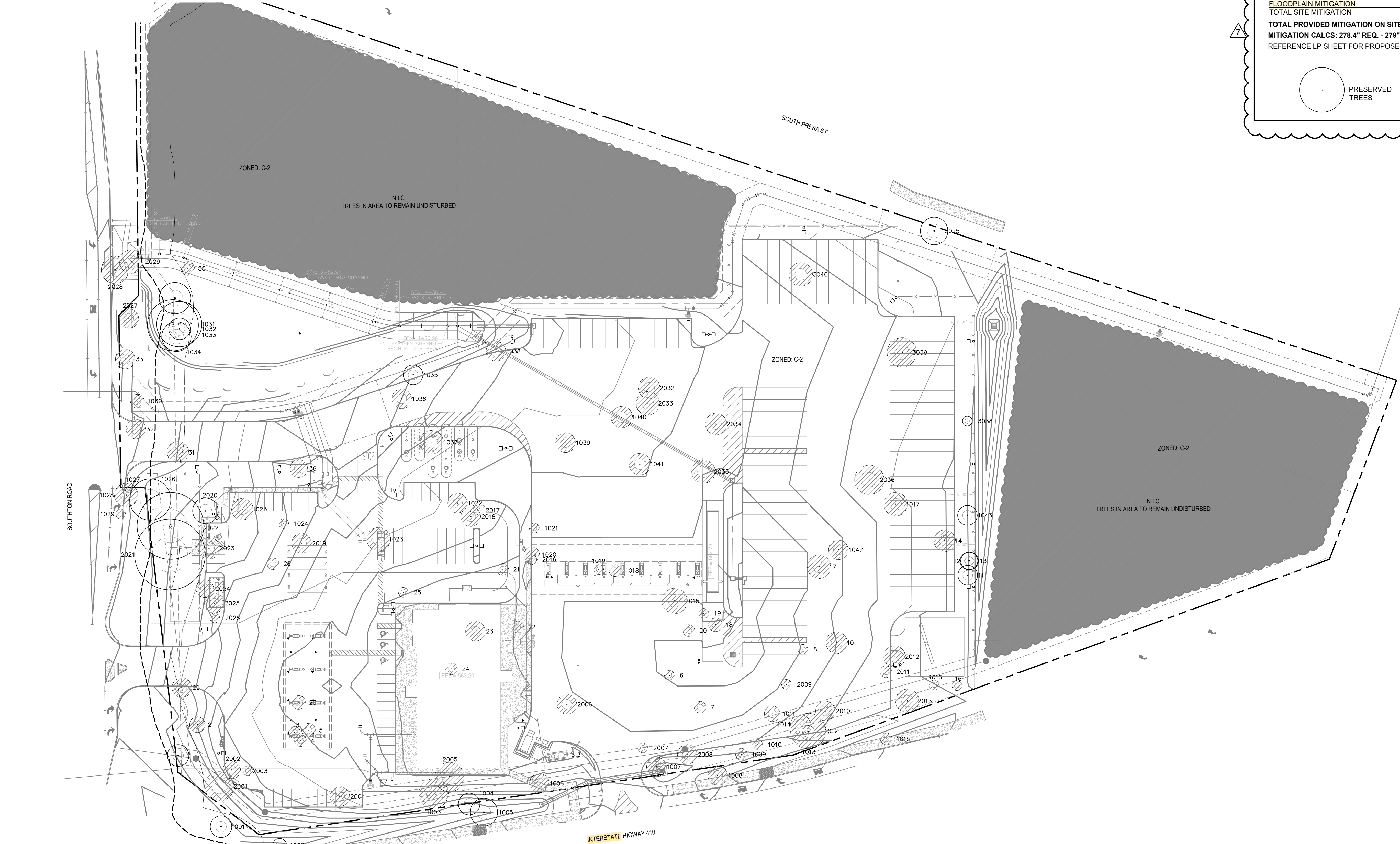
TREE CANOPY ORDINANCE			
TOTAL SITE AREA W/ FLOODPLAIN: 459,060 SF. SITE AREA MINUS FLOODPLAIN 450,123 SF			
SITE AREA = 450,123 SF X 25% = 112,531 SF TREE CANOPY REQUIRED			
EXISTING TREES:	(4) LIVE OAK - 875 SF @ 100%	3,500 SF	
	(4) HACKBERRY - 875 SF @ 100%	3,500 SF	
	(2) MESQUITE - 550 SF @ 100%	550 SF	
	(1) PERSIMMON - 275 SF @ 100%	275 SF	
	(1) CONDALIA - 275 SF @ 100%	275 SF	
PROPOSED TREES: REF. LANDSCAPE SHEET LP 1.1 FOR LOCATIONS			
	(29) MONTERREY OAK - 875 SF @ 90%	22,838 SF	
	(33) BURR OAK - 1200 SF @ 90%	35,640 SF	
	(33) SHUMARD RED OAK - 1200 SF @ 90%	35,640 SF	
	(32) MEXICAN SYCAMORE - 1200 SF @ 90%	34,560 SF	
TOTAL TREE CANOPY COVERAGE		137,603 SF (30%)	

TREE PRESERVATION - E.S.A.			
TREE PRESERVATION: (Tree Survey Method)			
<b>TREES SURVEYED</b>			
UNDERSTORY SPECIES: 0 TOTAL INCHES X 80% REQ. PRES.		0 INCH (100%)	
REQUIRED UNDERSTORY MITIGATION:		<b>0" REQ. MITIGATION</b>	
SIGNIFICANT TREE: 87 TOTAL INCHES X 80% REQ. PRESERVED:		69.6 INCH. (80%)	
SIGNIFICANT TREE INCH. PRESERVED:		76 INCH. (87%)	
REQUIRED SIGNIFICANT MITIGATION:		<b>0" REQ. MITIGATION</b>	
HERITAGE TREE: 96 TOTAL INCHES X 100% REQ. PRESERVED :		96 INCH. (100%)	
HERITAGE TREE INCH. REMOVED:		0 INCH.	
REQUIRED HERITAGE MITIGATION:		<b>0" REQ. MITIGATION</b>	
TOTAL REQUIRED MITIGATION =		<b>0 INCHES REQUIRED</b>	

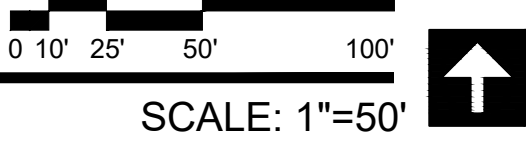
TREE PRESERVATION - FLOODPLAIN			
TREE PRESERVATION: (Tree Survey Method)			
<b>TREES SURVEYED</b>			
UNDERSTORY SPECIES: 0 TOTAL INCHES X 80% REQ. PRES.		0 INCH (100%)	
REQUIRED UNDERSTORY MITIGATION:		<b>0" REQ. MITIGATION</b>	
SIGNIFICANT TREE: 58 TOTAL INCHES X 80% REQ. PRESERVED:		46.4 INCH. (80%)	
SIGNIFICANT TREE INCH. PRESERVED:		21 INCH. (36%)	
REQUIRED SIGNIFICANT MITIGATION:		<b>25.4" REQ. MITIGATION</b>	
HERITAGE TREE: 0 TOTAL INCHES X 100% REQ. PRESERVED :		0 INCH. (100%)	
HERITAGE TREE INCH. PRESERVED:		0 INCH. (100%)	
REQUIRED HERITAGE MITIGATION:		<b>0" REQ. MITIGATION</b>	
TOTAL REQUIRED MITIGATION =		<b>25.4 INCHES REQUIRED</b>	

TREE PRESERVATION - UPLAND			
TREE PRESERVATION: (Tree Survey Method)			
<b>TREES SURVEYED</b>			
UNDERSTORY SPECIES: 152 TOTAL INCHES X 40% REQ. PRES.		60.8 INCH (40%)	
REQUIRED UNDERSTORY MITIGATION:		<b>5 INCH (3%)</b>	
SIGNIFICANT TREE: 628 TOTAL INCHES X 40% REQ. PRESERVED:		251.2 INCH. (40%)	
SIGNIFICANT TREE INCH. PRESERVED:		54 INCH. (9%)	
REQUIRED SIGNIFICANT MITIGATION:		<b>197" REQ. MITIGATION</b>	
HERITAGE TREE: 0 TOTAL INCHES X 100% REQ. PRESERVED :		0 INCH. (100%)	
REQUIRED HERITAGE MITIGATION:		<b>0" REQ. MITIGATION</b>	
TOTAL REQUIRED MITIGATION =		<b>253 INCHES REQUIRED</b>	

TREE MITIGATION			
UPLAND MITIGATION			
ESA MITIGATION		253 INCHES	
FLOODPLAIN MITIGATION		0 INCHES	
TOTAL SITE MITIGATION		25.4 INCHES	
TOTAL PROVIDED MITIGATION ON SITE:		279" PROPOSED	
MITIGATION CALCS: 278.4" REQ. - 279" PROP. =		0" REMAINING	
REFERENCE LP SHEET FOR PROPOSED TREES AND DETAIL LANDSCAPE CALCULATIONS			
		PRESERVED TREES	
		REMOVED TREES	



# TREE PRESERVATION PLAN



201 GROVETON | SATX 78210  
210.314.5582 | MPSTUD.IO



03-25-2024

## PROJECT

## LOVES S PRESA ST

**PROJECT ADDRESS**  
9530 SOUTHTON RD  
SAN ANTONIO, TX 78223

**OWNER | CLIENT**  
**LOVES**  
10601 N PENNSYLVANIA AVE  
OKLAHOMA CITY, OK

**OWNER'S REPRESENTATIVE**  
**BRAD PECK**  
295.475.5803  
Brad.Peck@loves.com

## SUBCONSULTANT

## ISSUE SETS

NO.	DATE	DESCRIPTION
1	10.23.23	ADDENDUM #1
4	12.12.23	ADDENDUM #4
5	12.19.23	ADDENDUM #5
6	03.08.24	CITY COMMENTS
7	03.25.24	CITY COMMENTS

## SHEET INFORMATION

### PROJECT NO.

23034

### DATE ISSUED

MARCH 25, 2024

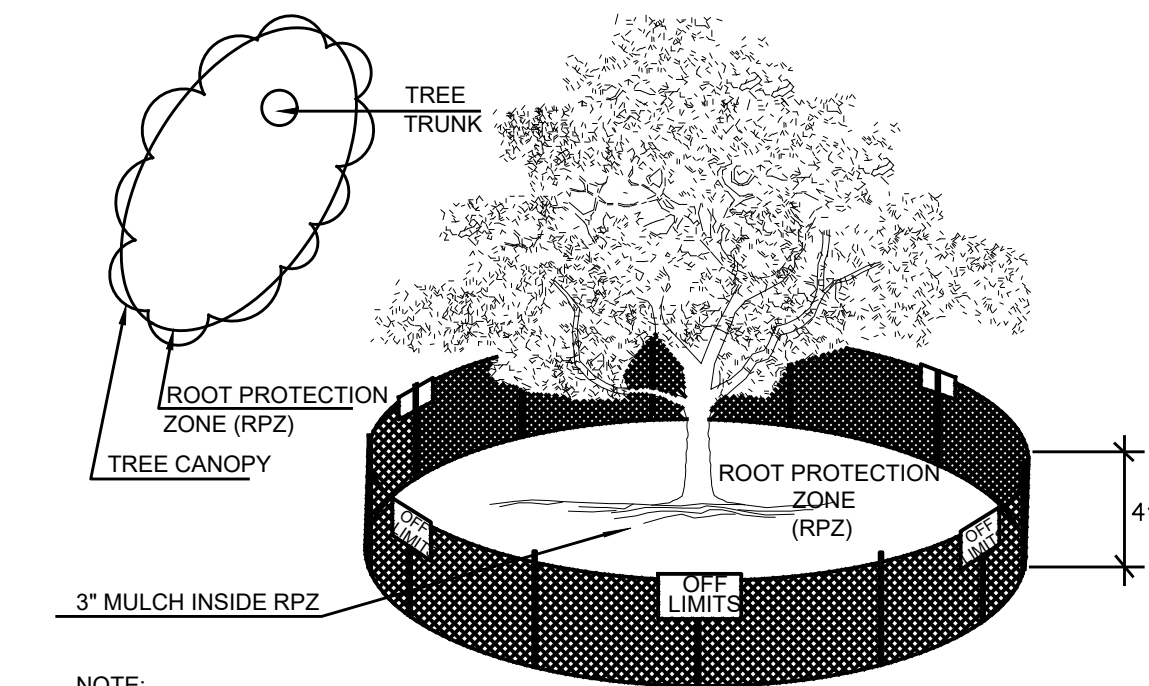
### SHEET NAME

## TREE PRESERVATION PLAN

### SHEET NUMBER

TP 1.1

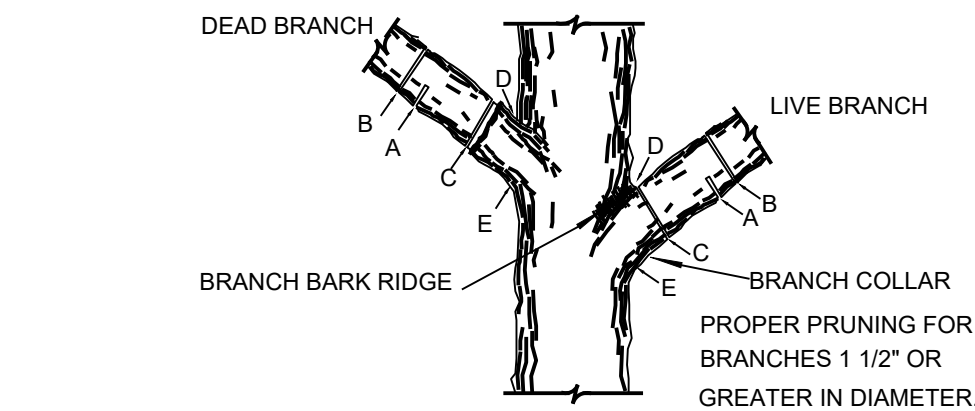




NOTE:  
1. THE FENCING SHOWN ABOVE IS DIAGRAMATIC ONLY AND WILL CONFORM TO THE DRIP LINE AND LIMITED TO PROJECT BOUNDARY.  
2. ACCEPTABLE FENCING MATERIALS INCLUDE: 4 FT HEIGHT ORANGE SAFETY FENCE WITH T-POST SUPPORTS.  
REFERENCE SPECIFICATIONS.

## 1 EXISTING I-A TREE PROTECTION

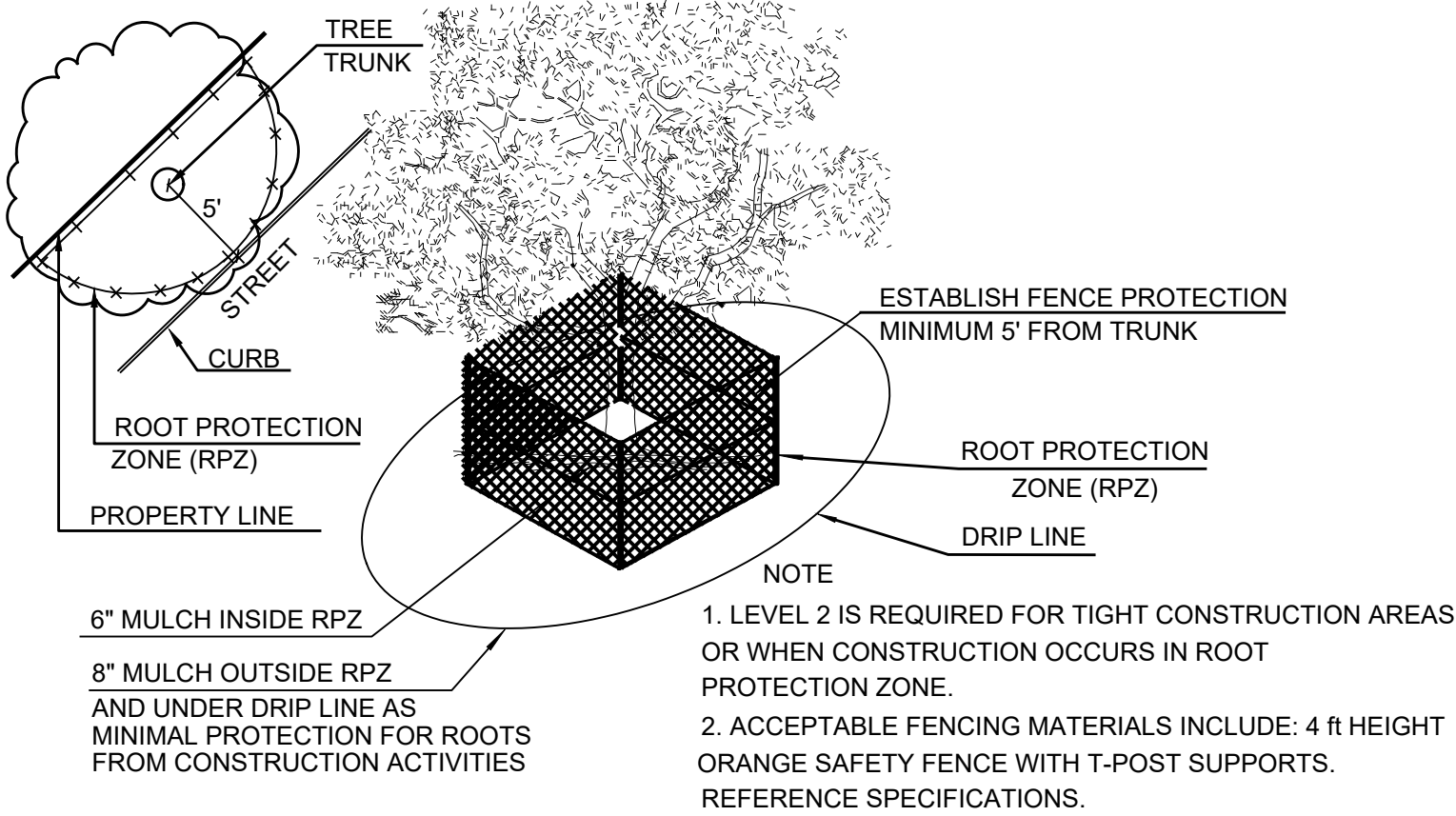
ELEVATION - PLAN - 3D VIEW NOT TO SCALE



NOTE: DO NOT CUT FROM D TO E.  
A. FIRST CUT - TO PREVENT THE BARK FROM BEING PEELED WHEN THE BRANCH FALLS.  
B. SECOND CUT - TO REDUCE THE WEIGHT OF BRANCH.  
C. FINAL CUT - ALLOW FOR HEALING COLLAR BUT NO STUBS  
D. BRANCH RIDGES - INDENT PROPERLY BRANCH RIDGES WHICH ARE SITE FOR DECAY.  
FOR OAKS ONLY: PAINT ALL WOUNDS OR CUTS WITH PRUNING PAINT WITHIN 20 MIN TO PREVENT THE SPREAD OF OAK WILT.

## 2 TREE BRANCH PRUNING

ELEVATION NOT TO SCALE

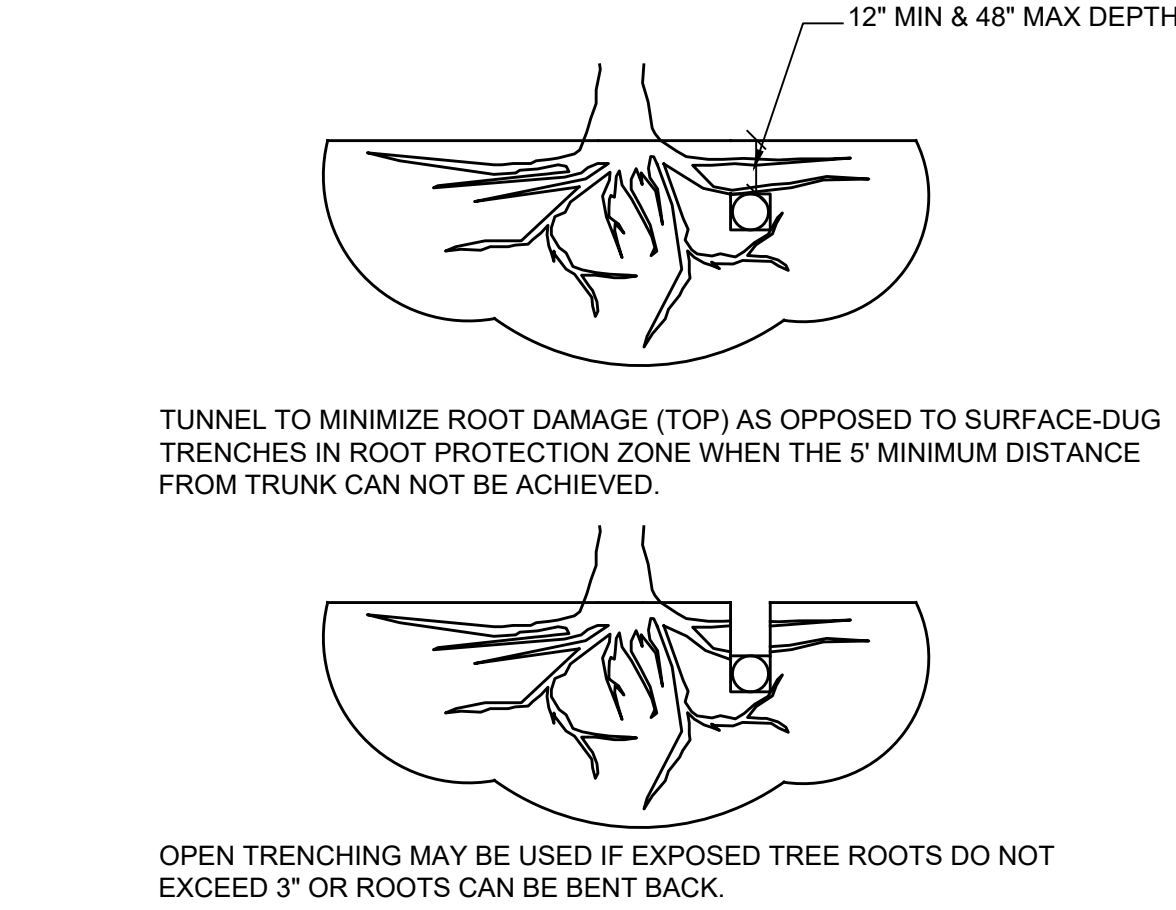


## 3 LEVEL II A TREE PROTECTION

ELEVATION NOT TO SCALE

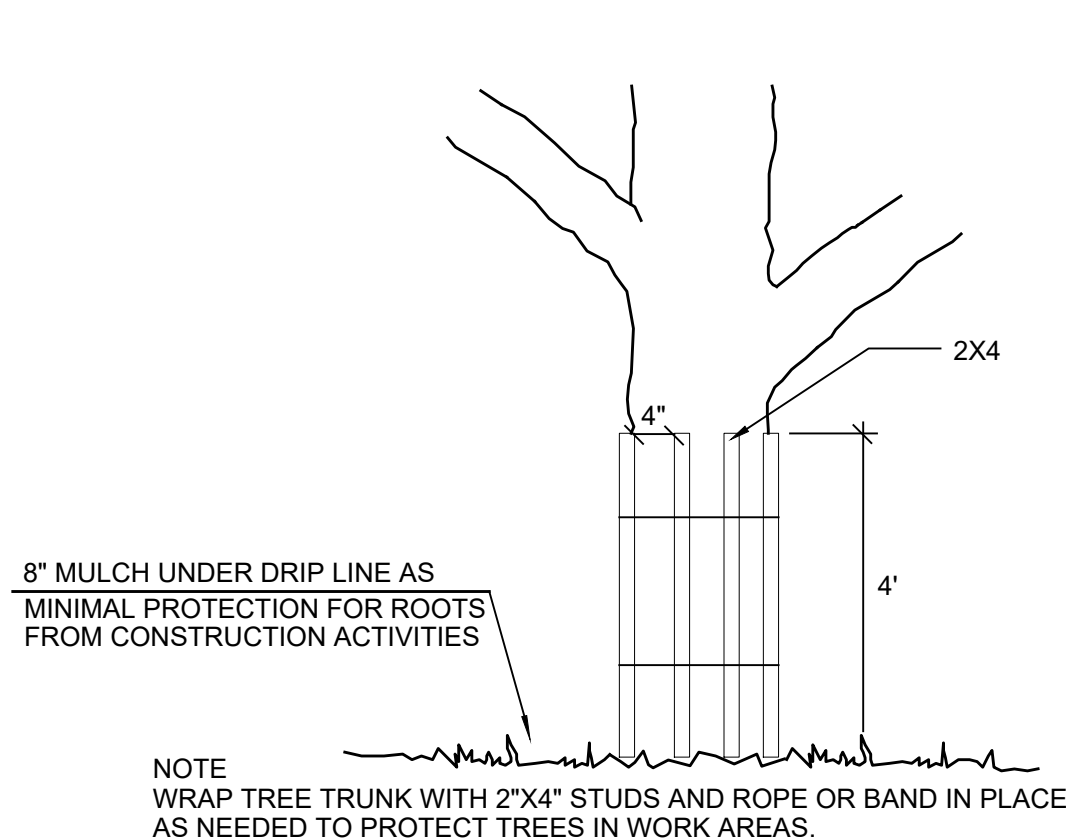
TREES THAT ARE MARKED TO BE PRESERVED ON A SITE PLAN AND FOR WHICH UTILITIES MUST PASS THROUGH THEIR ROOT PROTECTION ZONES MAY REQUIRE TUNNELING AS OPPOSED TO OPEN TRENCHES. THE DECISION TO TUNNEL WILL BE DETERMINED ON A CASE BY CASE BASIS BY THE ENGINEER.

TUNNELS SHALL BE DUG THROUGH THE ROOT PROTECTION ZONE IN ORDER TO MINIMIZE ROOT DAMAGE.



## 4 BORING THROUGH TREE ROOT (RPZ)

SECTION NOT TO SCALE



## 5 LEVEL II B TREE PROTECTION

ELEVATION NOT TO SCALE

LOVES GAS STATION TREE INVENTORY - UPLAND														
Tag #	Species	Tree Caliper	Understory Species* 5.0" - 11.5"		Significant Tree 6" - 23.5"		Significant Tree** 10.0" - 23.5"		Heritage 3:1		Heritage 1:1		Additional Inches Preserved	
			Removed	Preserved	Removed	Preserved	Removed	Preserved	Removed	Preserved	Removed	Preserved		
2	Gum Bumelia	8			6									
3	Gum Bumelia	6			6									
4	Gum Bumelia	6			6									
5	Gum Bumelia	7			7									
6	Condalia	5	5											
7	Condalia	6	6											
8	Condalia	5	5											
10	Hackberry	11					11							
11	Hackberry	10					10							
12	Gum Bumelia	9			9									
13	Gum Bumelia	9			9									
14	Hackberry	11					11							
16	Condalia	5	5											
17	Hackberry	12					12							
18	Condalia	7												
19	Condalia	5	5											
20	Cndalia	6	6											
21	Cedar Elm	6			6									
22	Condalia	6	6											
23	Hackberry	10					10							
24	Cedar Elm	6			6									
25	Condalia	5	5											
26	Cedar Elm	6			6									
28	Gum Bumelia	7			7									
29	Mesquite	10					10							
35	Cedar Elm	7			7									
36	Cedar Elm	9			9									
1003	Mesquite	15					15							
1006	Hackberry	10					10							
1006	Hackberry	10					10							
1009	Cndalia	6	6											
1010	Texas Persimmon	5	5											
1011	Cndalia	8	8											
1012	Mesquite	18					18							
1013	LAU	6	6											
1014	Mesquite	10					10							
1016	Texas Persimmon	5	5											
1017	Hackberry	12					12							
1018	Cndalia	5	5											
1019	Cndalia	5	5											
1020	Cedar Elm	8			8									
1021	Texas Persimmon	5	5											
1022	Mesquite	10					10							
1023	Hackberry	12					12							
1024	Cndalia	5	5											
1025	Live Oak	11			11									
1035	Hackberry	10					10							
1036	Hackberry	10					10							
1037	Hackberry	12					12							
1038	Hackberry	10					10							
1039	Hackberry	10					10							
1040	Hackberry	11					11							
1041	Hackberry	11					11							
1042	Hackberry	10					10							
1043	Hackberry	10					10							
2001	Mesquite	15					15							
2002	Gum Bumelia	9			9									
2003	Texas Persimmon	5	5											
2004	Mesquite	10					10							
2005	Mesquite	15					15							
2006	Mesquite	10					10							
2007	Texas Persimmon	5	5											
2008	Mesquite	10					10							
2009	Texas Persimmon	5	5											
2010	Cndalia	11	11											
2011	Cndalia	6	6											
2012	Mesquite	11					11							
2013	Hackberry	12					12							
2015	Mesquite	13					13							
2016	Texas Persimmon	5	5											
2017	Texas Persimmon	5	5											
2018	Hackberry	10					10							
2019	Cedar Elm	10			10									
2020	Live Oak	13				13								
2023	Mesquite	11					11							
2024	Cedar Elm	9			9									
2025	Live Oak	10			10									
2026	Texas Persimmon	5	5											
2032	Hackberry	11					11							
2033	Hackberry	12					12							
2034	Hackberry	11					11							
2035	Hackberry	12					12							
2036	Hackberry	15					15							
2025	Mesquite	14					12							
3038	Texas Persimmon	5		5										
3039	Mesquite	15					15							
3040	Hackberry	12					12							
Sub. Tot. Inches=			147	5	134	22	440	32	0	0	0	0	0	0
Total inches by category=			152		156		472		0	0	0	0		
Preservation percentage=			3%		Significant Preserv.	9%			Heritage Preservation=	#DIV/0!				
Mitigation required (Commercial)=			55.8		Commercial (inches)=	197.2			Heritage Mitigation (inches)=	0				
Mitigation required (Residential)=					Residential (inches)=									

LOVES GAS STATION TREE INVENTORY - FLOOD PLAIN														
Tag #	Species	Tree Caliper	Understory Species* 5.0" - 11.5"		Significant Tree 6" - 23.5"		Significant Tree** 10.0" - 23.5"		Heritage 3:1		Heritage 1:1		Additional Inches Preserved	
			Removed	Preserved	Removed	Preserved	Removed	Preserved	Removed	Preserved	Removed	Preserved		
32	Hackberry	10					10							
33	Mesquite	10					10							
1030	Gum Bumelia	7			7									
1026	Live Oak	21					21							
2027	Hackberry	10			10									
Sub. Tot. Inches=			0	0	17	0	29	21	0	0	0	0	0	0
Total inches by category=					17		41							
Preservation percentage=			#DIV/0!		Significant	36%			Heritage Preservation=	#DIV/0!				
Mitigation required (Commercial)=			0		Commercial (inches)=	25.4			Heritage Mitigation (inches)=	0				
Mitigation required (Residential)=					Residential (inches)=									

LOVES GAS STATION TREE INVENTORY - ESA														
Tag #	Species	Tree Caliper	Understory Species* 5.0" - 11.5"		Significant Tree 6" - 23.5"		Significant Tree** 10.0" - 23.5"		Heritage 3:1		Heritage 1:1		Additional Inches Preserved	
			Removed	Preserved	Removed	Preserved	Removed	Preserved	Removed	Preserved	Removed	Preserved		
1	Hackberry	11					11							
31	Hackberry	11					11							
34	Gum Bumelia	16					16							
1031	Live Oak	23					23							
1032	Live Oak	11					11							
1033	Live Oak	26								26				
1034	Live Oak	15					15							
2021	Live Oak	36								36				
2022	Live Oak	34								34				
Sub. Tot. Inches=			0	0	0	65	11	11	0	96	0	0	0	0
Total inches by category=						65		22		96				
Preservation percentage=			#DIV/0!		Significant Preserv.	87%			Heritage Preservation	100%				
Mitigation required (Commercial)=			0		Commercial (inches)=	-6.4			Heritage Mitigation (inches)=	0				
Mitigation required (Residential)=					Residential (inches)=									



201 GROVETON | SATX 78210  
210.314.5582 | MPSTUD.IO



03-08-2024

PROJECT

LOVES  
S PRESA ST



# LANDSCAPE STREET BUFFER TYPE-A

# LANDSCAPE STREET BUFFER TYPE-A

## MITIGATION TREES

Tree Mitigation	Count	Caliper	Total
MONTERRY OAK- PARKING	9	1.5	13.5
MONTERRY OAK	20	3	60
RED OAK-PARKING	11	1.5	16.5
RED OAK-BUFFER	10	1.5	15
RED OAK	12	3	36
BURR OAK PARKING	11	1.5	16.5
BURR OAK-BUFFER	6	1.5	9
BURR OAK	16	3	48
MEXICAN SYAMORE-PARKING	14	1.5	21
MEXICAN SYAMORE-BUFFER	7	1.5	10.5
MEXICAN SYAMORE	11	3	33
TOTAL TREE MITIGATION	127		279

## LANDSCAPE ORDINANCE

**1. PARKING LOT SHADING.** TWENTY (20) POINTS ARE AWARDED FOR COMPLIANCE WITH SUBSECTION (c)(7), ABOVE. FURTHER, AN ADDITIONAL: A) FIVE (5) POINTS ARE AWARDED WHEN SURFACE PARKING LOTS INCLUDE CANOPY TREES, AS DEFINED IN APPENDIX "A", WHICH SHADE A MINIMUM OF THIRTY-FIVE (35) PERCENT OF ANY INDIVIDUAL PARKING LOT. AND B) FIFTEEN (15) POINTS ARE AWARDED WHEN SURFACE PARKING LOTS INCLUDE CANOPY TREES, AS DEFINED IN APPENDIX "A", WHICH SHADE A MINIMUM OF FIFTY (50) PERCENT OF ANY INDIVIDUAL PARKING LOT.

PARKING LOT AREA = 70,340 SF @ 35% =	24,619 SF REQUIRED
SHADING PROVIDED:	
(9) MONTEREY OAK @ 875 SF (50% CREDIT) =	3,938 SF
(11) BURR OAK @ 1200 SF (50% CREDIT) =	6,600 SF
(11) RED OAK @ 1200 SF (50% CREDIT) =	6,600 SF
(14) MEXICAN SYCAMORE @ 1200 SF (50% CREDIT) =	8,400 SF
TOTAL PARKING LOT SHADE SF	25,537.5 SF (36%) ~ <b>25 POINTS</b>

**2. TREE PRESERVATION:** A MAXIMUM OF FORTY (40) POINTS SHALL BE AWARDED FOR THE PRESERVATION OF EXISTING HEALTHY TREES. FULL CREDIT IN ACCORDANCE WITH THE CRITERIA LISTED BELOW SHALL BE EARNED FOR THE PRESERVATION OF TREES WITHIN THE STREET YARD UP TO THIRTY (30) POINTS. HALF CREDIT MAY BE EARNED FOR PRESERVING TREES WITHIN THE STREET YARD ABOVE THIRTY (30) POINTS. HALF CREDIT MAY ALSO BE EARNED FOR PRESERVING TREES OUTSIDE THE STREET YARD UP TO A MAXIMUM OF FIFTEEN (15) POINTS.

TREES OUTSIDE STREET YARD

#11 HACKBERRY - 10" CALIPER	2 POINTS
#12 GUM - 9" CALIPER	2 POINTS
#13 GUM - 9" CALIPER	2 POINTS
#36 CEDAR ELM - 9" CALIPER	2 POINTS
#1043 HACKBERRY - 10" CALIPER	2 POINTS
#3025 MESQUITE - 14" CALIPER	3 POINTS

TREES IN STREET YARD

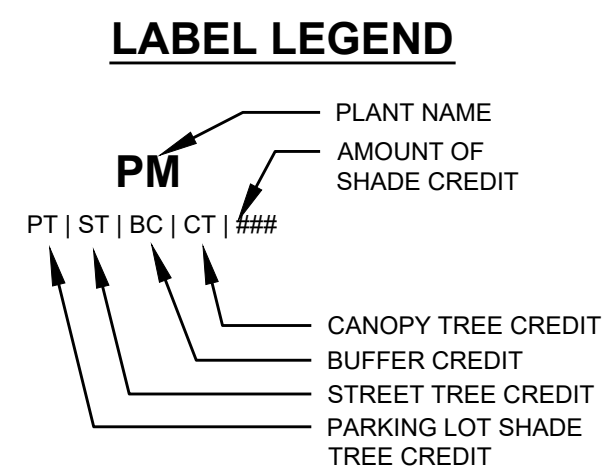
#1 HACKBERRY - 11" CALIPER	4 POINTS
#2 GUM - 8" CALIPER	4 POINTS
TOTAL POINTS	14 POINTS

**3. PARKING LOT SCREENING:** TWENTY-FIVE (25) POINTS ARE AWARDED FOR SCREENING A SURFACE PARKING LOT WITHIN THE STREET YARD IN ACCORDANCE WITH THE FOLLOWING SUBSECTIONS: A) THE SCREENING MUST EXTEND ALONG THE ENTIRE STREET FRONTAGE OF THE SURFACE PARKING LOT, EXCLUSIVE OF DRIVEWAYS. B) THE SCREENING MUST BE AT LEAST THIRTY (30) INCHES IN HEIGHT. IF PLANTS ARE USED, THEY MUST ACHIEVE THE MINIMUM HEIGHT AND FORM AN OPAQUE VISUAL BARRIER AT MATURITY. IF NON-LIVING MATERIALS ARE USED TO SATISFY THE SCREENING REQUIREMENT, PLANTS MUST BE PROVIDED ALONG A MINIMUM OF TWENTY-FIVE (25) PERCENT OF THE SCREENS FRONTAGE. C) ANY SCREENING PLACED IN A CLEAR VIEW AREA MUST COMPLY WITH THE RESTRICTIONS CONTAINED IN SECTION 35-506 OF THIS CHAPTER.

PROPOSED PARKING LOT SCREENING SATISFIES CRITERIA ~ **25 POINTS**

**71 TOTAL LANDSCAPE POINTS PROVIDED**

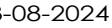
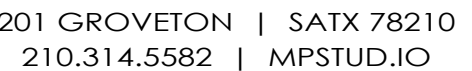
# LANDSCAPE STREET BUFFER TYPE-B



ISSUE SETS		
NO.	DATE	DESCRIPTION
1	10.23.23	ADDENDUM #1
4	12.12.23	ADDENDUM #4
5	12.19.23	ADDENDUM #5
6	03.08.24	CITY COMMENTS

<b>SHEET INFORMATION</b>	
PROJECT NO.	
23034	
DATE ISSUED	
MARCH 8, 2024	
SHEET NAME	
<b>OVERALL PLANTING PLAN</b>	
SHEET NUMBER	





LOVES  
S PRESA ST

9530 SOUTHTON RD  
SAN ANTONIO, TX 78223

**LOVES**  
0601 N PENNSYLVANIA AVE  
OKLAHOMA CITY, OK

**BRAD PECK**  
295.475.5803  
rad.Peck@loves.com

SUBCONSULTANT

## SHEET INFORMATION

23034

MARCH 8, 2024

## PLANTING PLAN

## LP 1.1



SCALE: 1"=20'



# LANDSCAPE

## PLAN





## PROJECT

LOVES  
S PRESA ST

### PROJECT ADDRESS

9530 SOUTHTON RD  
SAN ANTONIO, TX 78223

## OWNER | CLIENT

**LOVES**  
0601 N PENNSYLVANIA AVE  
OKLAHOMA CITY, OK

## OWNER'S REPRESENTATIVE

**BRAD PECK**  
295.475.5803  
d.Peck@loves.com

**UBCONSULTANT**

## ISSUE SETS

NO.	DATE	DESCRIPTION
1	10.23.23	ADDENDUM #1
4	12.12.23	ADDENDUM #4
5	12.19.23	ADDENDUM #5
6	03.08.24	CITY COMMENTS

## SHEET INFORMATION

PROJECT NO.

23034

DATE ISSUED

MARCH 8, 2024

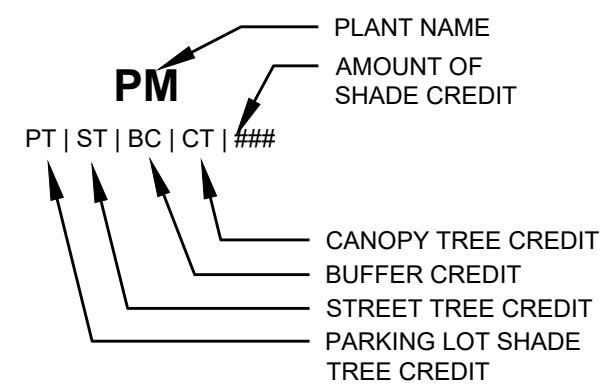
SHEET NAME

## LANTING PLAN

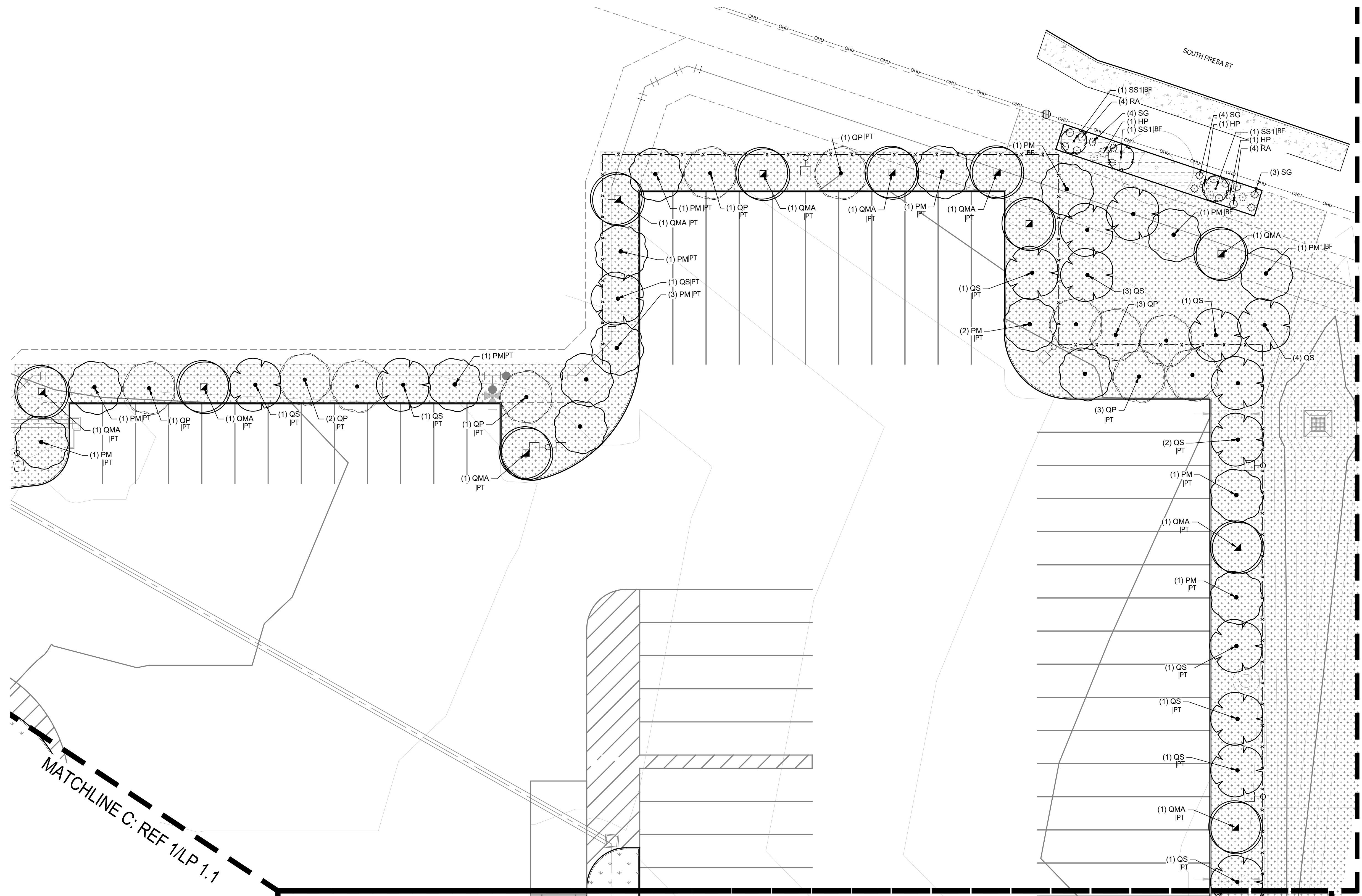
**SHEET NUMBER**

## LP 1.2

### LABEL LEGEND



NOTE: ALL TREES IN TURF AREA TO HAVE 4' DIAMETER MULCH RING, EXISTING TREES THAT REMAIN IN TURF AREAS MULCH RING SHOULD BE ADJUSTED BASED ON SIZE OF TREE



MATCHLINE C: REF 1/LP 1.1

MATCHLINE E: REF 1/LP 1.3

SCALE: 1"=20'





## PROJECT

LOVES  
S PRESA ST

## PROJECT ADDRESS

9530 SOUTHTON RD  
SAN ANTONIO, TX 78223

## OWNER | CLIENT

**LOVES**  
0601 N PENNSYLVANIA AVE  
OKLAHOMA CITY, OK

## OWNER'S REPRESENTATIVE

**BRAD PECK**  
295.475.5803  
Brad.Peck@loves.com

## SUBCONSULTANT

ISSUE SETS		
NO.	DATE	DESCRIPTION
1	10.23.23	ADDENDUM #1
4	12.12.23	ADDENDUM #4
5	12.19.23	ADDENDUM #5
6	03.08.24	CITY COMMENTS

## SHEET INFORMATION

PROJECT NO.

3034

DATE ISSUED

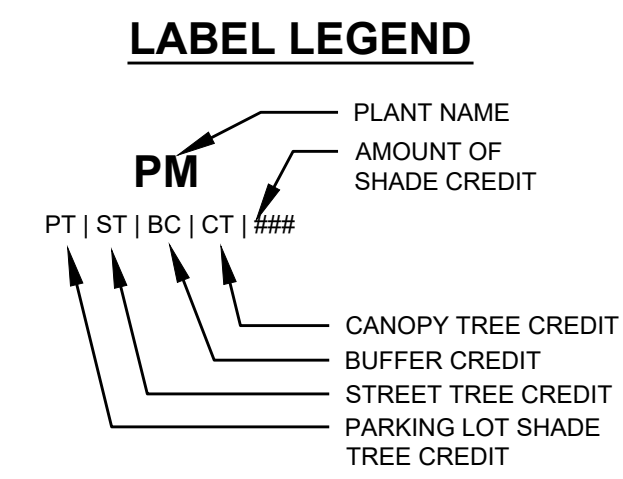
MARCH 8, 2024

SHEET NAME

## LANTING PLAN

SHEET NUMBER

## LP 1.3



MATCHLINE E: REF 1/LP 1.2

NOTE: ALL TREES IN TURF AREA TO HAVE 4' DIAMETER MULCH RING, EXISTING TREES THAT REMAIN IN TURF AREAS MULCH RING SHOULD BE ADJUSTED BASED ON SIZE OF TREE

MATCHLINE B: REF 1/LP 1.1

# 1 LANDSCAPE

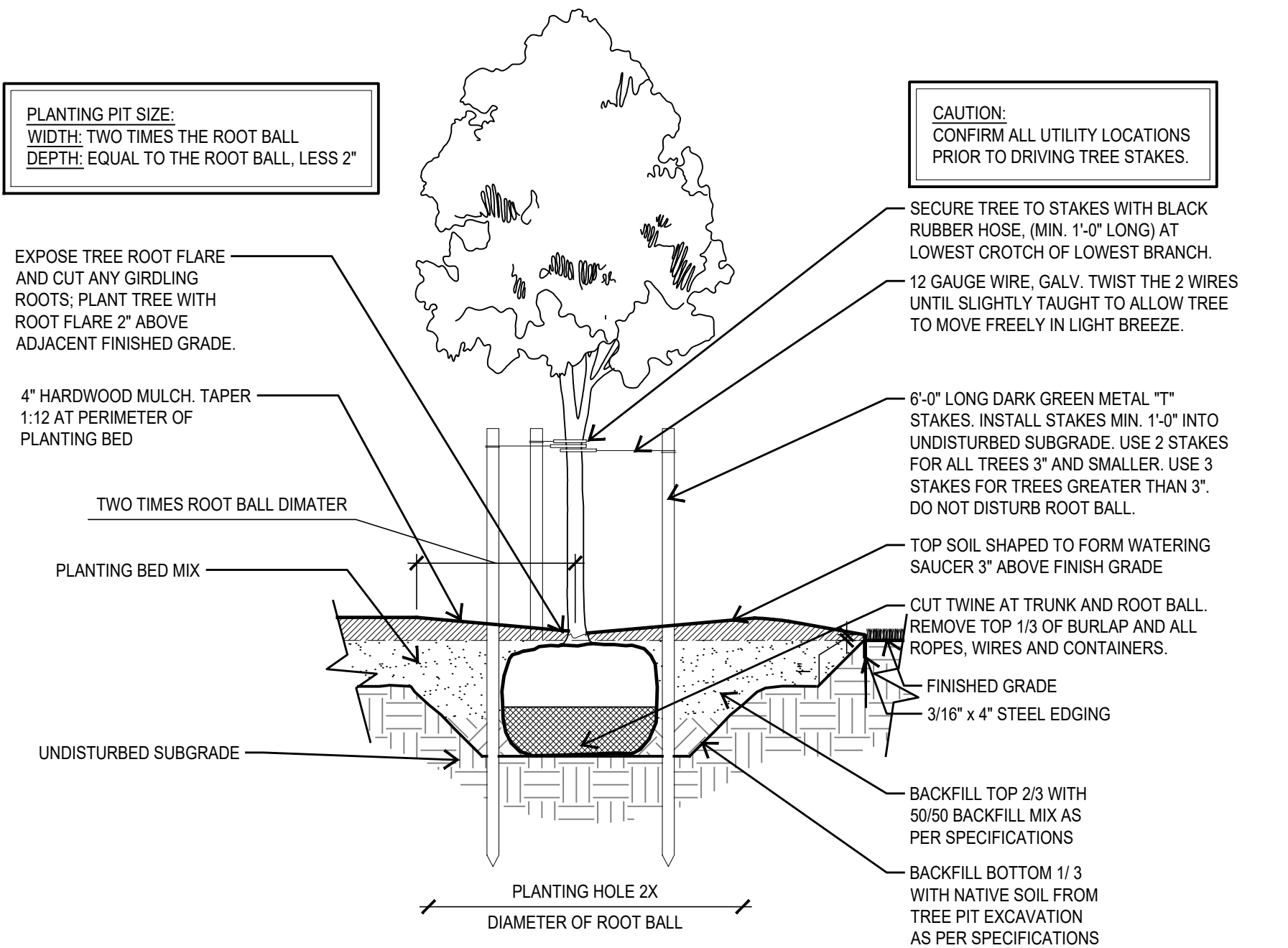
---

## PLAN

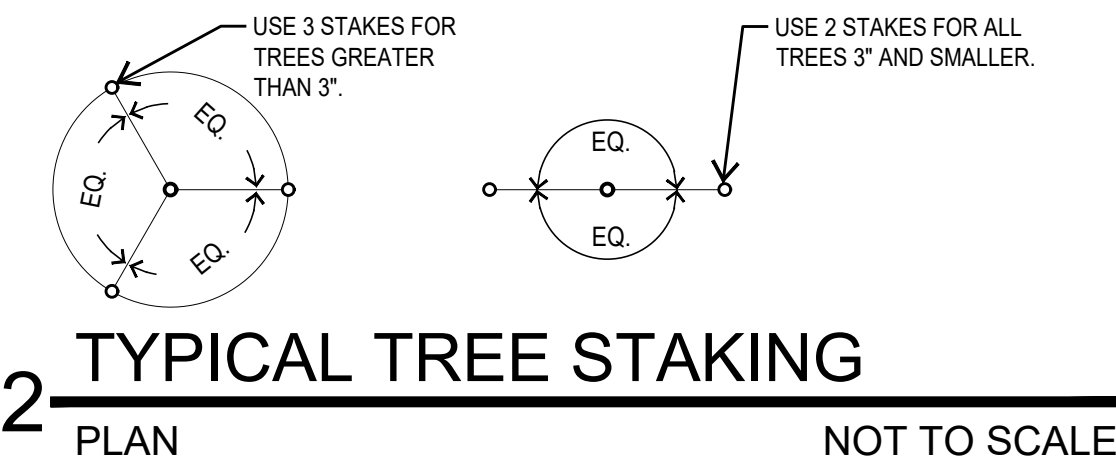


SCALE: 1"=20'

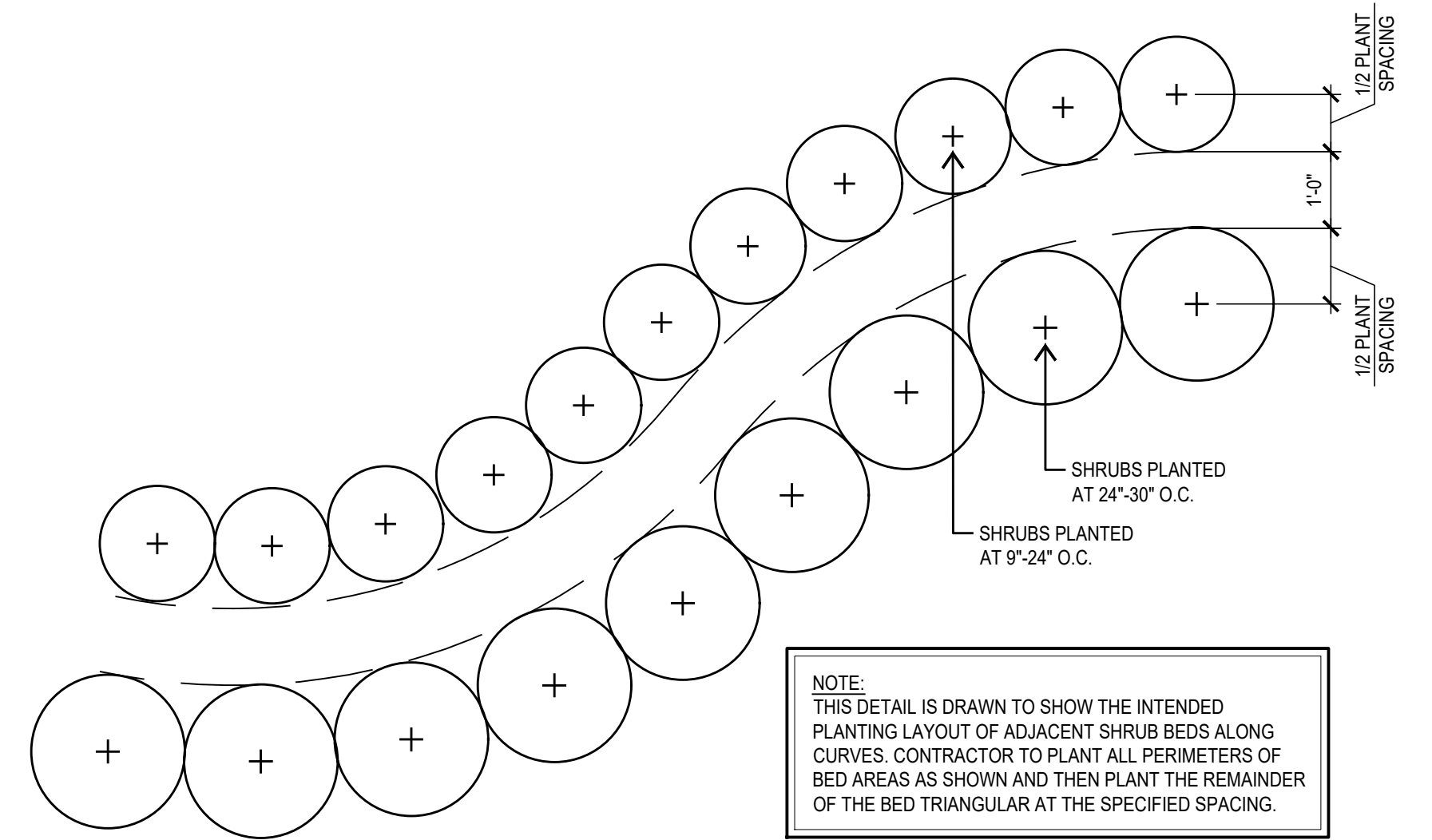




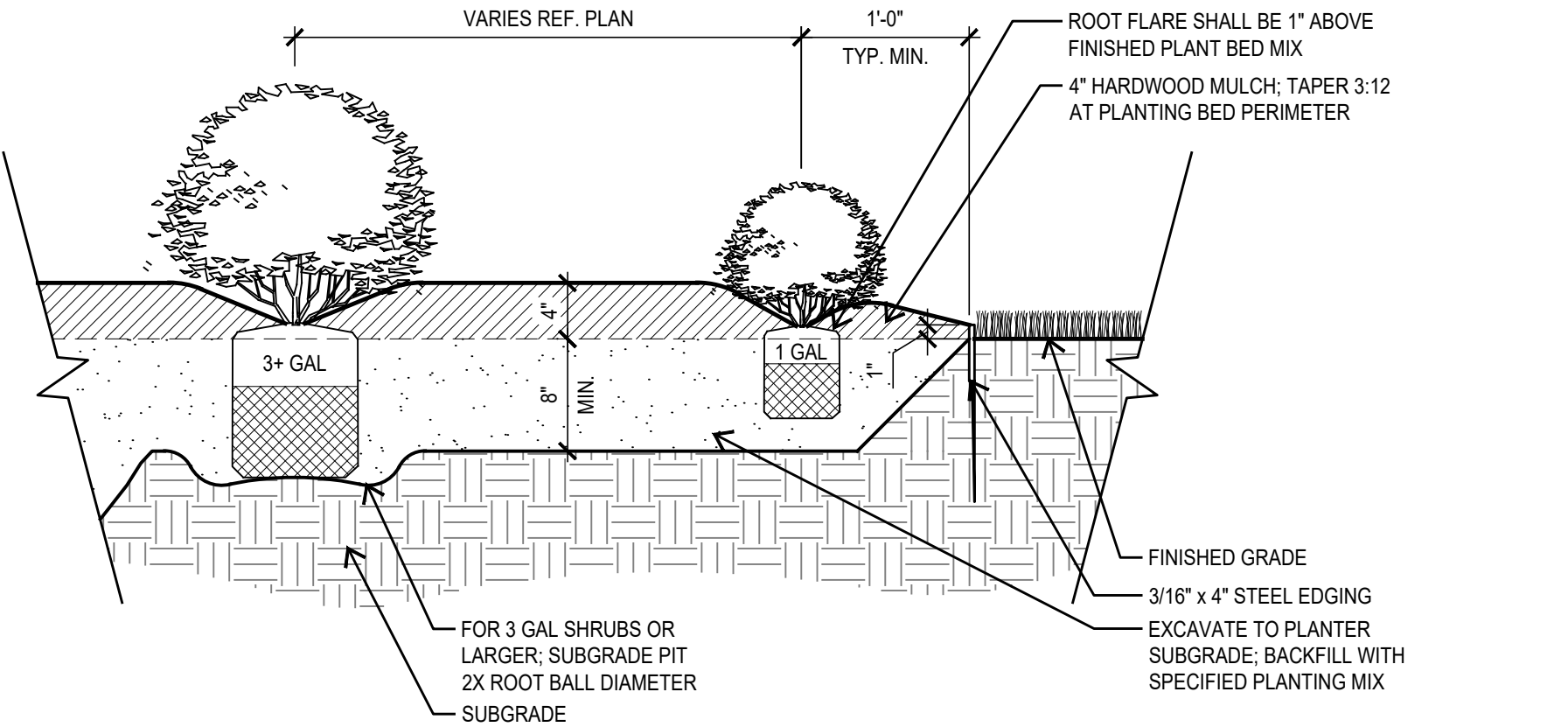
1 **TYPICAL TREE PLANTING AT BED**  
SECTION NOT TO SCALE



2 **TYPICAL TREE STAKING**  
PLAN NOT TO SCALE



3 **TYPICAL SHRUB SPACING**  
PLAN NOT TO SCALE



4 **TYPICAL SHRUB PLANTING**  
SECTION NOT TO SCALE

## PLANT SCHEDULE

SYMBOL	CODE	QTY	BOTANICAL NAME	COMMON NAME	SIZE	REMARKS
<b>TREES</b>						
	PM	32	PLATANUS MEXICANA	MEXICAN SYCAMORE 'ALAMO'	3" CAL.	SINGLE TRUNK CONTAINER GROWN; STRAIGHT TRUNK WITH FULL AND UNIFORM CANOPY; PARK GRADE NOT ACCEPTABLE
	QMA	33	QUERCUS MACROCARPA	BURR OAK	3" CAL.	SINGLE TRUNK B&B; STRAIGHT TRUNK WITH FULL AND UNIFORM CANOPY; PARK GRADE NOT ACCEPTABLE
	QP	29	QUERCUS POLYMORPHA	MONTEREY OAK	3" CAL.	SINGLE TRUNK B&B; STRAIGHT TRUNK WITH FULL AND UNIFORM CANOPY; PARK GRADE NOT ACCEPTABLE
	QS	33	QUERCUS SHUMARDII	SHUMARD RED OAK	3" CAL.	SINGLE TRUNK B&B; STRAIGHT TRUNK WITH FULL AND UNIFORM CANOPY; PARK GRADE NOT ACCEPTABLE
<b>ORNAMENTAL TREES</b>						
	CC	10	CERCIS CANADENSIS	EASTERN REDBUD	1.5" CAL.	MULTI-TRUNK ; STRAIGHT TRUNK WITH FULL AND UNIFORM CANOPY; PARK GRADE NOT ACCEPTABLE
	SS1	15	SOPHORA SECUNDIFLORUM	TEXAS MOUNTAIN LAUREL	1.5" CAL.	MULTI-TRUNK ; STRAIGHT TRUNK WITH FULL AND UNIFORM CANOPY; PARK GRADE NOT ACCEPTABLE
<b>SHRUBS</b>						
	HP	18	HESPERALOE PARVIFLORA	RED YUCCA	3 GAL.	DARK GREEN; FULL; PLANT 48" O.C.
	IN	47	ILEX VOMITORIA 'NANA'	DWARF YAUPON HOLLY	3 GAL.	DARK GREEN; FULL; PLANT 48" O.C.
	LS	37	LEUCOPHYLLUM FRUTESCENS 'SILVERADO'	TEXAS SAGE	3 GAL.	DEEP SILVER GREEN; FULL; PLANT 48" O.C.
	RA	30	ROSMARINUS OFFICINALIS 'UPRIGHT BLUE'	UPRIGHT BLUE ROSEMARY	5 GAL.	DARK GREEN; FULL; PLANT 36" O.C.
	SG	36	SALVIA GREGGII	CHERRY SAGE	3 GAL.	DARK GREEN; FULL; PLANT 36" O.C.
	TG	58	TECOMA STANS STANS 'GOLD STAR'	GOLD STAR YELLOW BELLS	3 GAL.	DARK GREEN; FULL; PLANT 48" O.C.
	SOD		TIFF 419 BERMUDA GRASS - CYNODON DACTYLON			LOCAL SOURCE
	HYDROSEED		COMMON BERMUDA - CYNODON DACTYLON; SEEDS 2 LBS/ 1,000 SQ.FT.			LOCAL SOURCE

## ISSUE SETS

NO.	DATE	DESCRIPTION
1	10.23.23	ADDENDUM #1
4	12.12.23	ADDENDUM #4
5	12.19.23	ADDENDUM #5
6	03.08.24	CITY COMMENTS

## SHEET INFORMATION

### PROJECT NO.

23034

### DATE ISSUED

MARCH 8, 2024

### SHEET NAME

## PLANT LIST & DETAILS

### SHEET NUMBER

WATERING SCHEDULE					
PRECIPITATION RATE (IN/HR)	WATER DESIRED (IN/WK)	TIME/CYCLE (MIN)	NUMBER OF ZONES	TOTAL TIME MIN.       HRS	
TREE BUBBLERS (3.87)	.80	12.0	12	144	2.40
DRIP/EMITTER ZONE (.64)	.80	75.0	5	375	6.25
<u>TOTAL SYSTEM HOURS OF OPERATION PER WEEK:</u>				8.65	
NOTE: A TYPICAL SCHEDULE WOULD ALLOW WATERING TO OCCUR TWO TIMES PER WEEK. TOTAL WATERING TIME WOULD BE DIVIDED BY THE NUMBER OF WATERING DAYS. THIS SCHEDULE IS DESIGNED FOR SUMMER WATER USAGE AND ESTABLISHMENT OF NEW PLANTING.					

PRESSURE CALCULATIONS - Zone #2	
DESIGN STATISTICS FOR CALCULATIONS	
TOTAL ZONE FLOW:	32.0 g.p.m
ELECTRIC VALVE SIZE:	1.5"
STATIC PRESSURE LESS 10% (STATIC @ 65 psi):	58.5 p.s.i.
ACCUMULATIVE LOSSES FROM CITY MAIN TO FURTHEST HEAD:	
SPRINKLER HEAD REQUIREMENT:	30.0 p.s.i.
ZONE PIPE/FITTING LOSS:	3.1 p.s.i.
1.5" ELECTRIC VALVE LOSS:	1.5 p.s.i.
ELEVATION NET LOSS: (+ - FT):	n/a
SYSTEM MAINLINE LOSS (2 1/2 SCH 40 LOOP):	2.7 p.s.i.
BACKFLOW PREVENTOR LOSS (1"):	4.0 p.s.i.
WATER METER LOSS (1"):	5.3 p.s.i.
MASTER ELECTRIC VALVE LOSS (1.5"):	1.5 p.s.i.
TYPE K COPPER SERVICE LOSS:	
TOTAL NET LOSS:	18.1 p.s.i.
DESIGN PRESSURE:	48.1 p.s.i.
NOTE: ACTUAL STATIC WATER PRESSURE WAS UNAVAILABLE AT THE TIME OF IRRIGATION DESIGN. 65 PSI IS USED AS A STANDARD PRESSURE FOR DESIGN. PRESSURE MUST BE CONFIRMED 65 OR GREATER BY IRRIGATION CONTRACTOR BEFORE ANY INSTALLATION. PIPE HAS BEEN SIZE TO INSURE THAT VELOCITY DOES NOT EXCEED 5 FPS. DO NOT CHANGE PIPE SIZE IN THE FIELD WITHOUT CONSULTING SYSTEM DESIGNER.	

IRRIGATION CONSTRUCTION NOTES	
1. IT IS THE IRRIGATION CONTRACTORS SOLE RESPONSIBILITY TO CONFIRM THE ACTUAL ONSITE WATER PRESSURE FROM THE SOURCE. IF WATER PRESSURE IS LESS THAN MANDATED THEN IMMEDIATELY NOTIFY THE OWNERS REPRESENTATIVE. IF ACTUAL SITE STATIC PRESSURE EXCEEDS DESIGN PRESSURE BY 15 P.S.I. IN ANY ZONE, A PRESSURE REDUCING VALVE SHALL BE INSTALLED.	
2. DO NOT WILLFULLY PROCEED WITH CONSTRUCTION AS DESIGN WHEN IT IS OBVIOUS THAT UNKNOWN OBSTRUCTIONS AND/OR GRADE DIFFERENCES EXIST THAT MAY NOT HAVE BEEN KNOWN DURING DESIGN. SUCH CONDITIONS SHALL BE IMMEDIATELY BROUGHT TO THE ATTENTION OF THE OWNERS REPRESENTATIVE. THE IRRIGATION CONTRACTOR SHALL ASSUME FULL RESPONSIBILITY FOR ALL NECESSARY REVISIONS DUE TO FAILURE TO GIVE SUCH NOTIFICATION.	
3. THE IRRIGATION CONTRACTOR IS REQUIRED BY LAW TO NOTIFY TEXAS ONE CALL (800-245-4545) 72 HOURS PRIOR TO ANY EXCAVATION. IRRIGATION CONTRACTOR SHALL BE RESPONSIBLE FOR MAKING THEMSELVES FAMILIAR WITH ALL UNDERGROUND UTILITIES AND PIPES. IRRIGATION CONTRACTORS SHALL TAKE SOLE RESPONSIBILITY FOR ANY COSTS INCURRED DUE TO DAMAGE OF SAID UTILITIES WHETHER OR NOT TEXAS ONE CALL IS NOTIFIED.	
4. DUE TO SCALE OF DRAWINGS, IT IS NOT POSSIBLE TO INDICATE ALL OFFSETS, FITTINGS, SLEEVES, ETC. WHICH MAY BE REQUIRED. IRRIGATION CONTRACTOR SHALL CAREFULLY INVESTIGATE THE STRUCTURAL AND FINISHED CONDITIONS AFFECTING ALL OF HIS WORK AND PLAN HIS WORK ACCORDINGLY. FURNISHINGS SUCH FITTINGS, ETC AS MAY BE REQUIRED TO MEET SUCH CONDITIONS. DRAWINGS ARE GENERALLY DIAGRAMMATIC AND INDICATIVE OF THE WORK TO BE INSTALLED. THE WORK SHALL BE INSTALLED IN SUCH A MANNER AS TO AVOID CONFLICTS BETWEEN IRRIGATION SYSTEM, PLANTING, AND ARCHITECTURAL FEATURES. THIS DESIGN IS DIAGRAMMATIC. ALL PIPING, VALVES, ETC., SHOWN WITHIN PAVED AREAS IS FOR DESIGN CLARIFICATION ONLY AND SHALL BE INSTALLED IN PLANTING AREAS AND WITHIN PROPERTY LINES.	
5. LATERAL PIPE SHALL BE INSTALLED AT MIN. DEPTH OF 12" WITH MAINLINE PIPE / WIRE TO BE INSTALLED AT A MINIMUM OF 18". NO MACHINE TRENCHING IS TO BE DONE WITHIN DRIPLINE OF TREES. TRENCHING IS TO BE DONE BY HAND OR BY TUNNELING UNDER ROOT SYSTEM BY METHOD APPROVED BY OWNER'S REPRESENTATIVE. PIPING LAYOUT IS DIAGRAMMATIC AND PIPING SHALL BE ROUTED AROUND EXISTING PLANT MATERIAL TO AVOID DAMAGE TO EXISTING PLANTS. DO NOT CUT ANY ROOT OVER 3/4" DIAMETER. ANY CUTS MADE SHALL BE CLEAN AND WITHOUT FRAYED ENDS.	
6. IRRIGATION CONTRACTOR SHALL BE RESPONSIBLE FOR SLEEVES WHEREVER PIPING OR CONDUIT PASSES, UNDER ALL PAVING, THROUGH WALLS, ETC. ALL SLEEVE LOCATIONS MAY NOT BE SHOWN ON PLAN, COORDINATE WITH ARCHITECTURAL AND CIVIL DRAWINGS, GENERAL CONTRACTOR, AND OTHER SUBCONTRACTORS AS REQUIRED. ALL SLEEVES SHALL BE SCH 40 PVC, SIZED TWICE THE DIAMETER OF PIPE OR COMBINATION OF PIPES ENCLOSED WITHIN THE SLEEVE.	
7. ALL PIPE CONNECTIONS SHALL BE PRIMED WITH AN APPROVED COLOR PRIMER BEFORE BEING CHEMICAL WELDED.	
8. IT IS THE IRRIGATION CONTRACTORS RESPONSIBILITY TO COORDINATE PIPING WITH THE LANDSCAPE SUBCONTRACTOR TO AVOID CONFLICT WITH PLANTING BEDS. IT WILL BE THE RESPONSIBILITY OF THE IRRIGATION SUBCONTRACTOR TO MOVE PIPING TO ALLOW PROPER ADJUSTMENTS TO ENSURE PROPER COVERAGE AT NO ADDITIONAL COST TO THE OWNER.	
9. ALL ROTORS SHALL BE LOCATED 12" FROM PAVEMENT, CURBS OR EDGE OF STRUCTURE, ALL SPRAY HEADS SHALL BE LOCATED 6" FROM PAVEMENT, CURBS OR EDGE OF STRUCTURE.	
10. USE RIGID SCH 80 PVC SWING JOINT ASSEMBLIES TO CONNECT ALL ROTARY HEADS AND QUICK COUPLERS.	
11. ALL SPRAY HEADS SHALL BE CONNECTED WITH A 12" MINIMUM LENGTH OF 1/2" FLEX PVC.	
12. ALL LANDSCAPE PLANTING AREAS IRRIGATED WITH DRIP SHOULD BE INSTALLED AT 18" SPACING.	
13. ALL TURF AREAS IRRIGATED WITH DRIP SHOULD BE INSTALLED 12" SPACING.	
14. ALL IRRIGATION WIRES SHALL BE UL LISTED FOR DIRECT BURIAL AND BE A MINIMUM #14 GAUGE. WIRE SPLICES SHALL INCLUDE DBY CONNECTORS AS RECOMMENDED BY 3M COMPANY.	
15. ELECTRIC POWER SHALL BE PROVIDED TO CONTROLLER LOCATION BY GENERAL CONTRACTOR. IRRIGATION CONTRACTOR SHALL PROVIDE FINAL HARD-WIRE TO CONTROLLERS.	
16. VALVE BOXES SHALL BE INSTALLED FLUSH WITH GRADE, SUPPORTED BY BRICKS IF NECESSARY. INSTALL 3" OF PEA GRAVEL BELOW THE VALVE. USE 12" X 17" RECTANGULAR VALVE BOXES WITH A PURPLE LID FOR QUICK COUPLING VALVES AND 10" ROUND BOXES FOR ELECTRIC VALVES UNLESS NOTED OTHERWISE.	
17. VALVE AND CIRCUIT SHALL BE SEPARATED BASED ON WATER USE, SO THAT TURF AREAS ARE WATERED SEPARATELY FROM SHRUB AND GROUNDCOVER AREAS. IRRIGATION HEADS IN THE TURF AREAS WILL BE VALVED SEPARATELY FROM SHRUB AND/OR GROUNDCOVER AREAS. IT IS RECOMMENDED THAT SEASONAL COLOR AREAS BE WATERED SEPARATELY. UNDER NO CIRCUMSTANCES ARE ZONE TYPES TO BE COMBINED.	
18. FINAL LOCATION OF CONTROLLER, WATER METER, BACKFLOW DEVICE, MASTER VALVE, FLOW SENSOR, AND WEATHER SENSOR SHALL BE APPROVED BY GENERAL CONTRACTOR, LANDSCAPE ARCHITECT, OR AN OWNERS REPRESENTATIVE.	
19. AFTER AWARD OF CONTRACT AND BEFORE ANY IRRIGATION SYSTEM MATERIALS ARE ORDERED FROM SUPPLIERS OR DELIVERED TO THE JOB SITE, SUBMIT TO THE OWNER A COMPLETE LIST OF ALL IRRIGATION SYSTEM MATERIALS, OR PROCESSES PROPOSED TO BE FURNISHED AND INSTALLED AS PART OF THIS CONTRACT. THE LANDSCAPE ARCHITECT OR OWNERS'S AUTHORIZED REPRESENTATIVE WILL ALLOW NO SUBSTITUTIONS WITHOUT PRIOR WRITTEN ACCEPTANCE.	
20. IRRIGATION CONTRACTOR WILL SUPPLY A COMPLETE AS BUILT DRAWING TO INCLUDE EXACT LOCATION OF ALL MAINLINE, VALVES, CONTROLLERS, QUICK COUPLERS, POINT OF CONNECTION, AND WIRE PATH. IRRIGATION CONTRACTOR WILL SUPPLY A COMPLETE SET OF OPERATION AND MAINTENANCE MANUALS.	
21. PROVIDE A COLORED LAMINATED ZONE MAP AND INSTALL AT THE CONTROLLER.	
22. THE IRRIGATION CONTRACTOR SHALL COMPLY WITH ALL LOCAL AND STATE MANDATED IRRIGATION ORDINANCES AND SHALL SECURE ALL NECESSARY PERMITS AND PAY ALL ASSOCIATED FEES UNLESS OTHERWISE NOTED. ANY DISCREPANCIES SHALL BE DISCUSSED PRIOR TO CONSTRUCTION.	

Statement of Conformance:  
I, JOSEPH A. FERDIN, LICENSED IRRIGATOR #0022076, HEREBY CERTIFIES THAT THIS IRRIGATION DESIGN CONFORMS TO THE DESIGN AND INSTALLATION PARAMETERS OF THE IRRIGATION DESIGN AND EQUIPMENT STANDARDS SET OUT 35-510(J) AND 35-511(C) (6) OF THE CITY OF SAN ANTONIO UNIFIED DEVELOPMENT CODE.

Joseph A Ferdin TX LI # 22076

IRRIGATION LEGEND	
KEY	EXPLANATION
	1" DEDICATED IRRIGATION METER
	1" DOUBLE CHECK BACKFLOW DEVICE IN SEPARATE VALVE BOX PER LOCAL CODES.
	1.5" MASTER VALVE, HUNTER ICV-151G NORMALLY CLOSED VALVE
	TREE BUBBLER ASSEMBLY - ON 6" POP UP
	IRRIGATION CONTROLLER HUNTER ACC-99D. FINAL LOCATION TO BE DETERMINED AFTER CONSULTING WITH LANDSCAPE ARCHITECT
	WEATHER SENSOR HUNTER SOLAR-SYNC. FINAL LOCATION TO BE DETERMINED AFTER CONSULTING WITH LANDSCAPE ARCHITECT
	HUNTER ICV-AS-ADJ SERIES - REMOTE CONTROL VALVE
	RAINBIRD DRIP CONTROL ZONE VALVE - REF DETAILS
	MANUAL ISOLATION VALVE - SIZE OF MAINLINE
	DRIPLINE: RAINBIRD XF SERIES DRIPLINE. FOR BED AREAS USE XFD-09-18, FOR TURF AREAS USE XFS-09-12
	MAIN LINE - USE SCH-40 PVC PIPE AS DESIGNATED ON PLANS
	LATERAL LINE - SIZE AS NOTED ON PLANS. USE CLASS 315 ON 1/2" PIPE AND CLASS 200 IPS PVC ON 3/4" AND LARGER PIPE.
	IRRIGATION SLEEVE - USE 2 SIZES LARGER THAN TOTAL DIAMETER OF PIPE/S DESIGNATED FOR CROSSING PAVING. VALVE WIRING MAY RUN IN THE SAME SLEEVES. USE SCH 40 PVC PIPE.

ZONE IDENTIFICATION  
 IRRIGATION ZONE SIZE IN GALLONS PER MINUTE  
 ZONE SIZE

MPSTUDIO

201 GROVETON | SATX 78210  
210.314.5582 | MPSTUD.IO

03-08-2024

PROJECT

LOVES S PRESA ST

PROJECT ADDRESS  
9530 SOUTHTON RD  
SAN ANTONIO, TX 78223

OWNER | CLIENT  
LOVES  
10601 N PENNSYLVANIA AVE  
OKLAHOMA CITY, OK

OWNER'S REPRESENTATIVE  
BRAD PECK  
295.475.5803  
Brad.Peck@loves.com

SUBCONSULTANT

REVISIONS


ISSUE SETS

NO.	DATE	DESCRIPTION
1	10.23.23	ADDENDUM #1
4	12.12.23	ADDENDUM #4
5	12.19.23	ADDENDUM #5
6	03.08.24	CITY COMMENTS

SHEET INFORMATION

PROJECT NO.  
23034

DATE ISSUED  
MARCH 8, 2024

SHEET NAME

IRRIGATION NOTES, LEGEND & CALCS

SHEET NUMBER  
LI 1.0









03-08-2024

PROJECT

LOVES  
S PRESA ST

PROJECT ADDRESS

9530 SOUTHTON RD  
SAN ANTONIO, TX 78223

OWNER | CLIENT

LOVES

10601 N PENNSYLVANIA AVE  
OKLAHOMA CITY, OK

OWNER'S REPRESENTATIVE

BRAD PECK

295.475.5803  
Brad.Peck@loves.com

SUBCONSULTANT

ISSUE SETS

NO.	DATE	DESCRIPTION
1	10.23.23	ADDENDUM #1
4	12.12.23	ADDENDUM #4
5	12.19.23	ADDENDUM #5
6	03.08.24	CITY COMMENTS

SHEET INFORMATION

PROJECT NO.

23034

DATE ISSUED

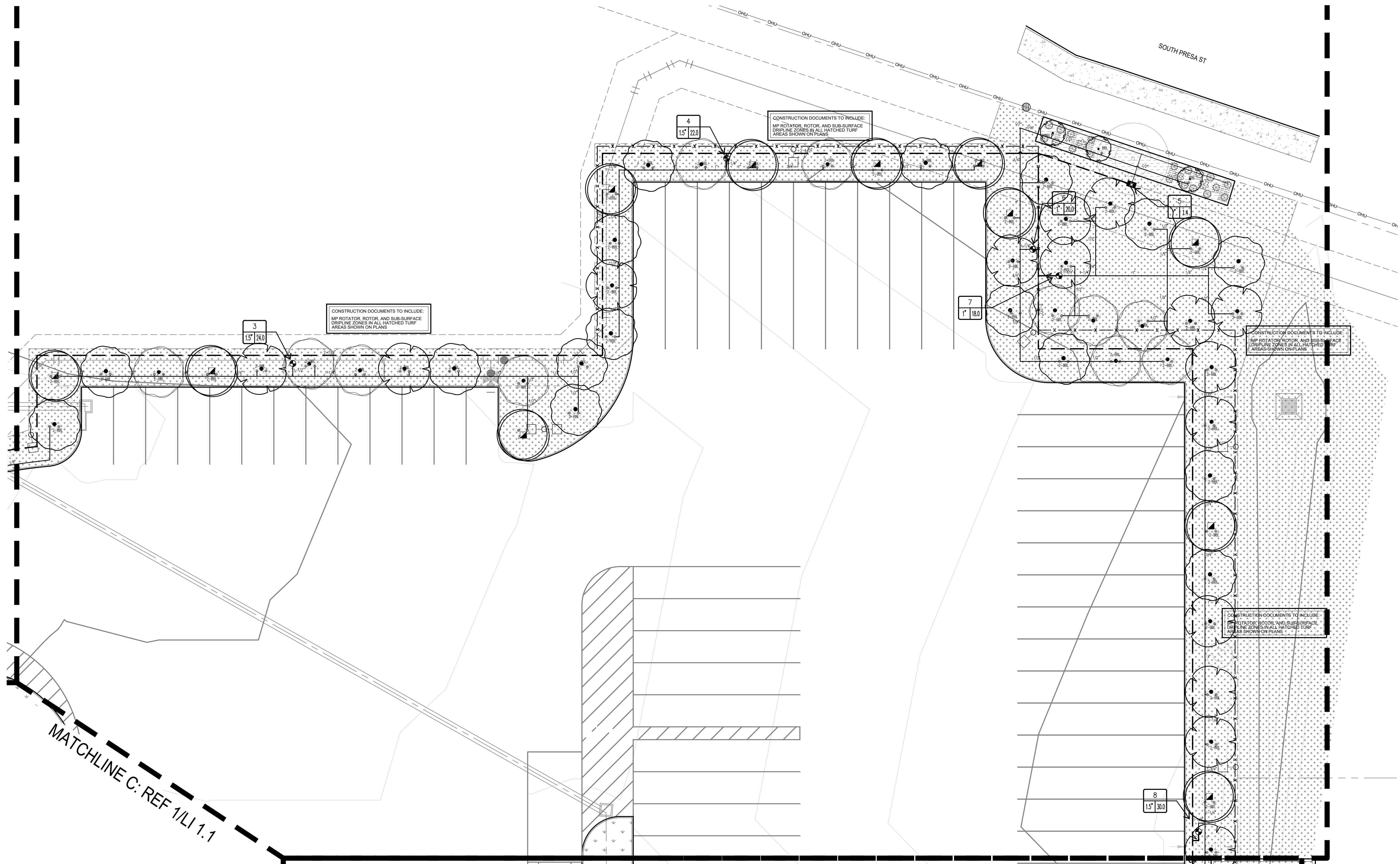
MARCH 8, 2024

SHEET NAME

IRRIGATION PLAN

SHEET NUMBER

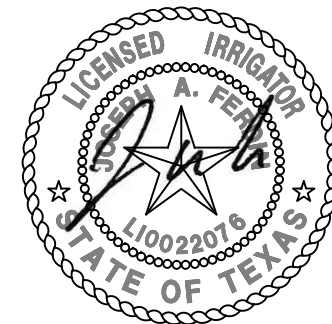
LI 1.2



1 IRRIGATION  
PLAN

0 5 10 20 40  
SCALE: 1"=20'





03-08-2024

PROJECT

LOVES  
S PRESA ST

PROJECT ADDRESS

9530 SOUTHTON RD  
SAN ANTONIO, TX 78223

OWNER | CLIENT

LOVES

10601 N PENNSYLVANIA AVE  
OKLAHOMA CITY, OK

OWNER'S REPRESENTATIVE

BRAD PECK

295.475.5803  
Brad.Peck@loves.com

SUBCONSULTANT

ISSUE SETS

NO.	DATE	DESCRIPTION
1	10.23.23	ADDENDUM #1
4	12.12.23	ADDENDUM #4
5	12.19.23	ADDENDUM #5
6	03.08.24	CITY COMMENTS

SHEET INFORMATION

PROJECT NO.

23034

DATE ISSUED

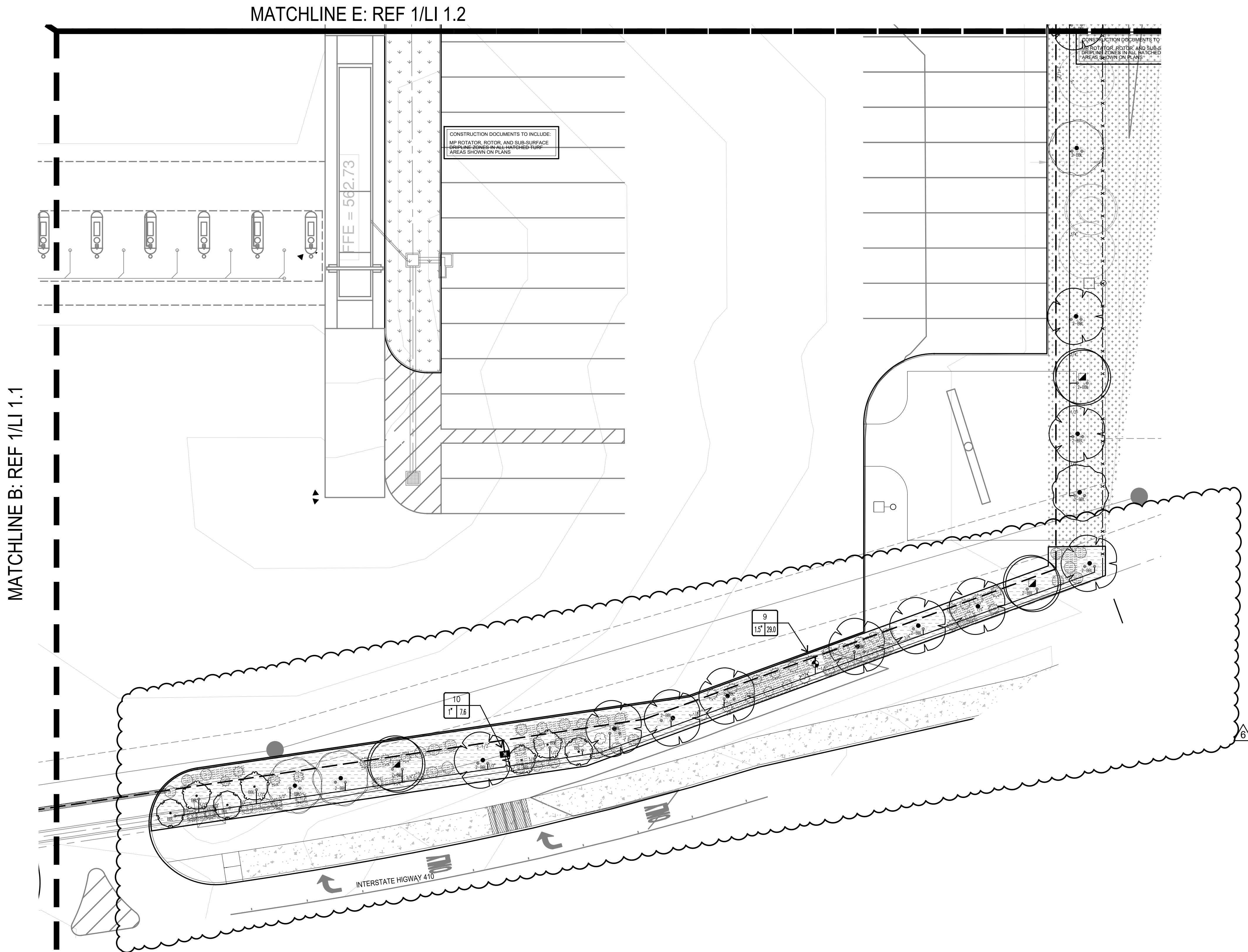
MARCH 8, 2024

SHEET NAME

IRRIGATION PLAN

SHEET NUMBER

LI 1.3



1 IRRIGATION  
PLAN



SCALE: 1"=20'







03-08-2024

PROJECT

LOVES  
S PRESA ST

PROJECT ADDRESS

9530 SOUTHTON RD  
SAN ANTONIO, TX 78223

OWNER | CLIENT

LOVES

10601 N PENNSYLVANIA AVE  
OKLAHOMA CITY, OK

OWNER'S REPRESENTATIVE

BRAD PECK

295.475.5803  
Brad.Peck@loves.com

SUBCONSULTANT

ISSUE SETS

NO.	DATE	DESCRIPTION
1	10.23.23	ADDENDUM #1
4	12.12.23	ADDENDUM #4
5	12.19.23	ADDENDUM #5
6	03.08.24	CITY COMMENTS

SHEET INFORMATION

PROJECT NO.

23034

DATE ISSUED

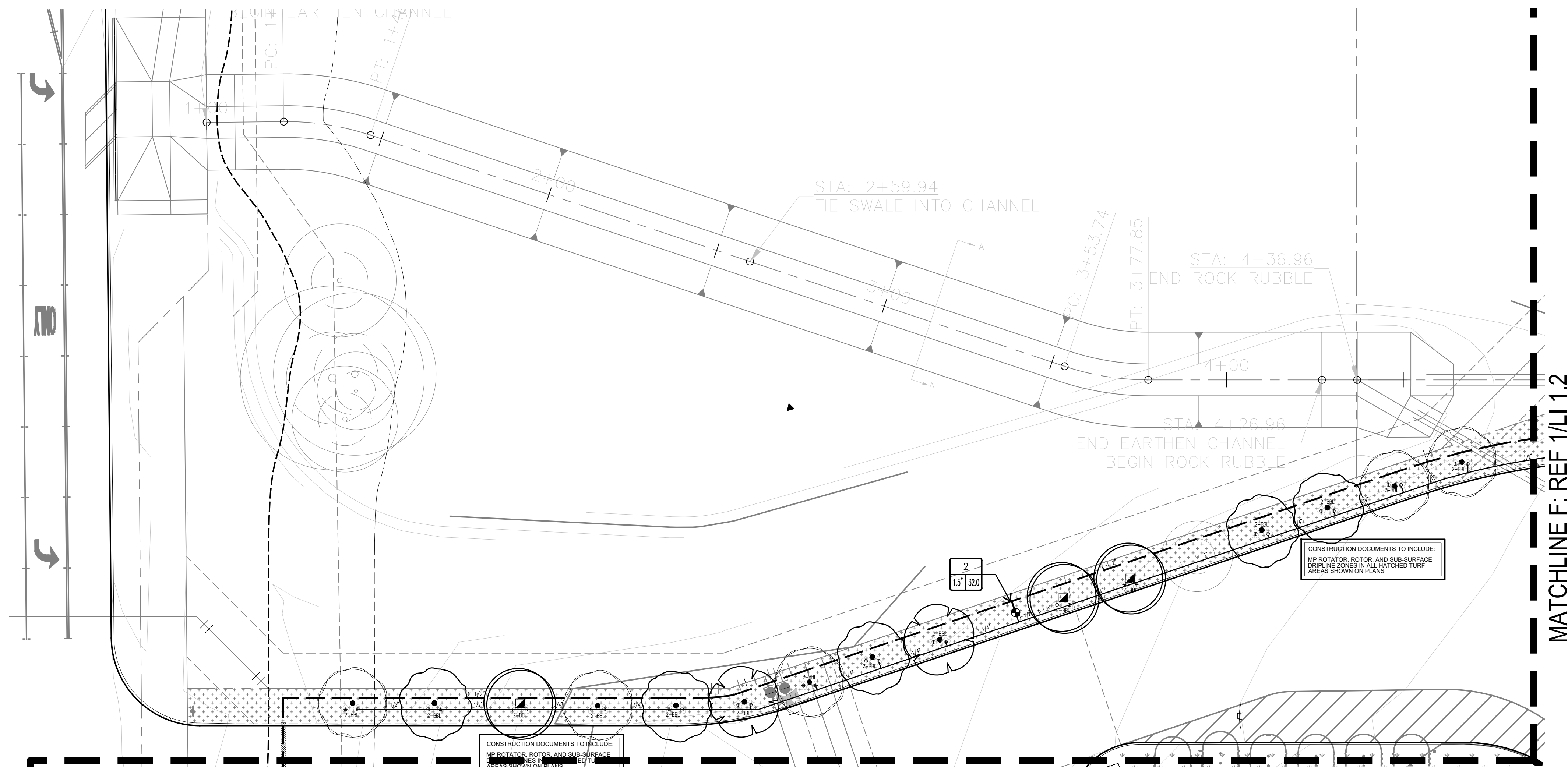
MARCH 8, 2024

SHEET NAME

IRRIGATION PLAN

SHEET NUMBER

LI 1.4



1 IRRIGATION  
PLAN

MATCHLINE C: REF 1/LI 1.1

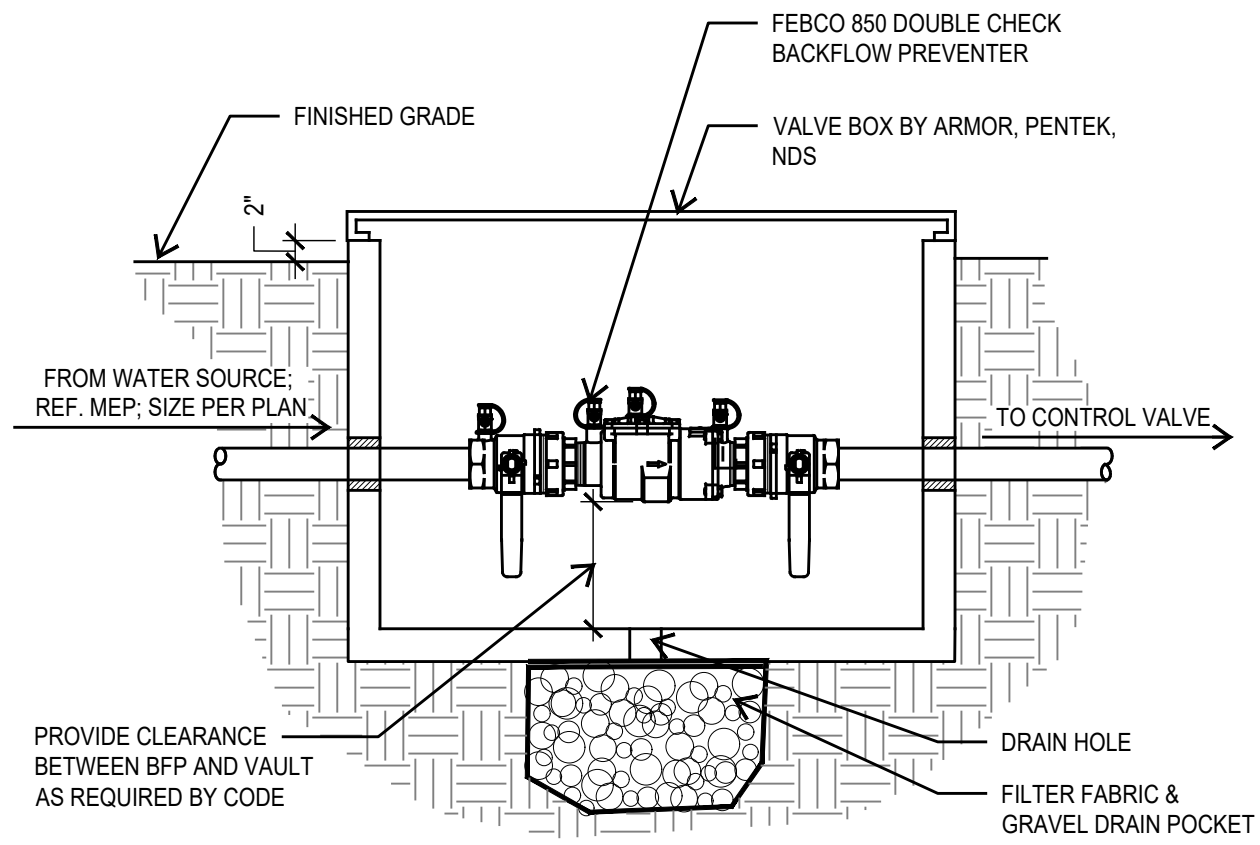
MATCHLINE F: REF 1/LI 1.2

0 5' 10' 20' 40'

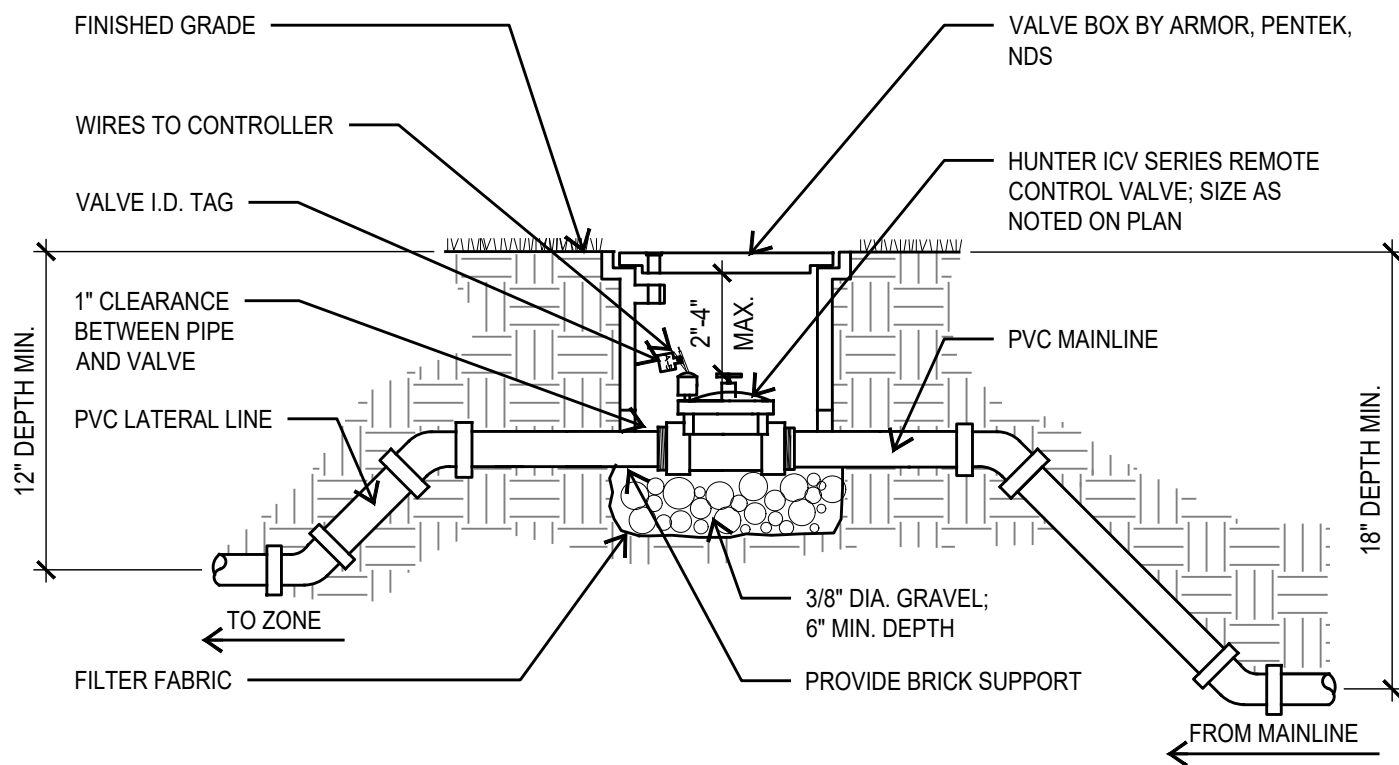
SCALE: 1"=20'



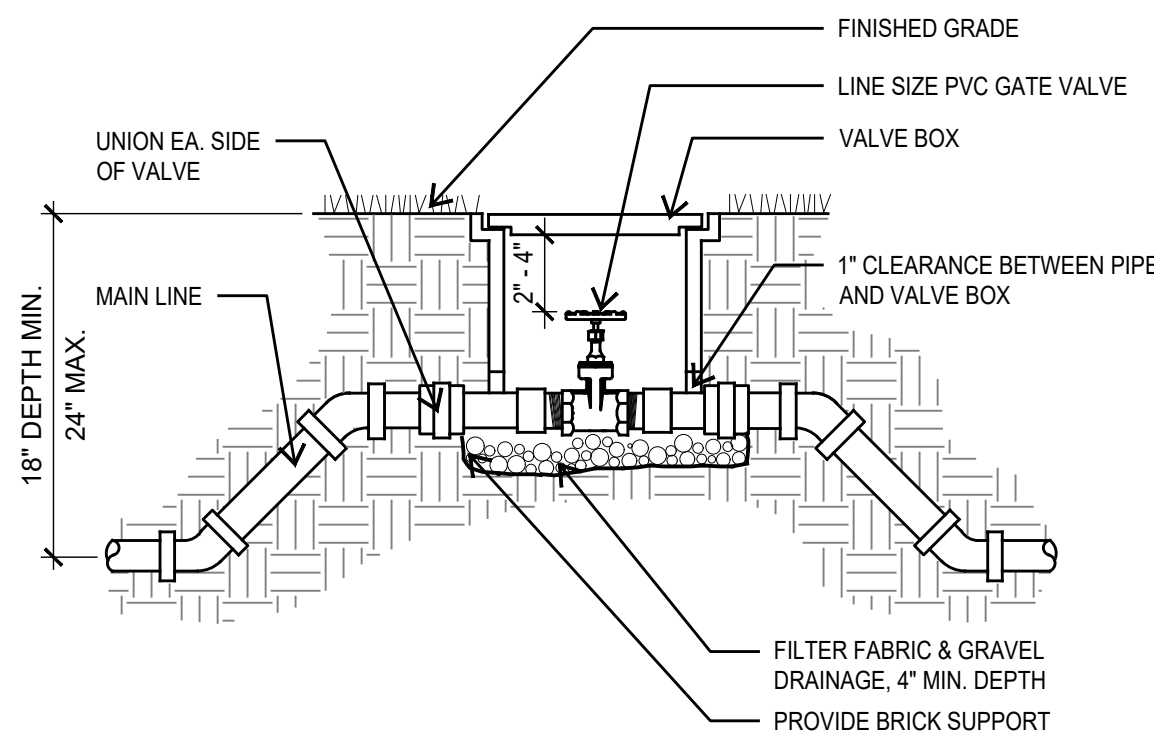




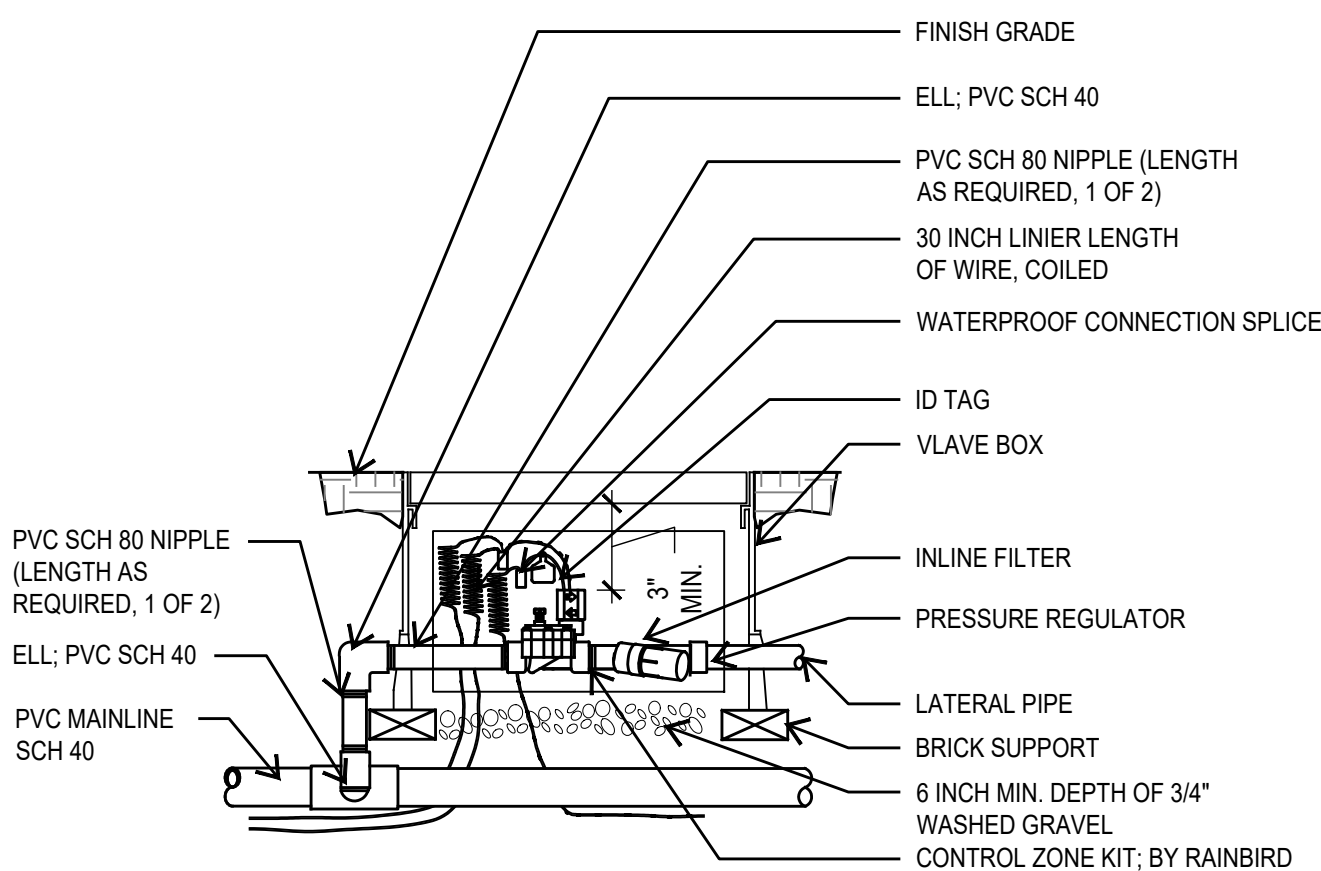
1 **BACKFLOW DEVICE**  
SECTION NOT TO SCALE



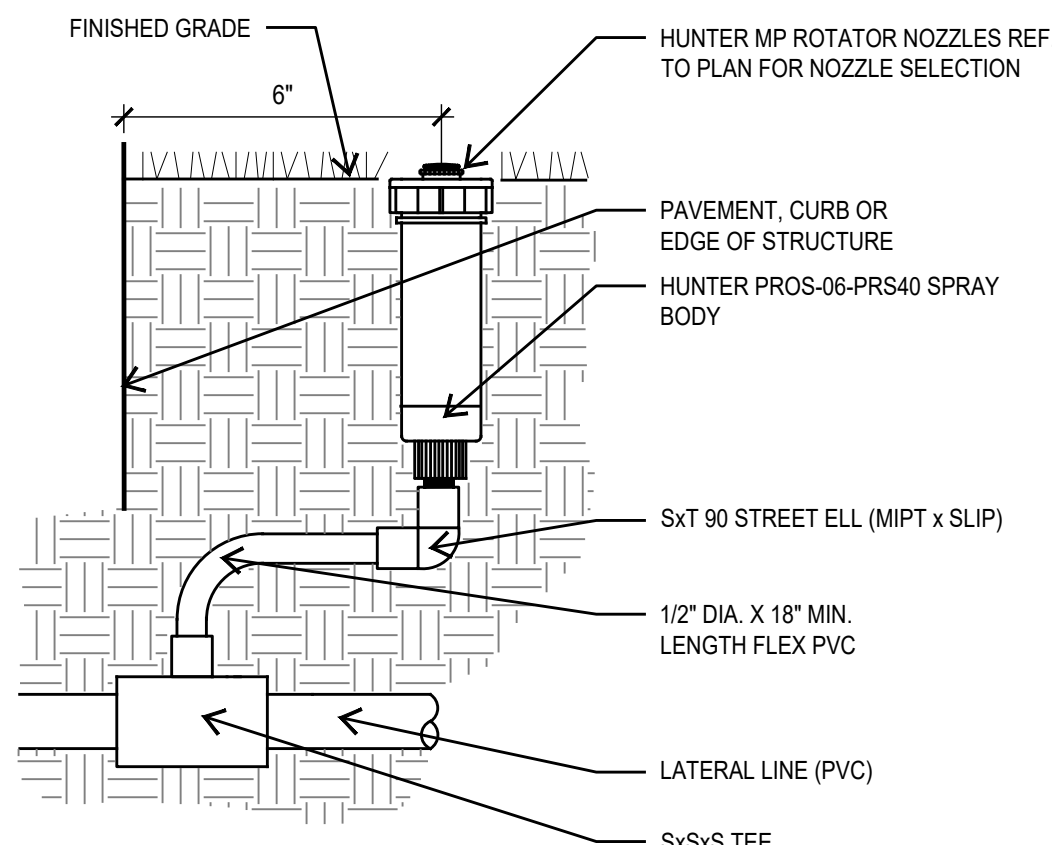
2 **ZONE VALVE**  
SECTION NOT TO SCALE



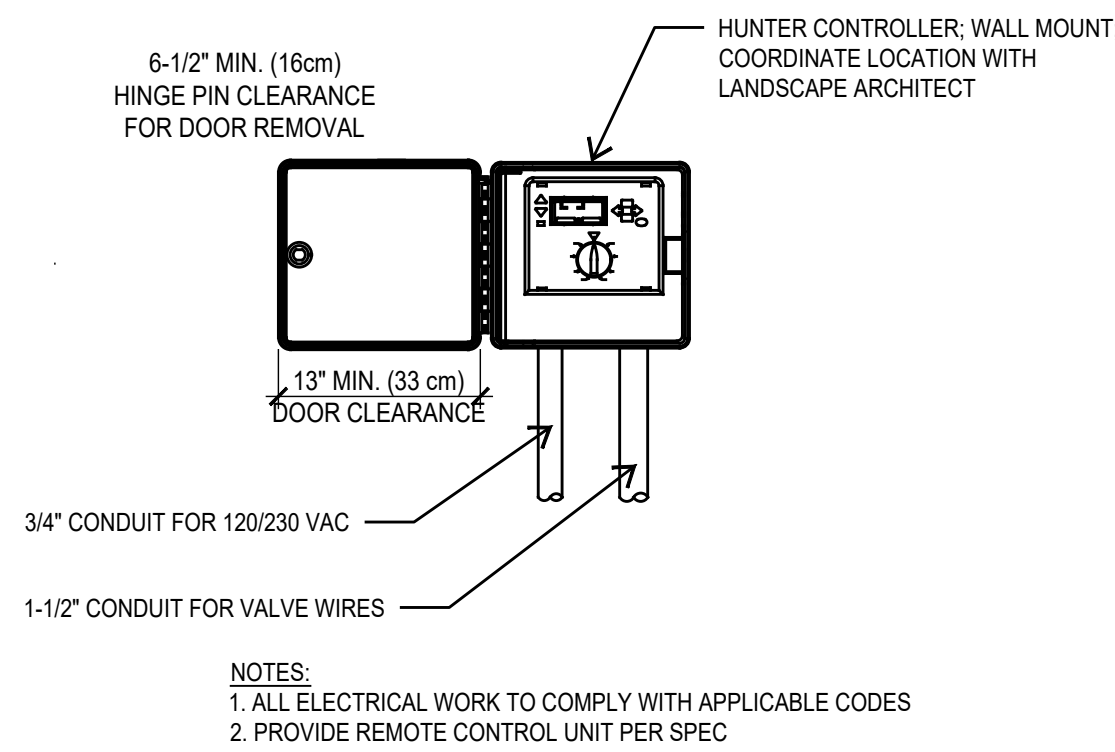
3 **MANUAL ISOLATION VALVE**  
SECTION NOT TO SCALE



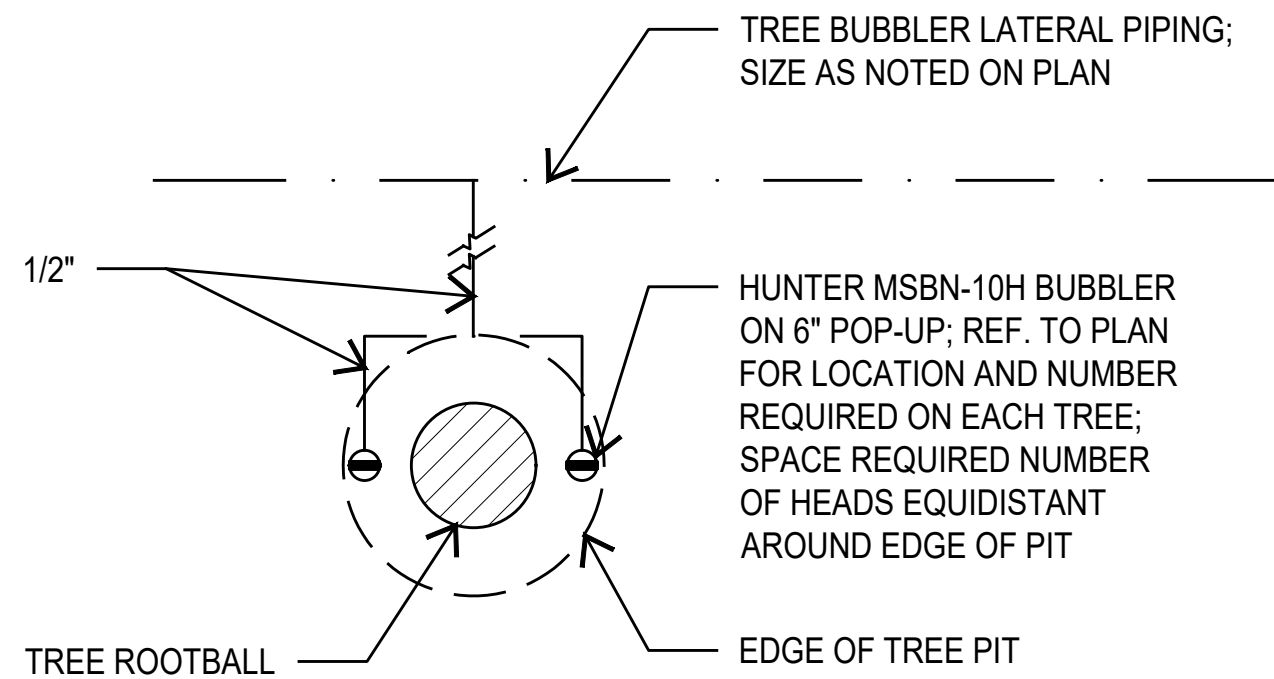
4 **DRIP CONTROL ZONE KIT**  
SECTION NOT TO SCALE



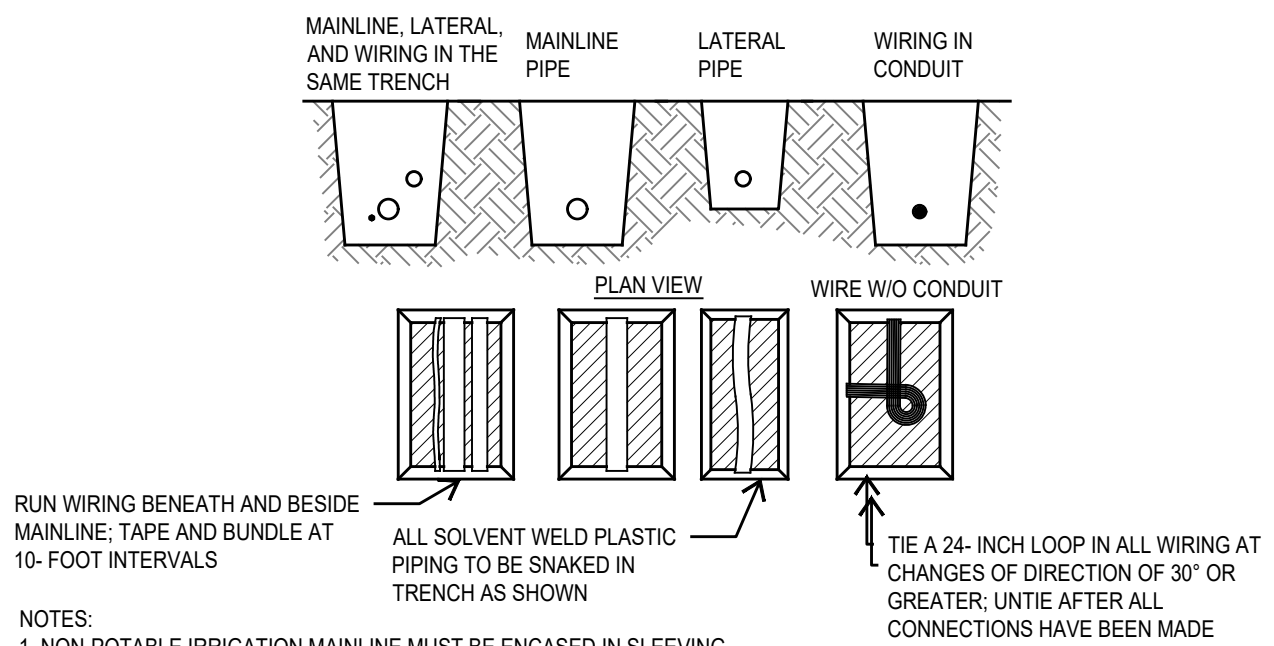
5 **MP ROTATOR ON POP-UP DETAIL**  
SECTION NOT TO SCALE



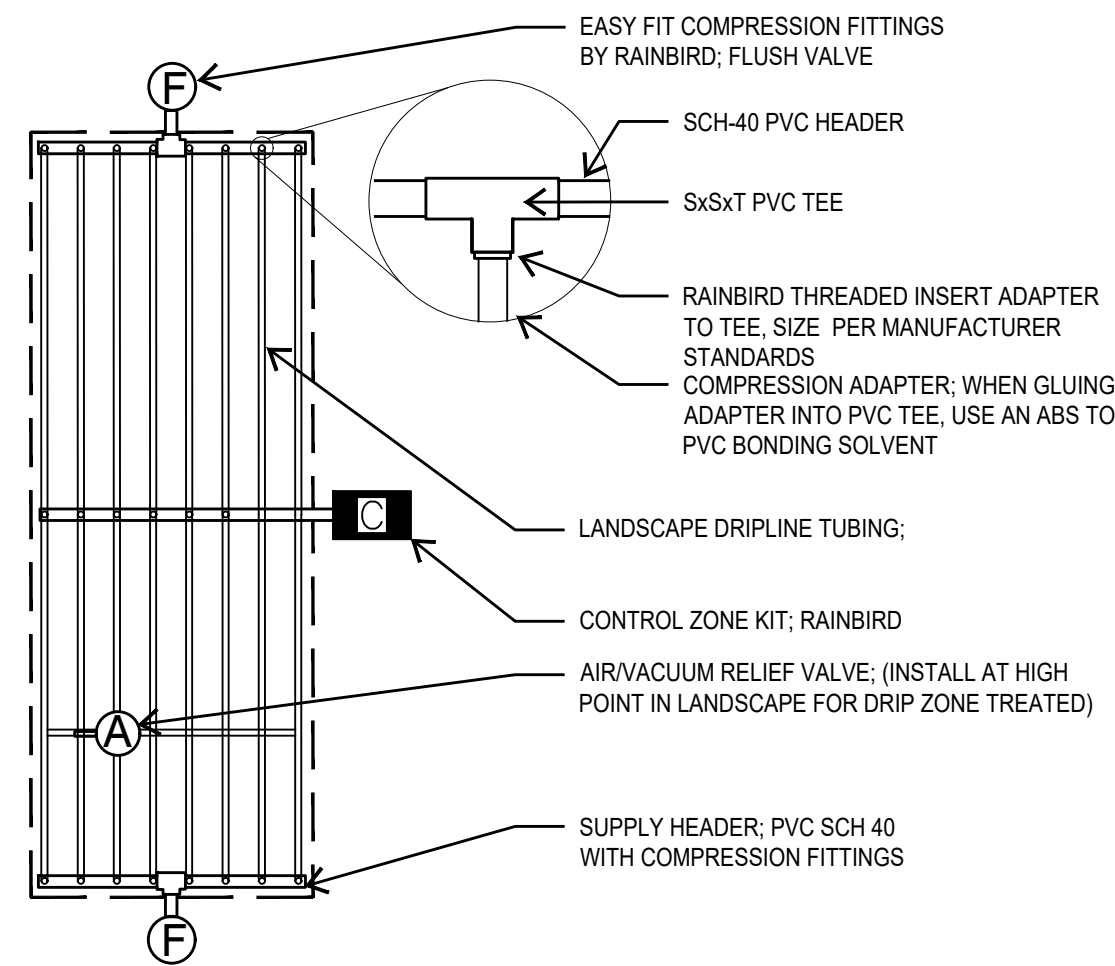
6 **IRRIGATION CONTROLLER**  
SECTION NOT TO SCALE



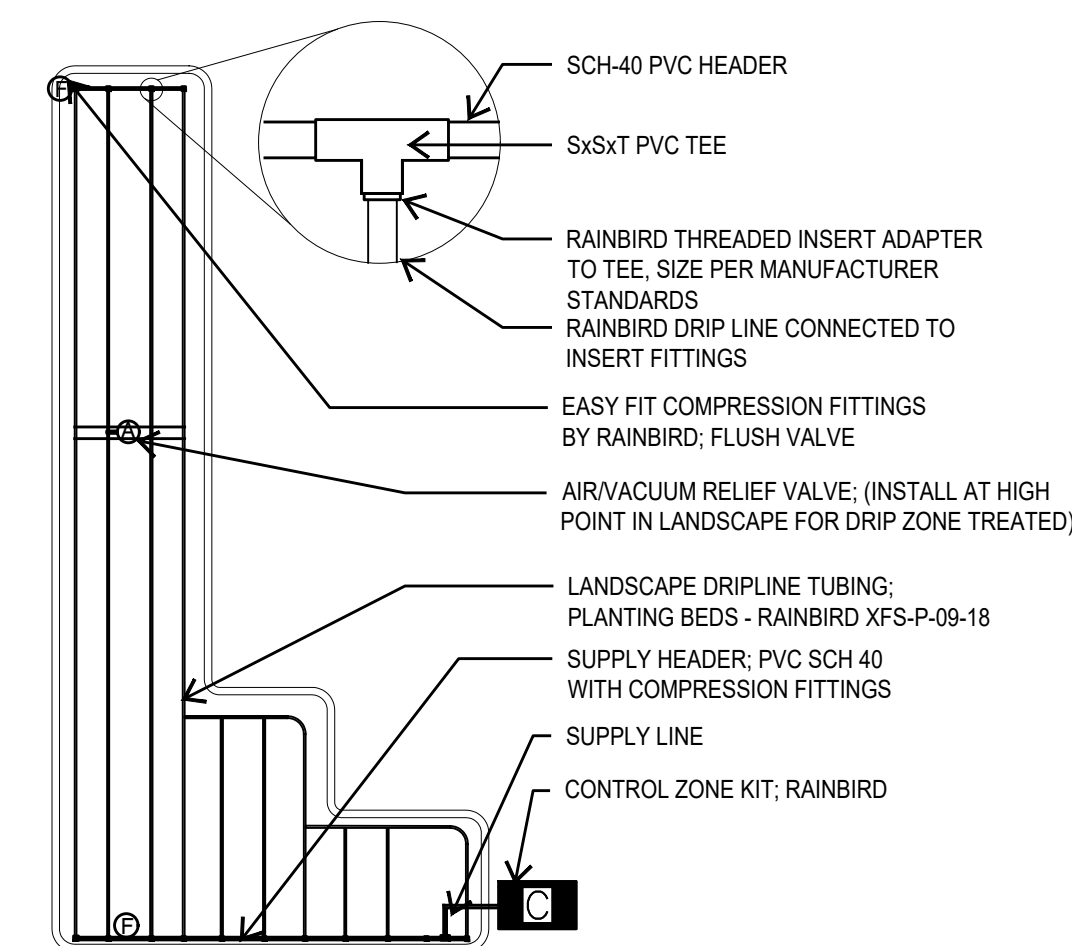
7 **TREE BUBBLER ASSEMBLY**  
SECTION NOT TO SCALE



8 **IRRIGATION TRENCH**  
SECTION NOT TO SCALE



9 **DRIPLINE (CENTER FEED)**  
SECTION NOT TO SCALE



10 **DRIPLINE (END FEED)**  
SECTION NOT TO SCALE

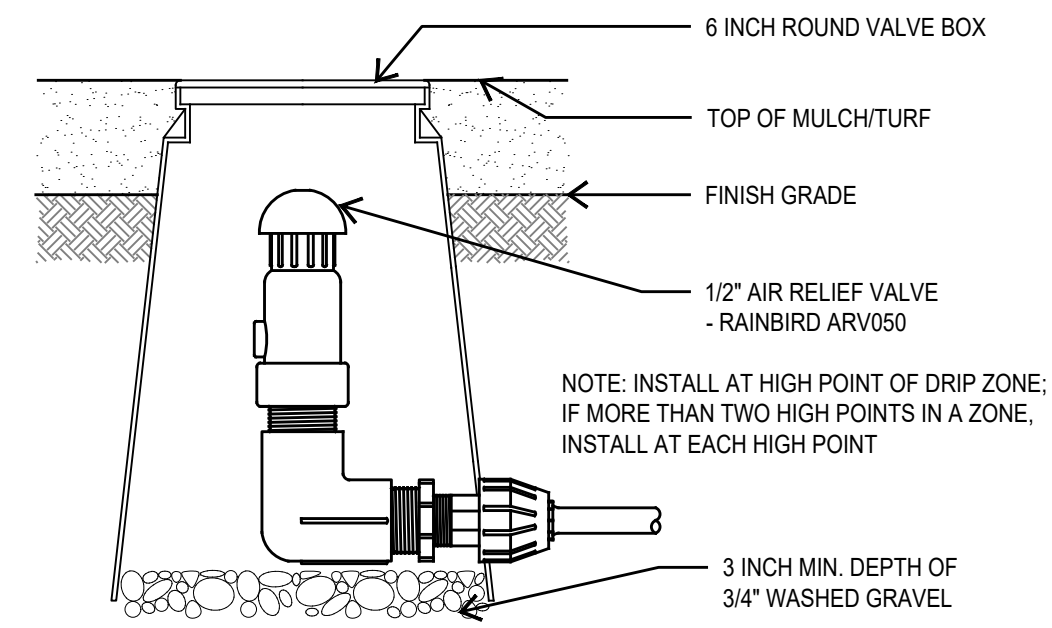
PROPER SIZING OF SUPPLY AND EXHAUST HEADERS

TOTAL ZONE FLOW	PIPE SIZE
UP TO 5 GPM	1/2" SCH 40 PVC OR 1/2" CLASS 315 PVC
5.1 TO 8 GPM	3/4" CLASS 200 PVC
8.1 TO 13 GPM	1" CLASS 200 PVC
13 GPM TO 22 GPM	1 1/4" CLASS 200 PVC
22.1 TO 31 GPM	1 1/2" CLASS 200 PVC

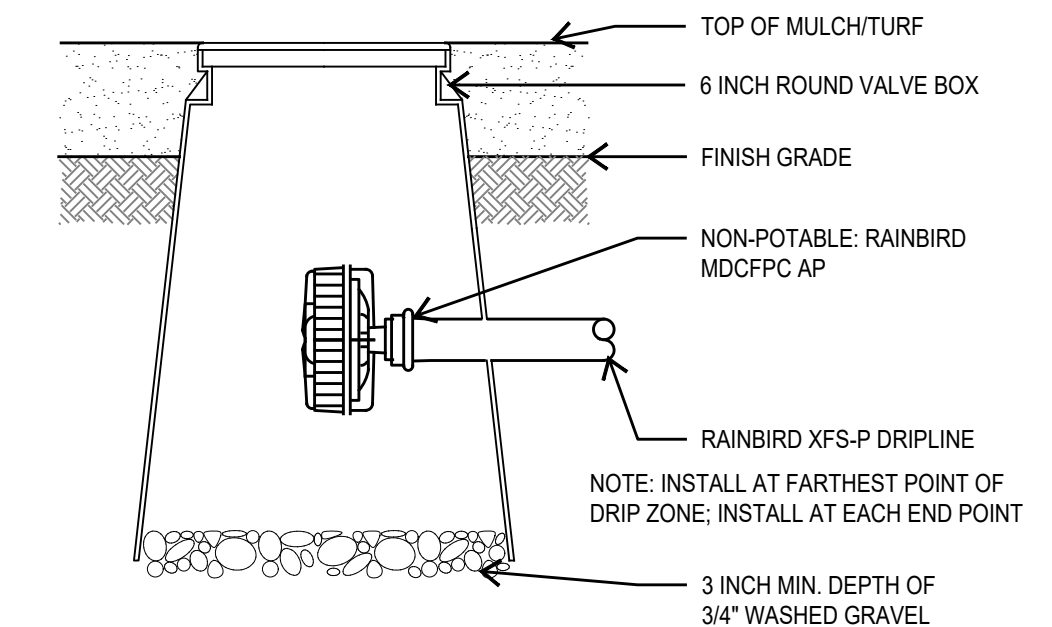
NOTE: A 45 PSI PRESSURE REGULATOR IS RECOMMENDED TO OBTAIN MAXIMUM RUN LENGTHS AND MAXIMIZE ZONE SIZE WHEN INSTALLING XF SERIES DRIPLINE

#### DRIP IRRIGATION DESIGN NOTES

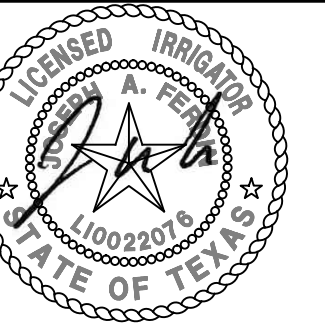
- DRIPLINE SHALL BE BURIED 3" TO 5" BELOW FINISHED SOIL GRADE IN PLANTING BEDS AFTER PLANTING AND BEFORE MULCH AND 4" TO 6" BELOW FINISHED GRADE IN TURF AREAS.
- ALL DRIPLINE SHALL BE SECURED USING SOIL STAPLES AS SUPPLIED BY THE MANUFACTURER SPACED A MAXIMUM OF 3' ON CENTER.
- DRIP LATERALS SHOWN ON THE PLANS ARE USED TO INDICATE ZONING SIZES AND RELATIONSHIPS. INSTALLATION OF DRIP ZONES SHALL FOLLOW ONE OF THE TWO METHODS DESCRIBED IN DETAILS 10/11 LI 2.2. AND RAINBIRD'S RECOMMENDED INSTALLATION SPECIFICATIONS.
- RAINBIRD XFS SERIES DRIPLINE SHALL BE USED AS FOLLOWS; TURF AREAS - XFS-06-12 AND BED AREAS - XFS-09-12. IN BED AREAS WITH A SLOPE OF 3:1 OR MORE USE RAINBIRD XFCV-06-18.
- WHEN CONFLICTS OCCUR BETWEEN THESE DRAWINGS AND THE MANUFACTURER'S SPECIFICATIONS DEFER TO THE MANUFACTURER'S RECOMMENDED SPECIFICATIONS.
- EACH DRIP ZONE SHALL HAVE A DRIP SYSTEM OPERATION INDICATOR, RAINBIRD MODEL OPERIND. INSTALL PER RAINBIRD RECOMMENDATIONS.



11 **AIR RELIEF VALVE**  
SECTION NOT TO SCALE



12 **FLUSH VALVE**  
SECTION NOT TO SCALE



03-08-2024

#### PROJECT

### LOVES S PRESA ST

#### PROJECT ADDRESS

9530 SOUTHTON RD  
SAN ANTONIO, TX 78223

#### OWNER | CLIENT

#### LOVES

10601 N PENNSYLVANIA AVE  
OKLAHOMA CITY, OK

#### OWNER'S REPRESENTATIVE

#### BRAD PECK

295.475.5803  
Brad.Peck@loves.com

#### SUBCONSULTANT

#### REVISIONS

NO.	DATE	DESCRIPTION
1	10.23.23	ADDENDUM #1
4	12.12.23	ADDENDUM #4
5	12.19.23	ADDENDUM #5
6	03.08.24	CITY COMMENTS

#### ISSUE SETS

NO.	DATE	DESCRIPTION
1	10.23.23	ADDENDUM #1
4	12.12.23	ADDENDUM #4
5	12.19.23	ADDENDUM #5
6	03.08.24	CITY COMMENTS

#### SHEET INFORMATION

#### PROJECT NO.

23034

#### DATE ISSUED

MARCH 8, 2024

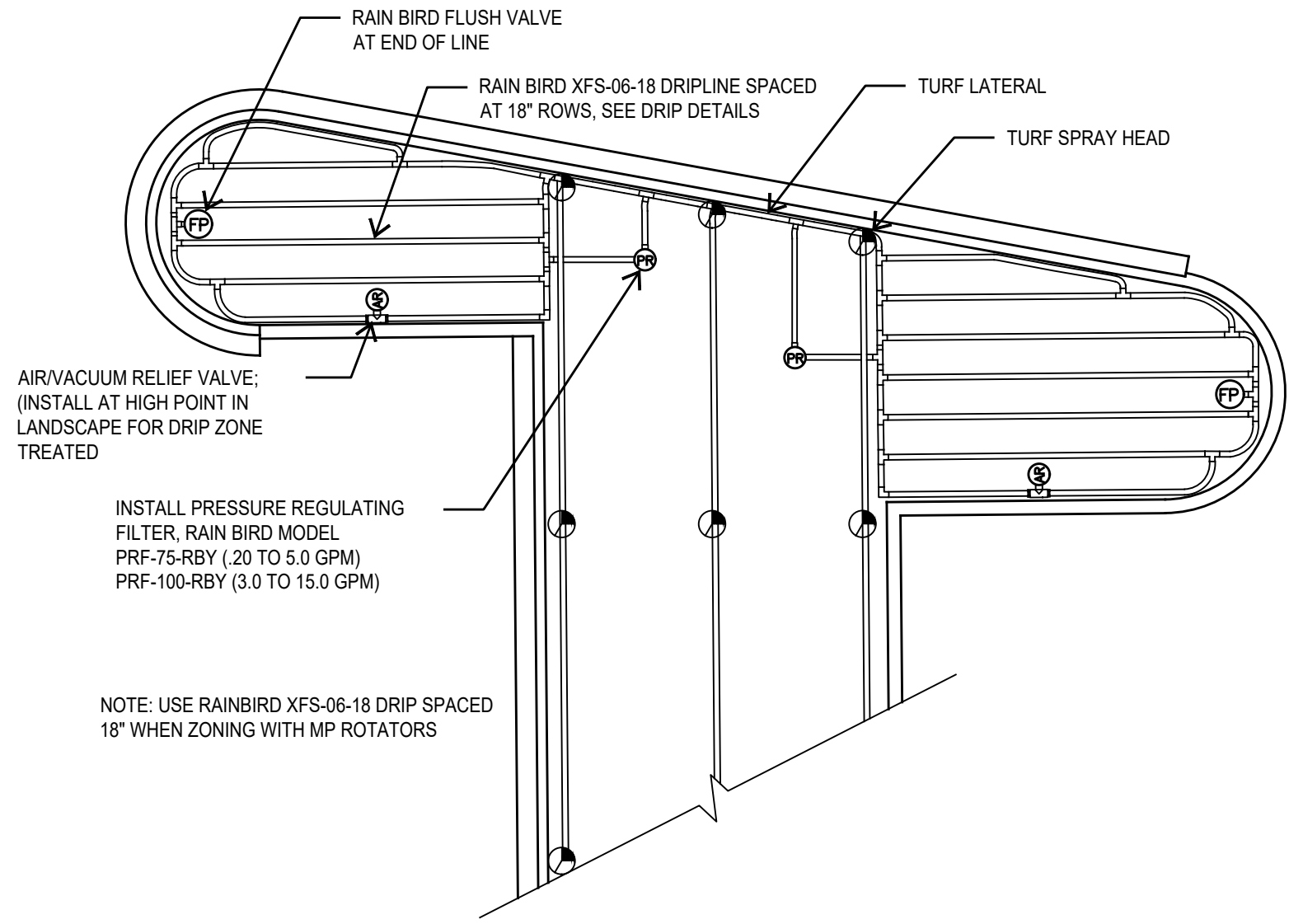
#### SHEET NAME

#### IRRIGATION DETAILS

#### SHEET NUMBER

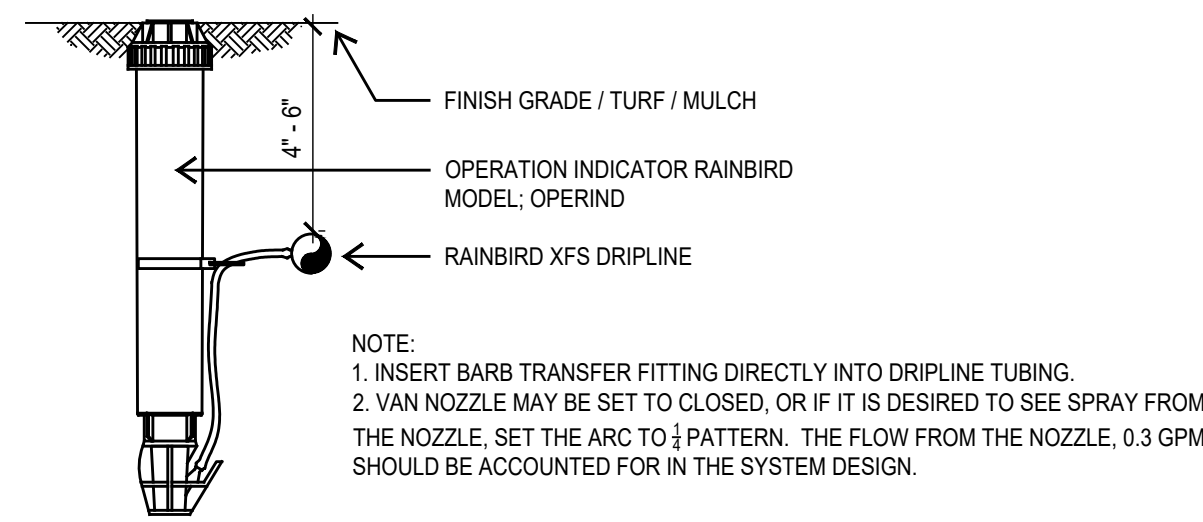
LI 2.1





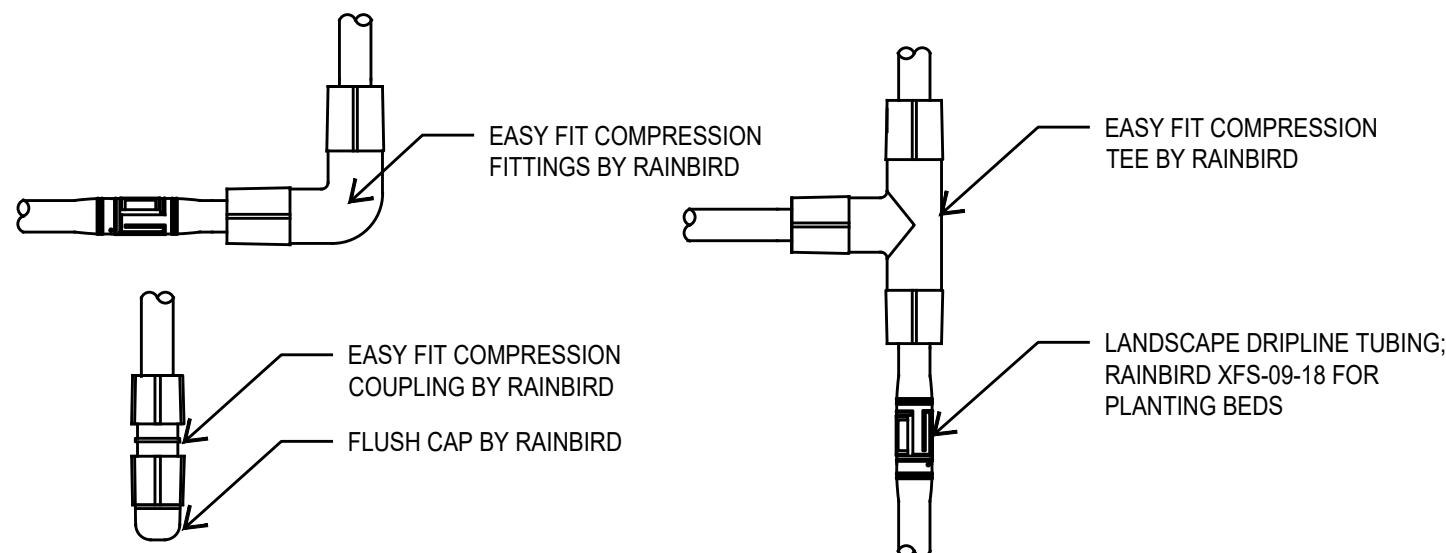
## 1 TURF DRIP WITH MP ROTATORS

SECTION NOT TO SCALE



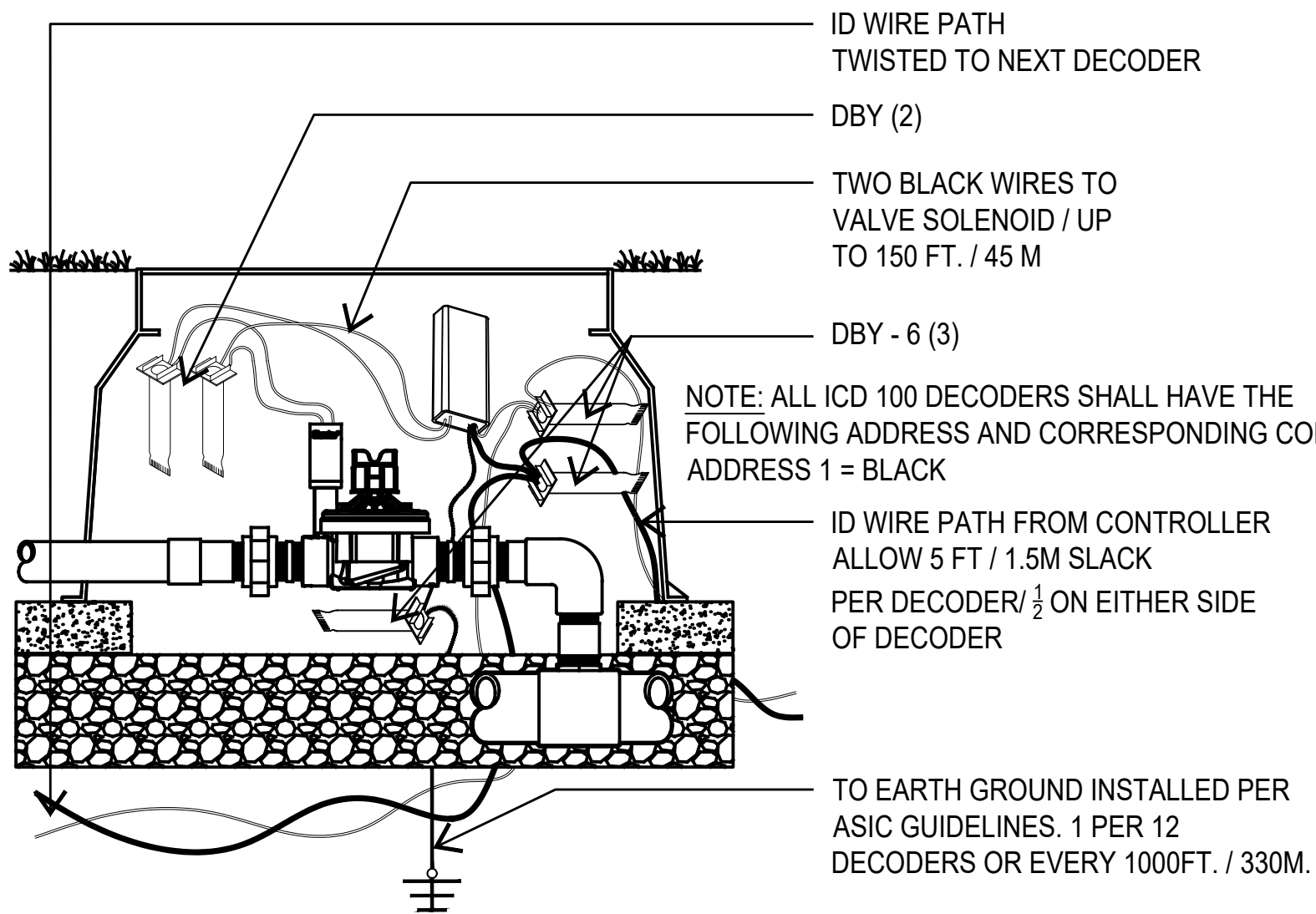
## 2 DRIP OPERATION INDICATOR

SECTION NOT TO SCALE



## 3 DRIPLINE FITTINGS

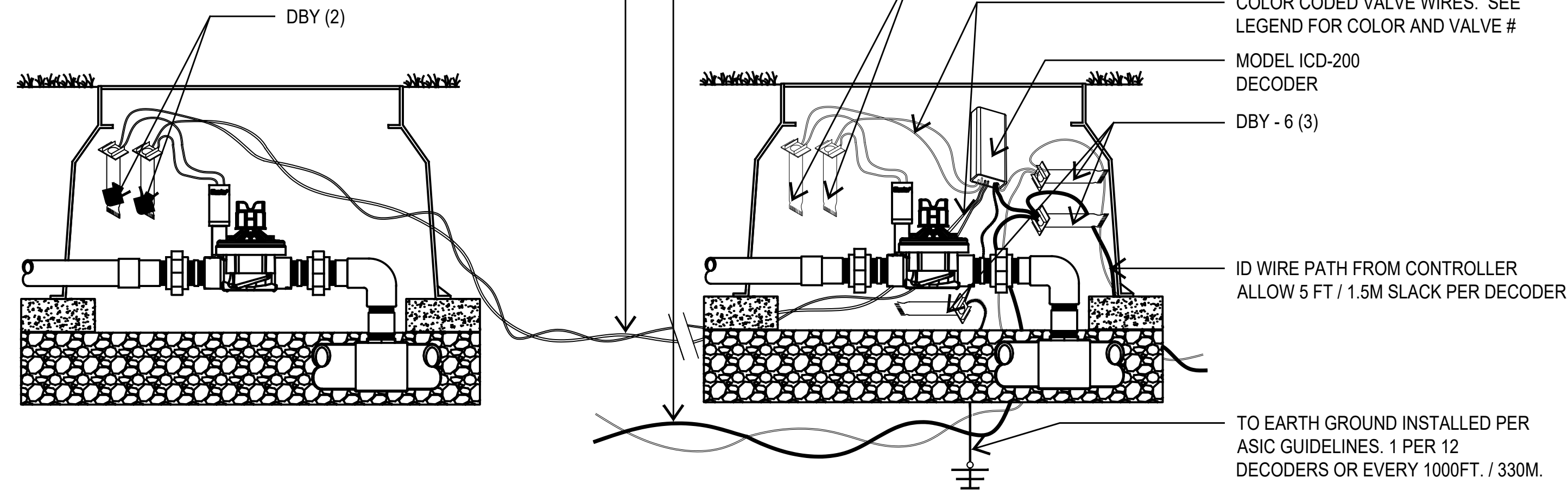
SECTION NOT TO SCALE



## 4 HUNTER ICD 100 DECODER

SECTION NOT TO SCALE

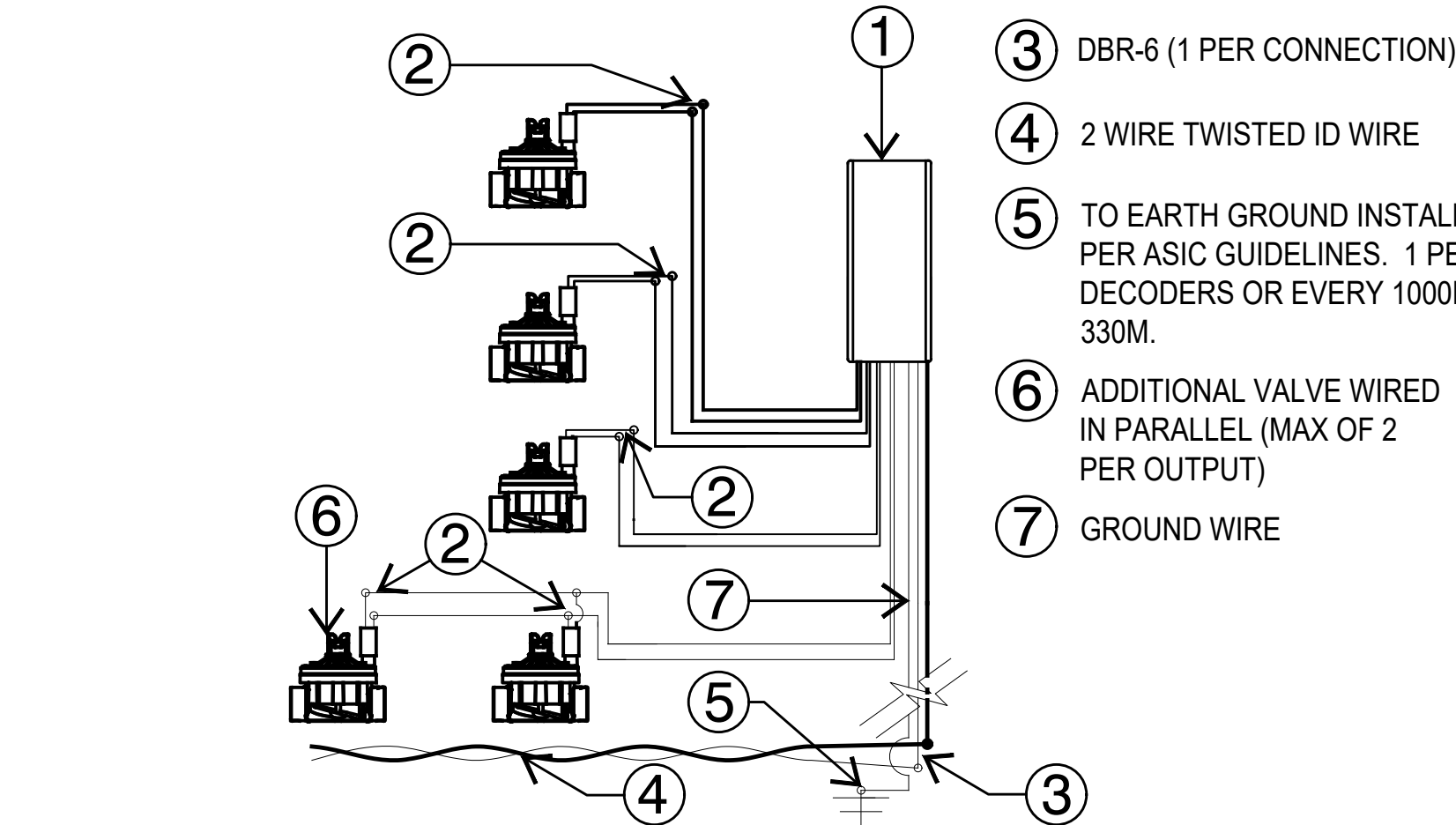
NOTE: ALL ICD-200 DECODERS SHALL HAVE THE FOLLOWING ADDRESS AND CORRESPONDING COLOR  
ADDRESS 1 = BLACK  
ADDRESS 2 = YELLOW



## 5 HUNTER ICD 200 DECODER

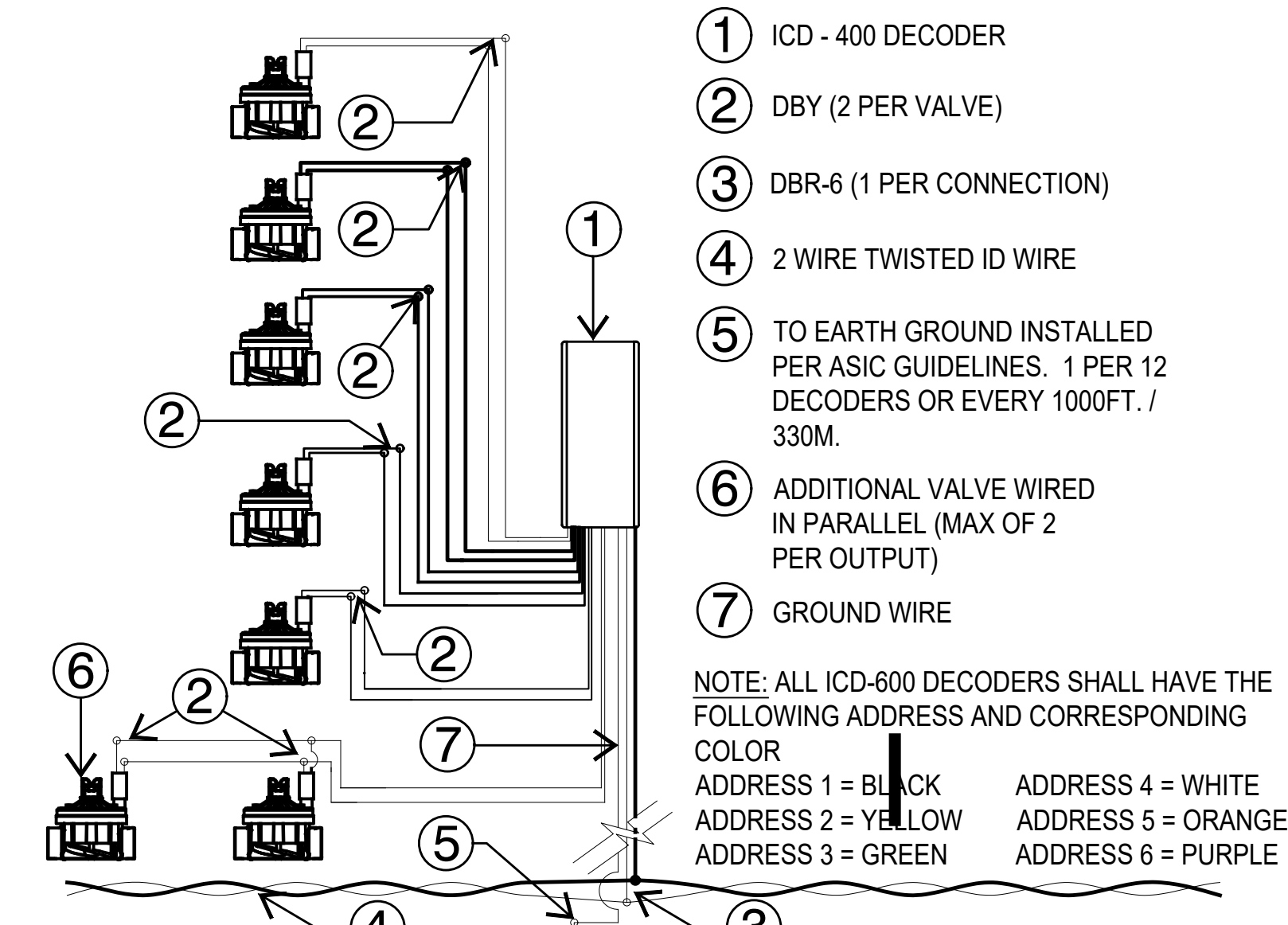
SECTION NOT TO SCALE

NOTE: ALL ICD 400 DECODERS SHALL HAVE THE FOLLOWING ADDRESS AND CORRESPONDING COLOR  
ADDRESS 1 = BLACK  
ADDRESS 2 = YELLOW  
ADDRESS 3 = GREEN  
ADDRESS 4 = WHITE



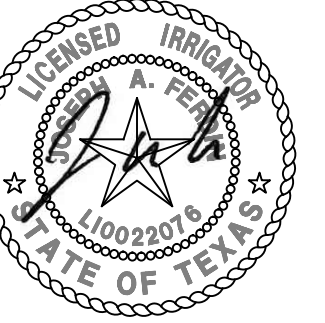
## 6 HUNTER ICD 400 DECODER

SECTION NOT TO SCALE



## 7 HUNTER ICD 600 DECODER

SECTION NOT TO SCALE



03-08-2024

### PROJECT

LOVES  
S PRESA ST

### PROJECT ADDRESS

9530 SOUTHTON RD  
SAN ANTONIO, TX 78223

### OWNER | CLIENT

LOVES  
10601 N PENNSYLVANIA AVE  
OKLAHOMA CITY, OK

### OWNER'S REPRESENTATIVE

BRAD PECK  
295.475.5803  
Brad.Peck@loves.com

### SUBCONSULTANT

### REVISIONS

NO.	DATE	DESCRIPTION
1	10.23.23	ADDENDUM #1
4	12.12.23	ADDENDUM #4
5	12.19.23	ADDENDUM #5
6	03.08.24	CITY COMMENTS

### ISSUE SETS

NO.	DATE	DESCRIPTION
1	10.23.23	ADDENDUM #1
4	12.12.23	ADDENDUM #4
5	12.19.23	ADDENDUM #5
6	03.08.24	CITY COMMENTS

### SHEET INFORMATION

PROJECT NO.	23034
DATE ISSUED	MARCH 8, 2024
SHEET NAME	

### IRRIGATION DETAILS

### SHEET NUMBER

LI 2.2