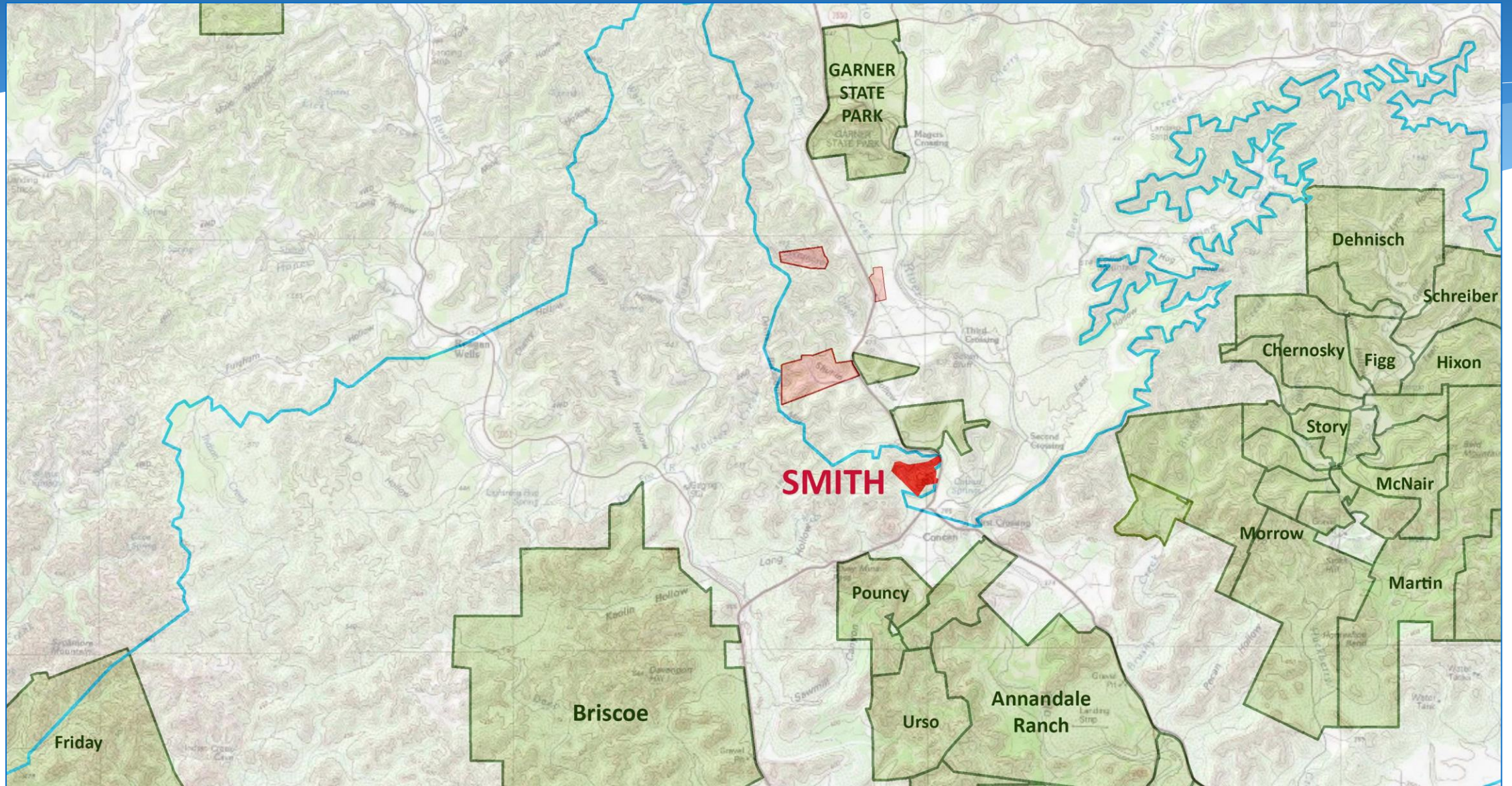




Roland Smith Ranch

Roland Smith Ranch (151.14 acres) Uvalde County



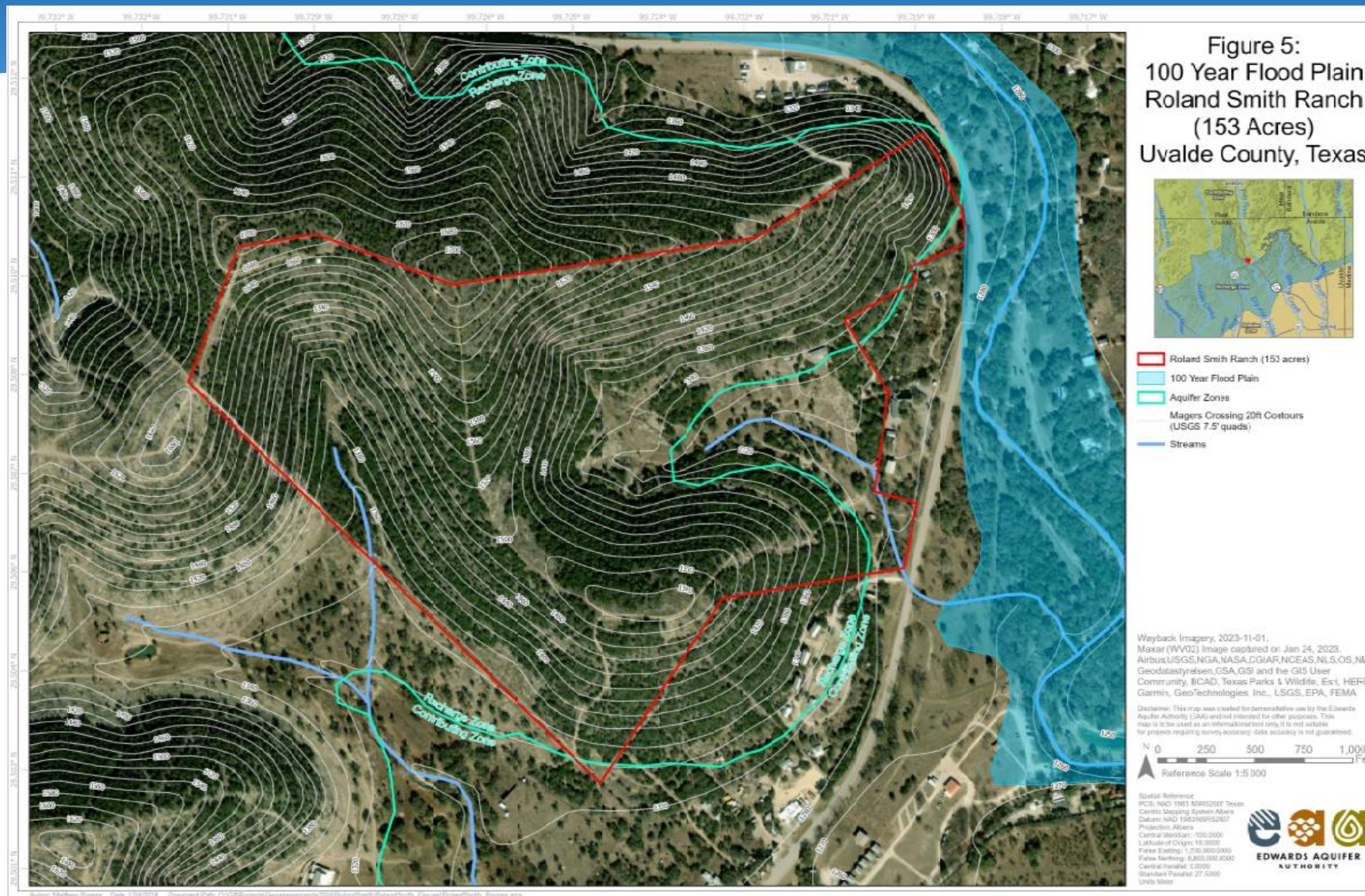
Roland Smith Ranch (151.14 Acres) Uvalde County

- Directly behind town of Concan
- Across Hwy 83 from Shut-in Creek Ranch conservation easement
- Appraisal completed; EAA ranked the property high for water quality and water quantity benefits
- Survey and environmental reports completed

➤ **Requesting Final Approval**



Roland Smith Ranch (151.14 Acres) Uvalde County



Roland Smith Ranch (151.14 Acres) Uvalde County

