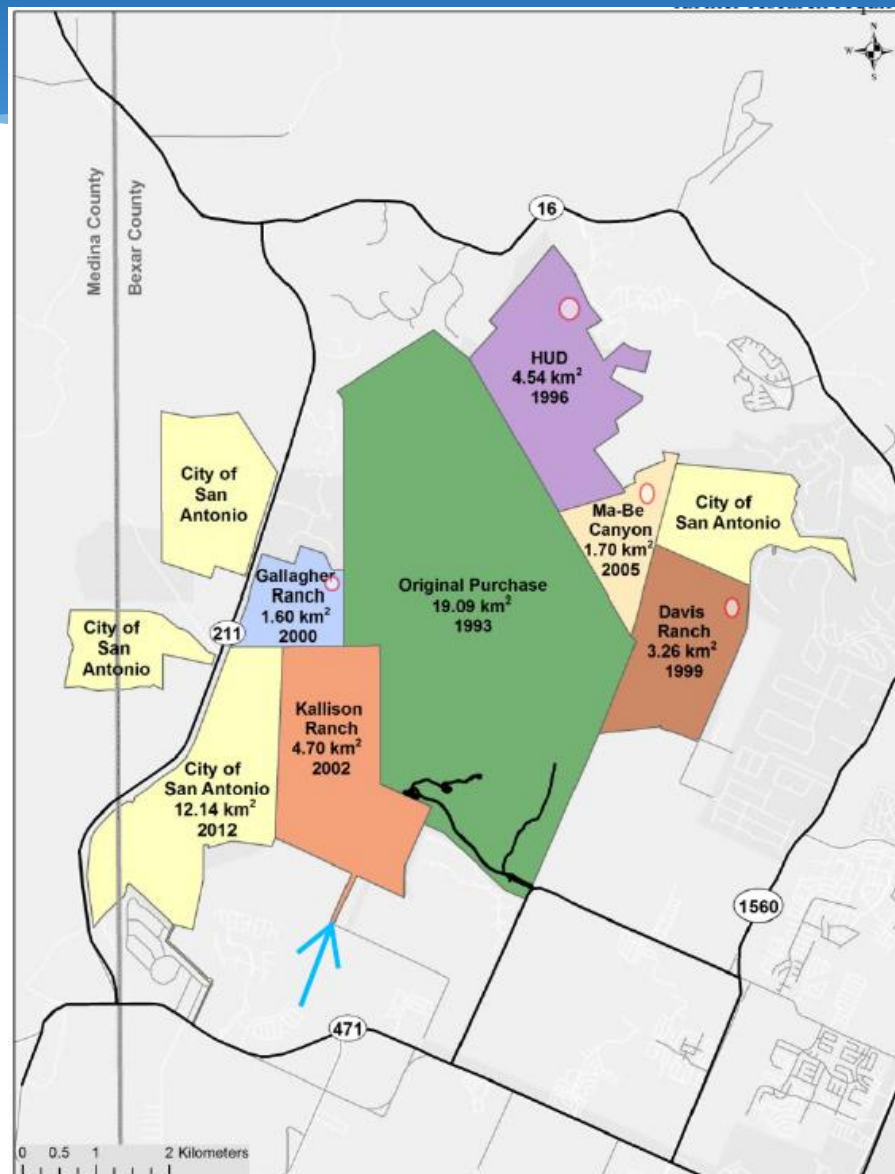




ESD 7/Kallison Ranch Land Swap Proposal

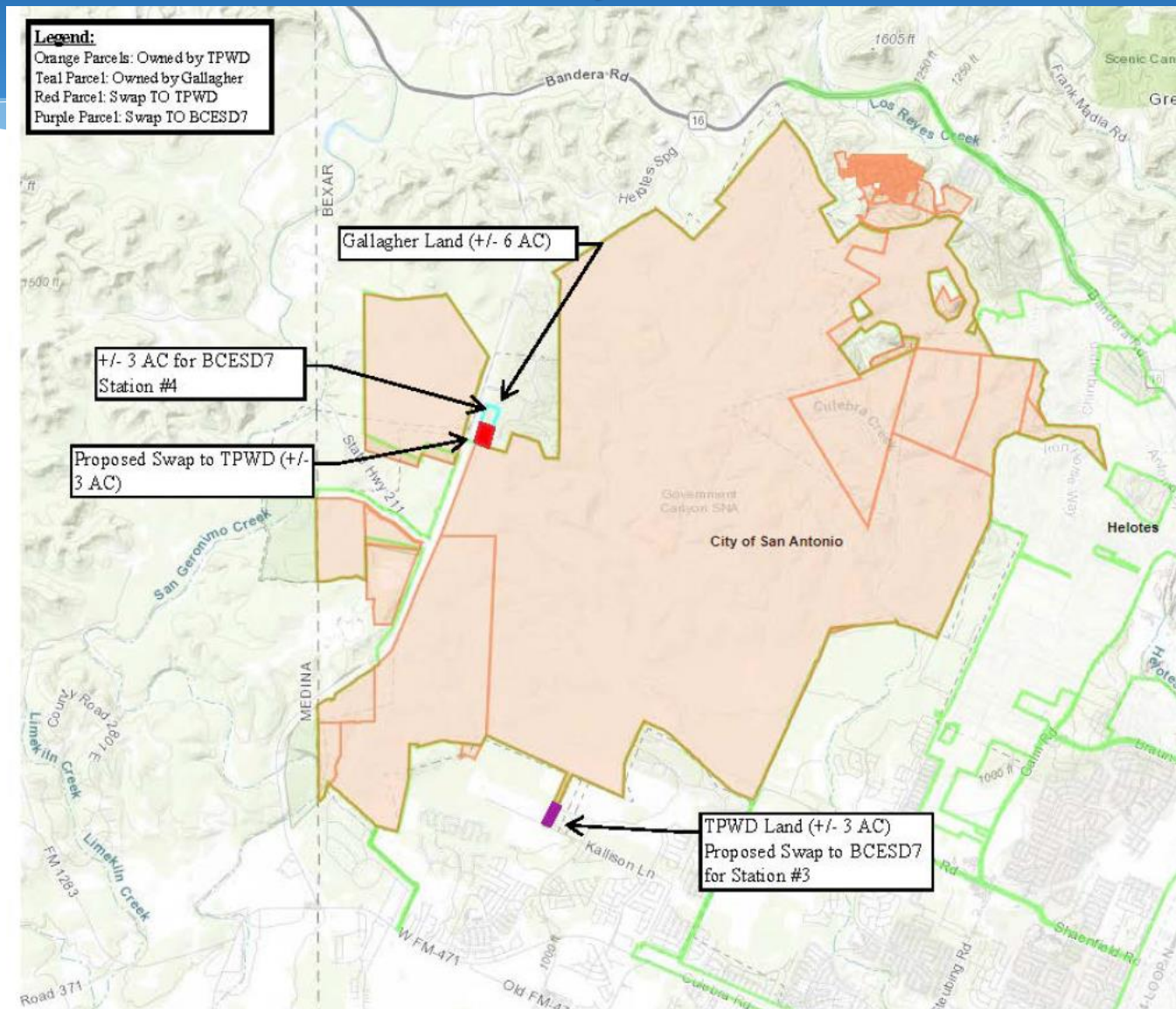
Babcock Road 165 Property

ESD 7/Kallison Ranch Land Swap(~3 acres) Bexar County

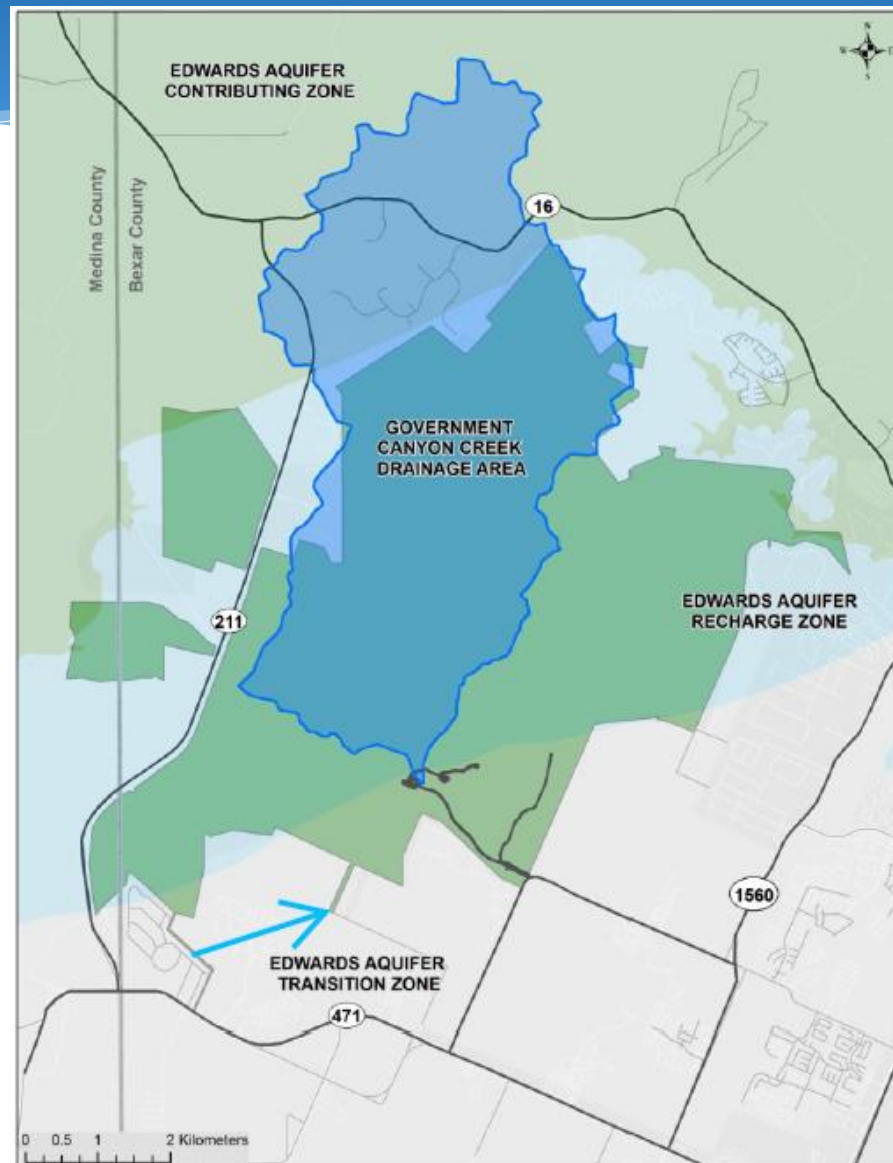


ESD 7/Kallison Ranch Land Swap (~3 acres) Bexar County

- Bexar County Emergency Services District 7 seeking to swap 3 acres of Kallison Ranch property at Government Canyon SNA
 - EAPP contributed \$2.9M in Prop 3 funds toward TPWD's acquisition of 1,164-acre Kallison Ranch in 2002; EAPP holds CE
 - ESD 7 to construct new fire station
- ESD 7 to convey 3 acres on Hwy 211 located in EARZ to TPWD
- TPWD to follow disposition process outlined in TPWD Chapters 13 and 26
- Proposed swap would require CAB and City Council approval to amend Kallison Ranch CE
- Requesting Stage 1 consideration

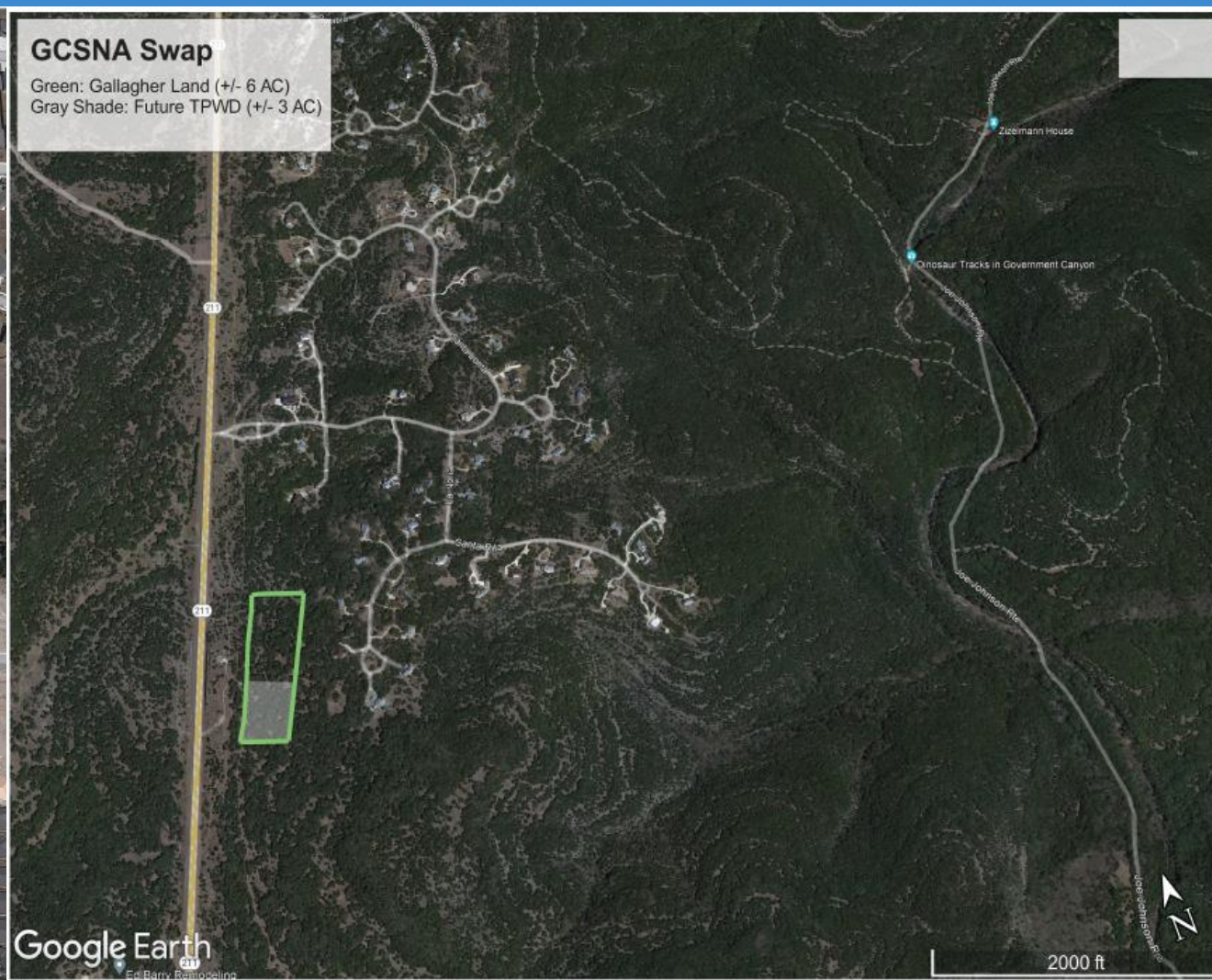
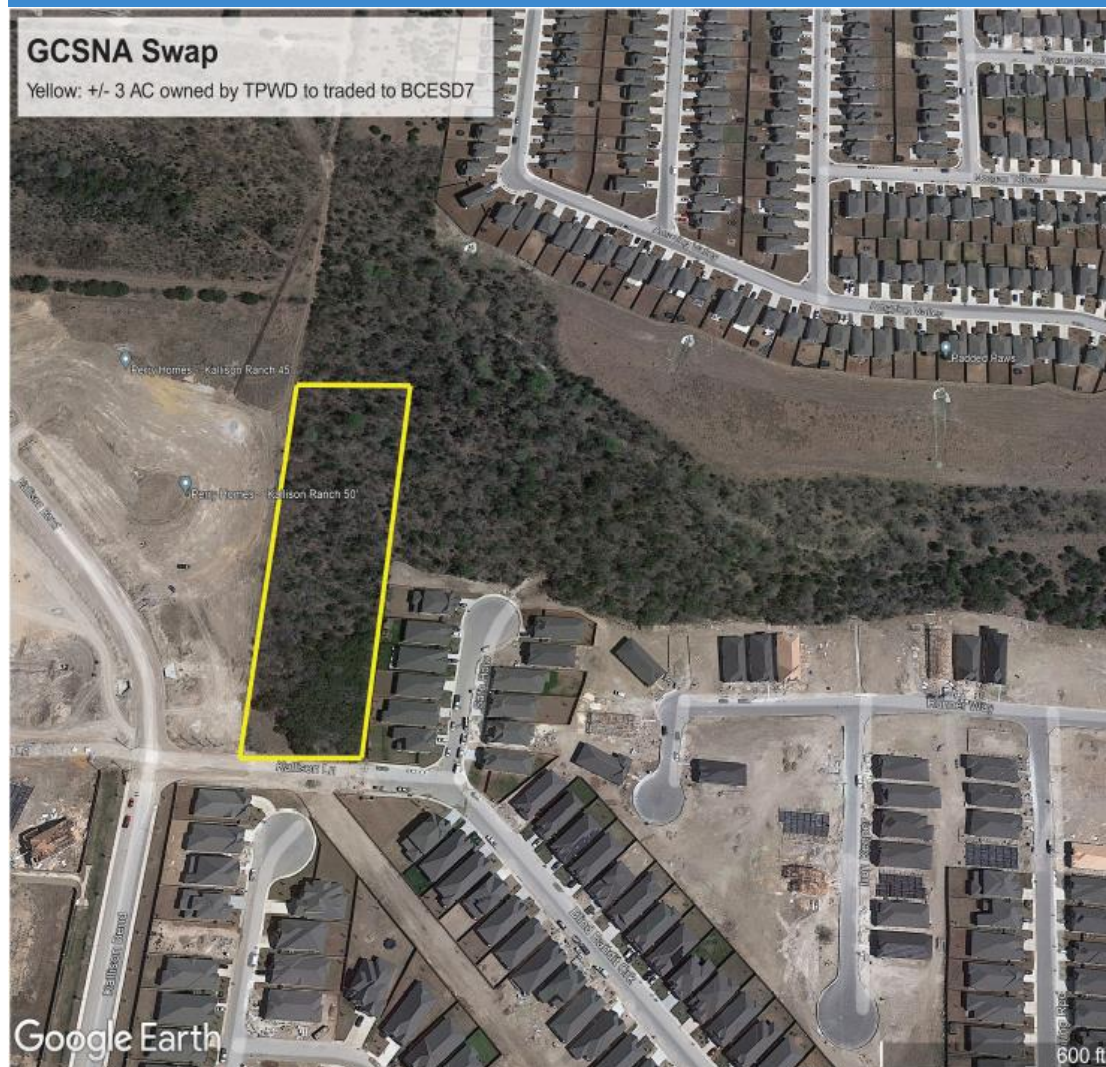


ESD 7/Kallison Ranch Land Swap (~3 acres) Bexar County

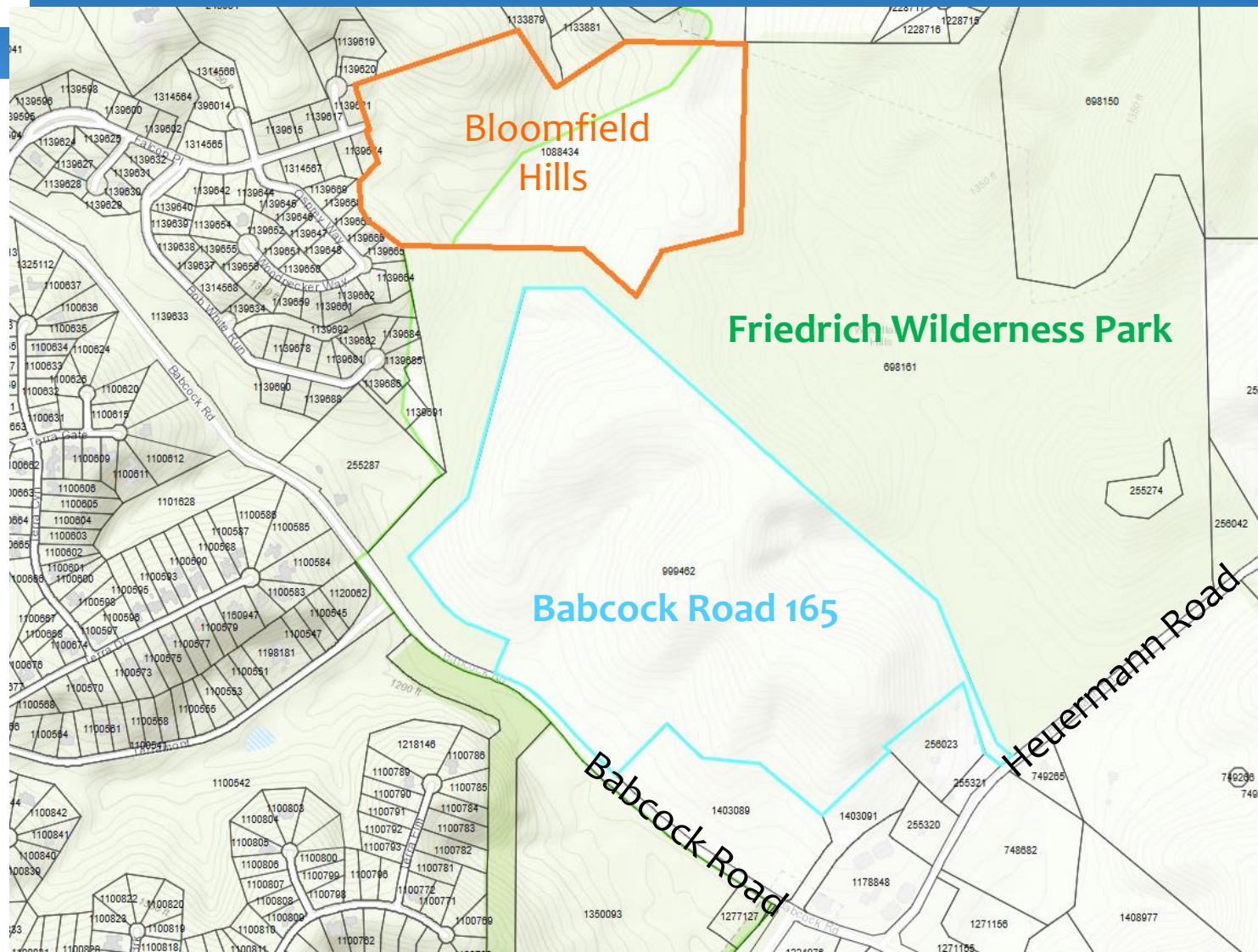




ESD 7/Kallison Ranch Land Swap (~3 acres) Bexar County



Babcock Road 165 Property (~137 acres) Bexar County



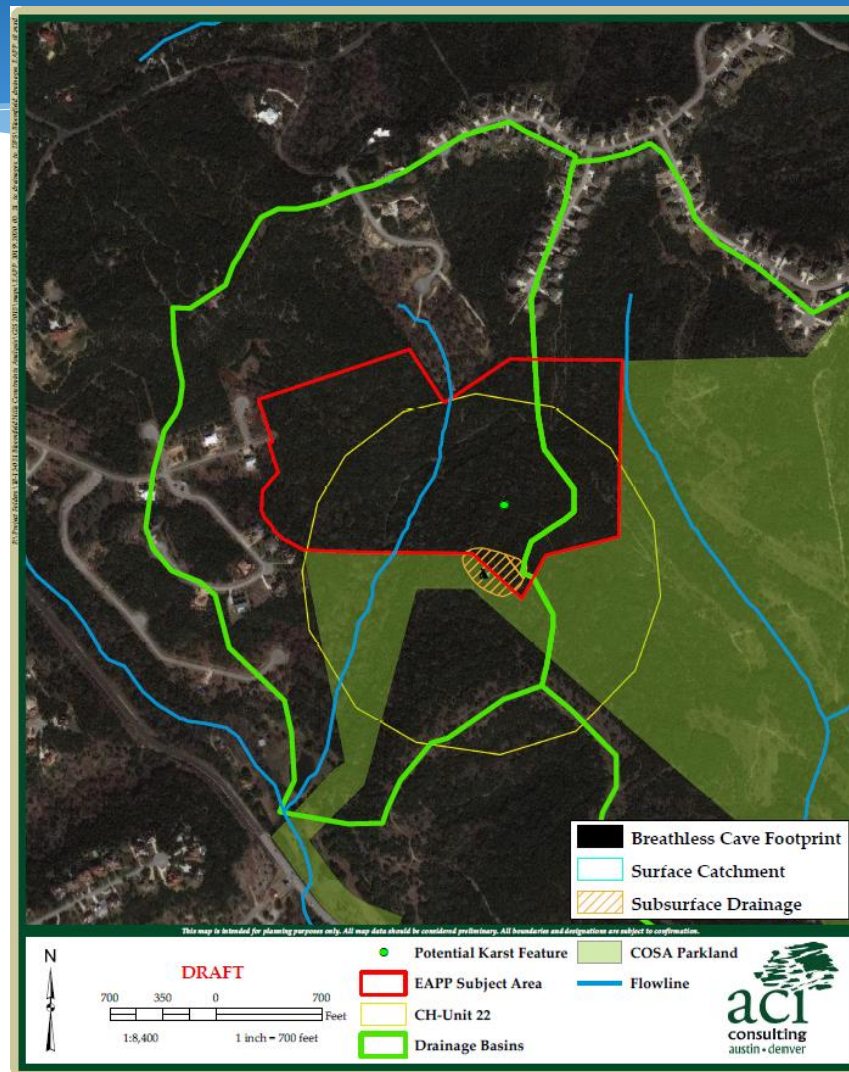


Babcock Road 165 Property (~137 acres) Bexar County

- ~100% EACZ
- Top 10% SET Model
- Located adjacent to Friedrich Wilderness Park and near Bloomfield Hills property
- Contains a portion of the Breathless Cave drainage buffer area
- Owners seeking fee simple sale
- Requesting Stage 1 consideration



Babcock Road 165 Property (~137 acres) Bexar County



Bloomfield
 Drainage Basins - Aerial Photograph

aci Project No.: 18-13-031
 March 2020

Babcock Road 165 Property (~137 acres) Bexar County

