



GREEN  
SPACES  
ALLIANCE  
OF SOUTH TEXAS

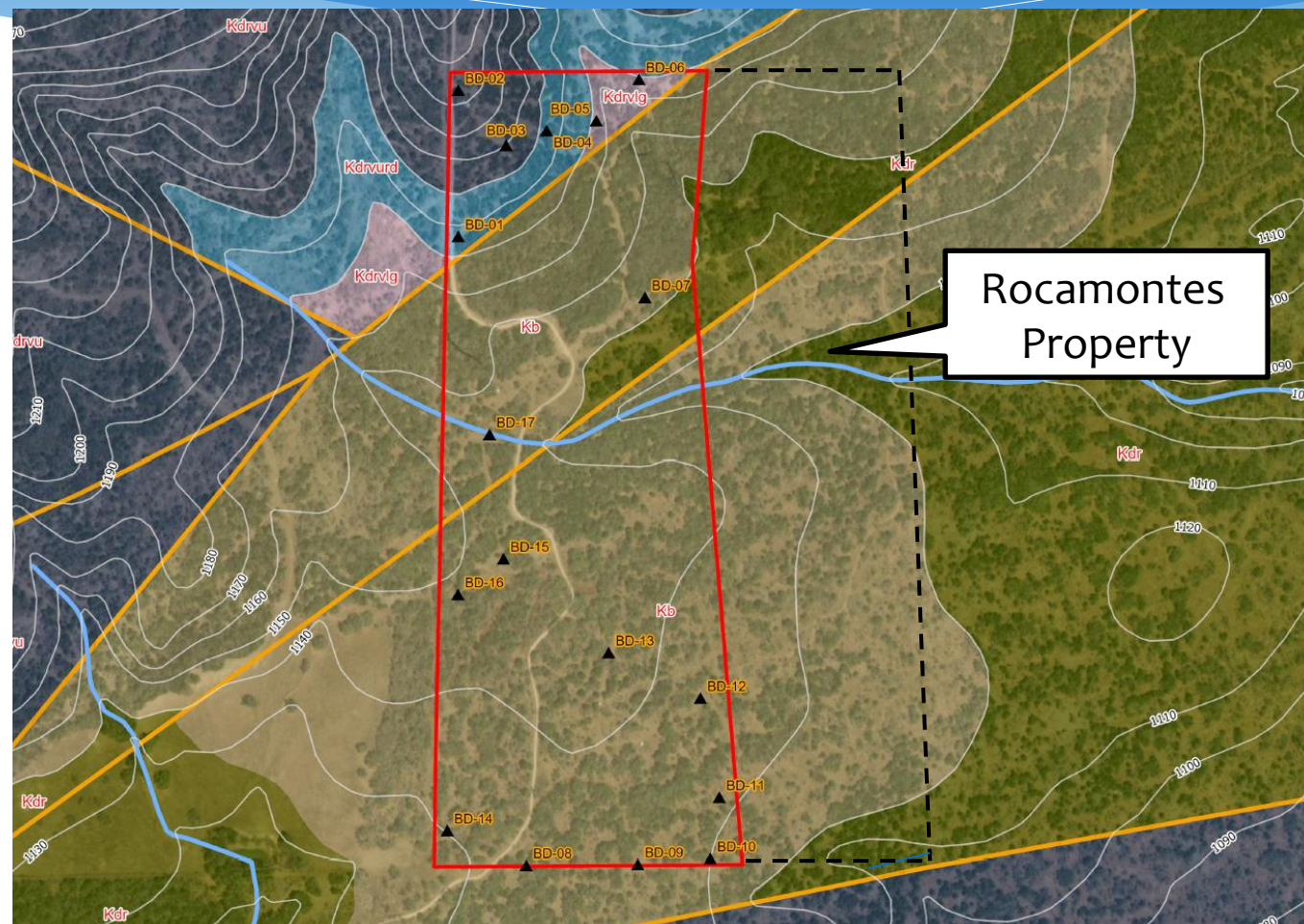
Rocamontes Property





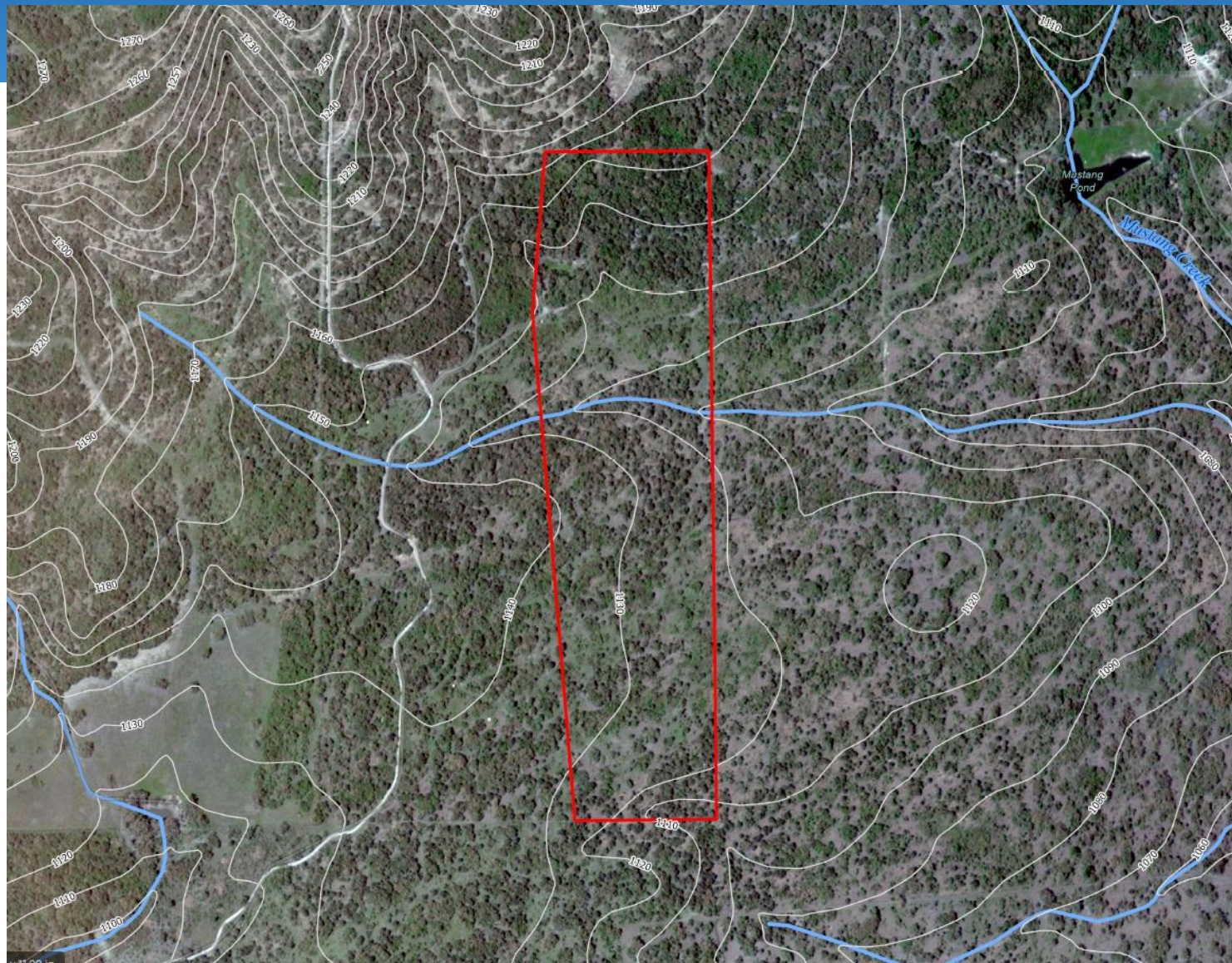
# Rocamontes Property (~50 acres) Medina County

- ~100% EACZ
- Top 10% SET Model
- Located adjacent to Wolfe Ranch (currently under evaluation), Currier Ranch and Oefinger Ranch
- EAA geological assessment ranked moderate for water quantity and high for water quality; appraisal completed
- **Requesting Stage 2 consideration**





## Rocamontes Property (~50 acres) Medina County







## Rocamontes Property (~50 acres) Medina County

