

## **RESOLUTION NO.**

### **A RESOLUTION RECOMMENDING APPROVAL OF A MEMORIAL DESIGNATION REQUEST TO ESTABLISH “MONTGOMERY MEMORIAL WAY” ON “DOUGLAS WAY” LOCATED IN CITY COUNCIL DISTRICT 2 SAN ANTONIO, TEXAS.**

**WHEREAS**, the City of San Antonio Development Services Department staff received a Memorial Designation Request Application to establish “Montgomery Memorial Way” on “Douglas Way” between South Olive Street and South Pine Street; and

**WHEREAS**, Chapter 6 of the City Code of the City of San Antonio requires memorial designation requests to be considered by the Planning Commission of the City of San Antonio for a recommendation to the City of San Antonio City Council; and

**WHEREAS**, the City of San Antonio Development Services Department in accordance with Chapter 6 of the City Code of Ordinances notified all owners of real property along the segment of the proposed memorial designation and

**WHEREAS**, the Planning Commission of the City of San Antonio held a public hearing on July 10, 2024, where they reviewed evidence and received public testimony regarding the proposed memorial designation;

**NOW, THEREFORE, BE IT RESOLVED BY THE PLANNING COMMISSION OF THE CITY OF SAN ANTONIO THAT:**

**SECTION 1:** The Planning Commission of the City of San Antonio recommends that the San Antonio City Council **APPROVE** the proposed memorial designation of Douglas Way between between South Olive Stret and South Pine Street to Montgomery Memorial Way in City Council District 2 (**Exhibit “A”**).

SIGNED this 10th day of July 2024.

Attest:

Approved:

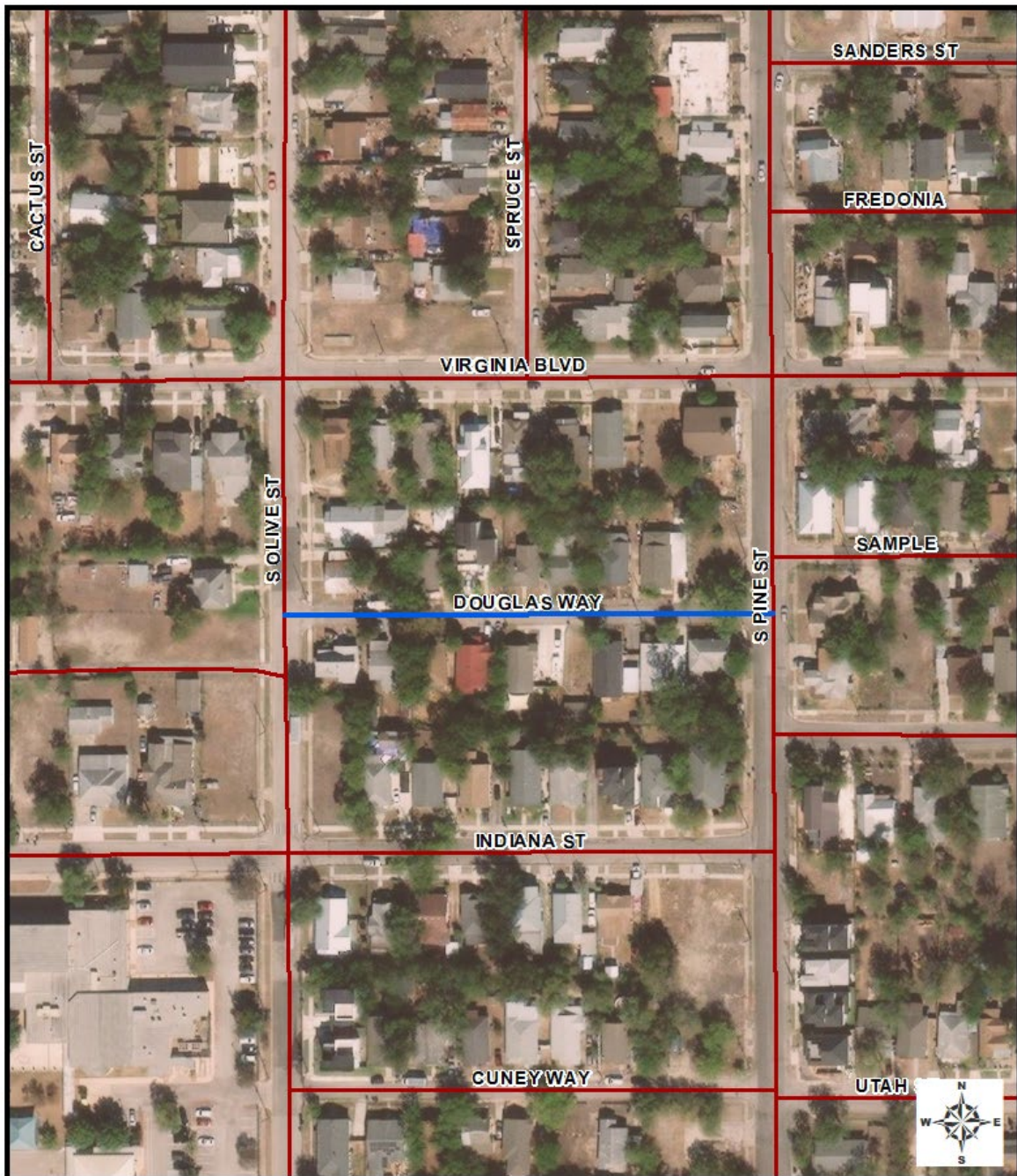
---

Executive Secretary  
City of San Antonio Planning Commission

---

George Peck, Chair  
City of San Antonio Planning Commission

# Exhibit "A"





City of San Antonio  
Development Services Department  
Land Entitlement Section  
1901 S. Alamo, San Antonio, Texas 78204  
P.O. Box 839966, San Antonio, Texas 78283  
<http://www.sanantonio.gov/dsd>

## City Council District 2

Proposed Memorial Designation of  
Douglas Way to  
Montgomery Memorial Way

Douglas Way Street Segment

 Douglas Way Street Segment

 Miles  
0 0.01 0.02 0.03 0.04