

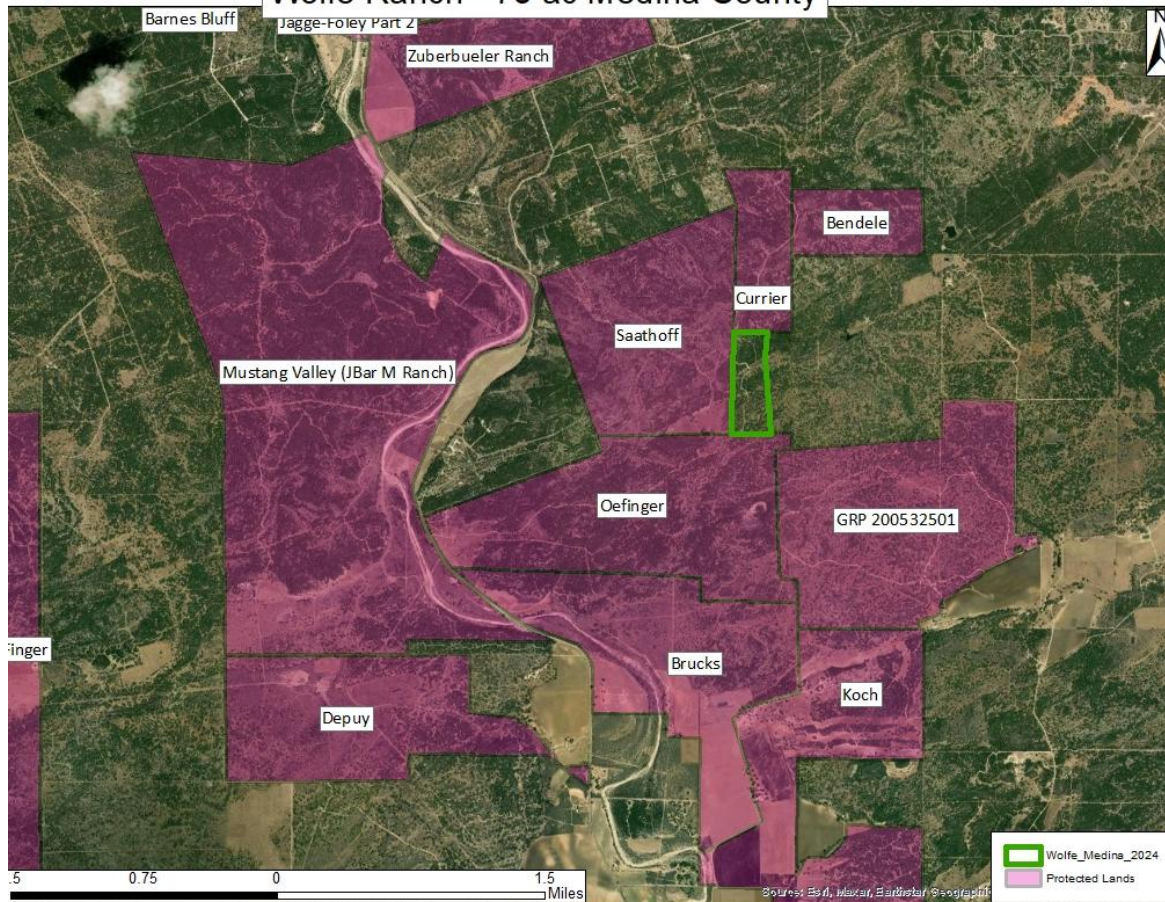


GREEN  
SPACES  
ALLIANCE  
OF SOUTH TEXAS

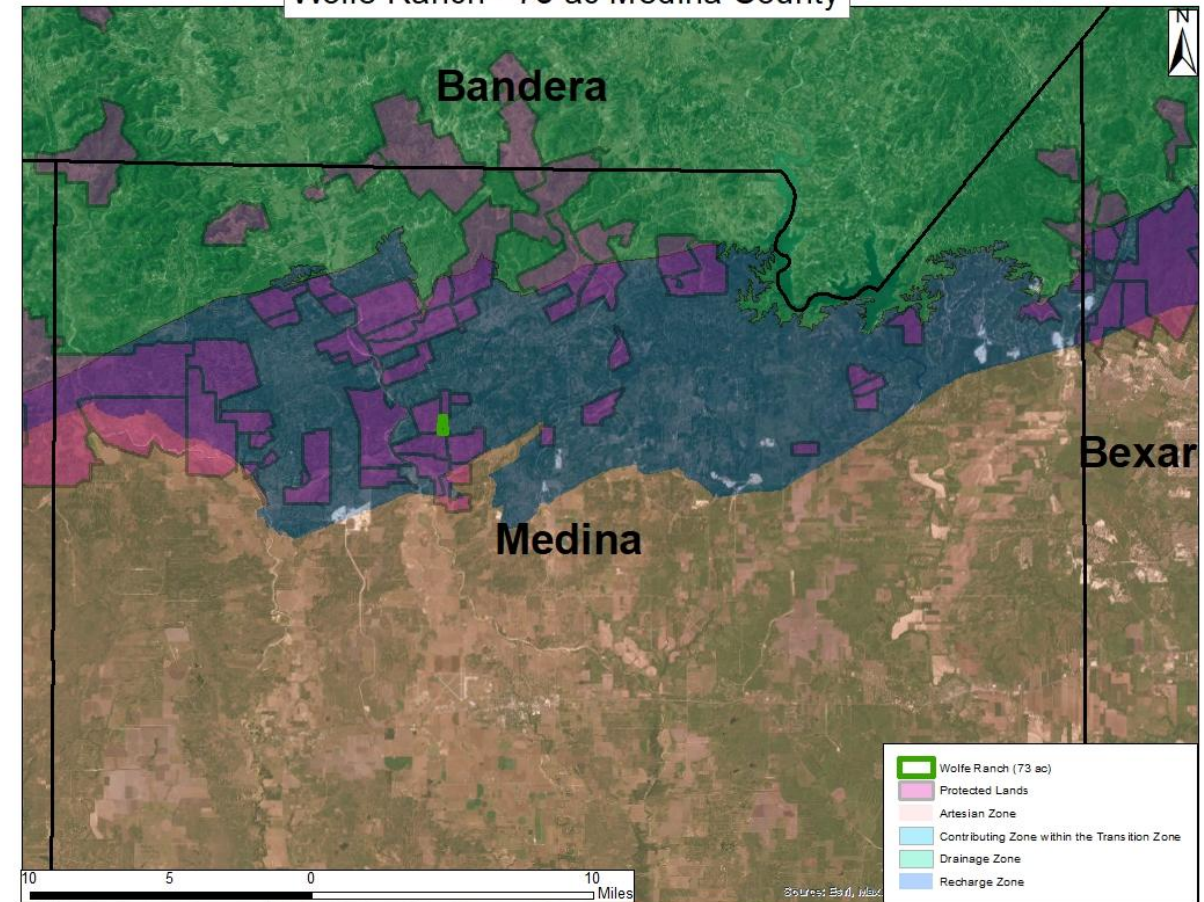
Wolfe Property  
Rocamontes Property

# Wolfe Ranch (72.73 acres) Medina County

Wolfe Ranch - 73 ac Medina County



Wolfe Ranch - 73 ac Medina County







## Wolfe Ranch (~72.73 acres) Medina County

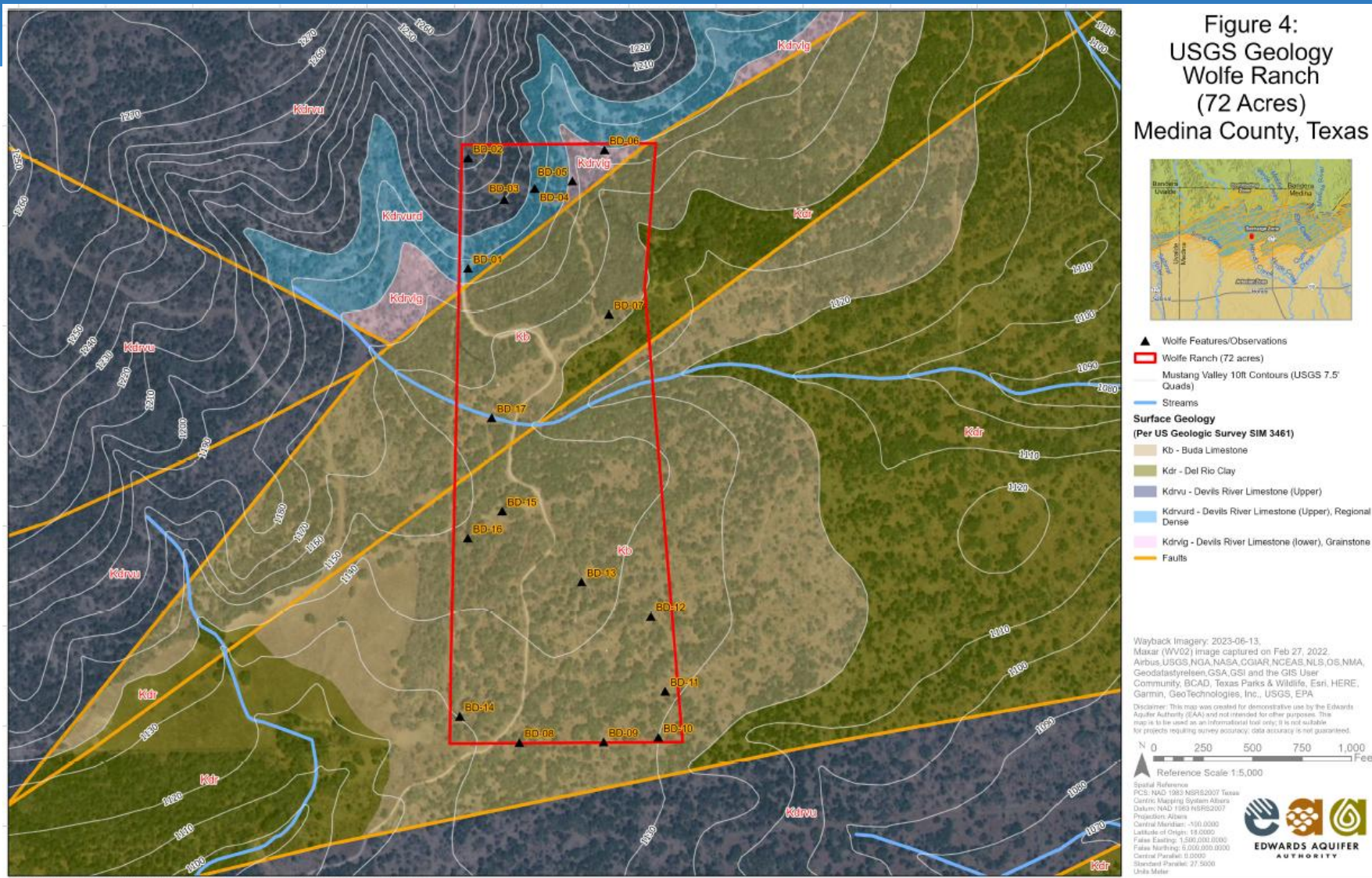
- ~100% EARZ
- Top 10% SET Model
- Contiguous with Currier, Saathoff, and Oefinger properties
- Adjacent to 7,526 acre block of conserved properties
- Stage 2 due diligence completed
- EAA geological assessment report ranked high water quality and moderate water quantity

➤ **Requesting Final Approval**



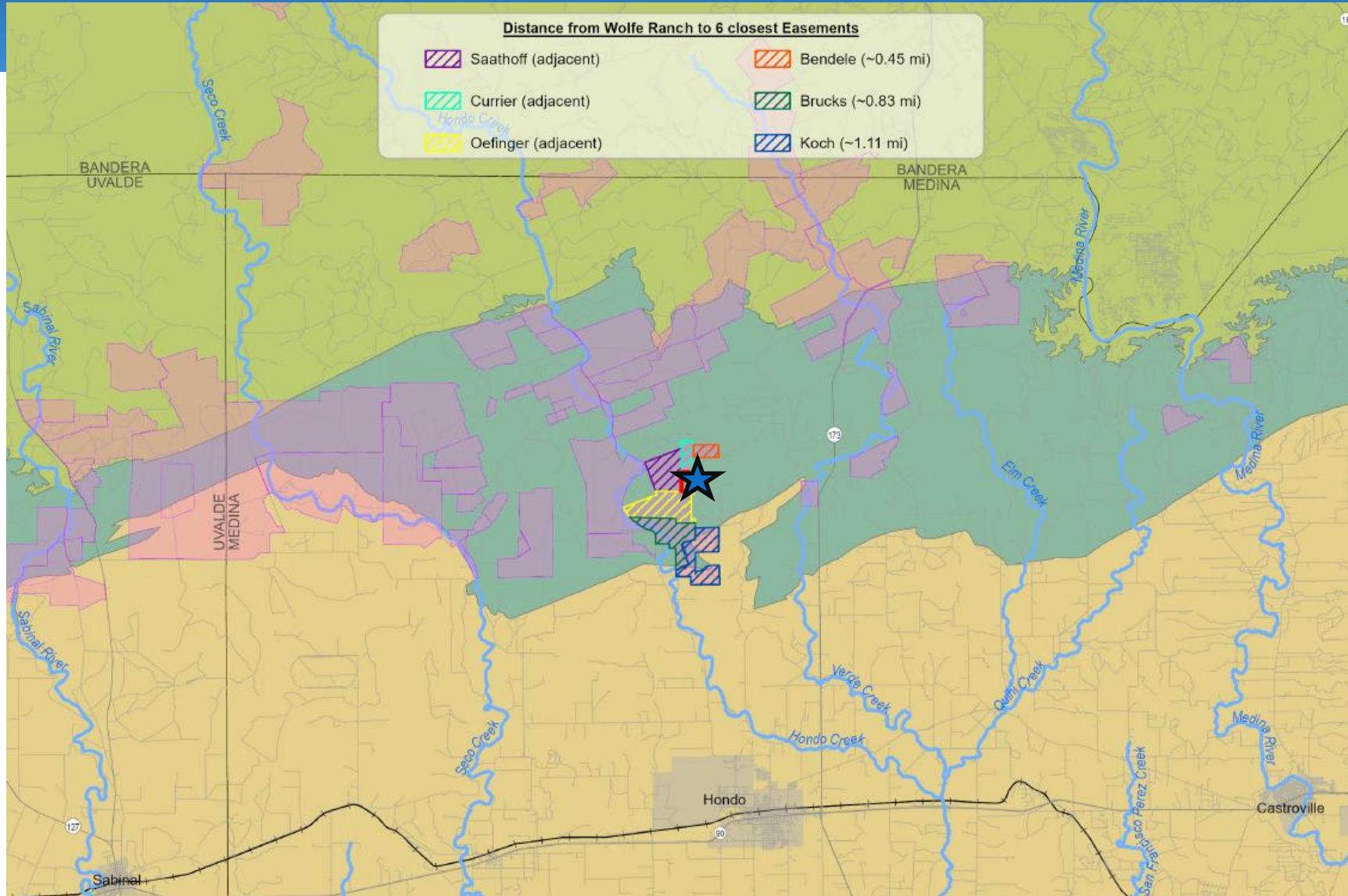


# Wolfe Ranch (~73 acres) Medina County





# Rocamontes Property (49.97 acres) Medina County

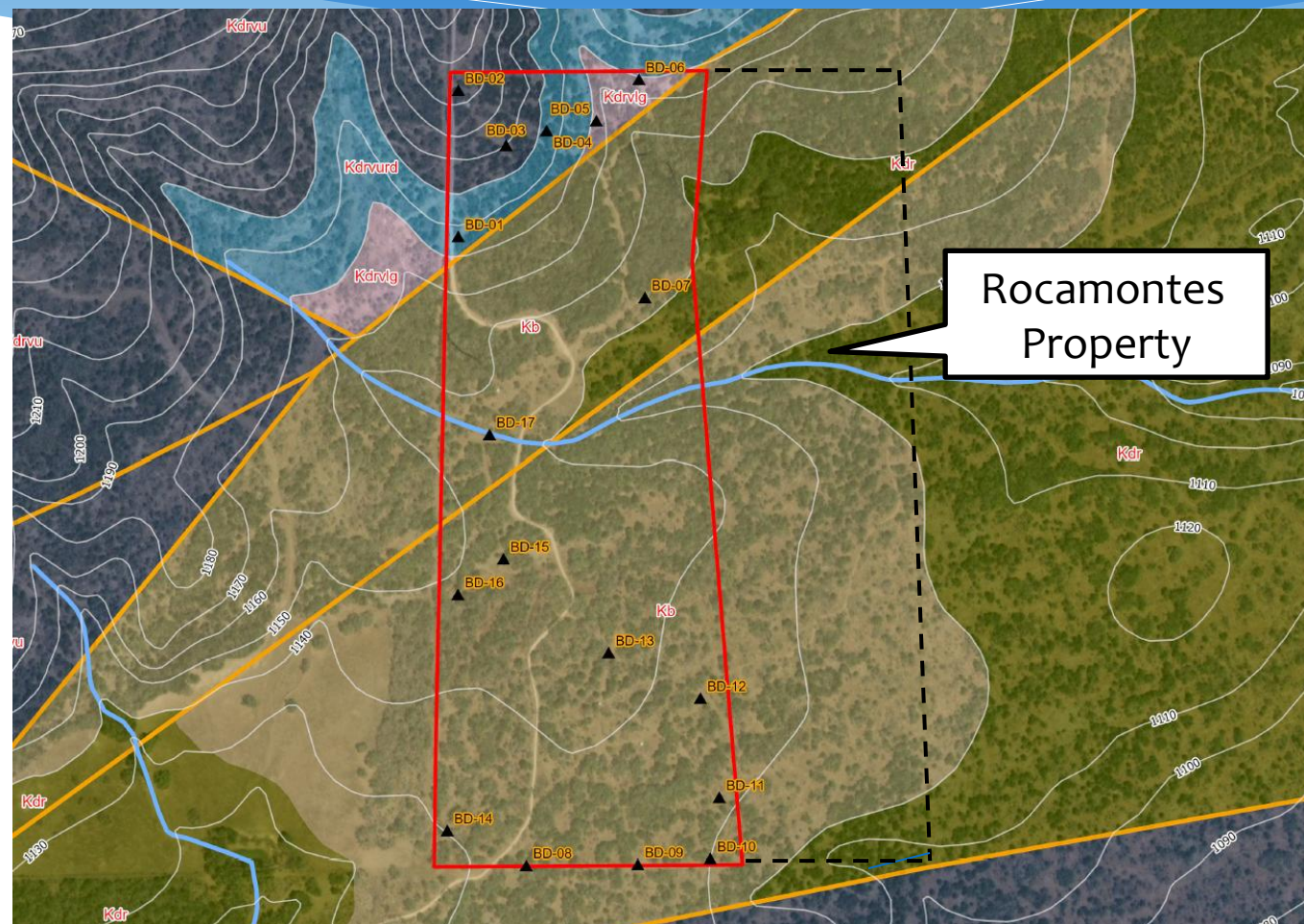






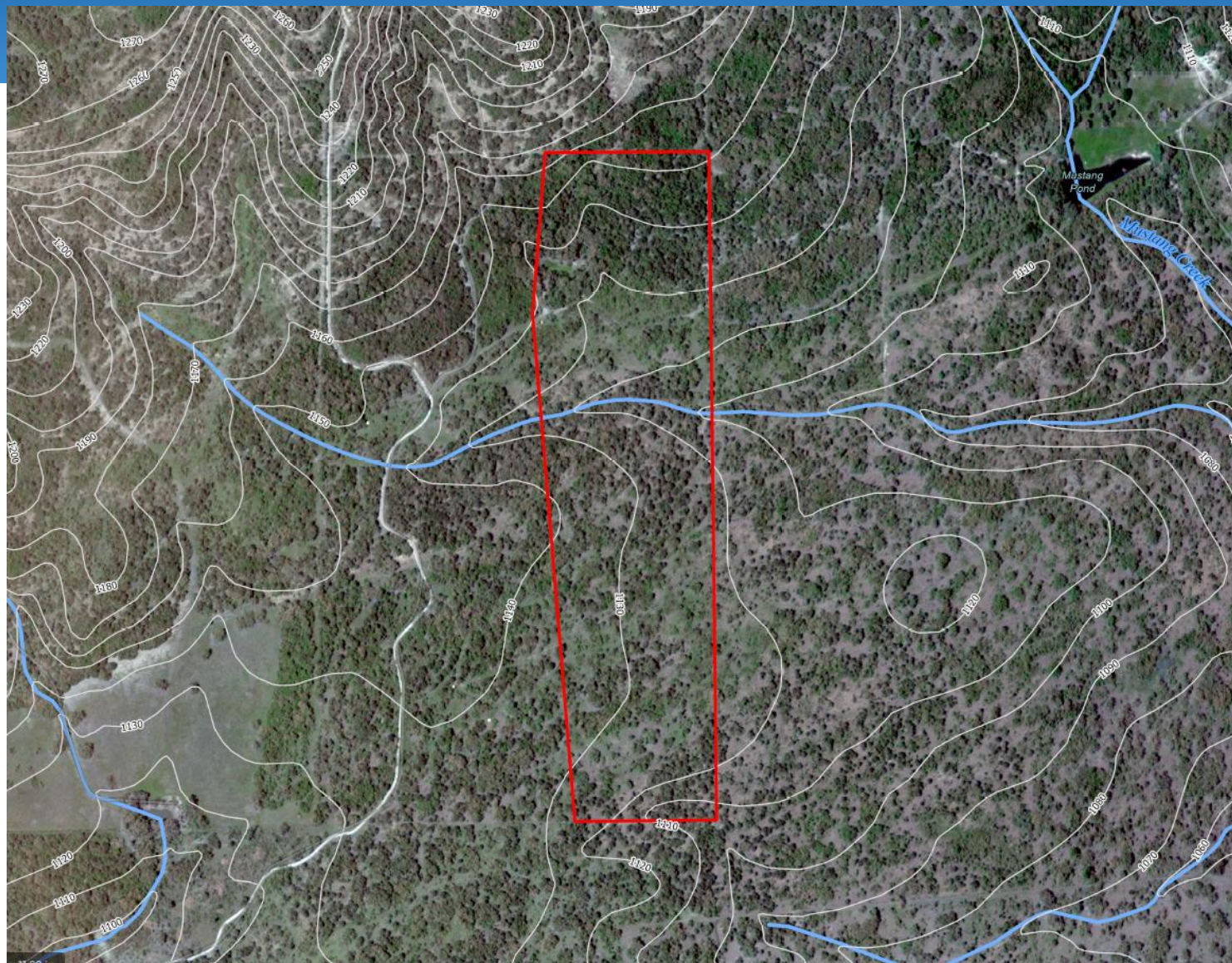
## Rocamontes Property (49.97 acres) Medina County

- ~100% EACZ
- Top 10% SET Model
- Located adjacent to Wolfe Ranch (currently under evaluation), Currier Ranch and Oefinger Ranch
- Stage 2 due diligence completed
- EAA geological assessment ranked moderate for water quantity and high for water quality; appraisal completed
- **Requesting Final Approval**





## Rocamontes Property (49.97 acres) Medina County







## Rocamontes Property (49.97 acres) Medina County

