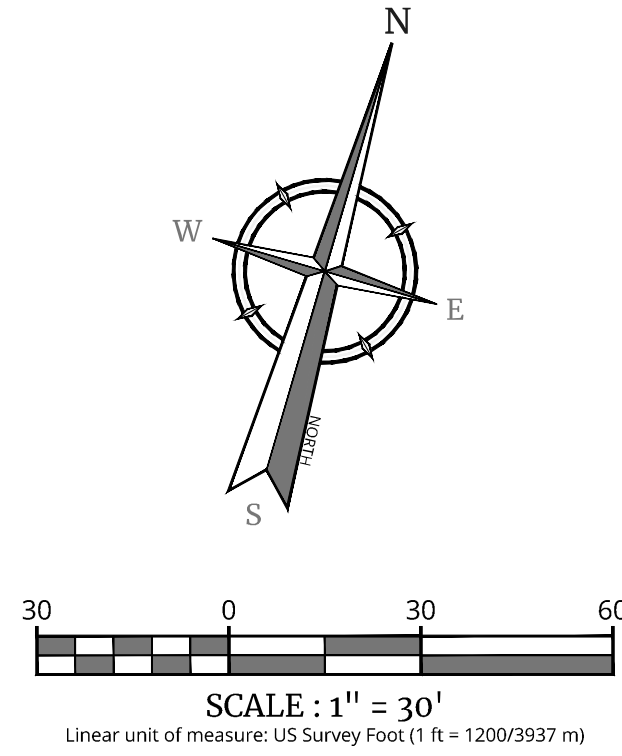
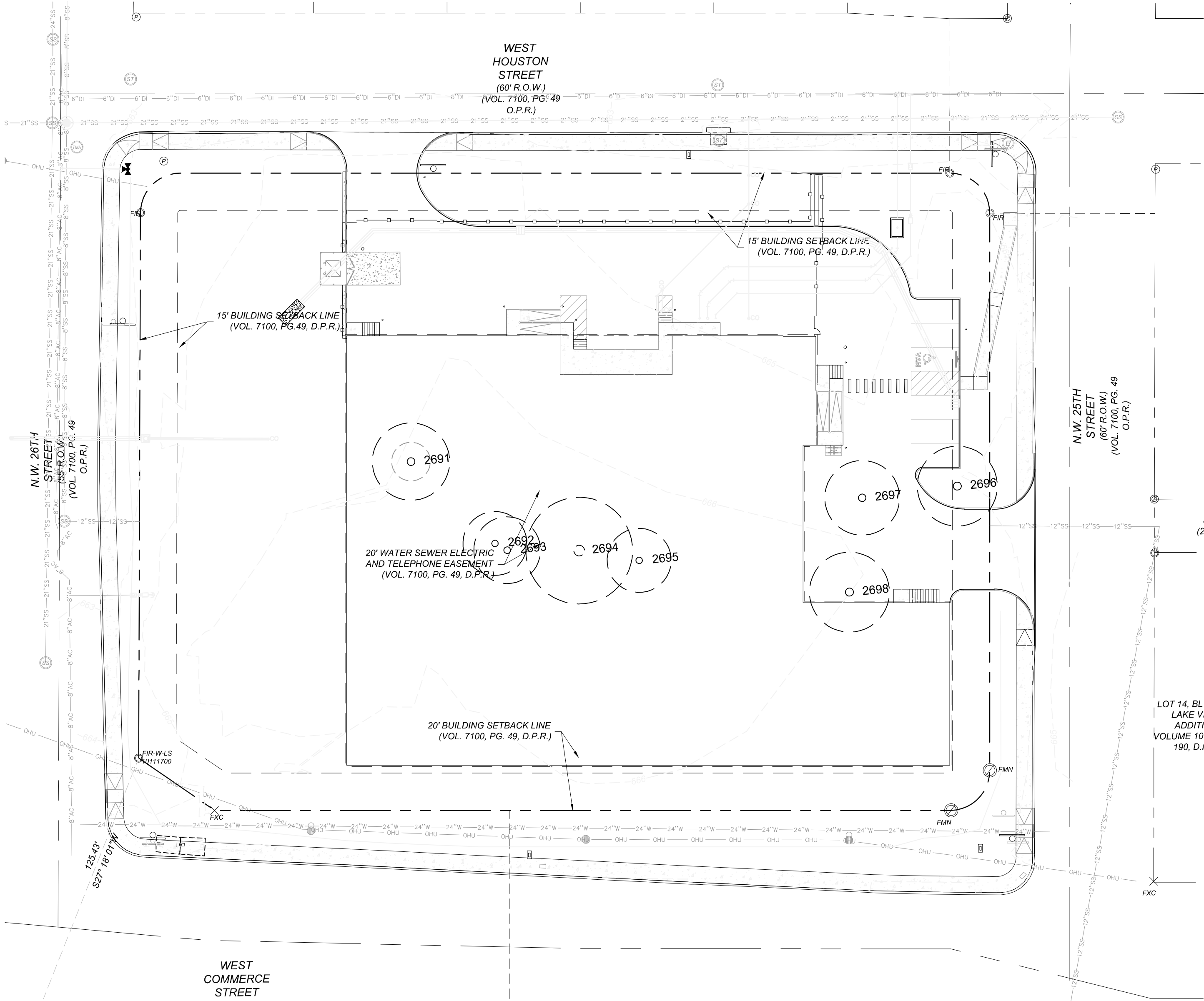


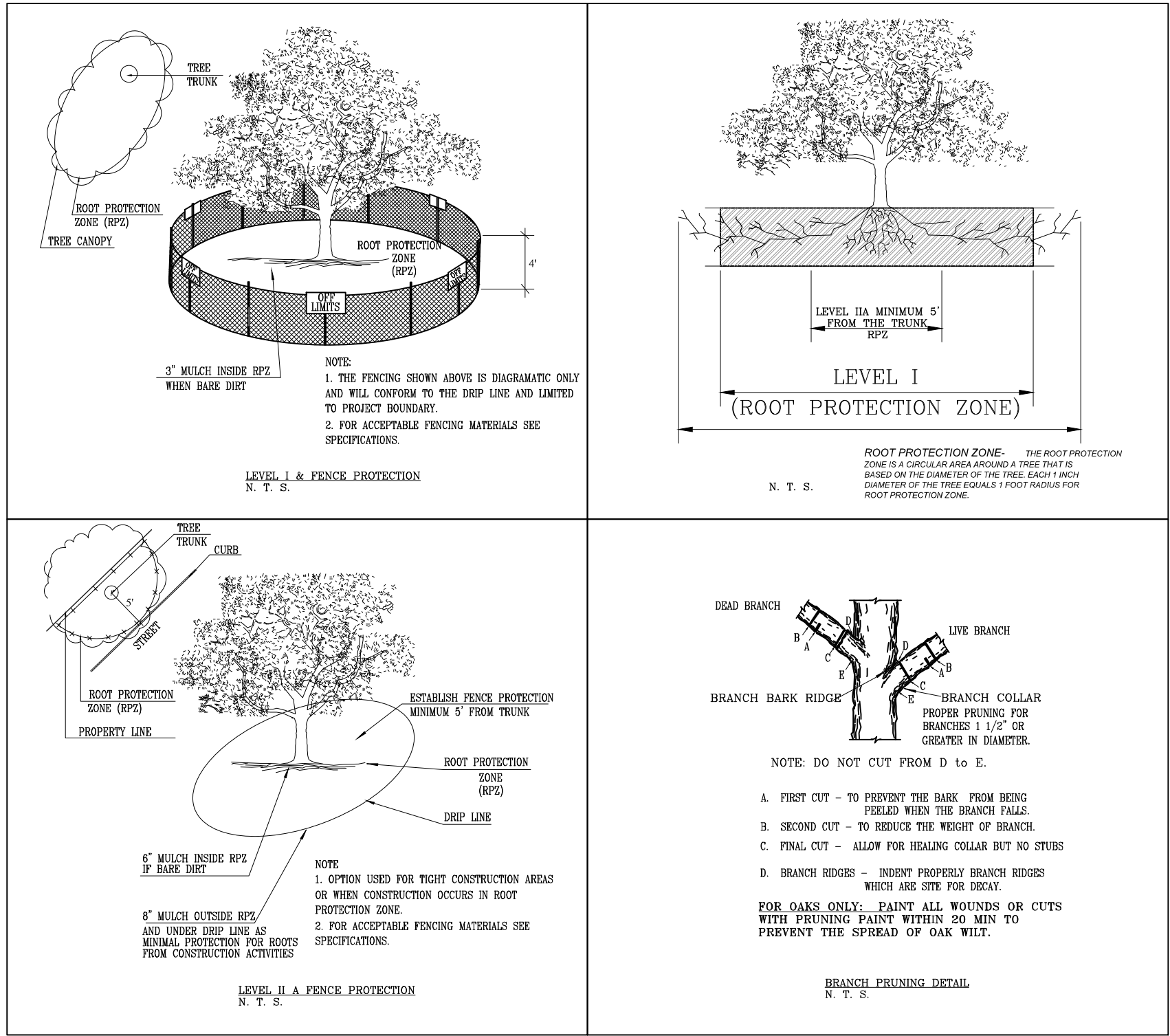
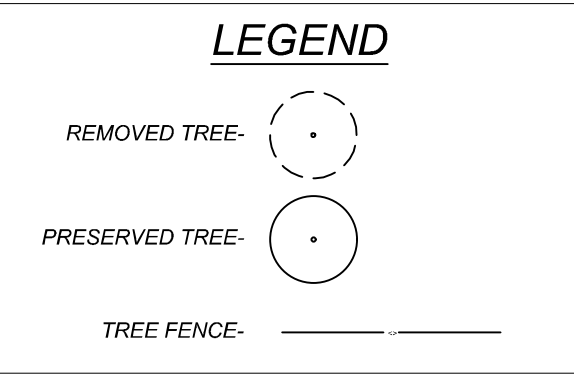
NOTE:
ALL OF THIS PROJECT FALLS WITHIN THE FLOODPLAIN.



LOCATION MAP
N. T. S.

TREE PRESERVATION NOTES:

1. A ROOT PROTECTION ZONE WILL BE ESTABLISHED AROUND EACH TREE OR ANY VEGETATION TO BE PRESERVED TO MEET THE LANDSCAPE OR TREE PRESERVATION ORDINANCES. THE ROOT PROTECTION ZONE SHALL BE AN AREA DEFINED BY THE RADIUS EXTENDING OUTWARD FROM THE TRUNK OF THE TREE A DISTANCE OF ONE (1) LINEAR FOOT FOR EACH DIAMETER INCH AT BREAST HEIGHT (4.5') OF THE TREE. A 10-INCH DIAMETER TREE WILL HAVE A 10 FOOT RADIUS ROOT PROTECTION ZONE.
2. NO WORK SHALL BEGIN WHERE TREE PROTECTION FENCING HAS NOT BEEN COMPLETED AND APPROVED. TREE PROTECTION FENCING SHALL BE INSTALLED, MAINTAINED, AND REPAIRED BY THE CONTRACTOR DURING CONSTRUCTION. THE FENCING WILL BE A MINIMUM 4' HEIGHT.
3. ALL ROOTS LARGER THAN ONE-INCH IN DIAMETER ARE TO BE CUT CLEANLY AND OAK WOUNDS PAINTED WITHIN 30 MINUTES.
4. EXPOSED ROOTS SHALL BE COVERED AT THE END OF THE WORK DAY USING TECHNIQUES SUCH AS COVERING WITH SOIL, MULCH OR WET BURLAP.
5. NO EQUIPMENT, VEHICLES OR MATERIALS SHALL BE OPERATED OR STORED WITHIN THE ROOT PROTECTION ZONE. NO CLEAN-OUT AREAS WILL BE CONSTRUCTED SO THAT THE MATERIAL WILL BE IN OR MIGRATE TO THE ROOT PROTECTION ZONE.
6. NO GRADE CHANGE MORE THAN 3" IS ALLOWED WITHIN THE ROOT PROTECTION ZONE.
7. ROOTS OR BRANCHES IN CONFLICT WITH CONSTRUCTION SHALL BE CUT CLEANLY ACCORDING TO PROPER PRUNING METHODS. ALL OAK WOUNDS SHALL BE PAINTED WITHIN 30 MINUTES TO PREVENT OAK WILT INFECTION.
8. ANY TREE REMOVAL SHALL BE APPROVED BY THE CITY ARBORIST (210-207-0278)
9. TREES WHICH ARE DAMAGED OR LOST DUE TO THE CONTRACTOR'S NEGLIGENCE DURING CONSTRUCTION SHALL BE MITIGATED.
10. TREES MUST BE MAINTAINED IN GOOD HEALTH THROUGHOUT THE CONSTRUCTION PROCESS. MAINTENANCE MAY INCLUDE WATERING THE ROOT PROTECTION ZONE AN/OR WASHING FOLIAGE.
11. NO WIRES, NAILS OR OTHER MATERIALS MAY BE ATTACHED TO PROTECTED TREES.



TREE INVENTORY - COMMERCE STORAGE-FLOODPLAIN

		Understory Species* 5.0" - 11.5"		Significant Tree 6" - 23.5"		Significant Tree** 10.0" - 23.5"		Heritage 3:1		Heritage 1:1		Additional Inches Preserved for Mitigation ***		Tree Canopy (Using SqFt as per Appendix E)																																																																																																																																																																																																																																																																																																																																																																																																																																																																																																																																																																																																																																																																																																																																																																																																																																																																																																																																																																
Tag #	Species	Removed	Preserved	Removed	Preserved	Removed	Preserved	Removed	Preserved	Removed	Preserved			Notes	Removed	Preserved																																																																																																																																																																																																																																																																																																																																																																																																																																																																																																																																																																																																																																																																																																																																																																																																																																																																																																																																																														
2691	Pecan												IN DECLINE, 14.5																																																																																																																																																																																																																																																																																																																																																																																																																																																																																																																																																																																																																																																																																																																																																																																																																																																																																																																																																																	
2692	Arizona Ash												IN DECLINE, 12																																																																																																																																																																																																																																																																																																																																																																																																																																																																																																																																																																																																																																																																																																																																																																																																																																																																																																																																																																	
2693	Arizona Ash												IN DECLINE, 12.5																																																																																																																																																																																																																																																																																																																																																																																																																																																																																																																																																																																																																																																																																																																																																																																																																																																																																																																																																																	
2694	Arizona Ash					20																																																																																																																																																																																																																																																																																																																																																																																																																																																																																																																																																																																																																																																																																																																																																																																																																																																																																																																																																																								
2695	White Mulberry					12																																																																																																																																																																																																																																																																																																																																																																																																																																																																																																																																																																																																																																																																																																																																																																																																																																																																																																																																																																								
2696	White Mulberry					15																																																																																																																																																																																																																																																																																																																																																																																																																																																																																																																																																																																																																																																																																																																																																																																																																																																																																																																																																																								
2697	Arizona Ash					14																																																																																																																																																																																																																																																																																																																																																																																																																																																																																																																																																																																																																																																																																																																																																																																																																																																																																																																																																																								
2698	Hackberry					15																																																																																																																																																																																																																																																																																																																																																																																																																																																																																																																																																																																																																																																																																																																																																																																																																																																																																																																																																																								
Sub. Tot. Inches=		0	0	0	0	76	0	0	0	0	0	0																																																																																																																																																																																																																																																																																																																																																																																																																																																																																																																																																																																																																																																																																																																																																																																																																																																																																																																																																																		
Total inches by category=		#DIV/0!		Significant Preservation		0%		Heritage Preservation		#DIV/0!		0		0	0																																																																																																																																																																																																																																																																																																																																																																																																																																																																																																																																																																																																																																																																																																																																																																																																																																																																																																																																																															
Preservation percentage=																																																																																																																																																																																																																																																																																																																																																																																																																																																																																																																																																																																																																																																																																																																																																																																																																																																																																																																																																																														
Mitigation required (Commercial) =		0		Commercial (inches)		60.8		Heritage Mitigation (inches)		0																																																																																																																																																																																																																																																																																																																																																																																																																																																																																																																																																																																																																																																																																																																																																																																																																																																																																																																																																																				
Mitigation required (Residential) =		0		Residential (inches)																																																																																																																																																																																																																																																																																																																																																																																																																																																																																																																																																																																																																																																																																																																																																																																																																																																																																																																																																																										
No category to fall below 80% preservation for floodplain; Preserved- Tree to remain that meets root protection zone requirements described in section 35-523 of the UDC. Mitigation 1:1 for significant trees below minimum preservation requirements; 3:1 for heritage trees below 100% preservation * Small species: Cordalia, Redbud, Tx. Mountain Laurel, Tx. Persimmon, Hawthorn, Possumhaw - these are mitigated at 1:1 for Heritage Trees ** Ashe Juniper, Huisache, Mesquite, Arizona Ash, Hackberry protected at 10" dbh and mitigated at 1:1 for heritage trees *** Mitigation Trees: Unprotected-sized trees to be used for mitigation calculations; subtract inches from mitigation owed																																																																																																																																																																																																																																																																																																																																																																																																																																																																																																																																																																																																																																																																																																																																																																																																																																																																																																																																																																														

TREE MITIGATION SUMMARY	
Heritage Trees	0
Significant Trees	76
Total Mitigation Req.	60.8
New Trees (3 @ 3')	27
New Trees (14 @ 2')	28
New Trees (14 @ 1.5')	21
Total New Tree Inches	76
Payment to Tree Fund	\$0

Colliers

Engineering
& Design

www.colliersengineering.com

Copyright © 2024, Colliers Engineering & Design All Rights Reserved. This drawing and all the information contained herein is a confidential document for use only by the party for whom the services were contracted or to whom it is loaned. This drawing may not be copied, reused, disclosed, distributed or relied upon for any other purpose without the express written consent of Colliers Engineering & Design.

Formerly Known as

KFW

811

PROTECT YOURSELF
ALL STATES REQUIRE NOTIFICATION OF EXCAVATIONS, DISSEMINATE OR ANY PERSON PREPARING TO DISTURB THE EARTH'S SURFACE ANYWHERE IN ANY STATE

FOR STATE SPECIFIC DIRECT PHONE NUMBERS VISIT: WWW.CALL811.COM

INSPIRED LANDSCAPE ARCHITECT
DAVID M. BECK
210
STATE OF TEXAS

07/17/2024

SITE PLAN

FOR
COMMERCE STORAGE

4115 W COMMERE STREET

SAN ANTONIO
BEXAR
TEXAS 78207

Colliers

Engineering
& Design

SAN ANTONIO (KFW)
3421 Paeanos
Parkway
San Antonio, TX 78231
Phone: 210.979.8444
COLLIERS ENGINEERING & DESIGN, INC.
TDRS FORM 11-0009
TDRS FORM 10194500

SCALE: AS SHOWN

DATE: 05/23/2024

DRAWN BY: JB

CHECKED BY: DB

PROJECT NUMBER: 1030-02-02

DRAWING NAME: L1.0-TREE PRES-10300202

REVIEWED BY: DB

SHEET TITLE:

TREE PRESERVATION PLAN

SHEET NUMBER:

L1.0

NOTE: DO NOT SCALE DRAWINGS FOR CONSTRUCTION.