

Current Zoning		ART NS Stations		City of San Antonio	
Residential Single-Family District	Manufactured Housing District	ART NS Stations	General Industrial District	City of San Antonio	Military Bases
Multi-Family District	Mixed Use District	CRAG Boundary	Office District	City Council Boundary	Creeks
Residential Mixed District	Commercial District	TOD Applicability Line	Resource Protection District	Cities and Towns	Lakes
	Neighborhood Commercial District	ART Corridor	Heavy Industrial District	Bexar County	
			Infill Development Zone		
			Unzoned Right of Way		

Overlay Districts such as Airport Overlay, Neighborhood Conservation, Historic Overlay, Historic Landmarks, River Improvement Overlay, and Mission Protection Overlay, and any others are not shown on the map

Data Source: City of San Antonio Enterprise GIS, Bexar Metro 911, Bexar Appraisal District
This Geographic Information System Product, received from the City of San Antonio is provided "as is" without warranty of any kind, and the City of San Antonio expressly disclaims all express and implied warranties, including but not limited to the implied warranties of merchantability and fitness for a particular purpose. The City of San Antonio does not warrant, guarantee, or make any representations regarding the use, or the results of the use, of the information provided to you by the City of San Antonio in terms of correctness, accuracy, reliability, timeliness or otherwise.
The entire risk as to the results and performance of any information obtained from the City of San Antonio is entirely assumed by the recipient.
*Please contact the responsible City of San Antonio Department for specific determinations.
Map Created by: g071173
Map File Location: C:\ArcView\Transportation Department\ART_01020204\Airport to Rector.mxd
Map Last Edited: 11/06/2024
PDF Filename: Airport to Rector.pdf

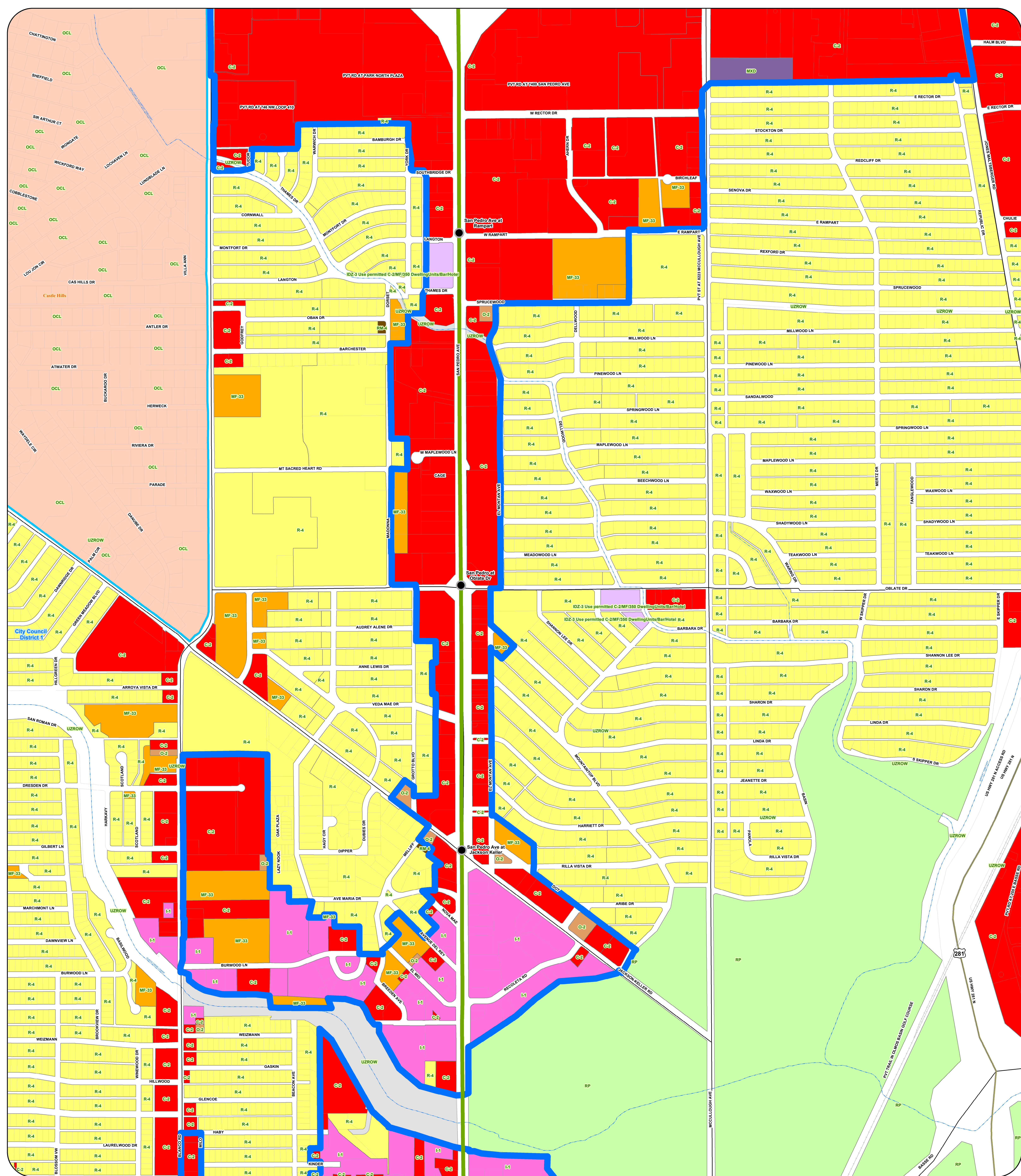
DRAFT

City of San Antonio 2024

Airport to Rector TOD

0 0.125 0.25 Miles

City of San Antonio
Information Technology Services Department
GIS Public Services Division
City Tower
100 W. Houston St., 18th floor
San Antonio, TX 78205



Current Zoning

- Residential Single-Family District
- Multi-Family District
- Residential Mixed District

- Manufactured Housing District
- Mixed Use District
- Commercial District
- Neighborhood Commercial District

- Downtown District
- General Industrial District
- Heavy Industrial District
- Infill Development Zone

- Form Base Zoning District
- Office District
- Resource Protection District
- Unzoned Right of Way
- Downtown Business District

- ART NS Stations
- CRAG Boundary
- TOD Applicability Line
- ART Corridor

- City of San Antonio
- City Council Boundary
- Cities and Towns
- Bexar County

- Military Bases
- Creeks
- Lakes

Overlay Districts such as Airport Overlay, Neighborhood Conservation, Historic Overlay, Historic Landmarks, River Improvement Overlay, and Mission Protection Overlay, and any others are not shown on the map

DRAFT

City of San Antonio 2024

Rector to Olmos Creek TOD

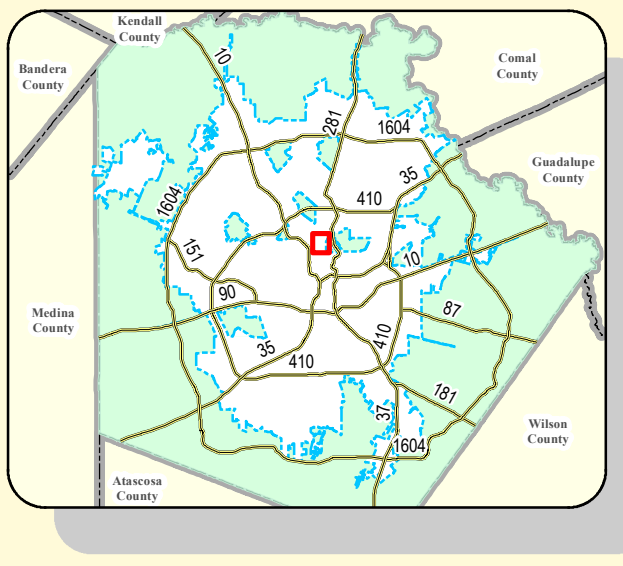
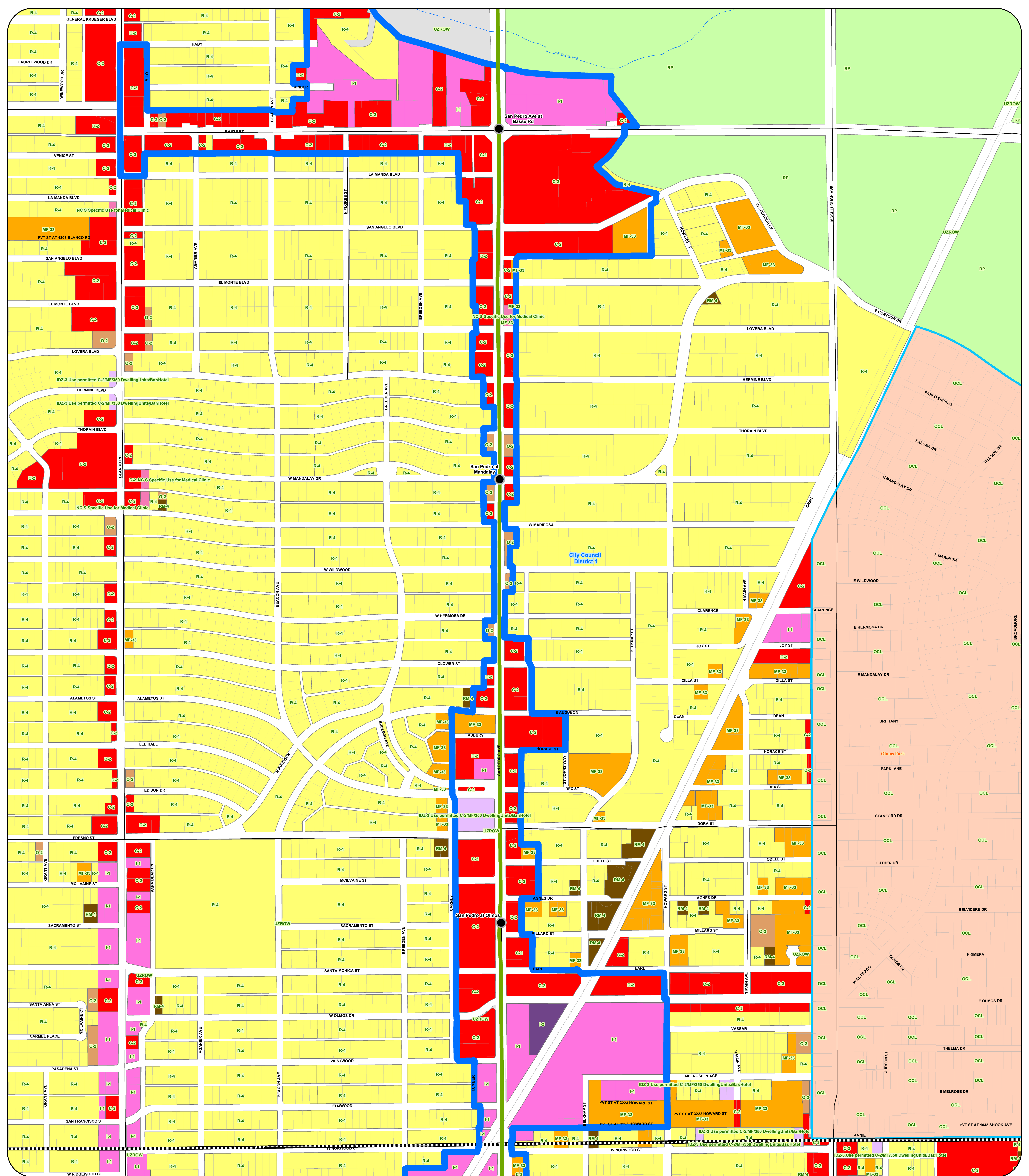
City of San Antonio

Information Technology Services Department

GIS Public Services Division

100 W. Houston St., 18th floor

San Antonio, TX 78205



DRAFT

Overlay Districts such as Airport Overlay, Neighborhood Conservation, Historic Overlay, Historic Landmarks, River Improvement Overlay, and Mission Protection Overlay, and any others are not shown on the map

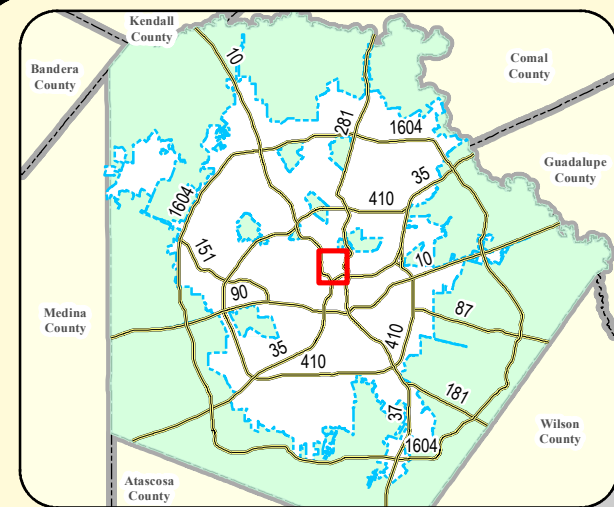
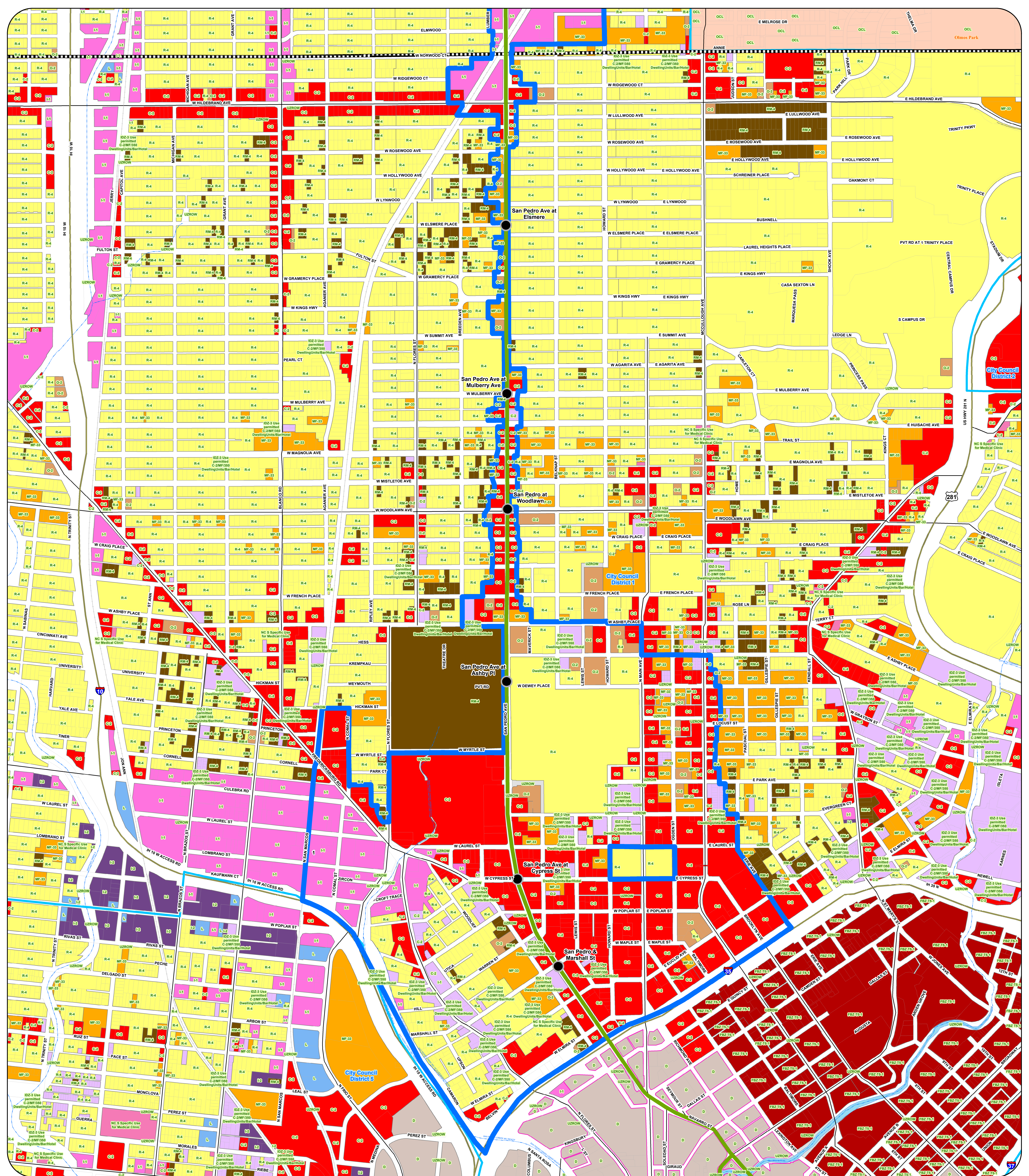
Data Source: City of San Antonio Enterprise GIS, Bexar Metro 911, Bexar Appraisal District.
This Geographic Information System Product, received from the City of San Antonio is provided "as is" without warranty of any kind, and the City of San Antonio expressly disclaims all express and implied warranties, including but not limited to the implied warranties of merchantability and fitness for a particular purpose. The City of San Antonio does not warrant, guarantee, or make any representations regarding the use, or the results of the use, of the information provided to you by the City of San Antonio in terms of correctness, accuracy, reliability, timeliness or otherwise. The entire risk as to the results and performance of any information obtained from the City of San Antonio is entirely assumed by the recipient.
*Please contact the responsible City of San Antonio Department for specific determinations.
Map Created by: g07173
Map File Location: C:\Development\Transportation Department\GIS\2023\GIS\Olmos Creek to Northern Edge of CRAG Boundary.mxd
Map Last Edited: 10/10/2024
PDF Filename: Olmos Creek to Northern Edge of CRAG Boundary.pdf

- | | | | | | | |
|------------------------------------|----------------------------------|-----------------------------|------------------------------|-----------------|-----------------------|----------------|
| Current Zoning | Manufactured Housing District | Downtown District | Form Base Zoning District | ART NS Stations | City of San Antonio | Military Bases |
| Residential Single-Family District | Mixed Use District | General Industrial District | Office District | CRAG Boundary | City Council Boundary | Creeks |
| Multi-Family District | Commercial District | Heavy Industrial District | Resource Protection District | ART Corridor | Cities and Towns | Lakes |
| Residential Mixed District | Neighborhood Commercial District | Infill Development Zone | Unzoned Right of Way | | Bexar County | ART Corridor |
| | | Downtown Business District | | | | |

City of San Antonio 2024

Olmos Creek to Northern Edge of CRAG Boundary TOD

City of San Antonio
Information Technology Services Department
GIS Public Services Division
City Tower
100 W. Houston St., 18th floor
San Antonio, TX 78205



Source: City of San Antonio Enterprise GIS, Bexar Metro 911, Bexar Appraisal District
This Geographic Information System Product, received from the City of San Antonio is provided "as is" without warranty of any kind, and the City of San Antonio expressly disclaims all express and implied warranties, including but not limited to the implied warranties of merchantability and fitness for a particular purpose. The City of San Antonio does not warrant, guarantee, or make any representations regarding the use, or the results of the use, of the information provided to you by the City of San Antonio in terms of correctness, accuracy, reliability, timeliness or otherwise. The entire risk as to the results and performance of any information obtained from the City of San Antonio is entirely assumed by the recipient.
Please contact the responsible City of San Antonio Department for specific determinations.

Map Created by: g07173
Map File Location: C:\Users\jg07173\Documents\GIS\2024\CRAG\Boundary to Interstate 35.mxd
Map Last Edited: 11/06/2024
PDF Filename: CRAG Boundary to Interstate 35.pdf

Current Zoning
Residential Single-Family District
Multi-Family District
Neighborhood Mixed District

Manufactured Housing District
Mixed Use District
Commercial District
Neighborhood Commercial District

Downtown District
General Industrial District
Heavy Industrial District
Infill Development Zone

Form Base Zoning District
Office District
Resource Protection District
Unzoned Right of Way
Downtown Business District

ART NS Stations
CRAG Boundary
ART Corridor
TOD Applicability Line

City of San Antonio
City Council Boundary
Cities and Towns
Bexar County

Military Bases
Creeks
Lakes

0 0.125 0.25 Miles

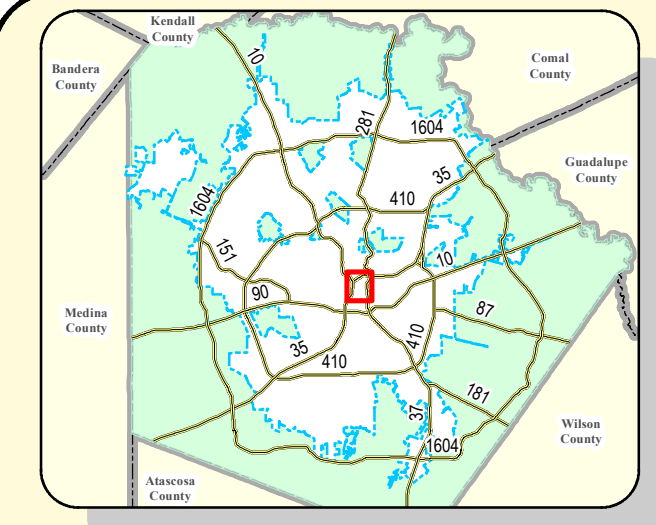
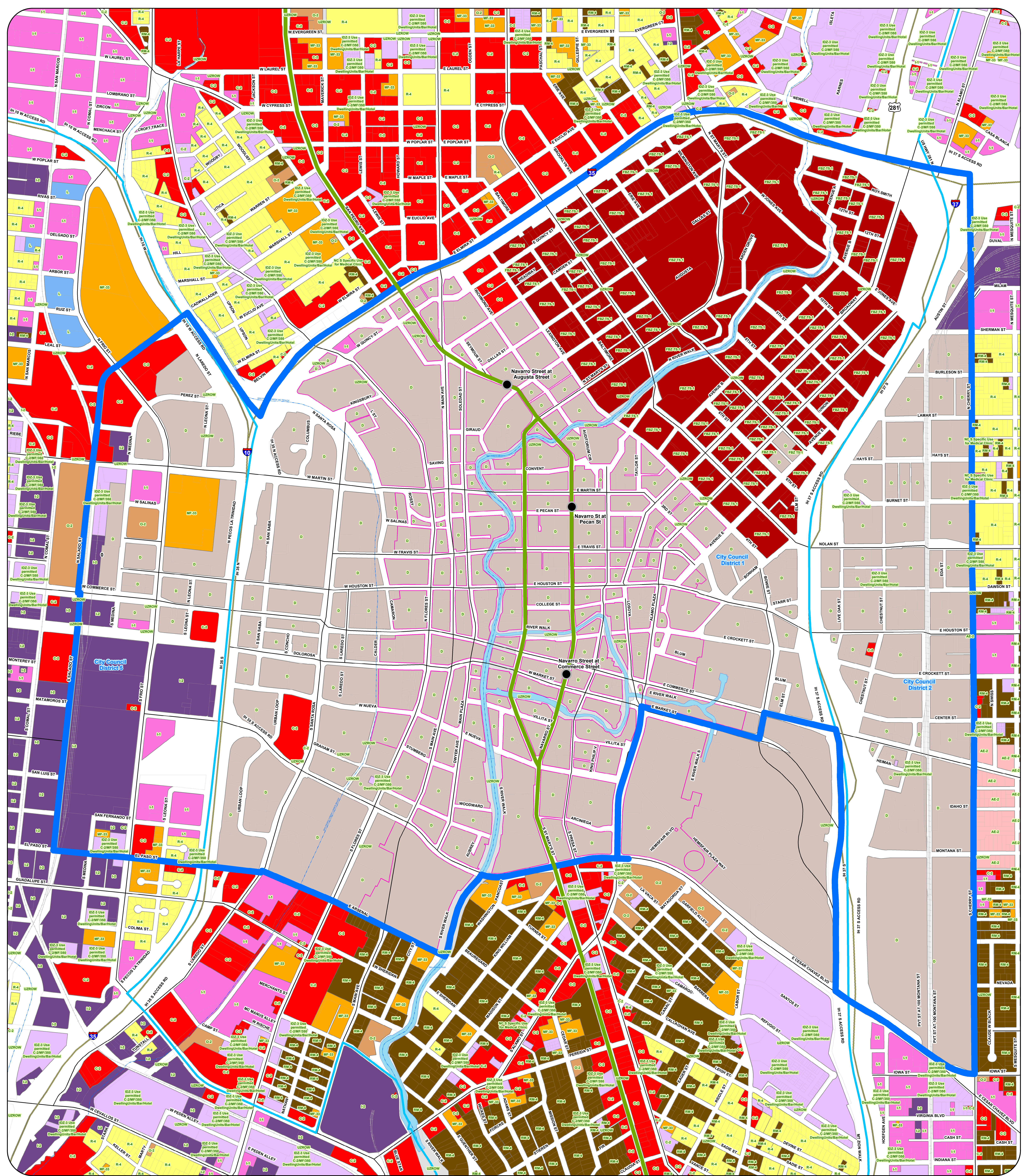
City of San Antonio
Information Technology Services Department
GIS Public Services Division
City Tower
100 W. Houston St., 18th floor
San Antonio, TX 78205



DRAFT

City of San Antonio 2024 CRAG Boundary to Interstate 35

Overlay Districts such as Airport Overlay, Neighborhood Conservation, Historic Overlay, Historic Landmarks, River Improvement Overlay, and Mission Protection Overlay, and any others are not shown on the map



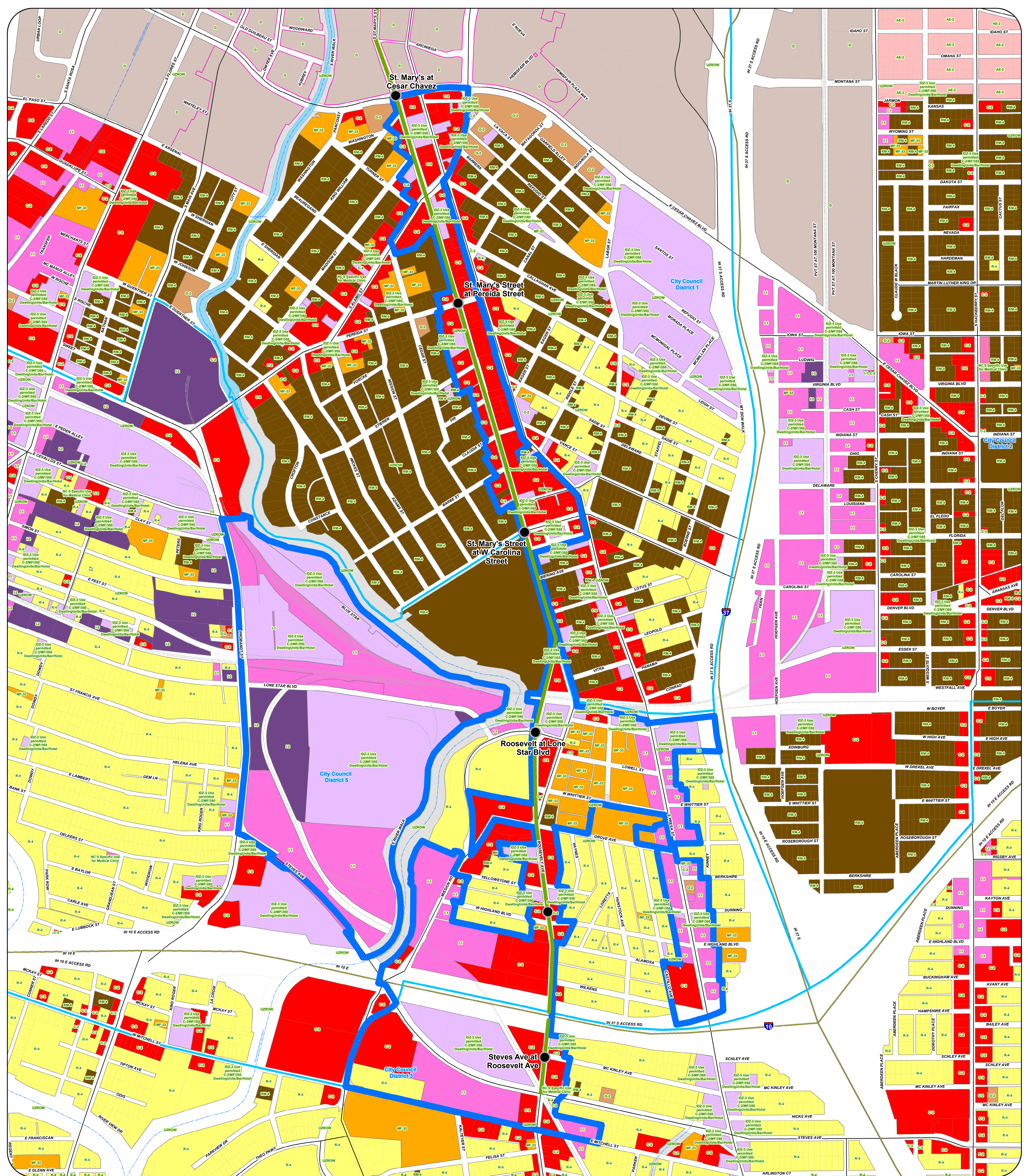
- | | | | | | | | |
|------------------------------------|------------------------------------|-------------------------------|----------------------------------|------------------------------|---------------------|-----------------------|----------------|
| Current Zoning | General Industrial District | Multi-Family District | Neighborhood Commercial District | Form Base Zoning District | ART NS Stations | City of San Antonio | Military Bases |
| Multi-Family District | Heavy Industrial District | Residential Mixed District | Downtown District | Office District | CRAG Boundary | City Council Boundary | Creeks |
| Commercial District | Office District | Manufactured Housing District | General Industrial District | Resource Protection District | ART Corridor | Cities and Towns | Lakes |
| Downtown District | Form Base Zoning District | Mixed Use District | Heavy Industrial District | Unzoned Right of Way | TOD Station Buffers | Bexar County | |
| Residential Single-Family District | Residential Single-Family District | Commercial District | Infill Development Zone | Downtown Business District | | | |

Data Source: City of San Antonio Enterprise GIS, Bexar Metro 911, Bexar Appraisal District
This Geographic Information System Product, received from the City of San Antonio is provided "as is" without warranty of any kind, and the City of San Antonio expressly disclaims all express and implied warranties, including but not limited to the implied warranties of merchantability and fitness for a particular purpose. The City of San Antonio does not warrant, guarantee, or make any representations regarding the use, or the results of the use, of the information provided to you by the City of San Antonio in terms of correctness, accuracy, reliability, timeliness or otherwise. The entire risk as to the results and performance of any information obtained from the City of San Antonio is entirely assumed by the recipient.
Please contact the responsible City of San Antonio Department for specific determinations.
Map Created by: g01173
Map Revision: 01/2024
Map Last Edited: 10/10/2024
PDF Filename: Downtown.pdf

DRAFT City of San Antonio 2024 Downtown

0 0.125 0.25 Miles

City of San Antonio
Information Technology Services Department
GIS Public Services Division
100 W. Houston St., 15th floor
San Antonio, TX 78205



Current Zoning

- Residential Single-Family District
- Multi-Family District
- Residential Mixed District

- Manufactured Housing District
- Mixed Use District
- Commercial District
- Neighborhood Commercial District

- Downtown District
- General Industrial District
- Heavy Industrial District
- Infill Development Zone
- Form Base Zoning District
- Office District
- Resource Protection District
- Unzoned Right of Way
- Downtown Business District

- ART NS Stations
- TOD Applicability Line
- CRAG Boundary
- ART Corridor

- City of San Antonio
- City Council Boundary
- Cities and Towns
- Bexar County

- Military Bases
- Creeks
- Lakes

Overlay Districts such as Airport Overlay, Neighborhood Conservation, Historic Overlay, River Improvement Overlay, and Mission Protection Overlay, and any others are not shown on the map

Data Source: City of San Antonio Enterprise GIS, Bexar Metro 911, Bexar Appraisal District
This Geographic Information System Product, received from the City of San Antonio is provided "as is" without warranty of any kind, and the City of San Antonio expressly disclaims all express and implied warranties, including but not limited to the implied warranties of merchantability and fitness for a particular purpose. The City of San Antonio does not warrant, guarantee, or make any representations regarding the use, or the results of the use, of the information provided to you by the City of San Antonio in terms of correctness, accuracy, reliability, timeliness or otherwise. The entire risk as to the results and performance of any information obtained from the City of San Antonio is entirely assumed by the recipient. Please contact the responsible City of San Antonio Department for specific determinations.
Map Created by: g01173
Map Data Source: City of San Antonio Department of Transportation/ART_01/2023/04/Cesar Chavez to Steves.mxd
Map Last Edited: 12/2/2024
PDF Filename: Cesar Chavez to Steves.pdf

DRAFT

City of San Antonio 2024

Cesar Chavez to Steves

City of San Antonio
Information Technology Services Department
GIS Public Services Division
100 W. Houston St., 18th floor
San Antonio, TX 78205

