

ROOT PROTECTION ZONE NOTE:

ANY TREES THAT ARE SHOWN TO BE PRESERVED BUT REMOVED DURING CONSTRUCTION DUE TO ROOT PROTECTION ZONE CONFLICT SHALL BE MITIGATED WITH EQUAL INCHES AS PER SECTION 35-477(n) NOTIFICATION AND APPROVAL OF THE CITY ARBORIST IS REQUIRED IF CHANGES NEED TO BE MADE TO AN APPROVED TREE PRESERVATION PLAN. APPROVAL OF THE CHANGES MUST BE RECEIVED FROM THE CITY ARBORIST, IN WRITING, BEFORE COMMENCEMENT OF ANY WORK THAT IS THE SUBJECT OF THE CHANGE OR FIELD ADJUSTMENT.

IMPORTANT NOTE - TOWNHOME LOTS:

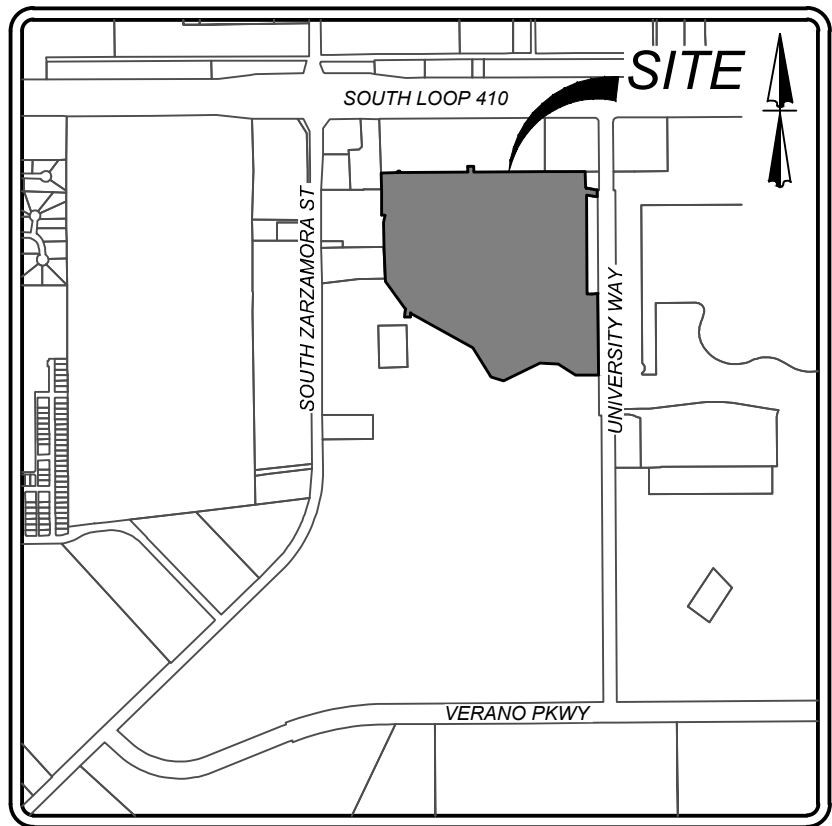
1 - MINIMUM - 1.5 INCH CALIPER MEDIUM CANOPY SHADE TREE TO BE PLANTED PER LOT.

IMPORTANT NOTE - PHASE 1:

SINGLE FAMILY LOTS:
TO TWO - 2.5 INCH CALIPER NATIVE MEDIUM TO LARGE SHADE TREES REQUIRED PER LOT AT BUILDING STAGE FOR MITIGATION REQUIREMENTS.

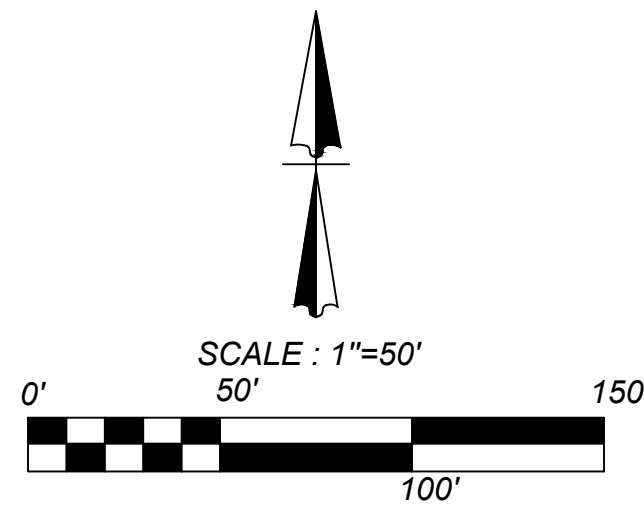
TREE CANOPY DEFERMENT:

TREE CANOPY REQUIREMENTS WILL BE DEFERRED TO THE BUILDING PERMITTING STAGE.



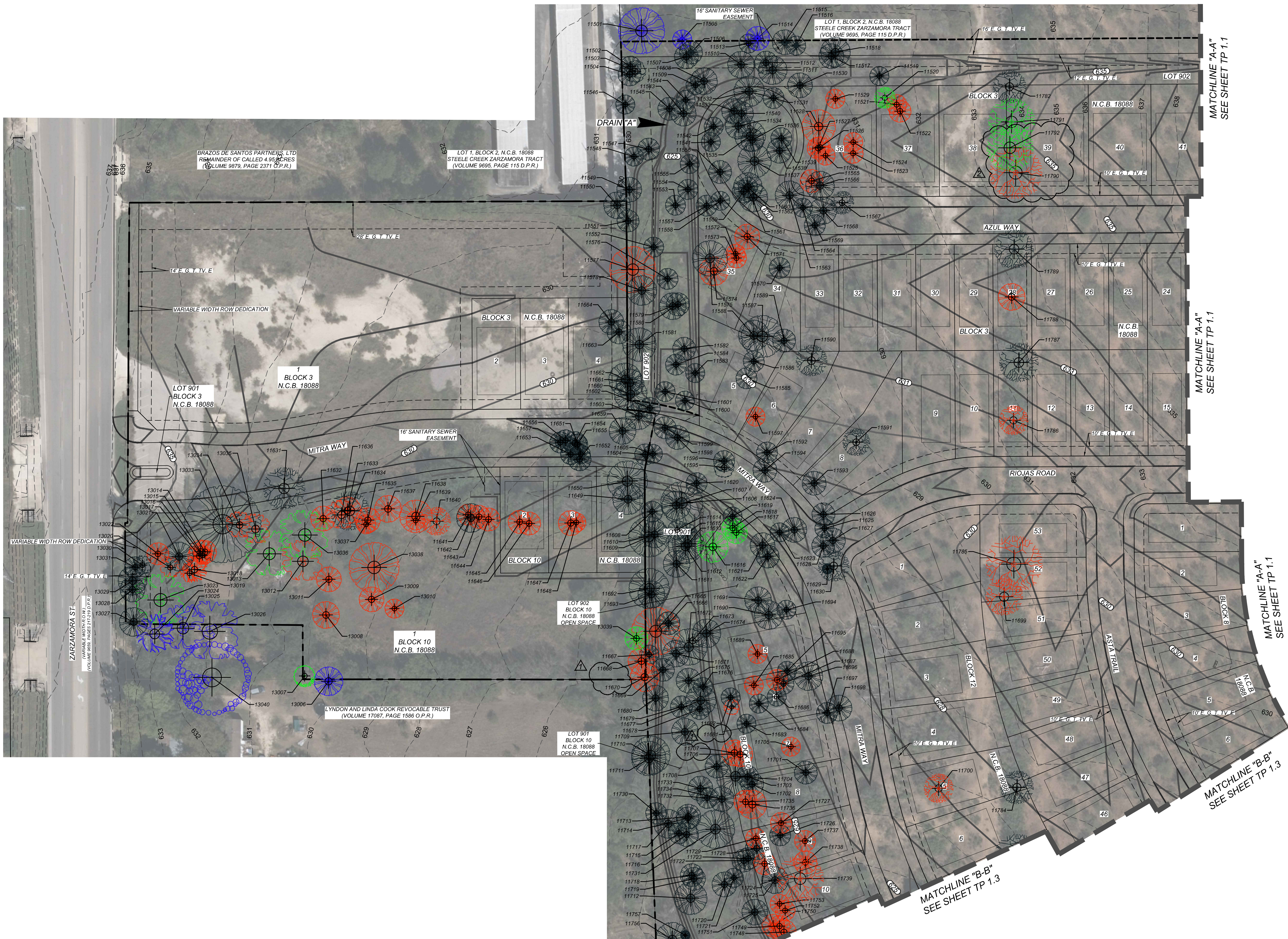
LOCATION MAP

N.T.S.



LEGEND

- PROJECT LIMITS
- EXISTING CONTOUR
- PROPOSED CONTOUR
- PROTECTED/HERITAGE TREES PRESERVED
- PROTECTED/HERITAGE TREES REMOVED
- EXEMPT TREES (WITHIN R.O.W., EASEMENTS, NON-PROTECTED)
- PROTECTED TREES (NOT WITHIN PLATTED LIMITS)
- PROTECTED/HERITAGE TREES PRESERVED WITHIN THE FLOODPLAIN
- PROTECTED/HERITAGE TREES PRESERVED WITHIN THE 30' RIPARIAN BUFFER
- E.G.T.&T.V.E.
- 30' RIPARIAN BUFFER
- 100-YEAR FLOODPLAIN BOUNDARY
- LOT PAD



VIDA SAN ANTONIO PHASE 1
SAN ANTONIO, TEXAS
MASTER TREE PRESERVATION PLAN (A/P 2575489)

20-11800049

JOB NO. 391-10-01

DATE: DECEMBER 2019

DRAWN/MH CHECKED/OE

SHEET NUMBER:

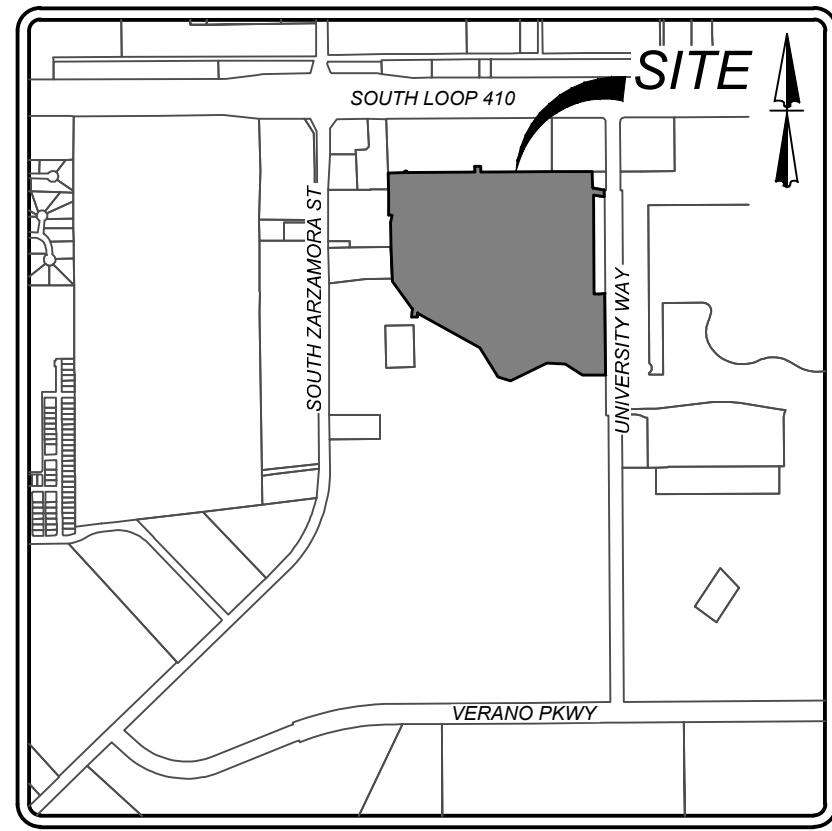
TP 1.0

IMPORTANT NOTE - TOWNHOME LOTS:
1 - MINIMUM - 1.5 INCH CALIPER MEDIUM CANOPY SHADE TREE TO BE PLANTED PER LOT.

IMPORTANT NOTE - PHASE 1:
SINGLE FAMILY LOTS:
(2) TWO - 2.5 INCH CALIPER NATIVE MEDIUM TO LARGE SHADE TREES REQUIRED PER LOT AT BUILDING STAGE FOR MITIGATION REQUIREMENTS.

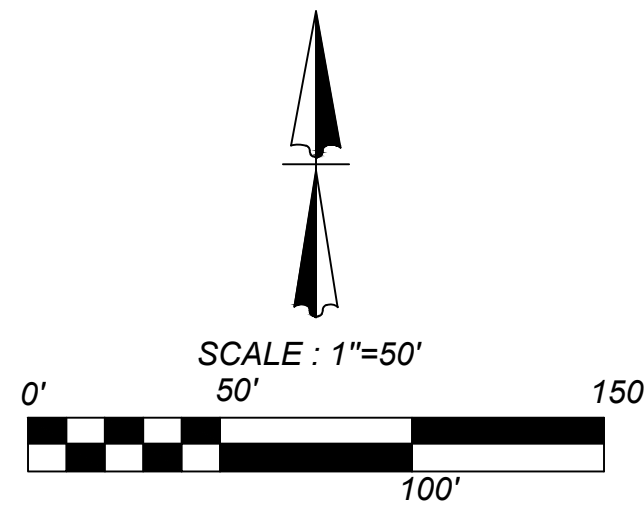
TREE CANOPY DEFERMENT:
TREE CANOPY REQUIREMENTS WILL BE DEFERRED TO THE BUILDING PERMITTING STAGE.

ROOT PROTECTION ZONE NOTE:
ANY TREES THAT ARE SHOWN TO BE PRESERVED BUT REMOVED DURING CONSTRUCTION DUE TO ROOT PROTECTION ZONE CONFLICT SHALL BE MITIGATED WITH EQUAL INCHES. AS PER SECTION 35-47(h) NOTIFICATION AND APPROVAL OF THE CITY ARBORIST IS REQUIRED IF CHANGES NEED TO BE MADE TO AN APPROVED TREE PRESERVATION PLAN. APPROVAL OF THE CHANGES MUST BE RECEIVED FROM THE CITY ARBORIST, IN WRITING, BEFORE COMMENCEMENT OF ANY WORK THAT IS THE SUBJECT OF THE CHANGE OR FIELD ADJUSTMENT.



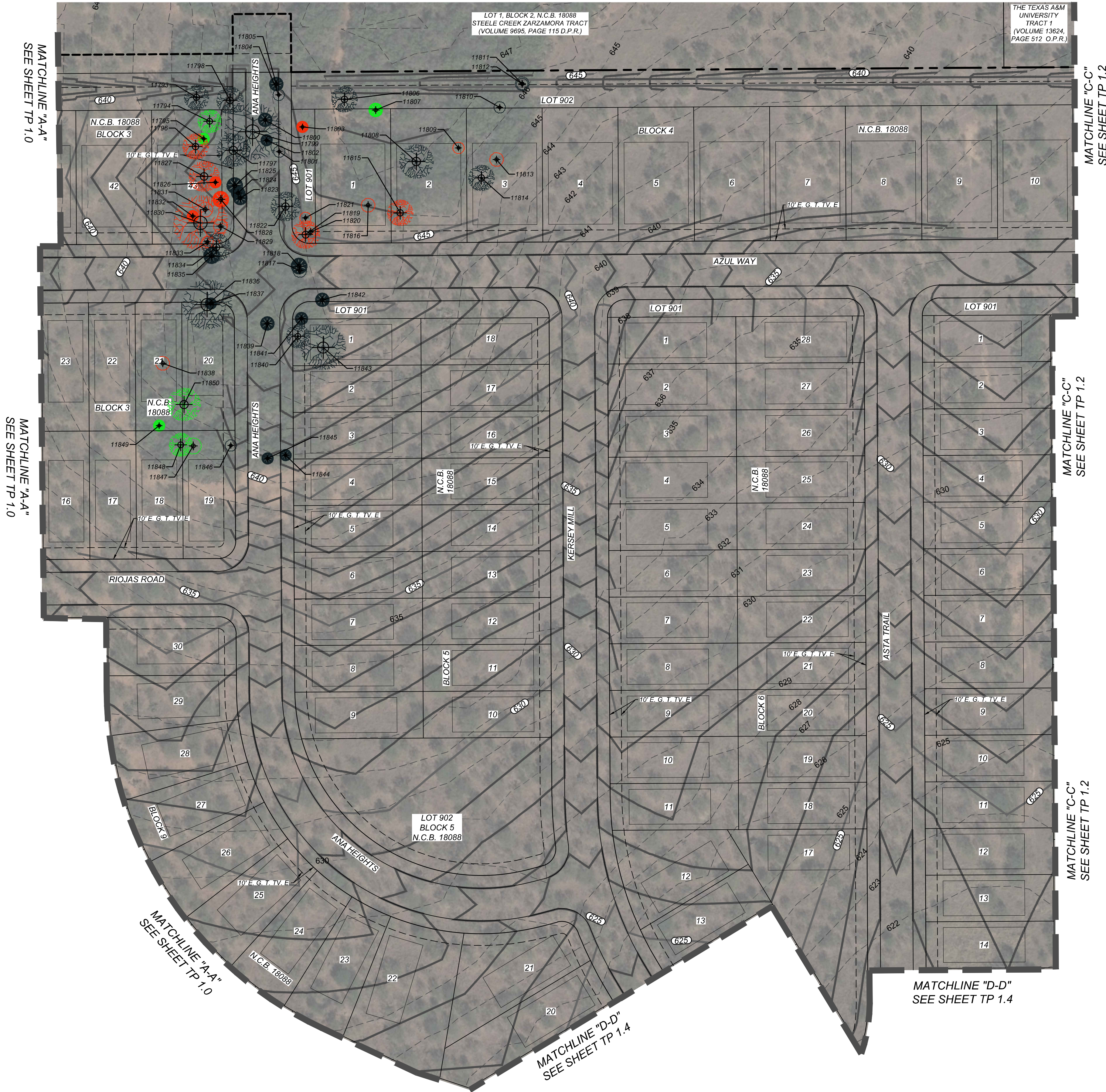
LOCATION MAP

N.T.S.



LEGEND

- PROJECT LIMITS
- EXISTING CONTOUR
- PROPOSED CONTOUR
- PROTECTED/HERITAGE TREES PRESERVED
- PROTECTED/HERITAGE TREES REMOVED
- EXEMPT TREES (WITHIN R.O.W., EASEMENTS, NON-PROTECTED)
- PROTECTED TREES (NOT WITHIN PLATTED LIMITS)
- PROTECTED/HERITAGE TREES PRESERVED WITHIN THE FLOODPLAIN
- PROTECTED/HERITAGE TREES PRESERVED WITHIN THE 30' RIPARIAN BUFFER
- E.G.T.&TV.E. ELECTRIC, GAS, TELEPHONE, CABLE T.V. EASEMENT
- 30' RIPARIAN BUFFER
- 100-YEAR FLOODPLAIN BOUNDARY
- LOT PAD



VIDA SAN ANTONIO PHASE 1A & 1B
SAN ANTONIO, TEXAS
MASTER TREE PRESERVATION PLAN (A/P 2575489)

20-11800049

JOB NO. 391-10-01

DATE: DECEMBER 2019

DRAWN:MH CHECKED:OE

SHEET NUMBER:

TP 1.1

K&W
ENGINEERS & SURVEYING
P.O. Box 10251
San Antonio, TX 78211
Phone # (210) 878-8444 • Fax # (210) 878-8441
TBP# Firm #: 9513 • TBP# S Firm #: 1012300

ISSUE DATE:

REVISIONS:

ROOT PROTECTION ZONE NOTE:

ANY TREES THAT ARE SHOWN TO BE PRESERVED BUT REMOVED DURING CONSTRUCTION DUE TO ROOT PROTECTION ZONE CONFLICT SHALL BE MITIGATED WITH EQUAL INCHES. AS PER SECTION 35-477(h) NOTIFICATION AND APPROVAL OF THE CITY ARBORIST IS REQUIRED IF CHANGES NEED TO BE MADE TO AN APPROVED TREE PRESERVATION PLAN. APPROVAL OF THE CHANGES MUST BE RECEIVED FROM THE CITY ARBORIST, IN WRITING, BEFORE COMMENCEMENT OF ANY WORK THAT IS THE SUBJECT OF THE CHANGE OR FIELD ADJUSTMENT.

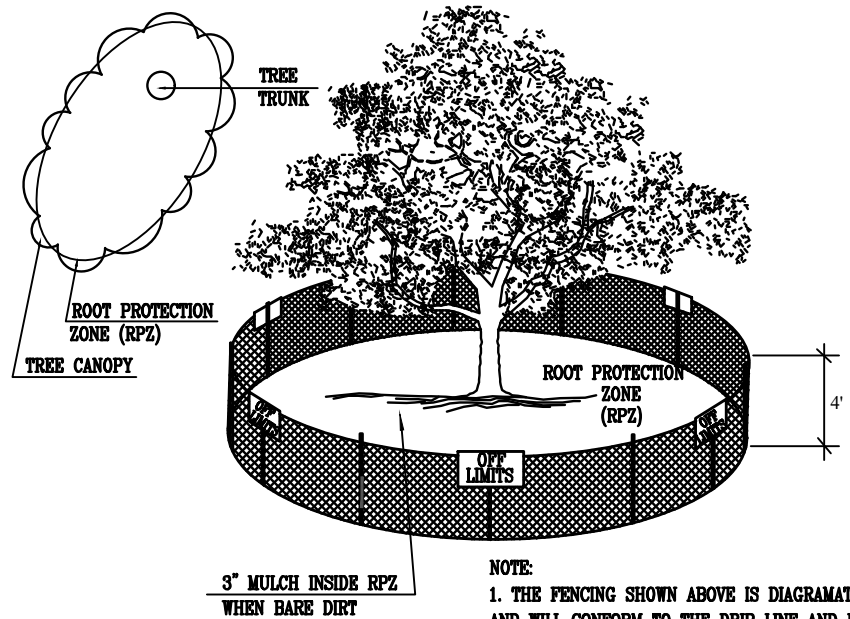
TREE CANOPY DEFERMENT.
TREE CANOPY REQUIREMENTS
WILL BE DEFERRED TO THE
BUILDING PERMITTING STAGE.

IMPORTANT NOTE - TOWNHOME LOTS:

1 - MINIMUM - 1.5 INCH CALIPER MEDIUM CANOPY SHADE TREE TO BE PLANTED PER LOT.

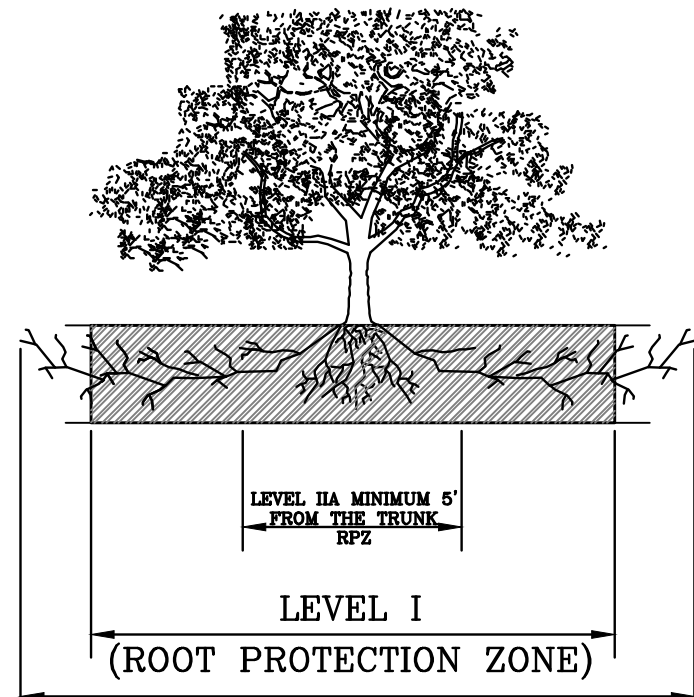
IMPORTANT NOTE - PHASE 1:

SINGLE FAMILY LOTS:
(2) TWO - 2.5 INCH CALIPER NATIVE MEDIUM TO LARGE SHADE TREES REQUIRED PER LOT AT BUILDING STAGE FOR MITIGATION REQUIREMENTS.



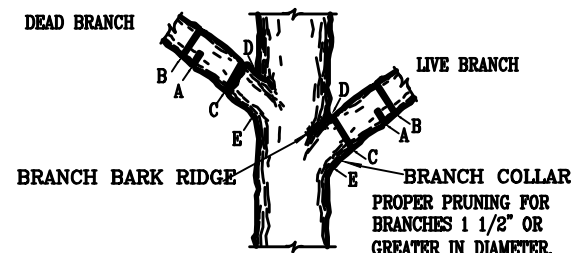
NOTE:
1. TREE FENCING SHOWN ABOVE IS DIAGRAMATIC ONLY AND WILL CONFORM TO THE DRIP LINE AND LIMITED TO PROJECT BOUNDARY.
2. FOR ACCEPTABLE FENCING MATERIALS SEE SPECIFICATIONS.

N. T. S.



ROOT PROTECTION ZONE - THE ROOT PROTECTION ZONE IS A CIRCULAR AREA AROUND A TREE THAT IS BASED ON THE DIAMETER OF THE TREE. EACH 1 INCH DIAMETER OF THE TREE EQUALS 1 FOOT RADIUS FOR ROOT PROTECTION ZONE.

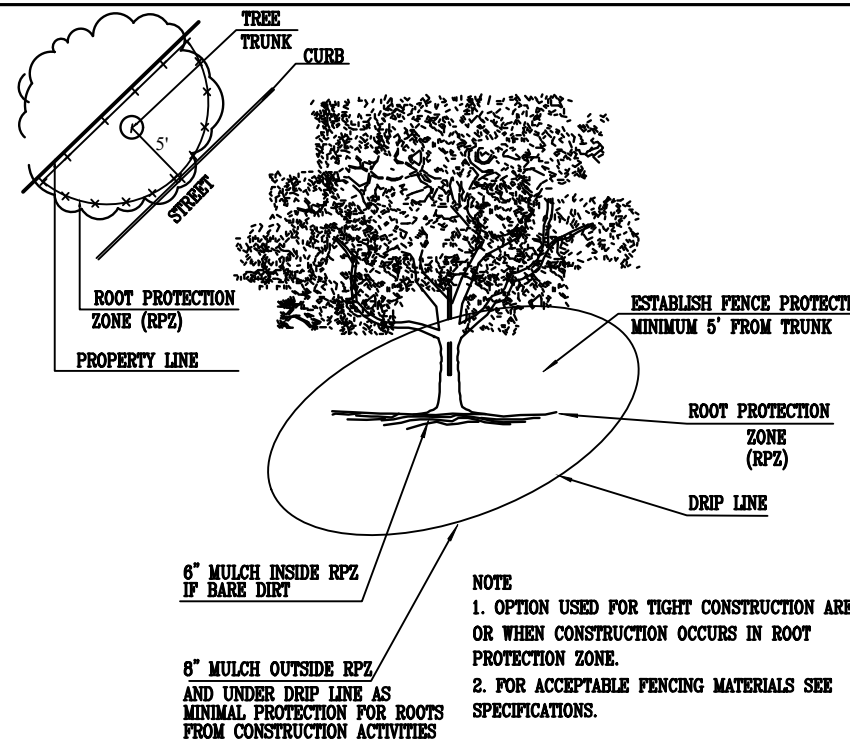
N. T. S.



NOTE: DO NOT CUT FROM D TO E.
A. FIRST CUT - TO PREVENT THE BARK FROM BEING PERKED WHEN THE BRANCH FALLS.
B. SECOND CUT - TO REDUCE THE WEIGHT OF BRANCH.
C. FINAL CUT - ALLOW FOR HEALING COLLAR BUT NO STUBS.
D. BRANCH RIDGES - IDENTIFY PROPERLY BRANCH RIDGES WHICH ARE SITS FOR BRACK.

FOR OAKS ONLY: PAINT ALL WOUNDS OR CUTS WITH PRUNING PAINT WITHIN 20 MIN TO PREVENT THE SPREAD OF OAK WILT.

N. T. S.



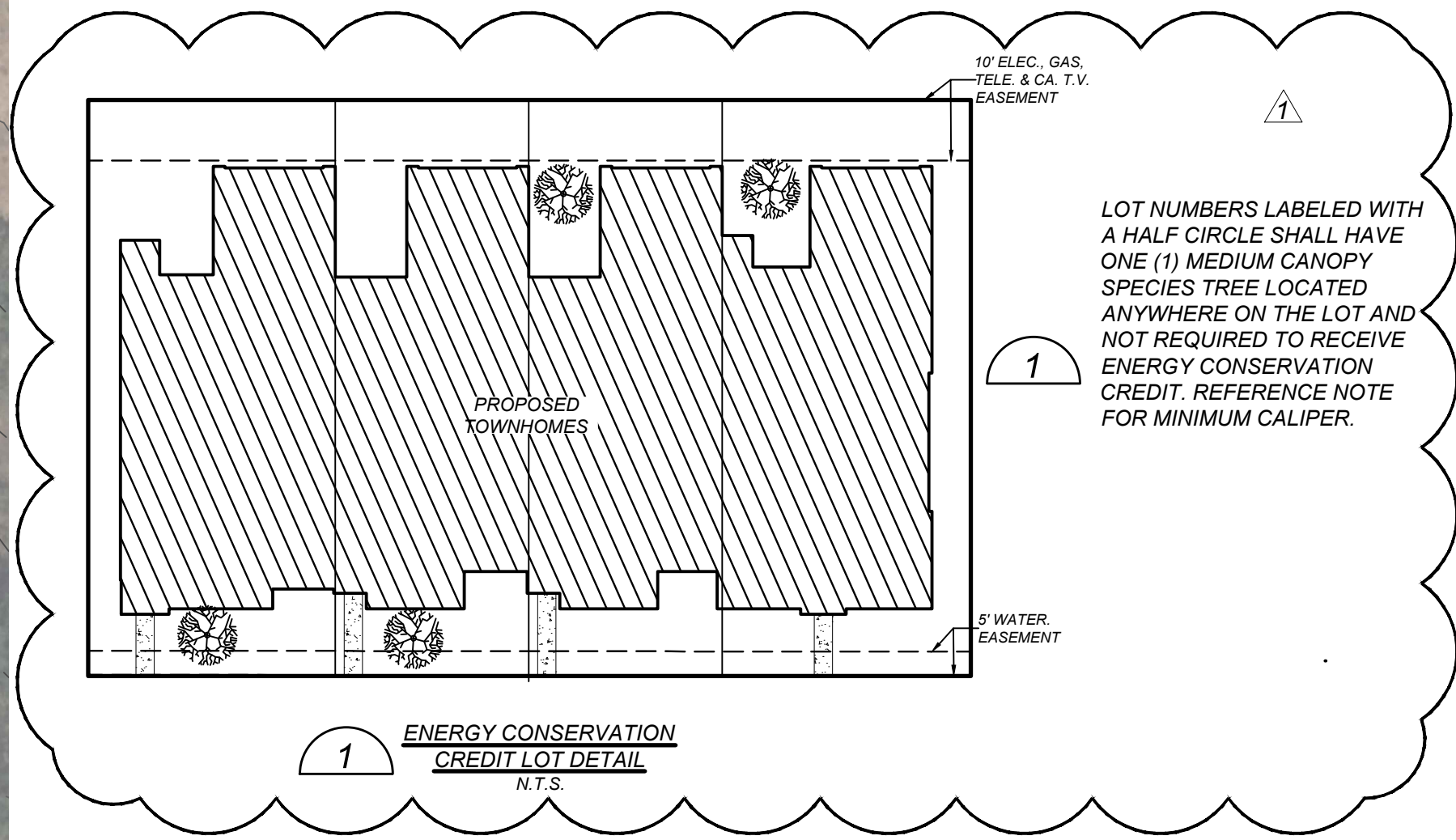
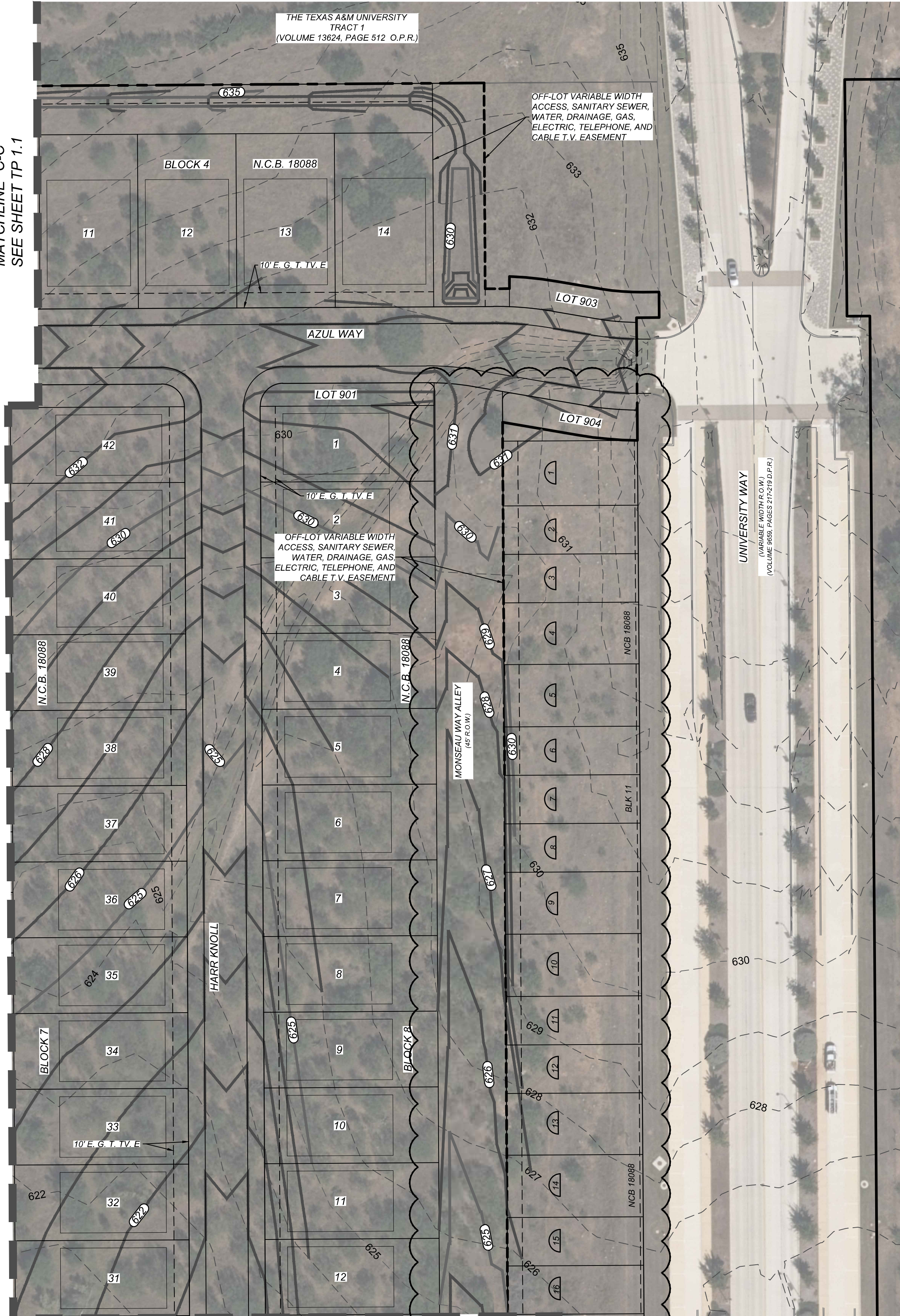
NOTE:
1. OPTION USED FOR TIGHT CONSTRUCTION AREAS OR WHEN CONSTRUCTION OCCURS IN ROOT PROTECTION ZONE.
2. FOR ACCEPTABLE FENCING MATERIALS SEE SPECIFICATIONS.

N. T. S.

MATCHLINE "C-C"
SEE SHEET TP 1.1

MATCHLINE "C-C"
SEE SHEET TP 1.1

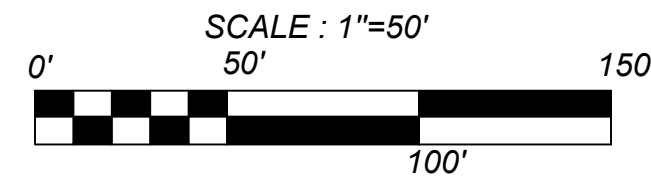
MATCHLINE "F-F"
SEE SHEET TP 1.1



LOT NUMBERS LABELED WITH A HALF CIRCLE SHALL HAVE ONE (1) MEDIUM CANOPY SPECIES TREE LOCATED ANYWHERE ON THE LOT AND NOT REQUIRED TO RECEIVE ENERGY CONSERVATION CREDIT. REFERENCE NOTE FOR MINIMUM CALIPER.

1 ENERGY CONSERVATION CREDIT LOT DETAIL
N.T.S.

LOCATION MAP
N.T.S.

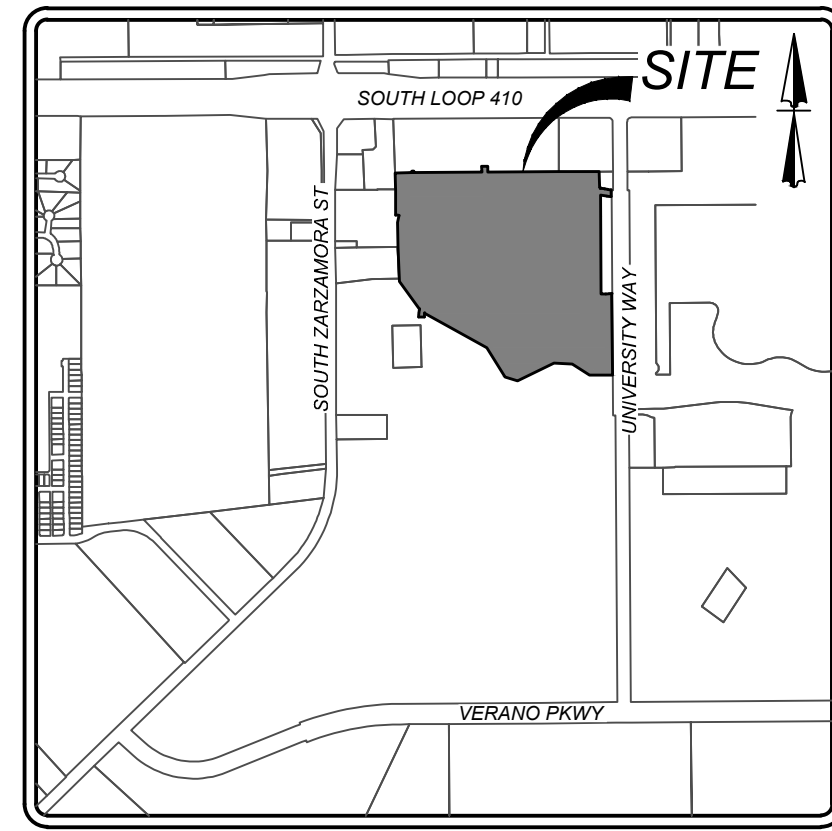


LEGEND

- PROJECT LIMITS
- EXISTING CONTOUR
- PROPOSED CONTOUR
- PROTECTED/HERITAGE TREES PRESERVED
- PROTECTED/HERITAGE TREES REMOVED
- EXEMPT TREES (WITHIN R.O.W., EASEMENTS, NON-PROTECTED)
- PROTECTED TREES (NOT WITHIN PLATTED LIMITS)
- PROTECTED/HERITAGE TREES PRESERVED WITHIN THE FLOODPLAIN
- PROTECTED/HERITAGE TREES PRESERVED WITHIN THE 30' RIPARIAN BUFFER
- E.G.T.&T.V.E.
- 30' RIPARIAN BUFFER
- 100-YEAR FLOODPLAIN BOUNDARY
- LOT PAD

TREE PROTECTION NOTES

- A ROOT PROTECTION ZONE WILL BE ESTABLISHED AROUND EACH TREE OR ANY VEGETATION TO BE PRESERVED TO MEET THE LANDSCAPE OR TREE PRESERVATION ORDINANCES. THE ROOT PROTECTION ZONE SHALL BE AN AREA DEFINED BY THE RADIUS EXTENDING OUTWARD FROM THE TRUNK OF THE TREE A DISTANCE OF ONE (1) LINEAR FOOT FOR EACH INCH DIAMETER INCH AT BREAST HEIGHT (4.5) OF THE TREE. A 10-INCH DIAMETER TREE WILL HAVE A 10 FOOT RADIUS ROOT PROTECTION ZONE.
- NO WORK SHALL BEGIN WHERE TREE PROTECTION FENCING HAS NOT BEEN COMPLETED AND APPROVED. TREE PROTECTION FENCING SHALL BE INSTALLED, MAINTAINED AND REPAIRED BY THE CONTRACTOR DURING CONSTRUCTION. THE FENCING WILL BE A MINIMUM OF 4' HEIGHT.
- ALL ROOTS LARGER THAN ONE-INCH IN DIAMETER ARE TO BE CUT CLEANLY AND OAK WOUNDS PAINTED WITHIN 30 MINUTES.
- EXPOSED ROOTS SHALL BE COVERED AT THE END OF THE WORK DAY USING TECHNIQUES SUCH AS COVERING WITH SOIL, MULCH OR WET BURLAP.
- NO EQUIPMENT, VEHICLES OR MATERIALS SHALL BE OPERATED OR STORED WITHIN THE ROOT PROTECTION ZONE. NO CLEAN-OUT AREAS WILL BE CONSTRUCTED SO THAT THE MATERIAL WILL BE IN OR MIGRATE TO THE ROOT PROTECTION ZONE.
- NO GRADE CHANGE MORE THAN 3" IS ALLOWED WITHIN THE ROOT PROTECTION ZONE.
- ROOTS OR BRANCHES IN CONFLICT WITH CONSTRUCTION SHALL BE CUT CLEANLY ACCORDING TO PROPER PRUNING METHODS. ALL OAK WOUNDS SHALL BE PAINTED WITHIN 30 MINUTES TO PREVENT OAK WILT INFECTION.
- ANY TREE REMOVAL SHALL BE APPROVED BY THE CITY OF SAN ANTONIO.
- TREES WHICH ARE DAMAGED OR LOST DUE TO THE CONTRACTOR'S NEGLIGENCE DURING CONSTRUCTION SHALL BE MITIGATED.
- TREES MUST BE MAINTAINED IN GOOD HEALTH THROUGHOUT THE CONSTRUCTION PROCESS. MAINTENANCE MAY INCLUDE WATERING THE ROOT PROTECTION ZONE AND OR WASHING FOLIAGE.
- NO WIRES, NAILS OR OTHER MATERIALS MAY BE ATTACHED TO PROTECTED TREES.



VIDA SAN ANTONIO PHASE 1A & 1B
SAN ANTONIO, TEXAS
MASTER TREE PRESERVATION PLAN (A/P 2575489)

20-11800049

JOB NO. 391-10-01

DATE: DECEMBER 2019

DRAWN/MH CHECKED/OE

SHEET NUMBER:

TP 1.2

KFW
ENGINEERS & SURVEYING
10000 N. LOOP WEST, SUITE 1000
DALLAS, TEXAS 75244
Phone # (214) 978-8444 • Fax # (214) 978-8441
TBE Firm # 9513 • TBE Firm # 1012300

ISSUE DATE: 03/22/23
REVISIONS: VIDA PHASE 1 TOWNHOMES ADDED.

Date: May 21, 2024, 9:25am User ID: obiel.montalvo
File: N:\391\10\01\Design\GWA\TREES\PP3911001_Amendment_1_230321.dwg

ROOT PROTECTION ZONE NOTE:

ANY TREES THAT ARE SHOWN TO BE PRESERVED BUT REMOVED DURING CONSTRUCTION DUE TO ROOT PROTECTION ZONE CONFLICT SHALL BE MITIGATED WITH EQUAL INCHES. AS PER SECTION 35-477(h) NOTIFICATION AND APPROVAL OF THE CITY ARBORIST IS REQUIRED IF CHANGES NEED TO BE MADE TO AN APPROVED TREE PRESERVATION PLAN. APPROVAL OF THE CHANGES MUST BE RECEIVED FROM THE CITY ARBORIST, IN WRITING, BEFORE COMMENCEMENT OF ANY WORK THAT IS THE SUBJECT OF THE CHANGE OR FIELD ADJUSTMENT.

IMPORTANT NOTE - TOWNHOME LOTS:

1 - MINIMUM - 1.5 INCH CALIPER MEDIUM CANOPY SHADE TREE TO BE PLANTED PER LOT.

IMPORTANT NOTE - PHASE 1:

SINGLE FAMILY LOTS:

(2) TWO - 2.5 INCH CALIPER NATIVE MEDIUM TO LARGE SHADE TREES REQUIRED PER LOT AT BUILDING STAGE FOR MITIGATION REQUIREMENTS.

TREE CANOPY DEFERMENT:

TREE CANOPY REQUIREMENTS WILL BE DEFERRED TO THE BUILDING PERMITTING STAGE.

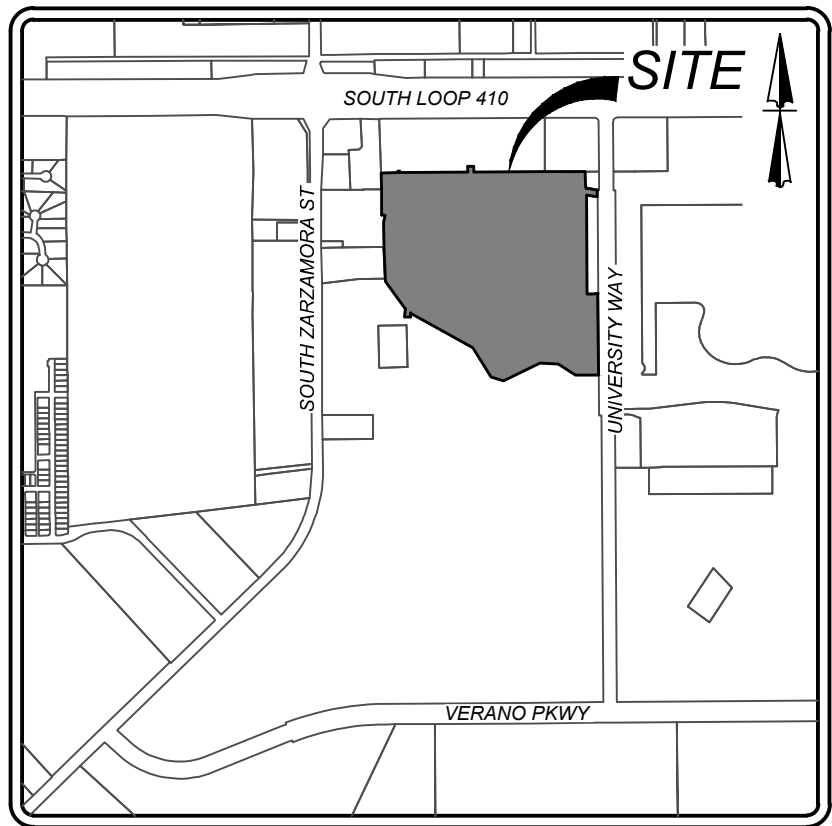
MATCHLINE "D-D"
SEE SHEET TP 1.1

MATCHLINE "F-F"
SEE SHEET TP 1.2

MATCHLINE "E-E"
SEE SHEET TP 1.3

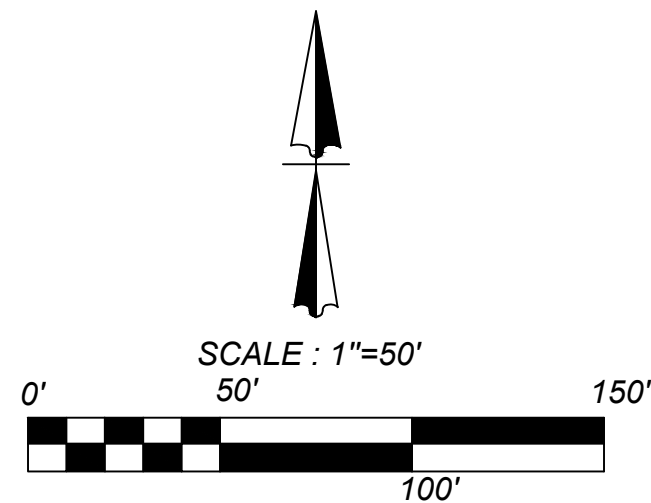
MATCHLINE "E-E"
SEE SHEET TP 1.3

MATCHLINE "E-E"
SEE SHEET TP 1.3



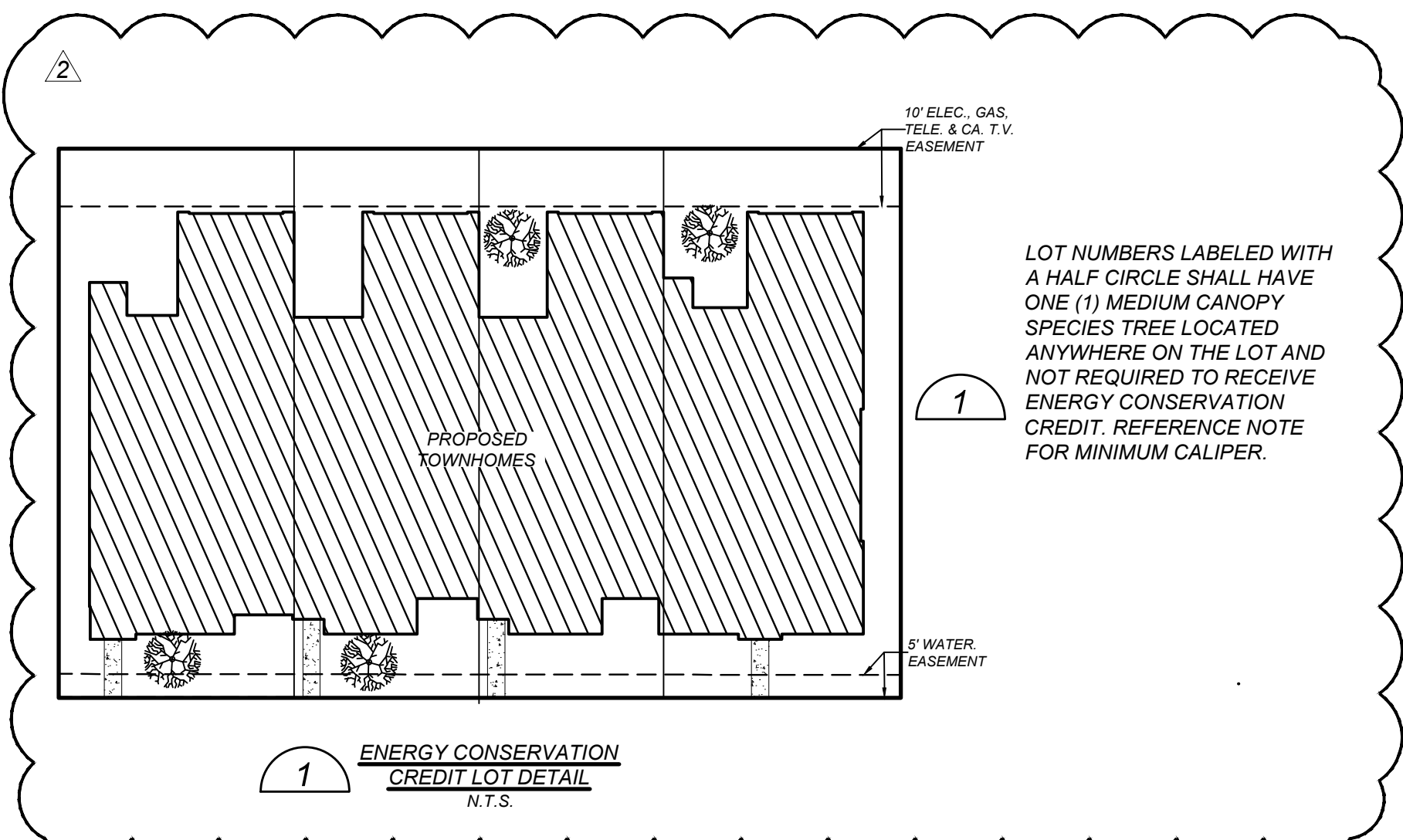
LOCATION MAP

N.T.S.



LEGEND

- PROJECT LIMITS
- EXISTING CONTOUR
- PROPOSED CONTOUR
- PROTECTED/HERITAGE TREES PRESERVED
- PROTECTED/HERITAGE TREES REMOVED
- EXEMPT TREES (WITHIN R.O.W., EASEMENTS, NON-PROTECTED)
- PROTECTED TREES (NOT WITHIN PLATTED LIMITS)
- PROTECTED/HERITAGE TREES PRESERVED WITHIN THE FLOODPLAIN
- PROTECTED/HERITAGE TREES PRESERVED WITHIN THE 30' RIPARIAN BUFFER
- E.G.T.&T.V.E.
- 30' RIPARIAN BUFFER
- 100-YEAR FLOODPLAIN BOUNDARY
- LOT PAD



VIDA SAN ANTONIO PHASE 1A & 1B
SAN ANTONIO, TEXAS
MASTER TREE PRESERVATION PLAN (A/P 2575489)

20-11800049

JOB NO. 391-10-01

DATE: DECEMBER 2019

DRAWN/MH CHECKED/OE

SHEET NUMBER:

TP 1.4

K&W
ENGINEERS & SURVEYING
Phone # (210) 878-8444 • Fax # (210) 878-8441
TBP# Firm #: 9513 • TBP# S Firm #: 1012300

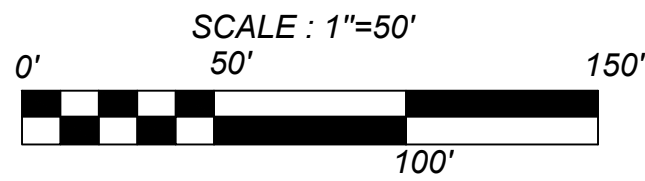
REVISIONS	ISSUE DATE
1. VIDA PHASE 1 TOWNHOMES ADDED, PRESERVED AND ARE CONSIDERED IN DECLINE	03/22/23
2. IDENTIFIED UNDERSIZED SIGNIFICANT SPECIES ADDED, SIGNIFICANT TREE SPECIES, CYCLONE FENCING PROVIDED	07/24/23
3. ADDITION OF AGENCY COMMENTS	09/20/24

MATCHLINE "E-E" SEE SHEET TP 1.3

MATCHLINE "G-G"
SEE THIS SHEET

MATCHLINE "H-H"
SEE THIS SHEET

LOCATION MAP
N.T.S.



LEGEND

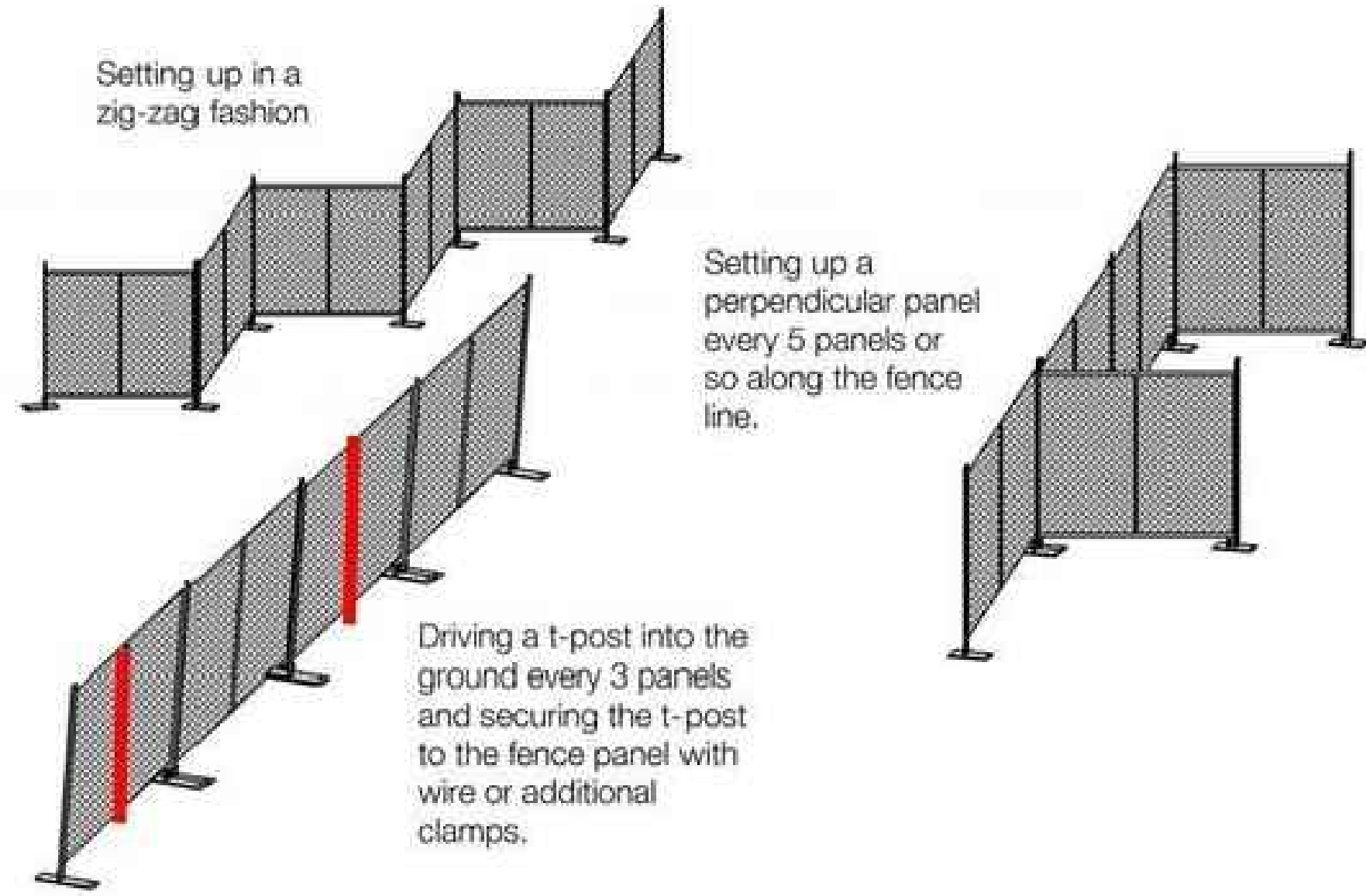
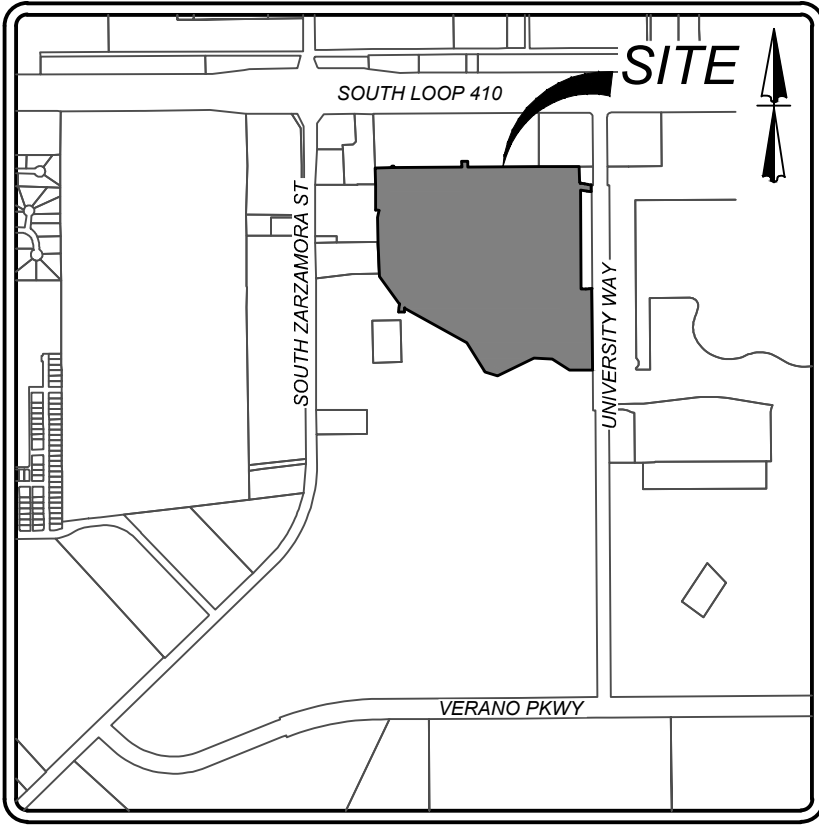
- PROJECT LIMITS
- EXISTING CONTOUR
- PROPOSED CONTOUR
- PROTECTED/HERITAGE TREES PRESERVED
- PROTECTED/HERITAGE TREES REMOVED
- EXEMPT TREES (WITHIN R.O.W., EASEMENTS, NON-PROTECTED)
- PROTECTED TREES (NOT WITHIN PLATTED LIMITS)
- PROTECTED/HERITAGE TREES PRESERVED WITHIN THE FLOODPLAIN
- PROTECTED/HERITAGE TREES PRESERVED WITHIN THE 30' RIPARIAN BUFFER
- E.G.T.&T.V.E.
- ELECTRIC, GAS, TELEPHONE, CABLE T.V. EASEMENT
- 30' RIPARIAN BUFFER
- 100-YEAR FLOODPLAIN BOUNDARY
- LOT PAD

TREE CANOPY DEFERMENT

TREE CANOPY REQUIREMENTS
WILL BE DEFERRED TO THE
BUILDING PERMITTING STAGE.

ROOT PROTECTION ZONE NOTE:

ANY TREES THAT ARE SHOWN TO BE PRESERVED BUT REMOVED DURING CONSTRUCTION DUE TO ROOT PROTECTION ZONE CONFLICT SHALL BE MITIGATED WITH EQUAL INCHES. AS PER SECTION 35-477(h) NOTIFICATION AND APPROVAL OF THE CITY ARBORIST IS REQUIRED IF CHANGES NEED TO BE MADE TO AN APPROVED TREE PRESERVATION PLAN. APPROVAL OF THE CHANGES MUST BE RECEIVED FROM THE CITY ARBORIST, IN WRITING, BEFORE COMMENCEMENT OF ANY WORK THAT IS THE SUBJECT OF THE CHANGE OR FIELD ADJUSTMENT.



CYCLONE FENCING DETAIL

PROPOSED SIGN TO BE PLACED ON TEMPORARY CYCLONE FENCING:

WARNING!

DO NOT MOVE FENCING
TREES PRESERVED BY SOUTHSTAR
VIOLATORS WILL BE PROSECUTED AND FINED UNDER
ORDINANCE 210-05-06-0376
CHAPTER 35-523, (j) (1) AND (k) (1 THRU 5 AND 7)
DO NOT REMOVE OR DAMAGE UNDER SEPARATE PENALTY

MATCHLINE "G-G"
SEE THIS SHEET

MATCHLINE "H-H"
SEE THIS SHEET



VIDA SAN ANTONIO PHASE 1A & 1B
SAN ANTONIO, TEXAS
MASTER TREE PRESERVATION PLAN (A/P 2575489)

20-11800049

JOB NO. 391-10-01

DATE: DECEMBER 2019

DRAWN:MH CHECKED:OE

SHEET NUMBER:

TP 1.5

KFW
ENGINEERS & SURVEYING
10000 Research Blvd., Suite 1000
Dallas, Texas 75231
Phone # (214) 978-8444 • Fax # (214) 978-8441
TBE Firm # 9513 • TBE S Firm # 1012300

ISSUE DATE
04/02/24

REVISIONS
CIVIL ENGINEERING
DETAIL ADDED

Date: May 31, 2024, 10:08am User ID: scruc
File: N:\3rd\10101\Design\CA\Trees\TP3511001_Amendment_230321.dwg

SIGNIFICANT TREE (10" - 23.5") INVENTORY TABLE				
TAG #	SPECIES	REMOVED	PRESERVED	FINAL CANOPY (SOFT)
11521	HACKBERRY	10.5	11	550
11522	HACKBERRY	11.5		
11523	HACKBERRY	10.5		
11524	HACKBERRY	10		
11525	HACKBERRY	10		
11526	HACKBERRY	11		
11527	HACKBERRY	11.5		
11528	HACKBERRY	17.5		
11529	HACKBERRY	10		
11565	HACKBERRY	12		
11571	HACKBERRY	13		
11572	HACKBERRY	10		
11573	HACKBERRY	10.5		
11574	HACKBERRY	15		
11597	HACKBERRY	10		
11616	HACKBERRY		16	875
11617	HACKBERRY		11.5	875
11618	HACKBERRY		11	875
11632	HACKBERRY	13		
11633	HACKBERRY	14		
11635	HACKBERRY	13		
11637	HACKBERRY	14		
11638	HACKBERRY	17		
11639	HACKBERRY	10		
11640	MESQUITE	14.5		
11641	HACKBERRY	11		
11643	HACKBERRY	12		
11644	HACKBERRY	12		
11645	HACKBERRY	12		
11646	HACKBERRY	12		
11647	HACKBERRY	13		
11649	HACKBERRY	10		
11668	HACKBERRY	14		
11670	HACKBERRY	15		
11685	HACKBERRY	10		
11688	HACKBERRY	11		
11689	HACKBERRY	10		
11699	MESQUITE	19		
11700	MESQUITE	15		
11705	HACKBERRY	10		
11706	HACKBERRY	13		
11707	HACKBERRY	13.5		
11724	HACKBERRY	11.5		
11727	HACKBERRY	11		
11729	HACKBERRY	10.5		
11735	HACKBERRY	12		
11736	HACKBERRY	15		
11737	HACKBERRY	11		
11738	HACKBERRY	12		
11740	MESQUITE	10		
11742	HACKBERRY	14		
11743	HACKBERRY	14		
11744	HACKBERRY	14		
11748	HACKBERRY	13		
11749	HACKBERRY	11		
11750	HACKBERRY	12		
11752	HACKBERRY	10.5		
11753	HACKBERRY	10		
11758	HACKBERRY	11		
11759	HACKBERRY	10		
11786	MESQUITE	15		
11788	HACKBERRY	14		
11794	MESQUITE		10	550
11796	MESQUITE	11		
11815	MESQUITE	11		
11819	MESQUITE	12		
11827	MESQUITE	13		
11830	MESQUITE	23		
11848	MESQUITE		10	550
11850	MESQUITE		14	550
11851	HACKBERRY	20		
11852	HACKBERRY	19		
11853	HACKBERRY	15		
11859	MESQUITE	15		
11867	HUISACHE	10		
11888	MESQUITE	11		
11889	MESQUITE	12		
11894	MESQUITE	16		
11900	MESQUITE	10		
11902	MESQUITE	14		
11903	MESQUITE	11		
11905	MESQUITE	11		
11915	MESQUITE	11		
11916	MESQUITE	17		
11918	MESQUITE		14.5	550
11951	MESQUITE		14	550
11964	MESQUITE	12		
11966	MESQUITE	11		
11971	MESQUITE	12		
13008	HACKBERRY	14		
13009	HACKBERRY	13		
13010	HACKBERRY	10		
13011	HACKBERRY	13		
13014	HACKBERRY	12		
13015	HACKBERRY	12		

13016	ASHE JUNIPER	10		
13017	HACKBERRY	12		
13018	ASHE JUNIPER	13		
13019	ASHE JUNIPER	10		
13022	HACKBERRY	11.5		
13037	HACKBERRY	10		
13039	HACKBERRY		12	875
SUB. TOT. INCHES		1165.00	138.00	
TOTAL INCHES BY CATEGORY			1303.00	
PRESERVATION PERCENTAGE			11%	

MITIGATION REQUIRED (RESIDENTIAL)		318.0	7,900.00
-----------------------------------	--	-------	----------

UNDERSTORY SPECIES (5.0" - 11.5") INVENTORY TABLE				
TAG #	SPECIES	REMOVED	PRESERVED	FINAL CANOPY (SOFT)
11795	PERSIMMON		5	275
11803	PERSIMMON	5		
11807	PERSIMMON		6	275
11809	CONDALIA	5		
11813	CONDALIA	6		
11816	CONDALIA	6		
11820	CONDALIA	6		
11821	CONDALIA	5		
11826	PERSIMMON	5		
11828	PERSIMMON	7		
11829	CONDALIA	6		
11831	CONDALIA	6.5		
11832	PERSIMMON	5		
11833	CONDALIA	5		
11838	CONDALIA	6		
11847	CONDALIA		7	275
11849	PERSIMMON		5	275
11854	CONDALIA	10		
11861	PERSIMMON	5		
11868	CONDALIA	5.5		
11875	PERSIMMON	5.5		
11886	PERSIMMON	7		
11895	CONDALIA	6.5		
11896	CONDALIA	7		
11897	PERSIMMON	5		
11899	CONDALIA	5		
11901	CONDALIA	5		
11906	CONDALIA		5	275
11912	PERSIMMON	6		
11914	CONDALIA	5		
11915	CONDALIA		8.5	275
11955	CONDALIA	7		
11956	CONDALIA	6.5		
11957	CONDALIA		5	275
11963	CONDALIA	5		
11965	CONDALIA	6		
11970	PERSIMMON	5		
11973	CONDALIA	7		
SUB. TOT. INCHES		174.50	44.50	
TOTAL INCHES BY CATEGORY			218.00	
PRESERVATION PERCENTAGE			19%	
MITIGATION REQUIRED (RESIDENTIAL)			34.00	1,925.00

SIGNIFICANT TREE (6" - 23.5") INVENTORY TABLE				
TAG #	SPECIES	REMOVED	PRESERVED	FINAL CANOPY (SOFT)
11636	PECAN	15.5		
11681	MULBERRY	8.5		
11741	RED OAK	17		
11781	GUM BUMELIA	6		
11794	LIVE OAK	9.5		
11862	LIVE OAK	6		
13007	LIVE OAK		11	875
13012	PECAN	22		
13020	PECAN	11		
13034	PECAN	14		
13035	PECAN	16		
SUB. TOT. INCHES		124.50	11.00	
TOTAL INCHES BY CATEGORY			135.50	
PRESERVATION PERCENTAGE			8%	
MITIGATION REQUIRED (RESIDENTIAL)			36.00	875.00

HERITAGE 1:1 INVENTORY TABLE			
TAG #	SPECIES	REMOVED	PRESERVED
11577	HACKBERRY	24	
11665	HACKBERRY	25	
11739	MESQUITE	24	
11762	MESQUITE	26	
11785	MESQUITE	29	
11790	MESQUITE	27	
11791	MESQUITE		24
11792	MESQUITE		24
13038	HACKBERRY	26	
SUB. TOT. INCHES		181.00	48.00
TOTAL INCHES BY CATEGORY			229
HERITAGE PRESERVATION PERCENTAGE			21%
HERITAGE MITIGATION (INCHES)			181.00

HERITAGE 3:1 TREE INVENTORY TABLE			
TAG #	SPECIES	REMOVED	PRESERVED
11937	LIVE OAK	24	
13013	PECAN		25
13023	PECAN		27
13036	PECAN		28
SUB. TOT. INCHES		24.00	78.00
TOTAL INCHES BY CATEGORY			102.00
HERITAGE PRESERVATION PERCENTAGE			52%
HERITAGE MITIGATION (INCHES)			72.00

FLOODPLAIN

FLOODPLAIN (HERITAGE 1:1) TREE INVENTORY TABLE			
TAG #	SPECIES	REMOVED	PRESERVED
13002	MESQUITE		27
SUB. TOT. INCHES		0.00	27.00
TOTAL INCHES BY CATEGORY			27.00
HERITAGE PRESERVATION PERCENTAGE			100%
HERITAGE MITIGATION (INCHES)			0.00

FLOODPLAIN (HERITAGE 3:1) TREE INVENTORY TABLE			
TAG #	SPECIES	REMOVED	PRESERVED
11997	LIVE OAK		24
11999	LIVE OAK		41
SUB. TOT. INCHES		0.00	65.00
TOTAL INCHES BY CATEGORY			65.00
PRESERVATION PERCENTAGE			100%
HERITAGE MITIGATION (INCHES)			0.00

FLOODPLAIN (UNDERSTORY SPECIES (5.0" - 11.5"))			
TAG #	SPECIES	REMOVED	PRESERVED
11977	LIVE OAK		6
12000	CONDALIA		5
13001	PERSIMMON		5
SUB. TOT. INCHES		0.00	16.00
TOTAL INCHES BY CATEGORY			16.00
PRESERVATION PERCENTAGE			100%
MITIGATION (INCHES)			0.00

FLOODPLAIN (SIGNIFICANT TREE (6.0" - 23.5"))			
TAG #	SPECIES	REMOVED	PRESERVED
11943	LIVE OAK		14
11996	LIVE OAK		6
11998	LIVE OAK		14
SUB. TOT. INCHES		0.00	34.00
TOTAL INCHES BY CATEGORY			34.00
PRESERVATION PERCENTAGE			100%
MITIGATION (INCHES)			(7.00)

RIPARIAN BUFFER

30' RIPARIAN BUFFER (UNDERSTORY TREE (5.0" - 11.5"))			
TAG #	SPECIES	REMOVED	PRESERVED
	11944		5
11945	PERSIMMON		6
11967	CONDALIA	5	
11975	CONDALIA		6
11976	PERSIMMON		5
SUB. TOT. INCHES		5.00	22.00
TOTAL INCHES BY CATEGORY			27.00
PRESERVATION PERCENTAGE			81%
MITIGATION (INCHES)			0.00

30' RIPARIAN BUFFER (SIGNIFICANT TREE (10" - 23.5"))				
TAG #	SPECIES	REMOVED	PRESERVED	FINAL CANOPY (SOFT)
11974	MESQUITE		15	550
11995	MESQUITE	17		875
13004	HACKBERRY	15		875
SUB. TOT. INCHES		32.00	15.00	
TOTAL INCHES BY CATEGORY			47.00	
PRESERVATION PERCENTAGE			68%	
MITIGATION (INCHES)			6.00	1975.00

EXEMPT

EXEMPT TREES INVENTORY TABLE		
	TAG #	
3708	MESQUITE	11.5
3713	MESQUITE	11
3714	MESQUITE	16
11502	HACKBERRY	11
11503	MULBERRY	12
11504	HACKBERRY	12
11506	HACKBERRY	12
11507	HACKBERRY	12.5
11508	HACKBERRY	14
11509	HACKBERRY	10
11510	HACKBERRY	14
11511	HACKBERRY	15
11512	HACKBERRY	12
11513	HACKBERRY	10
11515	HACKBERRY	13
11516	HACKBERRY	10
11517	HACKBERRY (Decline)	13
11518	HACKBERRY	15.5
11519	HACKBERRY	10
11530	HACKBERRY	13
11531	HACKBERRY	11
11532	HACKBERRY	16
11533	HACKBERRY	13
11534	HACKBERRY	13.5
11535	HACKBERRY	16
11536	HACKBERRY	12
11537	HACKBERRY	17.5
11538	HACKBERRY	13
11539	HACKBERRY (Decline)	11
11540	HACKBERRY	12.5
11541	HACKBERRY	10
11542	HACKBERRY	10
11543	HACKBERRY	13
11544	HACKBERRY	10
11545	HACKBERRY	12
11546	HACKBERRY	10
11547	HACKBERRY	11.5
11548	HACKBERRY	10
11549	HACKBERRY	13
11550	HACKBERRY	14
11551	HACKBERRY	11.5
11552	HACKBERRY	10.5
11553	HACKBERRY	10.5
11554	HACKBERRY	10.5
11555	HACKBERRY	10
11556	HACKBERRY (Decline)	12
11557	HACKBERRY	11
11558	HACKBERRY	10
11559	HACKBERRY (Decline)	12
11560	HACKBERRY (Decline)	10
11561	HACKBERRY	15
11562	HACKBERRY (Decline)	15
11563	HACKBERRY	15
11564	HACKBERRY	10
11566	HACKBERRY (Decline)	15
11567	MESQUITE (Decline)	12
11568	HACKBERRY (Decline)	14
11569	HACKBERRY (Dead)	11
11570	HACKBERRY (Decline)	11
11575	HACKBERRY (Decline)	16.5
11576	HACKBERRY (Dead)	11
11578	HACKBERRY	15.5
11579	HACKBERRY	14
11580	HACKBERRY (Decline)	12
11581	HACKBERRY	17.5
11582	HACKBERRY	12
11583	HACKBERRY (Decline)	10
11584	HACKBERRY (Dead)	11
11585	HACKBERRY (Dead)	11
11586	HACKBERRY (Decline)	11
11587	HACKBERRY (Decline)	22
11588	HACKBERRY (Decline)	16
11589	HACKBERRY (Decline)	12
11590	MESQUITE (Decline)	16
11591	MESQUITE (Decline)	14
11592	HACKBERRY (Decline)	11
11593	HACKBERRY (Decline)	12.5
11594	HACKBERRY	12.5
11595	MULBERRY	11
11596	HACKBERRY	11
11598	HACKBERRY	12.5
11599	HACKBERRY	11.5
11600	HACKBERRY	10
11601	HACKBERRY	10.5
11602	HACKBERRY	11
11603	HACKBERRY	14
11604	HACKBERRY	11
11605	HACKBERRY	10
11606	HACKBERRY	22
11607	HACKBERRY	15
11608	HACKBERRY	11
11609	HACKBERRY	21
11610	HACKBERRY	14
11611	HACKBERRY	14
11612	HACKBERRY	18
11613	HACKBERRY	16.5
11614	HACKBERRY (Decline)	10
11615	HACKBERRY	10
11619	HACKBERRY	10
11620	HACKBERRY (Decline)	11
11621	HACKBERRY	13
11622	HACKBERRY (Dead)	12
11623	HACKBERRY	10