









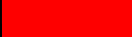



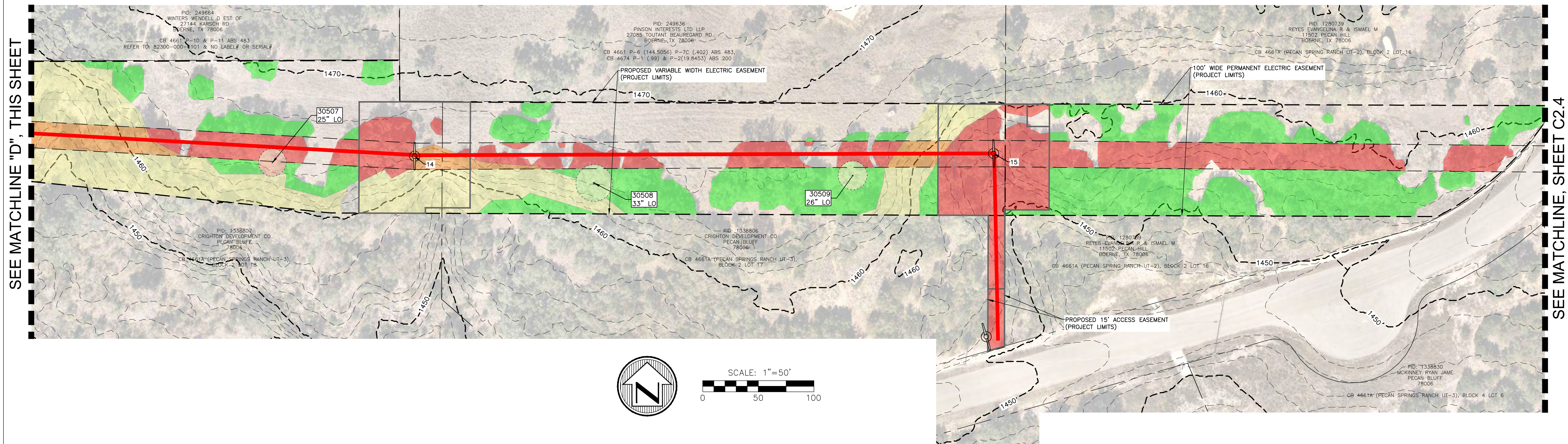


LEGEND:

-
-  PROPOSED LINE OF TRAVEL
 BCAD PARCELS (2024)
 FEMA 1% ANNUAL CHANCE FLOODPLAIN ZONE AE/A (100YR FLOODPLAIN)
 CPS EASEMENT LINE
 CONSTRUCTION STAGING AREA
 60 FT RIPARIAN BUFFER

 PRESERVED CANOPY
 REMOVED CANOPY
 ENVIRONMENTALLY SENSITIVE PRESERVED CANOPY
 ENVIRONMENTALLY SENSITIVE REMOVED CANOPY
 FLOOD PLAIN PRESERVED CANOPY
 FLOOD PLAIN REMOVED CANOPY

 HERITAGE PRESERVED
 HERITAGE REMOVED



SITE DEVELOPMENT BY:

CPS ENERGY
145 NAVARRO ST
SAN ANTONIO, TX 78215

REFERENCE SHEET C2.12 FOR
ADDITIONAL CONSTRUCTION
NOTES AND REQUIREMENTS.



SAN ANTONIO
TEXAS



Moy Tarin Ramirez Engineers, LLC

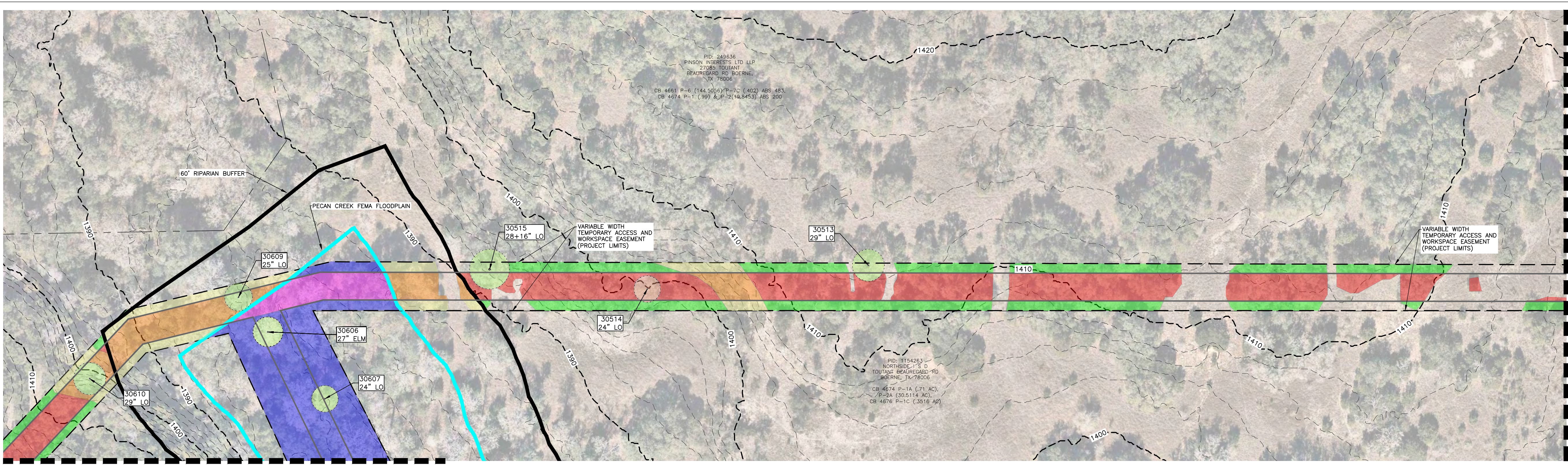
TBP&LS: ENGINEERING F-5297/SURVEYING F-10131500
12770 CIMARRON PATH, SUITE 100 TEL: (210) 698-5051
SAN ANTONIO, TEXAS 78249 FAX: (210) 698-5085

Proprietary

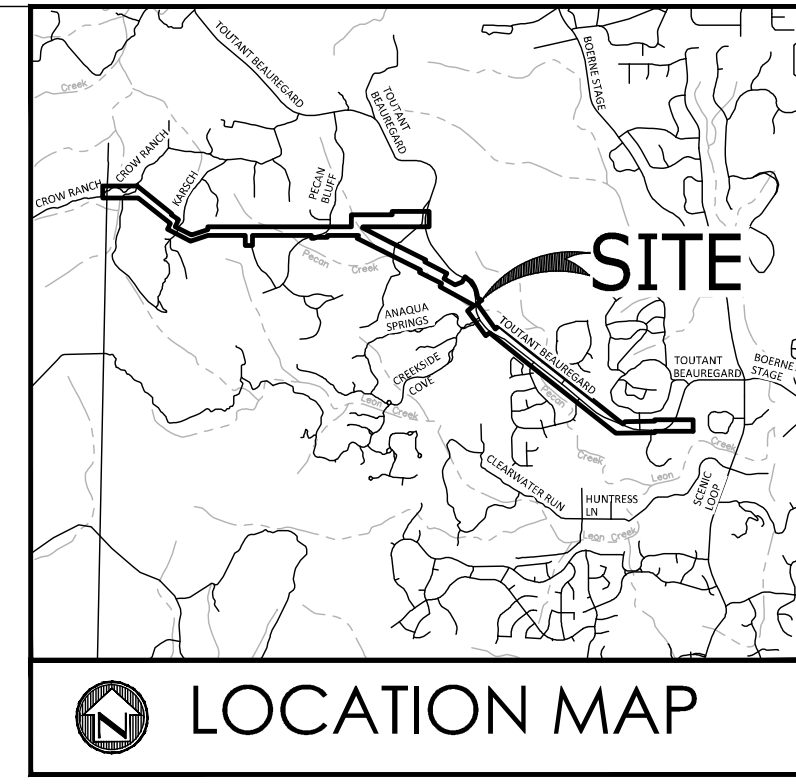
JOB NO. 24235

Confidential - Competitive Matters

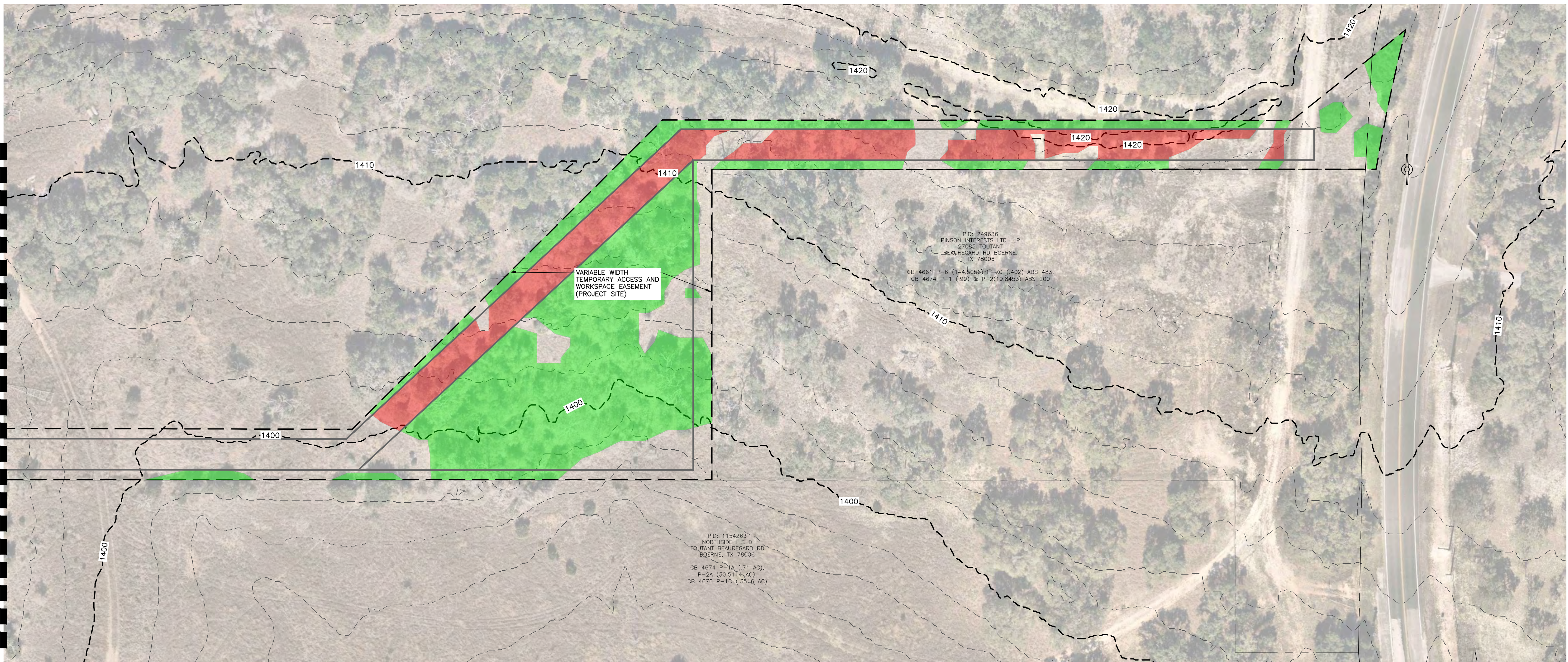
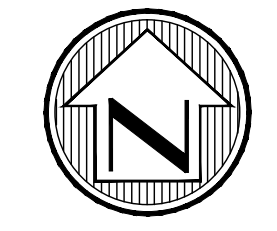
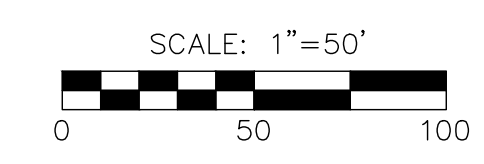
[illegible]



SEE MATCHLINE, SHEET C2.4



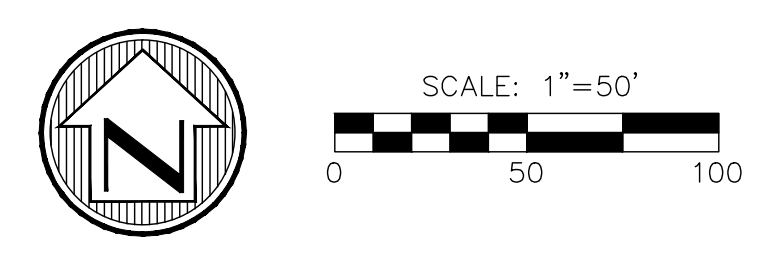
- LEGEND:**
- PROPOSED LINE OF TRAVEL
 - BCAD PARCELS (2024)
 - FEMA 1% ANNUAL CHANCE FLOODPLAIN ZONE AE/A (100YR FLOODPLAIN)
 - CPS EASEMENT LINE
 - CONSTRUCTION STAGING AREA
 - 60 FT RIPARIAN BUFFER
 - PRESERVED CANOPY
 - REMOVED CANOPY
 - ENVIRONMENTALLY SENSITIVE PRESERVED CANOPY
 - ENVIRONMENTALLY SENSITIVE REMOVED CANOPY
 - FLOOD PLAIN PRESERVED CANOPY
 - FLOOD PLAIN REMOVED CANOPY
 - HERITAGE PRESERVED
 - HERITAGE REMOVED



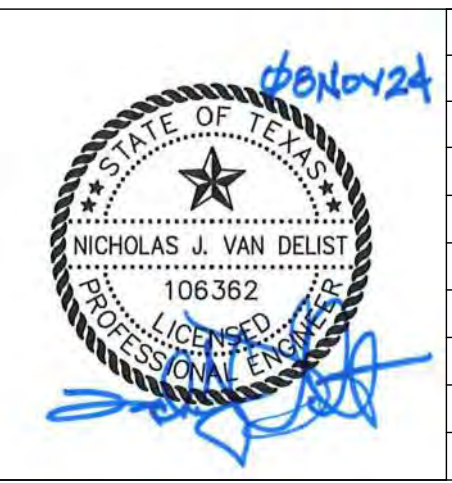
SEE MATCHLINE "F", THIS SHEET

SITE DEVELOPMENT BY:
CPS ENERGY
145 NAVARRO ST
SAN ANTONIO, TX 78215

**REFERENCE SHEET C2.12 FOR
ADDITIONAL CONSTRUCTION
NOTES AND REQUIREMENTS.**

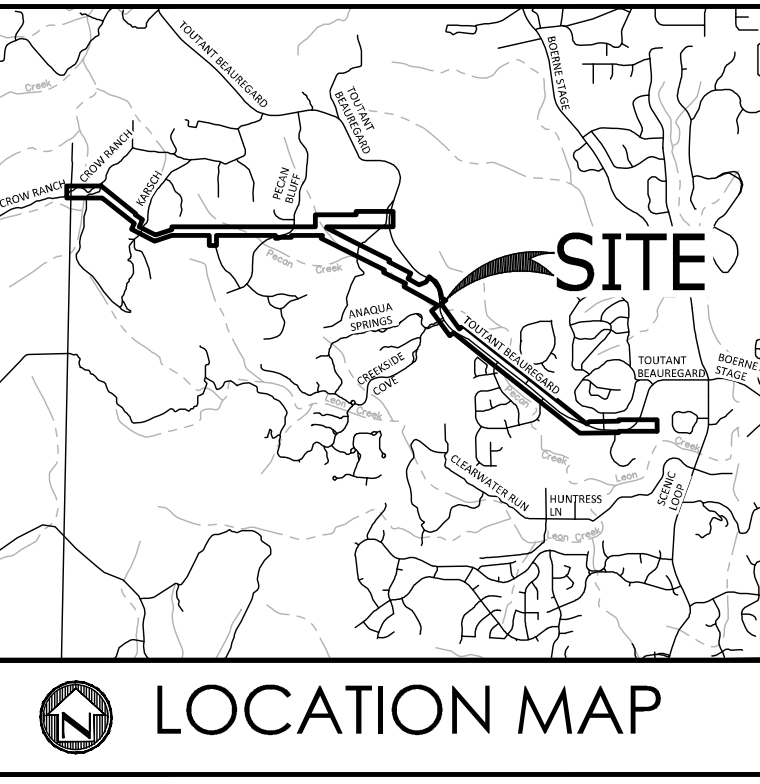


MTR
Moy Tarin Ramirez Engineers, LLC
TBP/ELS: ENGINEERING F-5297/SURVEYING F-10131500
12770 CIMARRON PATH, SUITE 100 TEL: (210) 698-5051
SAN ANTONIO, TEXAS 78249 FAX: (210) 698-5085
JOB NO. 24235



NO	DATE	REVISION	BY	CHK'D	APP	SYSTEM	LD.	DRAWING NUMBER	CODE	SHEET	SCALE
1	06/01/24	1	NJD							C2.5	1" = 20'

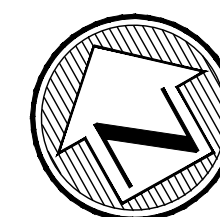
**CPS ENERGY -
SCENIC LOOP
TRANSMISSION LINE
TREE PRESERVATION
PLAN**



CPS ENERGY
145 NAVARRO ST
SAN ANTONIO, TX 78215

SCALE: 1"=50'

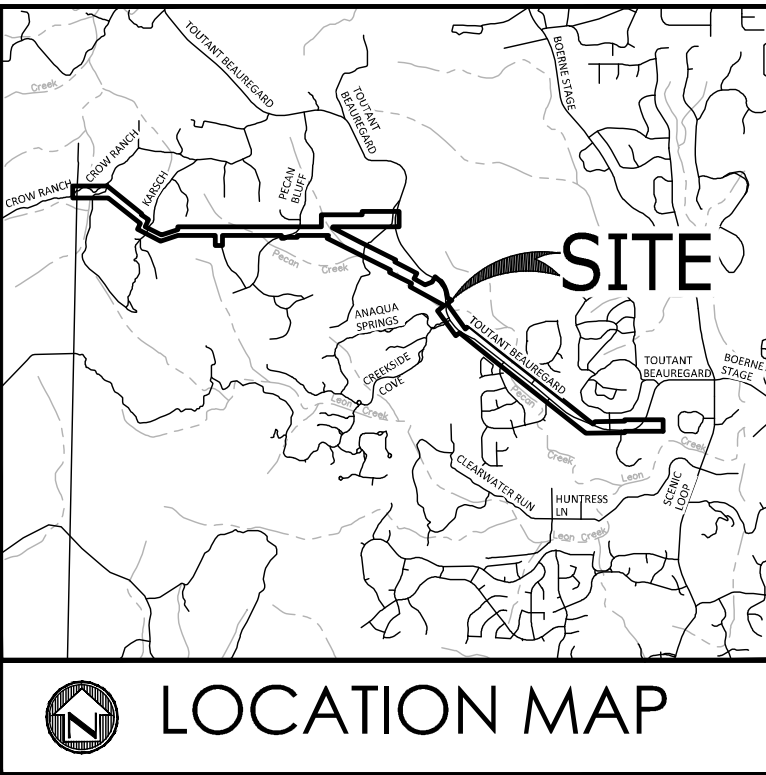
A horizontal scale bar with alternating black and white segments. Below the bar are numerical markers at 0, 50, and 100.

[illegible]

CPS ENERGY -
SCENIC LOOP
TRANSMISSION LINE
TREE PRESERVATION
PLAN

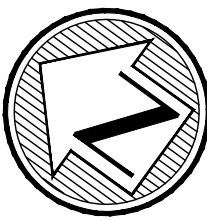
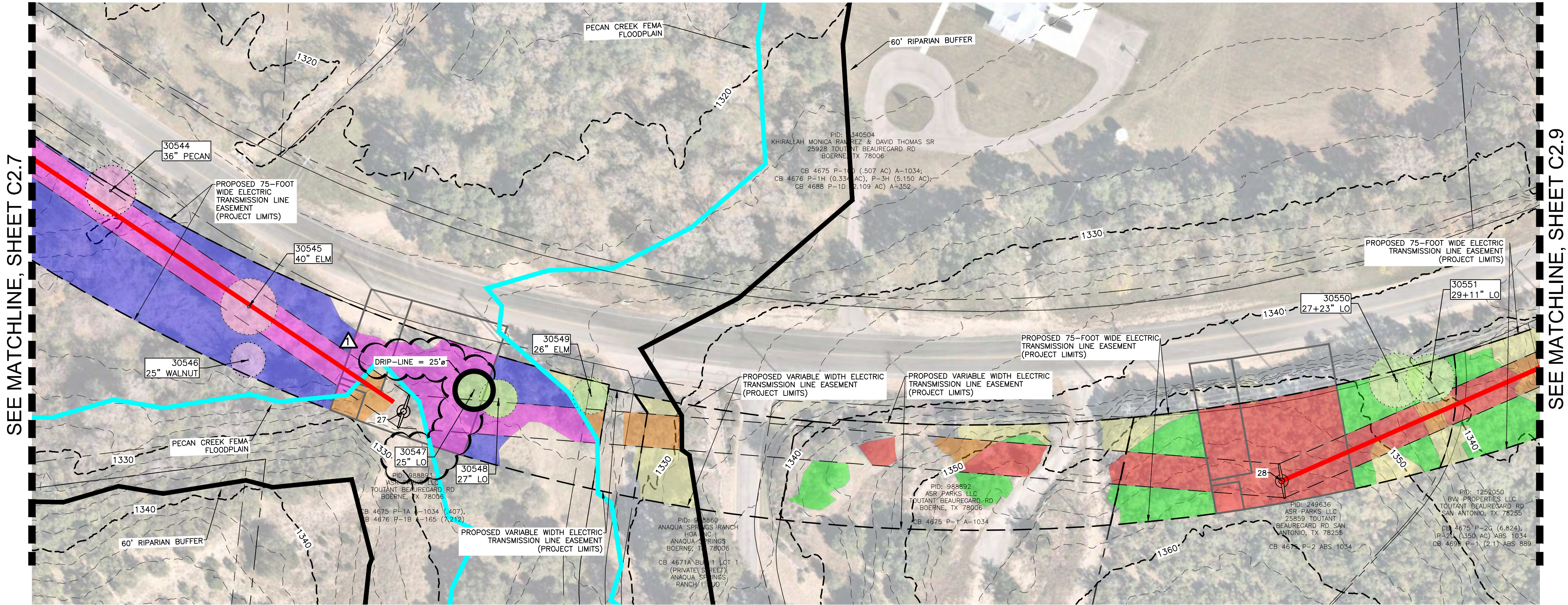


SAN ANTONIO
TEXAS



LEGEND:

- PROPOSED LINE OF TRAVEL
- BCAD PARCELS (2024)
- FEMA 1% ANNUAL CHANCE FLOODPLAIN ZONE AE/A (100YR FLOODPLAIN)
- CPS EASEMENT LINE
- CONSTRUCTION STAGING AREA
- 60 FT RIPARIAN BUFFER
- PRESERVED CANOPY
- REMOVED CANOPY
- ENVIRONMENTALLY SENSITIVE PRESERVED CANOPY
- ENVIRONMENTALLY SENSITIVE REMOVED CANOPY
- FLOOD PLAIN PRESERVED CANOPY
- FLOOD PLAIN REMOVED CANOPY
- HERITAGE PRESERVED
- HERITAGE REMOVED
- TREE & UNDER-STORY WITHIN DRIP-LINE TO BE PRESERVED WITHIN CLEARING AREA



SCALE: 1"=50'

SITE DEVELOPMENT BY:

CPS ENERGY
145 NAVARRO ST
SAN ANTONIO, TX 78215

REFERENCE SHEET C2.12 FOR
ADDITIONAL CONSTRUCTION
NOTES AND REQUIREMENTS.



SAN ANTONIO
TEXAS



Moy Tarin Ramirez Engineers, LLC

TBPELS: ENGINEERING F-5297/SURVEYING F-10131500
12770 CIMARRON PATH, SUITE 100 TEL: (210) 698-5051
SAN ANTONIO, TEXAS 78249 FAX: (210) 698-5085

Engineers
Surveyors
Planners

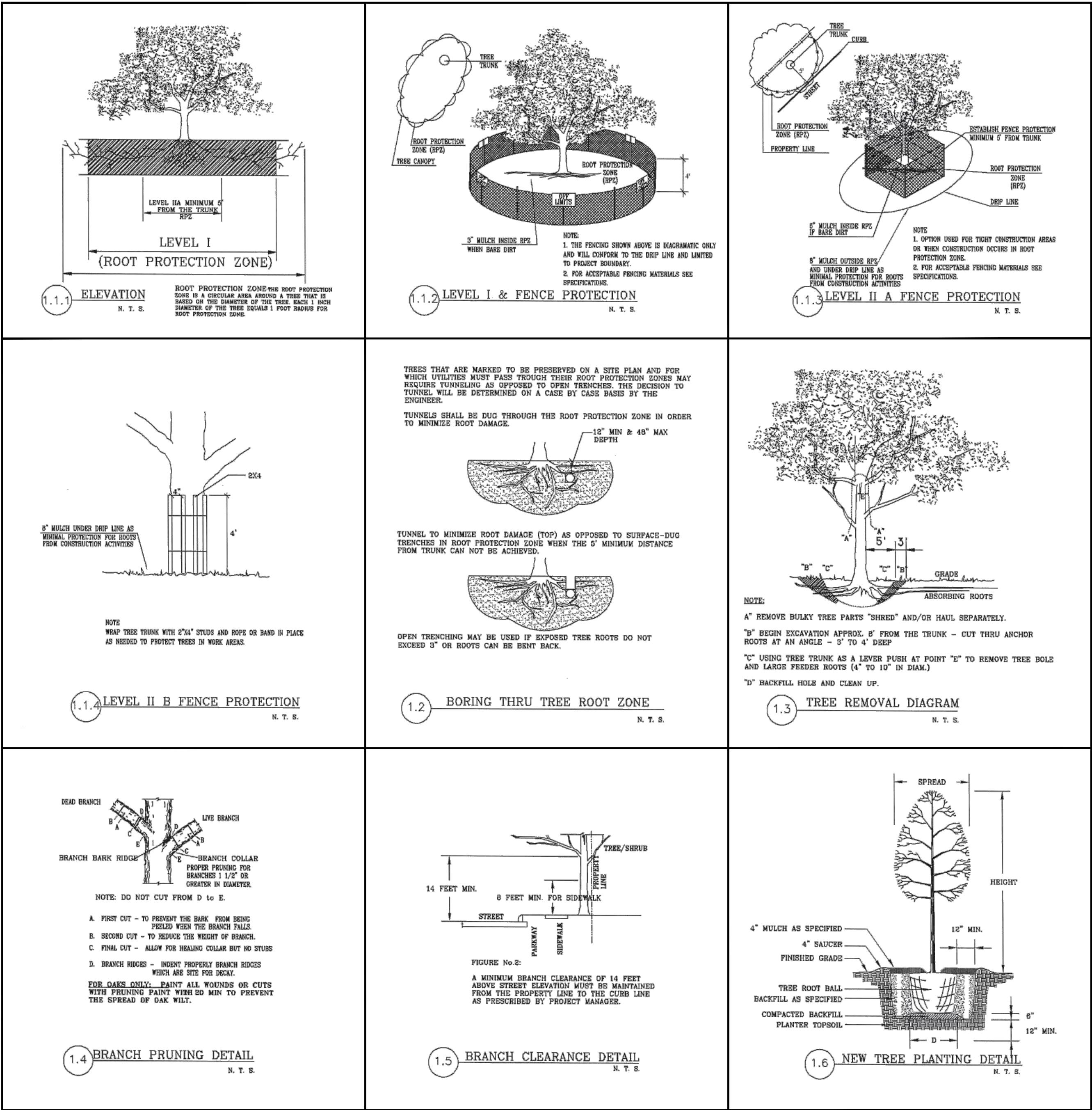


Proprietary
Confidential - Competitive Matters

JOB NO. 24235

NO	DATE	REVISION	BY	CK'D	APP	SYSTEM	I.D.	DRAWING NUMBER	CODE	SHEET	SCALE
1	12/11/2024	COSA COMMENTS - CLEAR AREA TREES								C2.8R1	1" = 50'

CPS ENERGY -
SCENIC LOOP
TRANSMISSION LINE
TREE PRESERVATION
PLAN



TREE REMOVAL NOTES:

- ALL PROTECTED SIZE TREES AFFECTED BY CONSTRUCTION SHALL HAVE THE LIMBS AND ROOTS TRIMMED AND PRUNED ACCORDING TO ITEM No. 802. (TREE PRUNING, SOIL AMENDING AND FERTILIZATION), UNLESS SPECIFIED TREES SHALL RECEIVE LEVEL I PROTECTION AS PER ITEM No. 801. (TREE AND LANDSCAPE PROTECTION) AND AS DETAILED IN 1.1.2.
- ALL TREES SHALL REMAIN UNLESS NOTED ON THE CITY APPROVED PLANS.
- NO SITE PREPARATION WORK SHALL BEGIN IN AREAS WHERE TREE PRESERVATION AND PROTECTION MEASURES HAVE NOT BEEN COMPLETED AND APPROVED BY THE CITY ARBORIST OFFICE.
- TREE PROTECTION FENCING SHALL BE MAINTAINED AND REPAIRED BY THE CONTRACTOR DURING SITE CONSTRUCTION.
- THE CONTRACTOR SHALL AVOID CUTTING ROOTS LARGER THAN THREE INCHES (3") IN DIAMETER WHEN EXCAVATING NEAR EXISTING TREES. EXCAVATION IN THE VICINITY OF TREES SHALL PROCEED WITH CAUTION. THE CONTRACTOR SHALL CONTACT THE CITY INSPECTOR IF ROOTS LARGER THAN THREE INCHES (3") WITHIN THE FIVE FOOT (5') ROOT PROTECTION ZONE NEED TO BE PRUNED.
- THE ROOT PROTECTION ZONE IS THAT AREA SURROUNDING A TREE, AS MEASURED BY A RADIUS FROM THE TREE TRUNK, IN WHICH NO EQUIPMENT, VEHICLES OR MATERIALS MAY OPERATE OR BE STORED. THE REQUIRED RADIUS LENGTH IS ONE FOOT (1') PER DIAMETER INCH OF THE TREE. FOR EXAMPLE, A TEN INCH (10") DIAMETER TREE WOULD HAVE A TEN FOOT (10') RADIUS ROOT PROTECTION ZONE AROUND THE TREE. ROOTS OR BRANCHES THAT ARE IN CONFLICT WITH THE CONSTRUCTION SHALL BE CUT CLEANLY ACCORDING TO PROPER PRUNING METHODS. ALL OAK WOUNDS SHALL BE PAINTED OVER, WITHIN TWENTY (20) MINUTES TO PREVENT OAK WILT.
- NO DISTURBANCE SHALL OCCUR CLOSER TO THE TRUNK THAN HALF THE ROOT PROTECTION ZONE AREA.
- TREES, SHRUBS OR BUSHES TO BE CLEARED FROM PROTECTED ROOT ZONE AREAS SHALL BE REMOVED BY HAND.
- TREES DAMAGED OR LOST DUE TO CONTRACTOR'S NEGLIGENCE DURING CONSTRUCTION SHALL BE MITIGATED.
- EXPOSED ROOTS SHALL BE COVERED AT THE END OF EACH DAY USING TECHNIQUES SUCH AS COVERING WITH SOIL, MULCH OR WET BURLAP.
- ANY TREE REMOVAL SHALL BE APPROVED BY THE CITY ARBORIST OFFICE PRIOR TO ITS REMOVAL.
- CONTRACTOR SHALL DRILL SEED ALL AREAS DISTURBED BY CONSTRUCTION ACTIVITIES OR TREE REMOVAL. IF DRILL SEEDING IS NOT POSSIBLE, CONTRACTOR SHALL PROVIDE HYDROMULCH. ALL SEEDING SHALL CONTAIN AN APPROVED NATIVE SEED MIX. CONTRACTOR SHALL ENSURE 85% ESTABLISHMENT OF VEGETATION IN DISTURBED AREAS.

TREE STAND DELINEATION CANOPY

CATEGORY	SF	ACRES	SF/ACRE
CANOPY PRESERVED	429571.18	9.86	43560
CANOPY REMOVED	349426.54	8.02	43560
REGULATORY FLOODPLAIN PRESERVED	223246.09	5.13	43560
REGULATORY FLOODPLAIN REMOVED	104322.98	2.39	43560
ENVIRONMENTALLY SENSITIVE CANOPY PRESERVED	203532.44	4.67	43560
ENVIRONMENTALLY SENSITIVE CANOPY REMOVED	82073.00	1.88	43560
TOTAL	1392172.22	31.96	43560

UPLAND HERITAGE TREES

Heritage Preserved		
Point Number	Size	Species
30508	33	LO
30509	26	LO
30513	29	LO
30515	36	LO
30516	29	LO
30517	28	LO
30519	33	LO
30520	34	LO
30521	33	LO
30542	33.5	LO
30558	43	LO
30560	24	LO
30562	33	CDR
30563	48	LO
30564	44	LO
30571	26	LO
30572	32.5	LO
30618	26	LO
30619	32	LO
Total:	625	inches

Heritage Removed		
Point Number	Size	Species
30507	25	LO
30514	24	LO
30518	26	SO
30522	48	LO
30557	25	LO
30559	25	LO
Total:	173	inches

ENVIRONMENTALLY SENSITIVE HERITAGE TREES

Heritage Preserved (Environmentally Sensitive)		
Point Number	Size	Species
30485	25	LO
30487	24	LO
30488	24	LO
30505	25	LO
30549	26	ELM
30550	38.5	LO
30551	34.5	LO
30567	28	LO
30568	29	LO
30597	30	LO
30599	27	LO
30609	25	LO
30610	29	LO
30611	24	LO
30612	25	LO
30613	29	ELM
Total:	443	inches

Heritage Removed (Environmentally Sensitive)		
Point Number	Size	Species
Total:	0	inches

FLOODPLAIN HERITAGE TREES

Heritage Preserved (Floodplain)		
Point Number	Size	Species
30486	25	LO
30489	25	ELM
30491	25	PECAN
30492	25	PECAN
30493	33	PECAN
30494	24	PECAN
30495	38.5	PECAN
30497	31	PECAN
30498	24	ELM
30500	26	ELM
30502	28	ELM
30523	27	PECAN
30524	26	PECAN
30525	26	PECAN
30526	28	PECAN
30527	24	PECAN
30528	26	PECAN
30529	29	PECAN
30530	25	PECAN
30531	32	PECAN
30532	25	PECAN
30533	27	PECAN
30534	27	PECAN
30535	31	PECAN
30536	24	PECAN
30539	29	PECAN
30540	24	PECAN
30541	28	PECAN
30546	25	WALNUT
30553	25	ELM
30555	31	PECAN
30575	26	LO
30579	30	LO
30580	33	LO
30581	26	LO
30582	27	LO
30583	30	LO
30584	30	LO
30588	33	LO
30586	32	LO
30587	29	LO
30590	24	ELM
30591	26	LO
30593	25	ELM
30602	27	ELM
30603	24	ELM
30604	24	ELM
30606	27	ELM
30607	24	LO
30614	29	LO
30615	45.5	LO
30616	38.5	LO
Total:	1453.5	inches

Heritage Removed (Floodplain)		
Point Number	Size	Species
30496	24	PECAN
30499	25	ELM
30503	28	ELM
30543	25	ELM
30544	36	PECAN
30545	40	ELM
30547	25	LO
30548	27	LO
30552	26	PECAN
30554	32	PECAN
Total:	288	inches

PRESERVATION CALCULATIONS FOR UPLAND CANOPY

TREE STAND DELINEATION CALCULATIONS (PRESERVATION)(UPLAND TREES, EXCLUDING HERITAGE)				
TOTAL CANOPY (ACRES)	25% REQUIRED FINAL TREE CANOPY (ACRES)	TOTAL PRESERVED CANOPY (EXCLUDING HERITAGE TREES) (ACRES)	SURPLUS PRESERVED CANOPY (ACRES)	TOTAL CANOPY PRESERVED (%)
17.88	4.47	9.86	5.39	55.14%

HERITAGE TREES (UPLAND ONLY)				
TOTAL HERITAGE TREE INCHES	TOTAL PRESERVED HERITAGE INCHES	TOTAL REMOVED HERITAGE INCHES	TOTAL INCHES TO BE MITIGATED (3:1)	TOTAL HERITAGE TREE PRESERVATION (%)
798	625	173	519	78.32%

PRESERVED HERITAGE CANOPY SUMMARY (UPLAND ONLY)				
TOTAL HERITAGE INCHES PRESERVED	NUMBER OF TREES AT A DIAMETER OF 16.7"	DOMINANT SPECIES SHADE VALUE (S.F.) @ 16.7" DIAMETER	TOTAL CANOPY (S.F.)	TOTAL CANOPY (ACRES)
625	37	875	32747	0.75

PRESERVATION CALCULATIONS FOR ENVIRONMENTALLY SENSITIVE CANOPY

ENVIRONMENTALLY SENSITIVE CANOPY (SLOPES > 20% & RIPARIAN BUFFER)				
TOTAL ENVIRONMENTALLY SENSITIVE CANOPY (ACRES)	80% REQUIRED PRESERVATION OF ENVIRONMENTALLY SENSITIVE CANOPY (ACRES)	TOTAL PRESERVED ENVIRONMENTALLY SENSITIVE CANOPY (ACRES)	TOTAL CANOPY DEFICIT (ACRES)	TOTAL ENVIRONMENTALLY SENSITIVE CANOPY PRESERVED (%)
6.56	5.25	4.67	0.57	71.26%

ENVIRONMENTALLY SENSITIVE HERITAGE TREES (SLOPES > 20% & RIPARIAN BUFFER)				
TOTAL HERITAGE TREE INCHES	TOTAL PRESERVED HERITAGE INCHES	TOTAL REMOVED HERITAGE INCHES	TOTAL INCHES TO BE MITIGATED (3:1)	TOTAL HERITAGE TREE PRESERVATION (%)
443	443	0	0	100.00%

PRESERVED HERITAGE CANOPY SUMMARY (ENVIROMENTALLY SENSITIVE AREAS)				
TOTAL HERITAGE INCHES PRESERVED	NUMBER OF TREES AT A DIAMETER OF 16.7"	DOMINANT SPECIES SHADE VALUE (S.F.) @ 16.7" DIAMETER	TOTAL CANOPY (S.F.)	TOTAL CANOPY (ACRES)
443	27	875	23211	0.53

CANOPY AND HERITAGE MITIGATION (ENVIRONMENTALLY SENSITIVE AREAS)			
TOTAL CANOPY MITIGATION INCHES REQUIRED (INCHES)	TOTAL HERITAGE MITIGATION INCHES REQUIRED (INCHES)	TOTAL MITIGATION INCHES REQUIRED	FILO PAYMENT TO TREE MITIGATION FUND (\$200.00 PER INCH)
476	0	476	\$ 95,245.02

PRESERVATION CALCULATIONS FOR CANOPY LOCATED WITHIN FLOODPLAINS

TREE STAND DELINEATION CALCULATIONS (PRESERVATION) (EXCLUDING HERITAGE CANOPY)(FLOODPLAIN ONLY)				
TOTAL CANOPY (ACRES)	80% REQUIRED FINAL TREE CANOPY (ACRES)	TOTAL PRESERVED CANOPY (ACRES)	TOTAL CANOPY DEFICIT (ACRES)	TOTAL CANOPY PRESERVATION (%)
7.52	6.02	5.13	0.89	68.15%

HERITAGE TREES (FLOODPLAIN ONLY)				
TOTAL HERITAGE TREE INCHES	TOTAL PRESERVED HERITAGE INCHES	TOTAL REMOVED HERITAGE INCHES	TOTAL INCHES TO BE MITIGATED (3:1)	TOTAL HERITAGE TREE PRESERVATION (%)
1742	1454	288	864	83.46%

CANOPY AND HERITAGE MITIGATION (REGULATORY FLOODPLAIN)			
TOTAL CANOPY MITIGATION INCHES REQUIRED (INCHES)	TOTAL HERITAGE MITIGATION INCHES REQUIRED (INCHES)	TOTAL MITIGATION INCHES REQUIRED	FILO PAYMENT TO TREE MITIGATION FUND (\$200.00 PER INCH)
741	864	1605	\$ 320,940.13



- CONTRACTOR SHALL DRILL SEED ALL AREAS DISTURBED BY CONSTRUCTION ACTIVITIES OR TREE REMOVAL. IF DRILL SEEDING IS NOT POSSIBLE, CONTRACTOR SHALL PROVIDE HYDROMULCH. ALL SEEDING SHALL CONTAIN AN APPROVED NATIVE SEED MIX. CONTRACTOR SHALL ENSURE 85% ESTABLISHMENT OF VEGETATION IN DISTURBED AREAS.



SAN ANTONIO
TEXAS




Moy Tarin Ramirez Engineers, LLC

TBPELS: ENGINEERING F-5297/SURVEYING F-10131500
12770 CIMARRON PATH, SUITE 100 TEL: (210) 698-5051
SAN ANTONIO, TEXAS 78249 FAX: (210) 698-5085

JOB NO. 24235

Proprietary
Confidential - Competitive Matters



	12/18/2024	ADDED GRASS RE-ESTABLISHMENT				CPS ENERGY - SCENIC LOOP TRANSMISSION LINE TREE PRESERVATION PLAN - DETAILS					
NO	DATE	REVISION	BY	CK'D	APP	SYSTEM	LD	DRAWING NUMBER	CODE	SHEET	SCALE
Plot Date/Time: R:\CPS\Scenic Loop Transmission Line\Drawings\232226_01_C2.12_TP DETAILS.dwg 2024/12/18 11:36am nrbalcarb											
										C2.12	N.T.S.

CPS ENERGY -
SCENIC LOOP
TRANSMISSION LINE

TREE PRESERVATION PLAN -
DETAILS