



Edwards Aquifer Protection Program Fee Simple Acquisition

City Council

October 31, 2024

Parks and Recreation Department

Fee Simple Acquisition

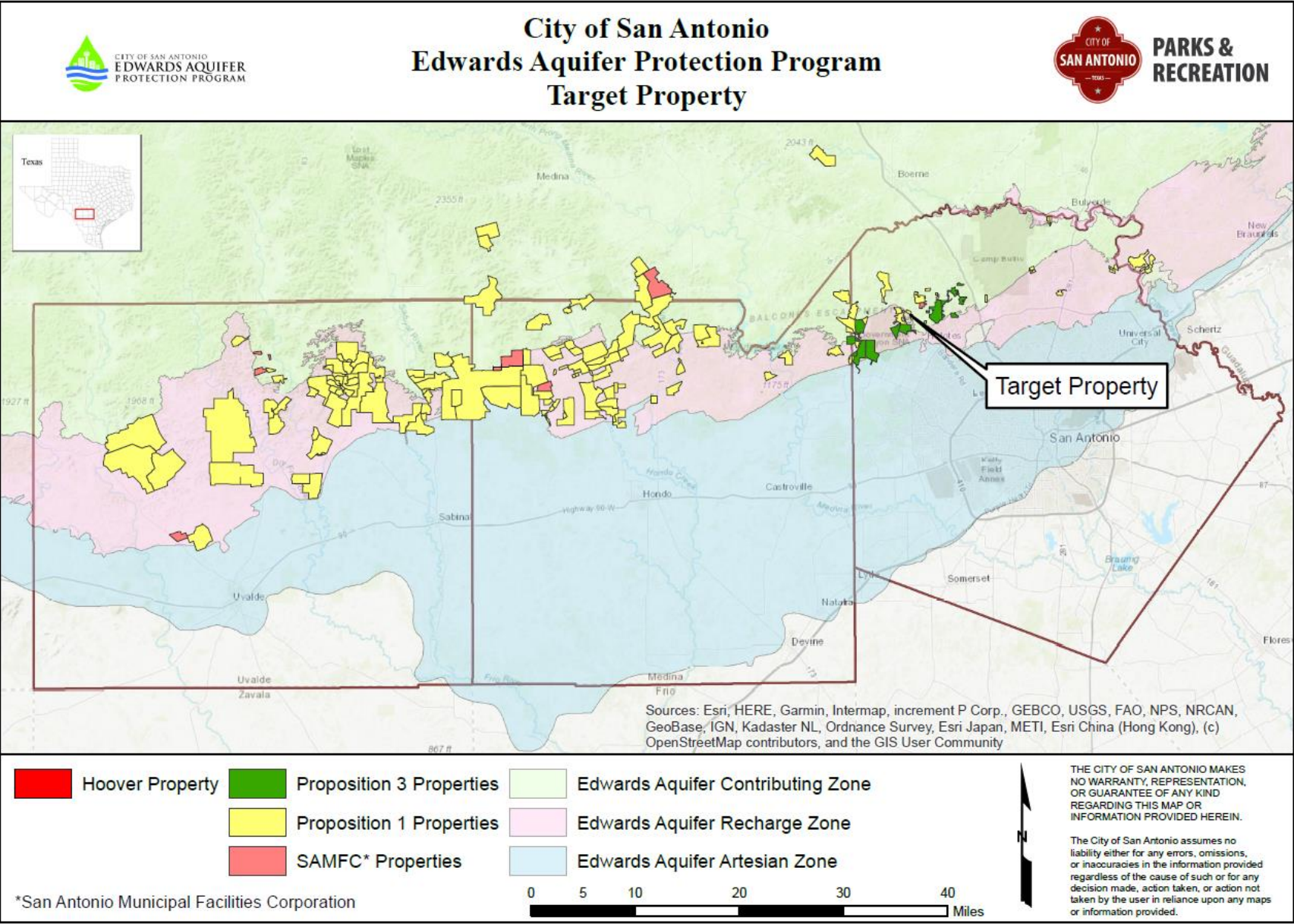
Property	County	Acres	Cost
Hoover Property	Bexar	20.03	\$608,007.74

Acquisition Benefits

- Property located over the Edwards Aquifer Contributing Zone in Bexar County
- Important recharge features on property
- Moderate water quantity and high water quality benefits
- Results in increase of 20.03 acres
- Adjacent to 453-acre Scenic Canyon Natural Area



Total Land Protected = 184,611 acres



Program Status

- 185,193 acres protected with approval of today's proposed acquisitions
- To date, City Council has approved the acquisition of 132 conservation easements and 24 fee simple purchases
- Propositions 1 and 3 sales tax fully expended
- 10-year, \$100M acquisition program approved in 2020 under SAMFC
 - \$30M in debt issued in August 2023 for FY 2023 – 2025 acquisitions
 - \$14.1M expended to date to protect 6,360 acres

Recommendation

- Staff recommends approval