



## **A RESOLUTION**

APPROVING AND AUTHORIZING THE CONSTRUCTION OF THE HOWARD ROAD TO LEON CREEK PHASE II TRANSMISSION LINE PROJECT AND THE ACQUISITION OF EASEMENT RIGHTS, FEE SIMPLE TITLE AND PROPERTY EXCHANGES WITH OUTSIDE ENTITIES OVER AND ACROSS CERTAIN PROPERTIES LOCATED IN SOUTHERN SAN ANTONIO, BEXAR COUNTY, TEXAS, EITHER BY PURCHASE THROUGH NEGOTIATIONS OR BY THE PROCESS OF EMINENT DOMAIN, FOR EXPANSION AND OPERATION OF THE CITY OF SAN ANTONIO ELECTRIC SYSTEM, INCLUDING THE CONSTRUCTION, OPERATION AND MAINTENANCE OF ELECTRIC TRANSMISSION LINES, COMMUNICATION SYSTEMS, AND RELATED APPURTENANCES.

WHEREAS, CPS Energy staff identified the need to rebuild the existing Howard Road to Leon Creek transmission line to satisfy the power needs and to enhance reliability of the CPS Energy electric system within Bexar County, Texas (the "Howard Road to Leon Creek Phase II Transmission Line Project");

WHEREAS, the Howard Road to Leon Creek Phase II Transmission Line Project has a recommended in-service date by May 2026;

WHEREAS, the process used by CPS Energy included notification of land owners adjacent to the proposed route and area public officials, maintenance of internet-based information, and the receipt of public comments regarding the proposed electric transmission line route through an open house meeting, correspondence, phone calls and other meetings;

WHEREAS, at the close of process, CPS Energy staff recommended to the CPS Energy Board of Trustees ("Board") an expansion of the existing right of way that is located on the east side of, and abutting the existing CPS Energy transmission line, as shown on the Project Site Map attached as Exhibit "A" to this Resolution (the "Project Site Map");

WHEREAS, the Board agrees with the Project Team's determination that the CPS Energy recommended route for the Howard Road to Leon Creek electric transmission line rebuild has a low impact on both the human and natural environments because such route will, to the greatest extent practicable:



- Maximize use of existing rights-of-way,
- Minimize impacts to natural resources,
- Minimize the impacts to residential developments and habitable structures, and
- Minimize the overall impact of additional CPS Energy facilities in future years;

WHEREAS, the Board finds necessary and desirable the rebuild of the Howard Road to Leon Creek electric transmission line, and associated communication systems and related appurtenances and the acquisition of easement rights, fee simple title over and across properties in southwest San Antonio, Bexar County, Texas along the recommended route of the electric transmission line, for the construction, operation and maintenance of the City of San Antonio's Electric System, including the construction, operation and maintenance of the Howard Road to Leon Creek Phase II Transmission Line Project, either by purchase through negotiations, or by the process of eminent domain approved by the San Antonio City Council.

NOW, THEREFORE, BE IT RESOLVED BY THE CITY PUBLIC SERVICE BOARD OF TRUSTEES that:


1. The recitals to this Resolution are hereby incorporated for all purposes.
2. The Board finds that the Howard Road to Leon Creek Phase II Transmission Line Project is of great importance to the public, and that CPS Energy has taken into account appropriate environmental, health and safety concerns in designating the project route.
3. The Board hereby approves the CPS Energy Howard Road to Leon Creek Phase II Transmission Line Project to be constructed along the recommended route, as generally depicted on the Project Site Map attached to this Resolution as Exhibit "A" and hereby incorporated for all purposes, and directs CPS Energy staff and attorneys to proceed with the necessary steps to undertake and complete the Howard Road to Leon Creek Phase II Transmission Line Project.
4. The Board reaffirms the CPS Energy practice of taking all necessary and reasonable steps to minimize disturbance on affected properties.
5. The Board authorizes the President and CEO of CPS Energy and/or her designee to determine the exact location for CPS Energy's electric transmission line along the recommended route as depicted generally on the Project Site Map.
6. The Board finds that the acquisition of easement rights, fee simple title to properties along the recommended electric transmission line route is necessary and desirable for the important public purpose of the construction, operation and maintenance of the City of San Antonio's Electric System, including the CPS Energy Howard Road to Leon Creek Phase II Transmission Line Project. The Board hereby authorizes acquisition of easement rights, fee simple title necessary for CPS Energy's Howard Road to Leon Creek Phase II Transmission Line Project, either by purchase through negotiations or by the process of eminent domain, as well as all other lawful action necessary and incidental to such acquisitions or eminent domain proceedings to survey, specify, define, and secure the necessary title and rights.



7. The Board directs CPS Energy staff to ensure that members of the public may obtain the current Project Site Map at [www.cpsenergy.com](http://www.cpsenergy.com) (search word "Howard Road to Leon Creek").

I, Shanna M. Ramirez, Secretary of the Board of Trustees of CPS Energy, do hereby certify that the foregoing is a true and exact copy of a resolution which was unanimously passed and approved at the meeting of the Board of Trustees of CPS Energy, held on November 18, 2024, at which a quorum was present.

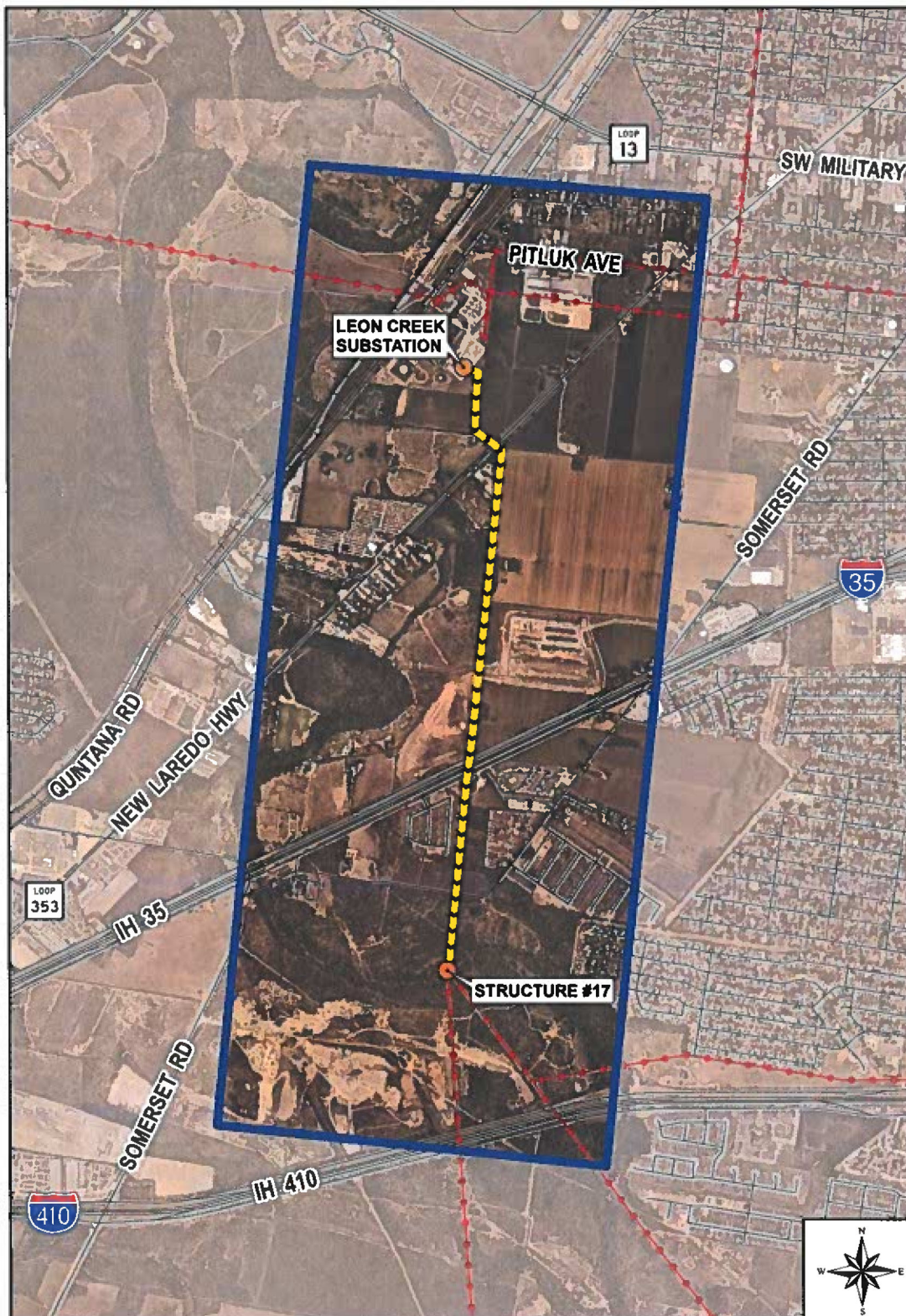
**WITNESS MY HAND AND SEAL OF THE CPS ENERGY BOARD OF TRUSTEES  
on the 18<sup>th</sup> day of November 2024.**



---

Shanna M. Ramirez  
Secretary of the Board





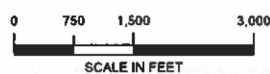
PROPOSED REBUILD ROUTE  
 HOWARD ROAD — LEON CREEK 138 kV PHASE 2 TRANSMISSION LINE PROJECT  
 CPS ENERGY  
 BEXAR COUNTY, TEXAS

 STUDY AREA

 ENDPOINT

 PROPOSED REBUILD ROUTE

 EXISTING TRANSMISSION LINE  
 (NOT PART OF PROJECT)



 halff

NEARMAP AERIAL IMAGERY FLOWN: 5/27/2024

 CPS ENERGY

DATE CREATED: 11/1/2024