

F

D

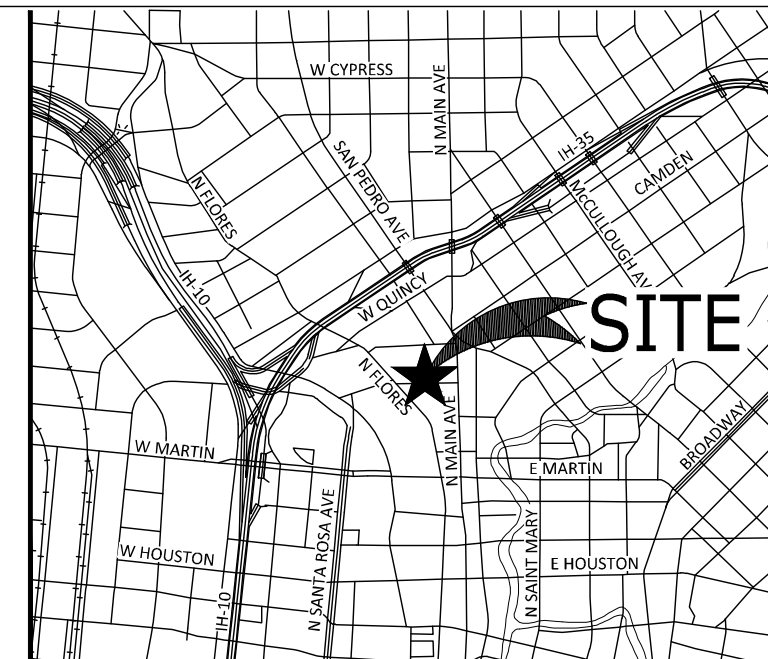
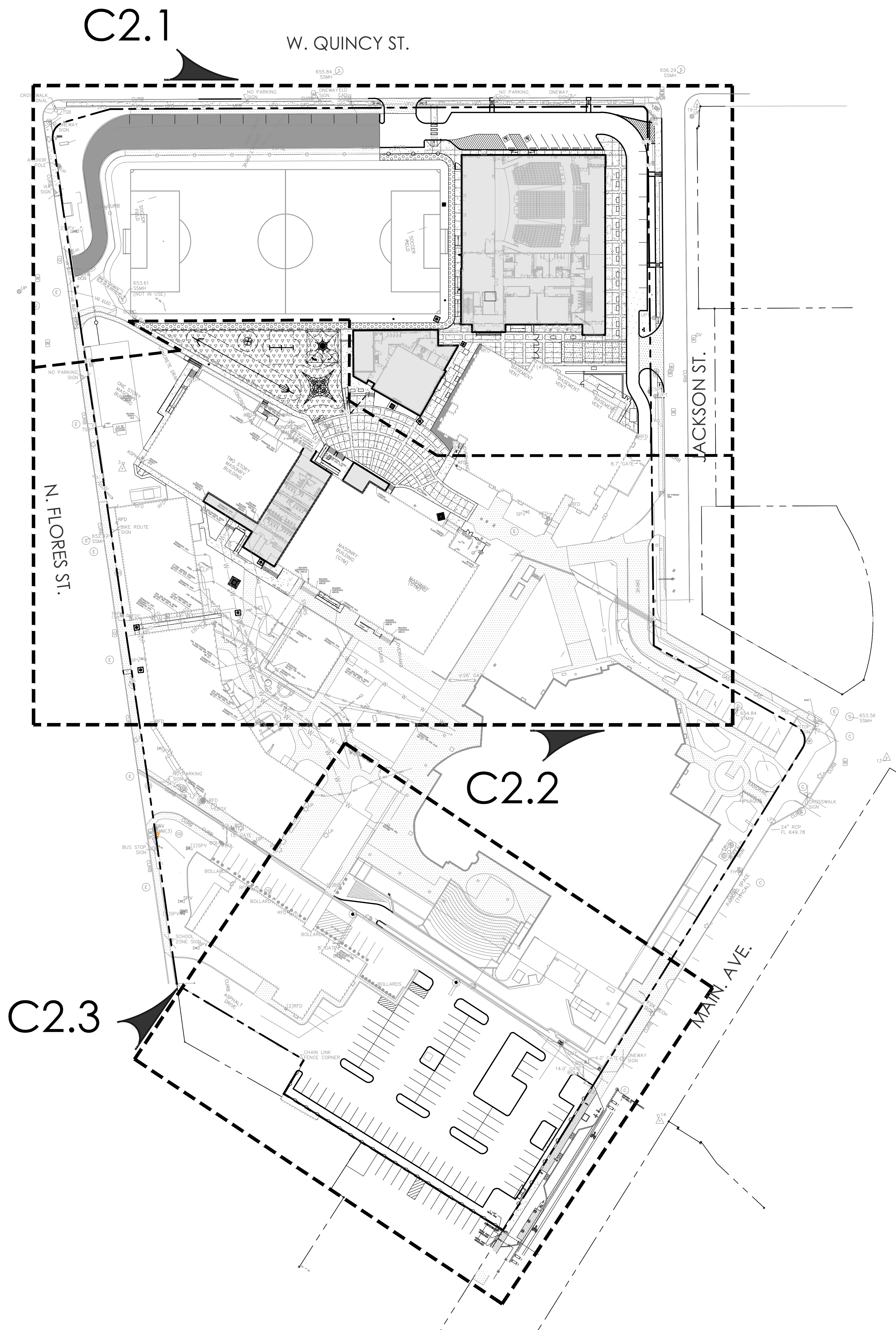
C

B

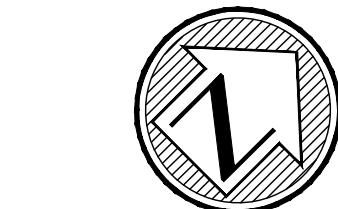
A

4/17/2024 4:55:05 PM

ORIGINAL SHEET - ARCHIT



LOCATION MAP
NOT TO SCALE



SCALE: 1"=50'
50 25 0 50

DIMENSIONAL CONTROL NOTES:

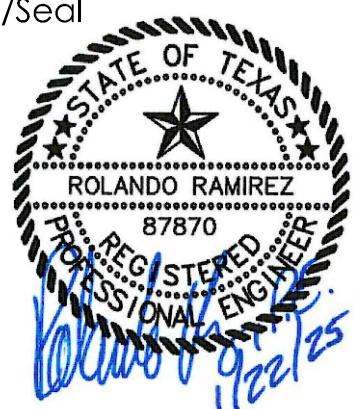
1. ALL DIMENSIONS ARE TO FACE OF CURB UNLESS OTHERWISE NOTED ON PLAN.
2. ALL RADII SHALL BE 5.00' UNLESS NOTED OTHERWISE NOTED ON PLAN.
3. MOY TARIN RAMIREZ ENGINEERS, LLC. WILL BE RESPONSIBLE FOR FIELD STAKING (ONE TIME ONLY) THREE CONTROL POINTS, OF CONTRACTOR'S CHOICE. RESTAKING WILL BE AT THE CONTRACTOR'S EXPENSE.
4. MOY TARIN RAMIREZ ENGINEERS, LLC. CAN PERFORM FIELD STAKING SERVICES FOR ANY IMPROVEMENTS AS SHOWN ON THE CONSTRUCTION PLANS. ANY STAKING REQUESTED, BEYOND THE THREE LISTED ABOVE, WILL BE AT THE CONTRACTOR'S EXPENSE.
5. CONTRACTOR IS RESPONSIBLE FOR COORDINATING ALL LOCATIONS SHOWN WITH SIGNED AND SEALED CONSTRUCTION DOCUMENTS PRIOR TO CONSTRUCTION. ANY DISCREPANCIES SHALL BE REPORTED BEFORE PROCEEDING WITH CONSTRUCTION.
6. ALL BUILDING CORNER POINTS ARE FOR ALIGNMENT PURPOSES ONLY. COORDINATE WITH ARCHITECTURAL AND STRUCTURAL PLANS FOR BUILDING LAYOUT AND DIMENSIONS.
7. REFERENCE SHEET C5.0, FIRE PROTECTION SITE PLAN, FOR ADDITIONAL SIGNAGE AND STRIPING REQUIREMENTS.

ALL REMAINING SIDEWALKS, RAMPS, CURBS & APPROACHES IN THE RIGHT-OF-WAY ARE IN COMPLIANCE WITH CURRENT TEXAS ACCESSIBILITY STANDARDS & CITY OF SAN ANTONIO DESIGN STANDARDS PRIOR TO FINAL INSPECTION APPROVAL.

NO BUILDINGS WITH PERMANENT FOUNDATIONS OR COVERED AREAS, I.E., CANOPIES, COVERED WALKWAYS etc. WILL BE CONSTRUCTED WITHIN EASEMENT AREAS SHOWN ON THIS PLAN.



Permit/Seal



Consultant



Moy Tarin Ramirez Engineers, LLC
FIRM TBPE NO. F-5297 & TBPLS NO. 10131500
12705 CAMDEN PARK, SUITE 102 TEL: (210) 698-5081
SAN ANTONIO, TEXAS 78249 FAX: (210) 698-5085



Client/Project
SAN ANTONIO INDEPENDENT SCHOOL DISTRICT

**BOND 2020 FOX TECH CAMPUS
ADDITIONS & RENOVATIONS**

637 N. MAIN AVE.
SAN ANTONIO, TEXAS 78205

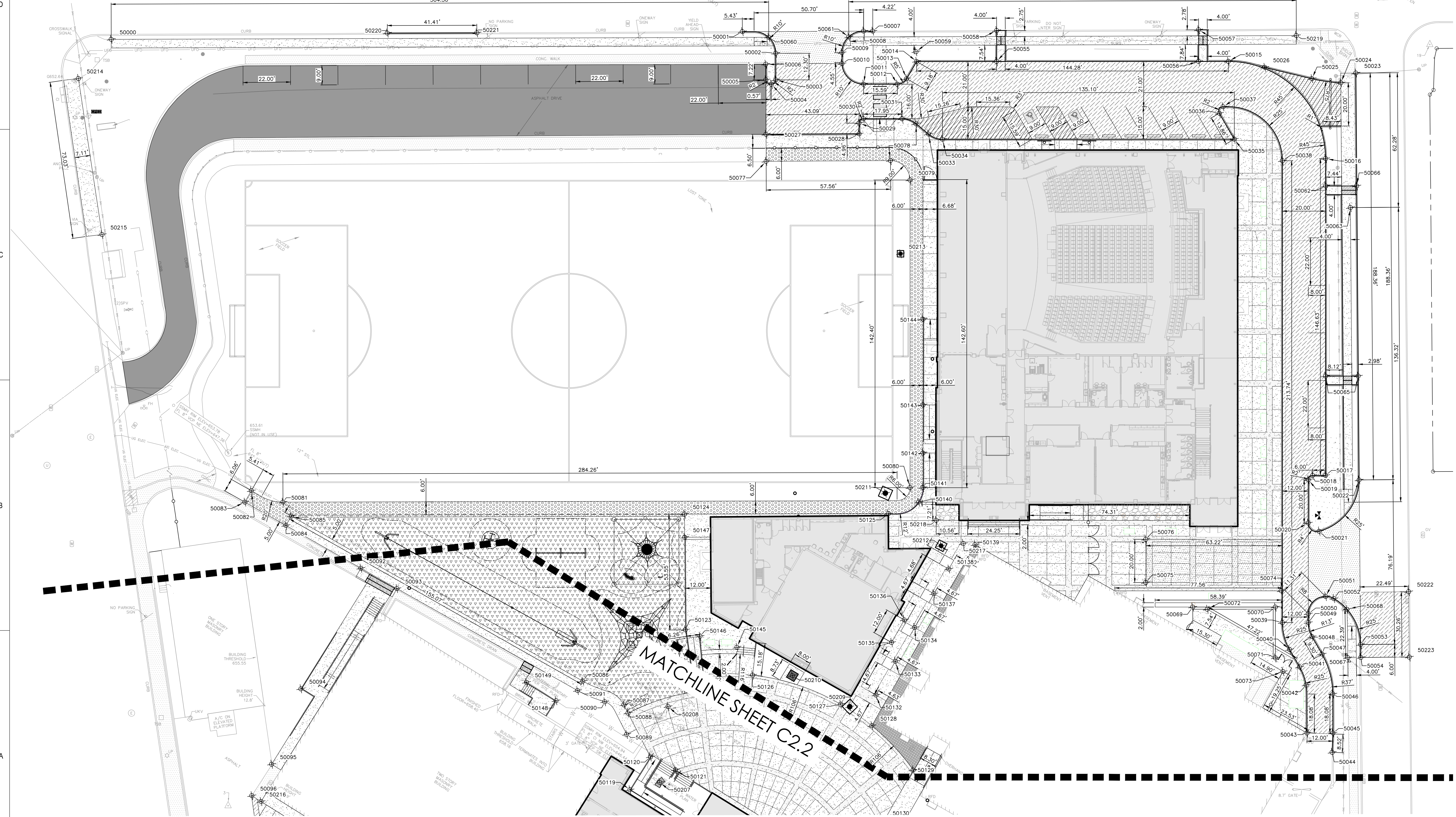
DATE	CONSTRUCTION	
06/24/24	DOCUMENTS	
PROJECT NO.	DRAWN BY	CHECKED BY
A202108.00	GS	RR

#	DESCRIPTION	DATE
1	ASI 0.2	12/18/2024
2	ASI 03	01/22/2025

OVERALL
DIMENSIONAL
CONTROL PLAN

C2.0R1

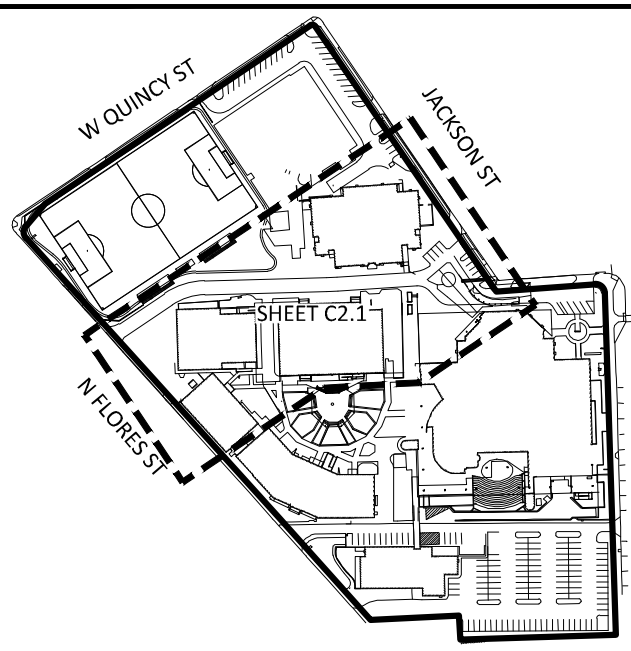
Point Table			Point Table			Point Table			Point Table			Point Table			Point Table			Point Table		
Point #	Northing	Easting	Point #	Northing	Easting	Point #	Northing	Easting	Point #	Northing	Easting	Point #	Northing	Easting	Point #	Northing	Easting	Point #	Northing	Easting
50000	1370773.0566	2128933.3739	50030	13707935.3648	2129243.5250	50060	13707942.4746	2129186.1557	50090	13707644.3918	2129293.3975	50120	13707634.8352	2129325.1348	50150	13707262.2027	2129682.8066	50180	13707263.0666	2129866.6787
50001	13707937.8621	2129174.5744	50031	13707945.3132	2129258.4704	50061	13707963.1034	2129216.9352	50091	13707641.7222	2129280.0188	50121	13707636.3024	2129338.1258	50151	13707257.3355	2129696.6188	50181	13707257.9275	2129861.7143
50002	13707938.1202	2129192.9893	50032	13707946.9296	2129265.0981	50062	13708027.9790	2129438.8575	50092	13707633.2841	2129165.1612	50122	13707671.3109	2129325.4070	50152	13707257.4749	2129701.6649	50182	13707235.9115	2129865.3284
50003	13707927.8760	2129199.7940	50033	13707946.1150	2129272.5513	50063	13708026.0258	2129453.9901	50093	13707634.6884	2129184.2751	50123	13707692.7780	2129306.0120	50153	13707250.2843	2129698.8639	50183	13707236.3289	2129880.3226
50004	13707925.1045	2129199.2363	50034	13707947.7249	2129279.2379	50064	13707954.7265	2129487.6182	50094	13707571.4568	2129172.2951	50124	13707737.1289	2129276.0047	50154	13707249.8669	2129683.8698	50184	13707209.3394	2129881.0740
50005	13707925.3427	2129195.9955	50035	13708022.5859	2129391.7005	50065	13707963.0921	2129500.2122	50095	13707534.9108	2129181.0342	50125	13707789.5851	2129354.4154	50155	13707151.9048	2129686.5971	50185	13707208.8663	2129884.0806
50006	13707931.3404	2129191.9770	50036	13708028.7362	2129379.2838	50066	13708035.9588	2129450.8707	50096	13707517.7026	2129181.4814	50126	13707692.6069	2129343.5235	50156	13707151.4874	2129671.6029	50186	13707184.3479	2129863.7628
50007	13707971.5201	2129224.6702	50037	13708032.1932	2129379.0632	50067	13707851.9269	2129568.3971	50097	13707519.6954	2129258.4264	50127	13707703.9775	2129384.9094	50157	13707143.5461	2129673.8248	50187	13707183.8493	2129861.7837
50008	13707969.1881	2129221.1529	50038	13708026.5872	2129415.5963	50068	13707870.3529	2129555.6785	50098	13707507.6209	2129269.4143	50128	13707703.6719	2129400.4585	50158	13707149.4069	2129704.6736	50188	13707129.0702	2129883.2865
50009	13707955.3205	2129234.7390	50039	13707848.6597	2129534.1961	50069	13707831.6463	2129495.6620	50099	13707500.7300	2129269.4670	50129	13707697.2159	2129429.7661	50159	13707150.1862	2129732.6628	50189	13707129.3724	2129865.4072
50010	13707951.0808	2129221.1833	50040	13707840.1098	2129543.9113	50070	13707852.8307	2129527.4874	50100	13707491.8491	2129283.7667	50130	13707670.4283	2129431.4728	50160	13707145.3273	2129737.8000	50190	13707124.2352	2129860.5483
50011	13707948.7370	2129234.7390	50041	13707835.9823	2129552.2449	50071	13707833.2416	2129540.5277	50101	13707493.0794	2129326.2472	50131	13707668.0560	2129453.9483	50161	13707151.1881	2129768.6488	50191	13707105.7424	2129861.0631
50012	13707957.3770	2129247.7187	50042	13707830.7113	2129559.3564	50072	13707834.5652	2129501.8518	50102	13707493.8525	2129376.4613	50132	13707716.5307	2129396.1977	50162	13707153.6860	2129750.5723	50192	13707099.7310	2129645.1468
50013	13707961.8575	2129249.9380	50043	13707812.4074	2129571.9786	50073	13707829.9610	2129547.0093	50103	13707501.4842	2129340.1102	50133	13707734.4979	2129394.9889	50163	13707189.6442	2129748.5708	50193	13707115.7375	2129644.7012
50014	13707971.0763	2129249.9499	50044	13707811.4513	2129586.6372	50074	13707860.6198	2129525.6341	50104	13707500.5813	2129308.9312	50134	13707752.4553	2129393.7499	50164	13707192.1699	2129731.4939	50194	13707117.6812	2129642.6499
50015	13708051.0265	2129369.9579	50045	13707819.0646	2129581.9627	50075	13707829.0746	2129471.2611	50105	13707499.7996	2129281.9401	50135	13707740.7794	2129388.6903	50165	13707207.6372	2129748.0699	50195	13707115.5192	2129638.6781
50016	13708036.5019	2129431.8529	50046	13707834.1059	2129571.9334	50076	13707845.7341	2129460.1950	50106	13707520.6257	2129387.6361	50136	13707752.7490	2129387.6361	50166	13707252.2302	2129732.8229	50196	13707188.5321	2129636.1738
50017	13707916.4379	2129513.1051	50047	13707846.7356	2129557.5709	50077	13707893.9845	2129216.9772	50107	13707508.1760	2129427.6975	50137	13707770.4126	2129392.5108	50167	13707252.6476	2129747.8171	50197	13707147.0249	2129798.7764
50018	13707913.1192	2129508.1088	50048	13707850.8631	2129549.2373	50078	13707926.1699	2129264.6954	50108	13707507.2700	2129399.7120	50138	13707783.7680	2129391.9201	50168	13707262.6762	2129734.6242	50198	13707153.0248	2129834.6233
50019	13707910.3450	2129507.5506	50049	13707855.3091	2129544.1853	50079	13707923.6955	2129277.2200	50109	13707443.8997	2129331.6482	50139	13707799.8737	2129395.8189	50169	13707258.0647	2129765.6733	50199	13707156.0225	2129816.5328
50020	13707893.6983	2129518.6315	50050	13707858.7071	2129541.9235	50080	13707805.1519	2129356.1280	50110	13707387.5883	2129268.8151	50140	13707801.7758	2129363.1110	50170	13707260.1059	2129790.6262	50200	13707155.4659	2129796.5406
50021	13707893.2826	2129524.9732	50051	13707869.7995	2129544.1501	50081	13707638.7796	2129118.2031	50111	13707380.5873	2129274.4872	50141	13707808.5344	2129361.0796	50171	13707194.3673	2129792.4564	50201	13707355.2263	2129297.6083
50022	13707923.2880	2129527.1552	50052	13707871.1259	2129547.8643	50082	13707635.0692	2129103.0998	50112	13707345.8506	2129283.9718	50142	13707821.8535	2129352.2139	50172	13707192.0086	2129815.5310	50202	13707387.3689	2129271.5670
50023	13708079.2693	2129421.5726	50053	13707860.2753	2129569.9813	50083	13707629.0246	2129103.5375	50113	13707669.8864	2129480.5836	50143	13707840.3693	2129339.8934	50173	13707195.5084	2129833.4405	50203	13707453.4811	2129345.3360
50024	13708071.6146	2129418.3012	50054	13707855.3215	2129573.3667	50084	13707630.5639	2129125.3270	50114	13707649.7526	2129479.4736	50144	13707873.3706	2129317.9262	50174	13707227.9123	2129829.5372	50204	13707475.9063	2129326.1548
50025	13708065.8451	2129406.1133	50055	13707991.5923	2129280.1708	50085	13707635.5523	2129124.9877	50115	13707648.5917	2129462.7734	50145	13707699.2765	2129330.3742	50175	13707227.4949	2129814.5430	50205	13707506.5387	2129336.6959
50026	13708058.0849	2129384.9919	50056	13708043.3992	2129357.9996	50086	13707646.7087	2129279.6525	50116	13707645.5718	2129419.3330	50146	13707694.0611	2129331.2959	50176	13707254.4844	2129813.7916	50206	13707639.8450	2129457.3115
50027	13707904.3735	2129210.0250	50057	13708055.5769	2129349.9105	50087	13707648.0736	2129301.5542	50117	13707638.7258	2129405.1144	50147	13707728.2600	2129282.0053	50177	13707254.9018	2129828.7858	50207	13707627.4303	2129335.2565
50028	13707928.4354	2129245.7718	50058	13708003.4925	2129272.2661	50088	13707645.9945	2129305.2575	50118	13707638.5255	2129396.4765	50148	13707632.2990	2129274.3490	50178	13707263.0848	2129826.7122	50208	13707658.7713	2129319.0223
50029	13707932.5816	2129242.9752	50059	13707974.6624	2129246.6161	50089	13707637.4914	2129310.1899	50119	13707616.9332	2129325.6533	50149	13707631.8090	2129258.2667	50179	13707263.1889	2129884.8420	50209	13707705.3119	2129389.0799



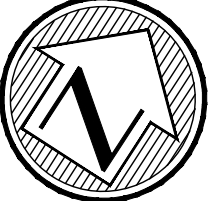
4/17/2024 4:55:05 PM
ORIGINAL SHEET ARCH1

NOTES:

- ALL DIMENSIONS ARE TO FACE OF CURB UNLESS OTHERWISE NOTED ON PLAN.
- ALL RADI SHALL BE 5.00' UNLESS NOTED OTHERWISE NOTED ON PLAN.
- MOY TARIN RAMIREZ ENGINEERS, L.L.C. CAN PERFORM FIELD STAKING SERVICES FOR ANY IMPROVEMENTS AS SHOWN ON THE CONSTRUCTION PLANS. ANY STAKING REQUESTED, WILL BE AT THE CONTRACTOR'S EXPENSE.
- CONTRACTOR IS RESPONSIBLE FOR COORDINATING ALL LOCATIONS SHOWN WITH SIGNED AND SCALED CONSTRUCTION DOCUMENTS PRIOR TO CONSTRUCTION. ANY DISCREPANCIES SHALL BE REPORTED BEFORE PROCEEDING WITH CONSTRUCTION.



KEY MAP
NOT TO SCALE



SCALE: 1"=20'
0 20 40



723 South Flores
San Antonio, Texas 78204
Tel: (210) 349-1163
www.alta-architects.com

Permit/Seal



06.24.24

Consultant



Moy Tarin Ramirez Engineers, LLC
FIRM TBPE NO. F-5297 & TBPLS NO. 10131500
1270 CHANDLER PARK, SUITE 100
SAN ANTONIO, TEXAS 78249
TEL: (210) 698-5001
FAX: (210) 698-5085

• Engineers
• Surveyors
• Planners



BOND2020
SCHOOL RENOVATIONS • TECHNOLOGY

Client/Project

SAN ANTONIO INDEPENDENT SCHOOL DISTRICT

BOND 2020 FOX TECH CAMPUS
ADDITIONS & RENOVATIONS

637 N. MAIN AVE.
SAN ANTONIO, TEXAS 78205

DATE		CONSTRUCTION DOCUMENTS	
06/24/24			
PROJECT NO.		DRAWN BY	
A202108.00		GS	
ISSUE / REVISIONS		CHECKED BY	
#	DESCRIPTION	DATE	
	PERMIT SET	8/23/24	

PERMIT SET

DIMENSIONAL CONTROL PLAN

C2.1

4/17/2024 4:33:02 PM

ORIGINAL SHEET (ARCHIT)

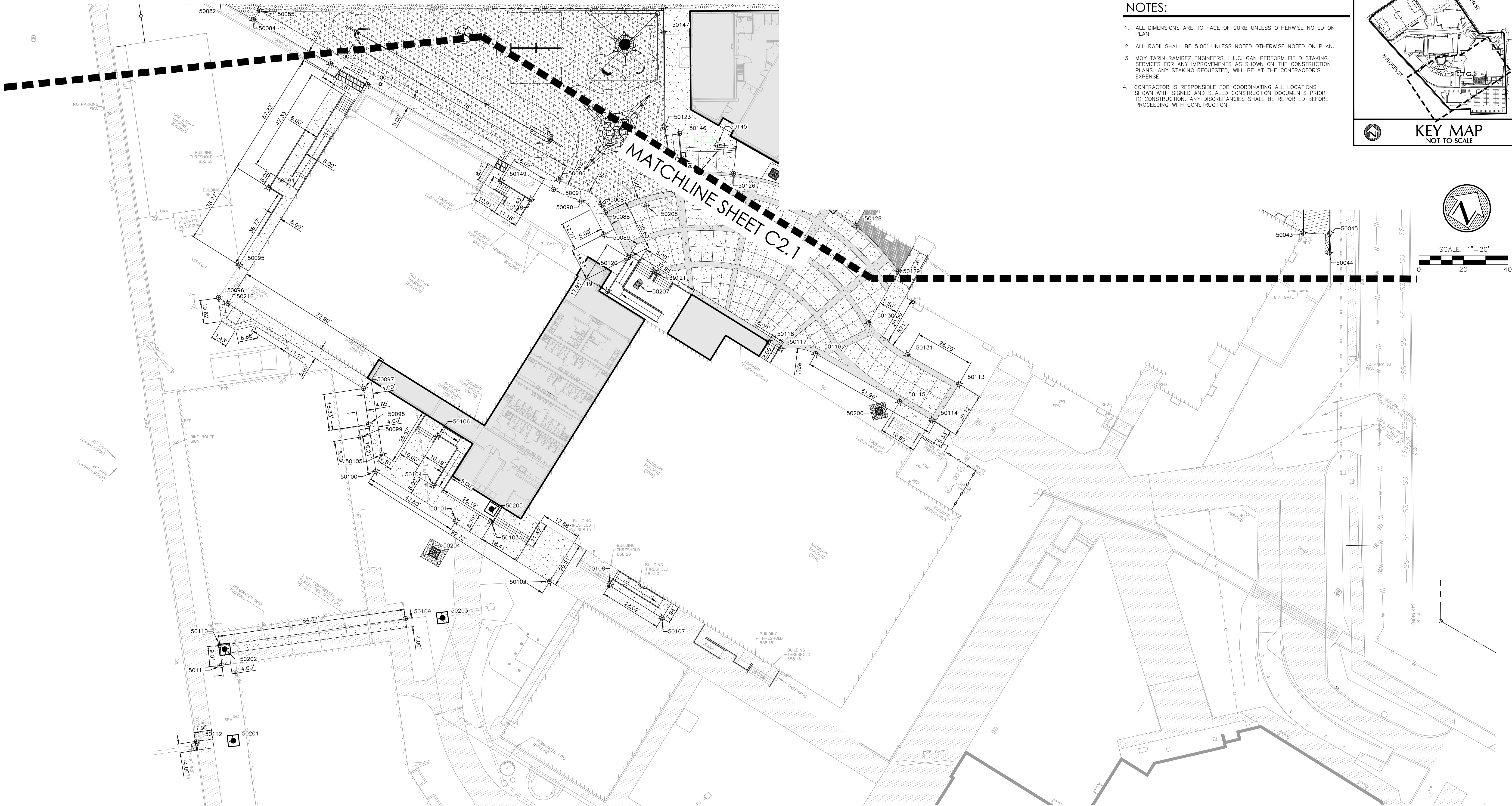
F

D

C

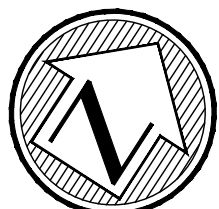
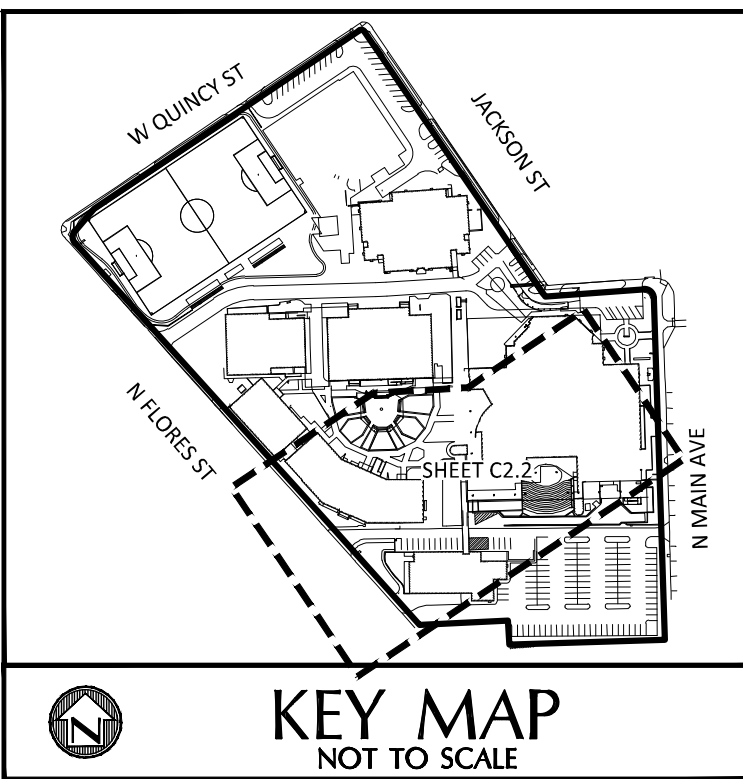
B

A



NOTES:

1. ALL DIMENSIONS ARE TO FACE OF CURB UNLESS OTHERWISE NOTED ON PLAN.
2. ALL RADII SHALL BE 5.00' UNLESS NOTED OTHERWISE NOTED ON PLAN.
3. MOY TARIN RAMIREZ ENGINEERS, L.L.C. CAN PERFORM FIELD STAKING SERVICES FOR ANY IMPROVEMENTS AS SHOWN ON THE CONSTRUCTION PLANS. ANY STAKING REQUESTED, WILL BE AT THE CONTRACTOR'S EXPENSE.
4. CONTRACTOR IS RESPONSIBLE FOR COORDINATING ALL LOCATIONS SHOWN WITH SIGNED AND SEALED CONSTRUCTION DOCUMENTS PRIOR TO CONSTRUCTION. ANY DISCREPANCIES SHALL BE REPORTED BEFORE PROCEEDING WITH CONSTRUCTION.



SCALE: 1" = 20'

Point Table			Point Table			Point Table			Point Table			Point Table			Point Table			Point Table		
Point #	Northing	Easting	Point #	Northing	Easting	Point #	Northing	Easting	Point #	Northing	Easting	Point #	Northing	Easting	Point #	Northing	Easting	Point #	Northing	Easting
50000	13707773.0566	2128933.3739	50030	13707935.3648	2129243.5250	50060	13707942.4746	2129186.1557	50090	13707644.3918	2129293.3975	50120	13707634.8352	2129325.1348	50150	13707262.2027	2129682.8066	50180	13707263.0666	2129666.6787
50001	13707937.8621	2129174.5744	50031	13707945.3132	2129258.4704	50061	13707963.1034	2129216.9352	50091	13707641.7222	2129280.0188	50121	13707636.3024	2129338.1258	50151	13707262.3355	2129666.6188	50181	13707257.9275	2129661.7143
50002	13707938.1202	2129192.9893	50032	13707946.9296	2129265.0981	50062	13708027.9790	2129438.8575	50092	13707633.2841	2129165.1612	50122	13707671.3109	2129325.4070	50152	13707257.4749	2129701.6649	50182	13707235.9115	2129665.3284
50003	13707927.8760	2129199.7940	50033	13707946.1150	2129272.5513	50063	13708026.0258	2129445.9901	50093	13707634.6884	2129184.2751	50123	13707692.7780	2129306.0120	50153	13707250.2843	2129688.8639	50183	13707236.3289	2129680.3226
50004	13707925.1045	2129199.2363	50034	13707947.7249	2129279.2379	50064	13707954.7265	2129487.6182	50094	13707571.4568	2129172.9651	50124	13707737.1289	2129276.0047	50154	13707249.8669	2129683.8698	50184	13707209.3394	2129681.0740
50005	13707925.3427	2129195.9955	50035	13708022.5859	2129391.7005	50065	13707963.0921	2129500.2122	50095	13707534.9108	2129181.0342	50125	13707789.5851	2129354.4154	50155	13707151.9048	2129686.5971	50185	13707208.8663	2129684.0806
50006	13707931.3404	2129191.9770	50036	13708028.7362	2129379.2838	50066	13708035.9588	2129450.8707	50096	13707517.7026	2129181.4814	50126	13707692.6069	2129343.5235	50156	13707151.4874	2129671.6029	50186	13707184.3479	2129683.7628
50007	13707971.5201	2129224.6702	50037	13708032.1932	2129379.0632	50067	13707851.9269	2129568.3971	50097	13707519.6954	2129258.4264	50127	13707703.9775	2129384.9094	50157	13707143.5461	2129673.8248	50187	13707183.8493	2129681.7837
50008	13707969.1881	2129221.1529	50038	13708026.5872	2129415.7583	50068	13707870.3529	2129555.6785	50098	13707507.6209	2129269.4143	50128	13707703.6719	2129402.4585	50158	13707149.4069	2129704.8736	50188	13707129.8702	2129683.2865
50009	13707955.3205	2129218.3491	50039	13707848.6597	2129534.1961	50069	13707831.6463	2129495.6620	50099	13707500.7300	2129269.4670	50129	13707697.2159	2129429.7661	50159	13707150.1862	2129732.6628	50189	13707129.3724	2129685.4072
50010	13707951.0808	2129221.1833	50040	13707840.1098	2129543.9113	50070	13707852.8307	2129527.4874	50100	13707491.8491	2129283.7667	50130	13707670.4283	2129431.4728	50160	13707145.3273	2129737.8000	50190	13707124.2352	2129680.5483
50011	13707948.7370	2129234.7390	50041	13707835.9823	2129552.2449	50071	13707833.2416	2129540.5277	50101	13707493.0794	2129326.2472	50131	13707668.0560	2129453.9483	50161	13707151.1881	2129768.6488	50191	13707105.7424	2129681.0631
50012	13707957.3770	2129247.7187	50042	13707830.7113	2129559.3564	50072	13707834.5652	2129501.8518	50102	13707493.8525	2129376.4613	50132	13707716.5307	2129396.1977	50162	13707153.6860	2129750.5723	50192	13707099.7310	2129645.1468
50013	13707961.8575	2129249.9380	50043	13707812.4074	2129571.9786	50073	13707829.9610	2129547.0093	50103	13707501.4842	2129340.1102	50133	13707734.4979	2129394.9889	50163	13707189.6442	2129748.5708	50193	13707115.7375	2129644.7012
50014	13707971.0763	2129249.3499	50044	13707811.4513	2129586.6372	50074	13707860.6198	2129525.6341	50104	13707500.5813	2129308.9312	50134	13707752.4553	2129393.7499	50164	13707192.1699	2129731.4939	50194	13707117.6812	2129642.6499
50015	13708051.0265	2129369.4579	50045	13707819.0846	2129581.9627	50075	13707829.0746	2129471.2611	50105	13707499.7996	2129281.9401	50135	13707746.7794	2129388.6903	50165	13707207.6372	2129748.0699	50195	13707115.5192	2129638.6781
50016	13708038.5019	2129431.8529	50046	13707834.1059	2129571.9334	50076	13707845.7341	2129460.1950	50106	13707520.6257	2129298.1554	50136	13707752.7490	2129387.8361	50166	13707252.2302	2129732.8229	50196	13707188.5321	2129636.1738
50017	13707916.4379	2129513.1051	50047	13707846.7356	2129557.5709	50077	13707893.9845	2129216.9772	50107	13707508.1760	2129216.9772	50137	13707770.4126	2129392.5108	50167	13707252.6476	2129747.8171	50197	13707147.0249	2129798.7764
50018	13707913.1192	2129508.1088	50048	13707850.8631	2129549.2373	50078	13707926.1699	2129264.9954	50108	13707507.2700	2129399.7120	50138	13707783.7680	2129391.9201	50168	13707262.6762	2129734.6242	50198	13707153.0248	2129634.6233
50019	13707910.3450	2129507.5506	50049	13707855.3091	2129544.1853	50079	13707923.6955	2129277.2200	50109	13707443.8997	2129331.6482	50139	13707799.8737	2129395.8189	50169	13707258.0647	2129765.6733	50199	13707156.0225	2129816.5328
50020	13707893.6983	2129518.6315	50050	13707858.7071	2129541.9235	50080	13707805.1519	2129356.1280	50110	13707387.5883	2129268.8151	50140	13707801.7758	2129363.1110	50170	13707260.1059	2129790.6262	50200	13707155.4659	2129796.5406
50021	13707893.2826	2129524.9732	50051	13707869.7995	2129544.1501	50081	13707830.5873	2129118.2031	50111	13707380.5873	2129274.4872	50141	13707808.5344	2129361.0796	50171	13707194.3673	2129792.4564	50201	13707355.2263	2129297.6083
50022	13707923.2880	2129527.1552	50052	13707871.1259	2129547.8643	50082	13707635.0692	2129103.0998	50112	13707345.8506	2129283.9718	50142	13707821.8535	2129352.2139	50172	13707192.0086	2129815.5310	50202	13707387.3689	2129271.5670
50023	13708079.2693	2129421.5726	50053	13707860.2793	2129569.8913	50083	13707629.0246	2129103.5375	50113	13707669.8864	2129480.5836	50143	13707893.3934	2129339.8934	50173	13707195.5084	2129833.4405	50203	13707453.4811	2129345.3360
50024	13708071.6146	2129418.3012	50054	13707855.3215	2129573.3667	50084	13707630.5639	2129125.3270	50114	13707649.7526	2129479.4736	50144	13707873.3706	2129317.9262	50174	13707227.9123	2129829.5372	50204	13707475.9063	2129326.1548
50025	13708065.8451	2129406.1133	50055	13707991.5923	2129280.1708	50085	13707635.5523	2129124.9877	50115	13707648.5917	2129462.7734	50145	13707699.2765	2129330.3742	50175	13707227.4949	2129814.5430	50205	13707506.5387	2129336.6959
50026	13708058.0849	2129384.9919	50056	13708043.3992	2129357.9996	50086	13707646.7087	2129279.6525	50116	13707645.5718	2129419.3330	50146	13707694.0611	2129313.2959	50176	13707254.4844	2129813.7916	50206	13707639.8450	2129457.3115
50027	13707904.3735	2129210.0259	50057	13708055.5769	2129349.9105	50087	13707648.0736	2129301.5542	50117	13707638.7258	2129405.1144	50147	13707728.2600	2129282.0053	50177	13707254.9018	2129828.7858	50207	13707627.4303	2129335.2565
50028	13707928.4554	2129245.7718	50058	13708003.4925	2129272.2661	50088	13707645.9945	2129305.2575	50118	13707638.5255	2129398.4765	50148	13707632.2990	2129274.3490	50178	13707263.0848	2129826.7122	50208	13707658.7713	2129319.0223
50029	13707932.5816	2129242.9752	50059	13707974.6624	2129246.6161	50089	13707637.4914	2129310.1899	50119	13707616.9332	2129325.6533	50149	13707631.8090	2129258.2667	50179	13707263.1889	2129884.8420	50209	13707705.3119	2129389.0799

DATE		CONSTRUCTION	
06/24/24		DOCUMENTS	
PROJECT NO.		DRAWN BY	
A202108.00		GS	
ISSUE / REVISIONS		CHECKED BY	
		RR	
#	DESCRIPTION	DATE	
	PERMIT SET	8/23/24	

PERMIT SET

DIMENSIONAL
CONTROL PLAN

C2.2

Permit/Seal



Consultant



Moy Tarin Ramirez Engineers, LLC
FIRM TBPE NO. F-5297 & TBPLS NO. 10131500
12700 CAMDEN PARK, SUITE 100
SAN ANTONIO, TEXAS 78249
TEL: (210) 698-5081
FAX: (210) 698-5085



Client/Project
SAN ANTONIO INDEPENDENT SCHOOL DISTRICT

BOND 2020 FOX TECH CAMPUS
ADDITIONS & RENOVATIONS

637 N. MAIN AVE.
SAN ANTONIO, TEXAS 78205

E

D

C

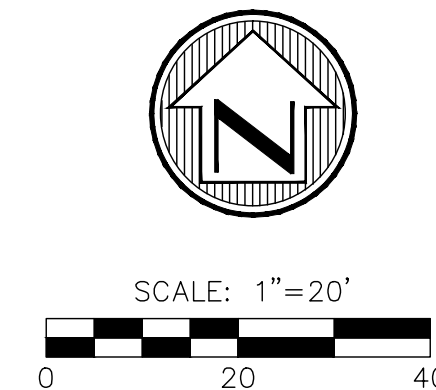
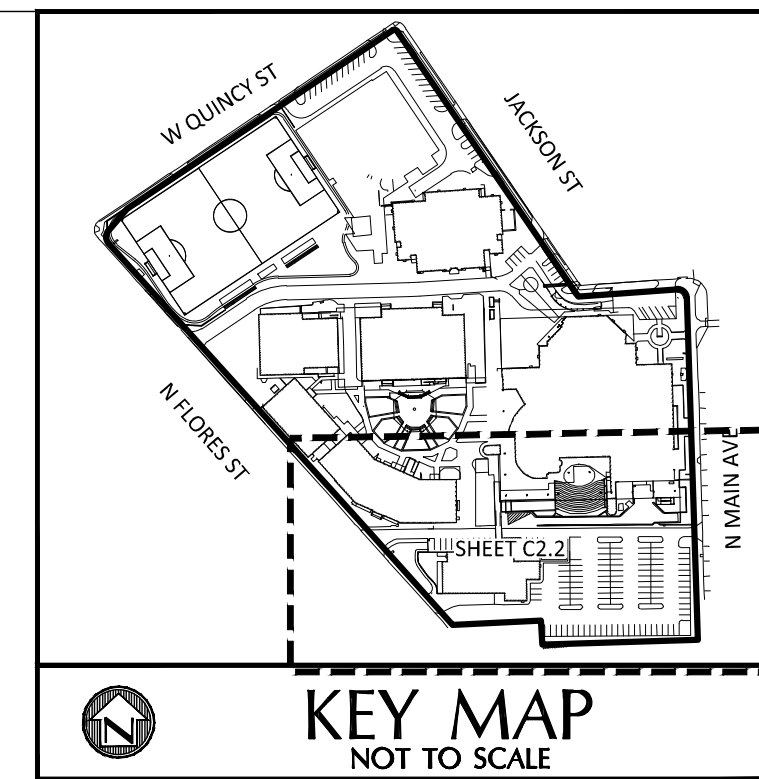
B

A

4/17/2024 4:55:05 PM
ORIGINAL SHEET ARCH1

Point Table			Point Table			Point Table			Point Table			Point Table			Point Table			Point Table		
Point #	Northing	Easting	Point #	Northing	Easting	Point #	Northing	Easting	Point #	Northing	Easting	Point #	Northing	Easting	Point #	Northing	Easting	Point #	Northing	Easting
50000	13707773.0566	2128933.3739	50030	13707935.3648	2129243.5250	50060	13707942.4746	2129186.1557	50090	13707644.3918	2129293.3975	50120	13707634.8352	2129325.1348	50150	13707262.2027	2129662.8066	50180	13707263.0666	2129666.6787
50001	13707937.8621	2129174.5744	50031	13707945.3132	2129258.4704	50061	13707963.1034	2129216.9352	50091	13707641.7222	2129280.0188	50121	13707636.3024	2129338.1258	50151	13707262.3355	2129666.6188	50181	13707257.9275	2129661.7143
50002	13707938.1202	2129192.9893	50032	13707946.9296	2129265.0981	50062	13708027.9790	2129438.8575	50092	13707633.2841	2129165.1612	50122	13707671.3109	2129325.4070	50152	13707257.4749	2129701.6649	50182	13707235.9115	2129665.3284
50003	13707927.8760	2129199.2363	50033	13707946.1150	2129272.5513	50063	13708026.0258	2129453.9901	50093	13707634.6884	2129184.2751	50123	13707692.7780	2129306.0120	50153	13707250.2843	2129698.8639	50183	13707236.3289	2129680.3226
50004	13707925.1045	2129199.2363	50034	13707947.7249	2129279.2379	50064	13707954.7265	2129487.6182	50094	13707571.4568	2129172.9551	50124	13707737.1289	2129276.0047	50154	13707249.8669	2129683.8689	50184	13707209.3394	2129681.0740
50005	13707925.3427	2129195.9955	50035	13708022.5859	2129391.7005	50065	13707963.0921	2129500.2122	50095	13707534.9108	2129181.0342	50125	13707789.5851	2129354.4154	50155	13707151.9048	2129686.5971	50185	13707208.8663	2129684.0806
50006	13707931.3404	2129191.9770	50036	13708028.7362	2129379.2838	50066	13708035.9588	2129450.8707	50096	13707517.7026	2129181.4814	50126	13707692.0069	2129343.5235	50156	13707151.4874	2129671.6029	50186	13707184.3479	2129663.7628
50007	13707971.5201	2129224.6702	50037	13708032.1932	2129379.0632	50067	13707851.9269	2129568.3971	50097	13707519.6954	2129258.4264	50127	13707703.9775	2129384.9094	50157	13707143.5461	2129673.8248	50187	13707183.8493	2129681.7837
50008	13707969.1881	2129221.1529	50038	13708026.5872	2129415.7583	50068	13707870.3529	2129555.6785	50098	13707507.6209	2129269.4143	50128	13707703.6719	2129402.4585	50158	13707149.4069	2129704.6736	50188	13707129.8702	2129683.2865
50009	13707955.3205	2129218.3491	50039	13707848.6597	2129534.1961	50069	13707831.6463	2129495.6620	50099	13707500.7300	2129269.4670	50129	13707697.2159	2129429.7661	50159	13707150.1862	2129732.6628	50189	13707129.3724	2129685.4072
50010	13707951.0808	2129221.1833	50040	13707840.1098	2129543.9113	50070	13707852.8307	2129527.4874	50100	13707491.8491	2129283.7667	50130	13707670.4283	2129431.4728	50160	13707124.2352	2129737.8000	50190	13707124.2352	2129680.5483
50011	13707948.7370	2129234.7390	50041	13707835.9823	2129552.2449	50071	13707833.2416	2129540.5277	50101	13707493.0794	2129326.2472	50131	13707668.0560	2129453.9483	50161	13707151.1881	2129768.6488	50191	13707105.7424	2129681.0631
50012	13707957.3770	2129247.7187	50042	13707830.7113	2129559.3564	50072	13707834.5652	2129501.8518	50102	13707793.8525	2129396.1977	50132	13707716.5307	2129396.1977	50162	13707153.6860	2129750.5723	50192	13707099.7310	2129645.1468
50013	13707961.8575	2129249.9380	50043	13707812.4074	2129571.9786	50073	13707829.9610	2129547.0093	50103	13707501.4842	2129340.1102	50133	13707734.4979	2129394.9889	50163	13707189.6442	2129748.5708	50193	13707115.7375	2129644.7012
50014	13707971.0763	2129249.3499	50044	13707811.4513	2129586.6372	50074	13707860.6198	2129525.6341	50104	13707500.5813	2129308.9312	50134	13707752.4553	2129393.7499	50164	13707192.1699	2129731.4939	50194	13707117.6812	2129642.6499
50015	13708051.0265	2129369.4579	50045	13707819.0646	2129581.9627	50075	13707829.0746	2129471.2611	50105	13707499.7996	2129281.9401	50135	13707740.7794	2129388.6903	50165	13707207.6372	2129748.0699	50195	13707115.5192	2129638.6781
50016	13708038.5019	2129431.8529	50046	13707834.1059	2129571.9334	50076	13707845.7341	2129460.1950	50106	13707520.6257	2129298.1554	50136	13707752.7490	2129387.8361	50166	13707252.2302	2129732.8229	50196	13707188.5321	2129636.1738
50017	13707916.4379	2129513.1051	50047	13707846.7356	2129557.5709	50077	13707893.9845	2129216.9772	50107	13707508.1760	2129427.6975	50137	13707770.4126	2129392.5108	50167	13707252.6476	2129747.8171	50197	13707147.0249	2129798.7764
50018	13707913.1192	2129508.1088	50048	13707850.8631	2129549.2373	50078	13707926.1699	2129264.6954	50108	13707507.2700	2129399.7120	50138	13707783.7680	2129391.9201	50168	13707262.6762	2129734.6242	50198	13707153.0248	2129834.6233
50019	13707910.3450	2129507.5506	50049	13707855.3091	2129544.1853	50079	13707923.6955	2129277.2200	50109	13707443.8997	2129331.6482	50139	13707799.8737	2129395.8189	50169	13707258.0647	2129765.6733	50199	13707156.0225	2129816.5328
50020	13707893.6983	2129518.6315	50050	13707858.7071	2129541.9235	50080	13707805.1519	2129356.1280	50110	13707387.5883	2129268.8151	50140	13707801.7758	2129363.1110	50170	13707260.1059	2129790.6262	50200	13707155.4659	2129796.5406
50021	13707893.2826	2129524.9732	50051	13707869.7995	2129544.1501	50081	13707638.7796	2129131.2031	50111	13707380.9741	2129274.4872	50141	13707806.5344	2129361.0796	50171	13707194.3673	2129792.4564	50201	13707355.2263	2129297.6083
50022	13707923.2880	2129527.1552	50052	13707871.1259	2129547.8643	50082	13707635.0692	2129103.0998	50112	13707345.8506	2129283.9718	50142	13707821.8535	2129352.2139	50172	13707192.0086	2129815.5310	50202	13707387.3689	2129271.5670
50023	13708079.2693	2129421.5726	50053	13707860.2753	2129569.9813	50083	13707629.0246	2129103.5375	50113	13707669.8864	2129480.5836	50143	13707840.3693	2129339.8934	50173	13707195.5084	2129833.4405	50203	13707453.4811	2129345.3360
50024	13708071.6146	2129418.3012	50054	13707855.3215	2129573.3667	50084	13707630.5639	2129125.3270	50114	13707649.7526	2129479.4736	50144	13707873.3706	2129317.9262	50174	13707227.9123	2129829.5372	50204	13707475.9063	2129326.1548
50025	13708065.8451	2129406.1133	50055	13707991.5923	2129280.1708	50085	13707635.5523	2129124.9877	50115	13707648.5917	2129462.7734	50145	13707699.2765	2129330.3742	50175	13707227.4949	2129814.5430	50205	13707506.5387	2129336.6959
50026	13708058.0849	2129384.9919	50056	13708043.3992	2129357.9996	50086	13707646.7087	2129279.6525	50116	13707645.5718	2129419.3330	50146	13707694.0611	2129313.2959	50176	13707254.4844	2129813.7916	50206	13707639.8450	2129457.3115
50027	13707904.3735	2129210.0259	50057	13708055.5769	2129349.9105	50087	13707648.0736	2129301.5542	50117	13707638.7258	2129405.1144	50147	13707728.2600	2129282.0053	50177	13707254.9018	2129828.7858	50207	13707627.4303	2129335.2565
50028	13707928.4354	2129245.7718	50058	13708003.4925	2129272.2661	50088	13707645.9945	2129305.2575	50118	13707638.5258	2129398.4765	50148	13707632.2990	2129274.3490	50178	13707263.0848	2129826.7122	50208	13707658.7713	2129319.0223
50029	13707932.5816	2129242.9752	50059	13707974.6624	2129246.6161	50089	13707637.4914	2129310.1899	50119	13707616.9332	2129325.6533	50149	13707631.8090	2129258.2667	50179	13707263.1889	2129884.8420	50209	13707705.3119	2129389.0799

- NOTES:
- ALL DIMENSIONS ARE TO FACE OF CURB UNLESS OTHERWISE NOTED ON PLAN.
 - ALL RADII SHALL BE 5.00' UNLESS NOTED OTHERWISE NOTED ON PLAN.
 - MOY TARIN RAMIREZ ENGINEERS, L.L.C. CAN PERFORM FIELD STAKING SERVICES FOR ANY IMPROVEMENTS AS SHOWN ON THE CONSTRUCTION PLANS. ANY STAKING REQUESTED, WILL BE AT THE CONTRACTOR'S EXPENSE.
 - CONTRACTOR IS RESPONSIBLE FOR COORDINATING ALL LOCATIONS SHOWN WITH SIGNED AND SEALED CONSTRUCTION DOCUMENTS PRIOR TO CONSTRUCTION. ANY DISCREPANCIES SHALL BE REPORTED BEFORE PROCEEDING WITH CONSTRUCTION.



723 South Flores
San Antonio, Texas 78204
Tel: (210) 349-1163
www.alta-architects.com

Permit/Seal

06.24.24

Consultant

MIR
Moy Tarin Ramirez Engineers, LLC
FIRM: TBPE NO. F-5297 & TBPLS NO. 10131500
12700 CAMDEN PARK, SUITE 100
SAN ANTONIO, TEXAS 78249
TEL: (210) 698-5001
FAX: (210) 698-5085

- Engineers
- Surveyors
- Planners

SCHOOL RENOVATIONS • TECHNOLOGY

Client/Project

SAN ANTONIO INDEPENDENT SCHOOL DISTRICT

BOND 2020 FOX TECH CAMPUS

ADDITIONS & RENOVATIONS

637 N. MAIN AVE.
SAN ANTONIO, TEXAS 78205

DATE	06/24/24	CONSTRUCTION DOCUMENTS
PROJECT NO.	A202108.00	GS
DRAWN BY	RR	CHECKED BY

ISSUE / REVISIONS

#	DESCRIPTION	DATE
1	PERMIT SET	8/23/24

PERMIT SET

DIMENSIONAL CONTROL PLAN

C2.3